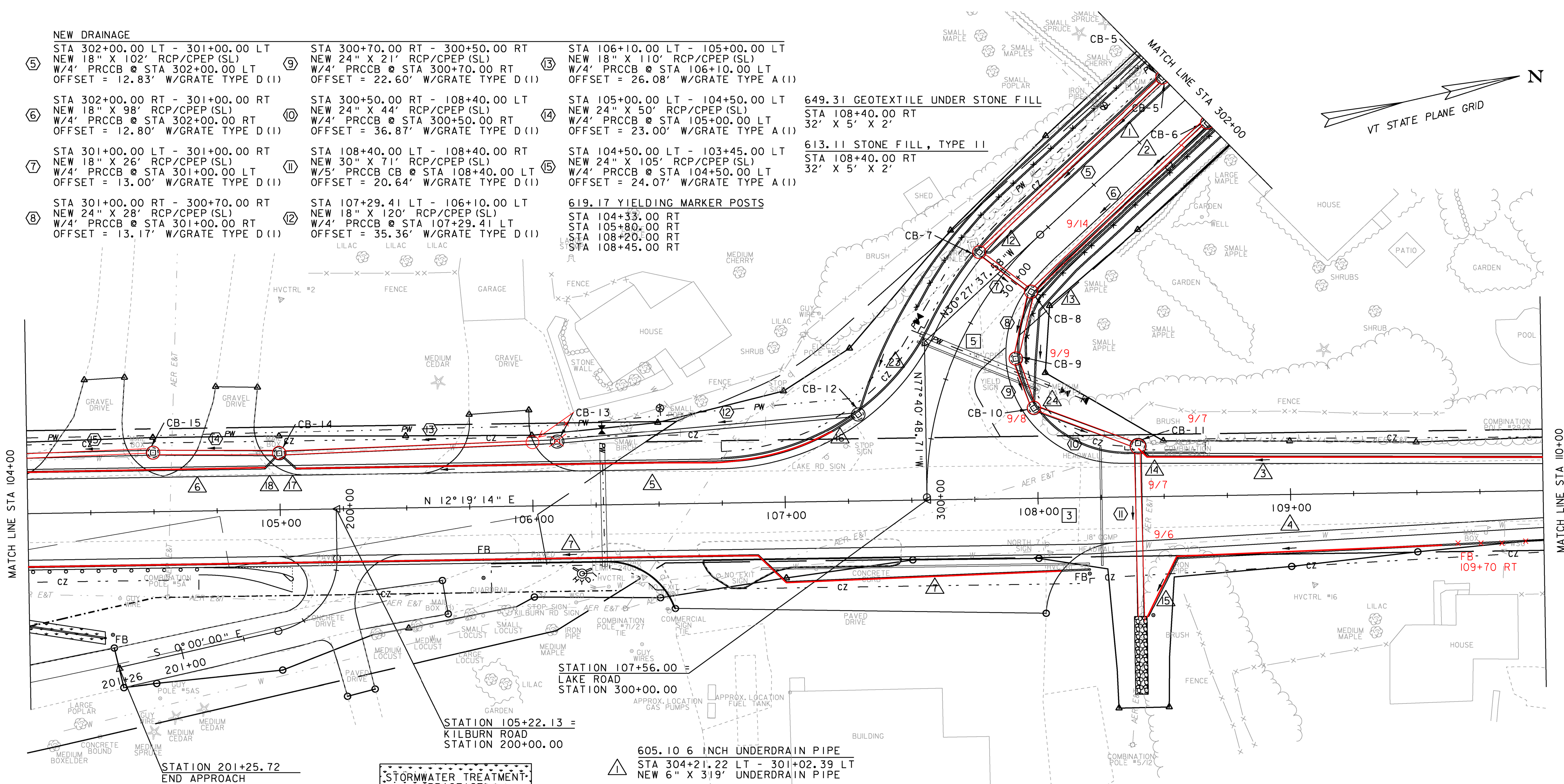


- NEW DRAINAGE**
- ⑤ STA 302+00.00 LT - 301+00.00 LT  
NEW 18" X 102' RCP/CPEP (SL)  
W/4' PRCCB @ STA 302+00.00 LT  
OFFSET = 12.83' W/GRATE TYPE D (1)
  - ⑥ STA 302+00.00 RT - 301+00.00 RT  
NEW 18" X 98' RCP/CPEP (SL)  
W/4' PRCCB @ STA 302+00.00 RT  
OFFSET = 12.80' W/GRATE TYPE D (1)
  - ⑦ STA 301+00.00 LT - 301+00.00 RT  
NEW 18" X 26' RCP/CPEP (SL)  
W/4' PRCCB @ STA 301+00.00 LT  
OFFSET = 13.00' W/GRATE TYPE D (1)
  - ⑧ STA 301+00.00 RT - 300+70.00 RT  
NEW 24" X 28' RCP/CPEP (SL)  
W/4' PRCCB @ STA 301+00.00 RT  
OFFSET = 13.17' W/GRATE TYPE D (1)
  - ⑨ STA 300+70.00 RT - 300+50.00 RT  
NEW 24" X 21' RCP/CPEP (SL)  
W/4' PRCCB @ STA 300+70.00 RT  
OFFSET = 22.60' W/GRATE TYPE D (1)
  - ⑩ STA 300+50.00 RT - 108+40.00 LT  
NEW 24" X 44' RCP/CPEP (SL)  
W/4' PRCCB @ STA 300+50.00 RT  
OFFSET = 36.87' W/GRATE TYPE D (1)
  - ⑪ STA 108+40.00 LT - 108+40.00 RT  
NEW 30" X 71' RCP/CPEP (SL)  
W/5' PRCCB @ STA 108+40.00 LT  
OFFSET = 20.64' W/GRATE TYPE D (1)
  - ⑫ STA 107+29.41 LT - 106+10.00 LT  
NEW 18" X 120' RCP/CPEP (SL)  
W/4' PRCCB @ STA 107+29.41 LT  
OFFSET = 35.36' W/GRATE TYPE D (1)
  - ⑬ STA 106+10.00 LT - 105+00.00 LT  
NEW 18" X 110' RCP/CPEP (SL)  
W/4' PRCCB @ STA 106+10.00 LT  
OFFSET = 26.08' W/GRATE TYPE A (1)
  - ⑭ STA 105+00.00 LT - 104+50.00 LT  
NEW 24" X 50' RCP/CPEP (SL)  
W/4' PRCCB @ STA 105+00.00 LT  
OFFSET = 23.00' W/GRATE TYPE A (1)
  - ⑮ STA 104+50.00 LT - 103+45.00 LT  
NEW 24" X 105' RCP/CPEP (SL)  
W/4' PRCCB @ STA 104+50.00 LT  
OFFSET = 24.07' W/GRATE TYPE A (1)

- 649.31 GEOTEXTILE UNDER STONE FILL  
STA 108+40.00 RT  
32' X 5' X 2'
- 613.11 STONE FILL, TYPE II  
STA 108+40.00 RT  
32' X 5' X 2'

- 619.17 YIELDING MARKER POSTS**
- STA 104+33.00 RT
  - STA 105+80.00 RT
  - STA 108+20.00 RT
  - STA 108+45.00 RT



- 605.20 6 INCH UNDERDRAIN CARRIER PIPE
- ⑫ STA 301+02.39 LT - 301+01.00 LT  
NEW 6" X 2' UNDERDRAIN CARRIER PIPE
- ⑬ STA 301+02.23 RT - 301+00.00 RT  
NEW 6" X 3' UNDERDRAIN CARRIER PIPE
- ⑭ STA 108+44.16 LT - 108+40.00 LT  
NEW 6" X 4' UNDERDRAIN CARRIER PIPE
- ⑮ STA 108+55.00 RT - 108+42.92 RT  
NEW 6" X 27' UNDERDRAIN CARRIER PIPE
- ⑯ STA 107+29.41 LT - 107+19.34 LT  
NEW 6" X 10' UNDERDRAIN CARRIER PIPE  
W/URBAN FLUSHING BASIN @  
STA 107+29.41 LT
- ⑰ STA 105+06.55 LT - 105+00.00 LT  
NEW 6" X 7' UNDERDRAIN CARRIER PIPE
- ⑱ STA 105+00.00 LT - 104+94.17 LT  
NEW 6" X 7' UNDERDRAIN CARRIER PIPE  
W/URBAN FLUSHING BASIN @  
STA 105+00.00 LT
- ⑲ STA 300+70.00 LT - 107+29.41 LT  
NEW 6" X 47' UNDERDRAIN CARRIER PIPE
- ⑳ STA 300+70.00 RT - 300+50.00 RT  
NEW 6" X 16' UNDERDRAIN CARRIER PIPE

- ① 605.10 6 INCH UNDERDRAIN PIPE  
STA 304+21.22 LT - 301+02.39 LT  
NEW 6" X 319' UNDERDRAIN PIPE
- ② STA 304+22.00 RT - 301+02.23 RT  
NEW 6" X 318' UNDERDRAIN PIPE
- ③ STA 110+12.50 LT - 108+44.16 LT  
NEW 6" X 168' UNDERDRAIN PIPE
- ④ STA 110+12.50 RT - 108+55.00 RT  
NEW 6" X 158' UNDERDRAIN PIPE
- ⑤ STA 107+19.34 LT - 105+06.55 LT  
NEW 6" X 215' UNDERDRAIN PIPE
- ⑥ STA 104+94.17 LT - 103+49.59 LT  
NEW 6" X 145' UNDERDRAIN PIPE
- ⑦ STA 108+20.00 RT - 103+25.13 RT  
NEW 6" X 500' UNDERDRAIN PIPE  
W/FLUSHING BASIN @ 108+20.00 RT  
FLUSHING BASIN @ 105+80.00 RT

- 900.640 SPECIAL PROVISION  
(6 INCH UNDERDRAIN PIPE, DRY SWALE)  
STA 104+30.00 RT - 103+50.00 RT  
NEW STORMWATER TREATMENT PRACTICE  
DISCHARGE PERMIT #6019-INDS  
NEW 6" X 81' UNDERDRAIN PIPE  
W/FLUSHING BASIN @ STA 104+30.00 RT
- EXISTING DRAINAGE  
STA 108+17.21 LT - 108+15.59 RT  
EXISTING 18" X 33' CGMP &  
HEADWALLS (2) = REMOVE
- ③ STA 301+00.76 LT - 300+59.56 RT  
EXISTING 15" X 51' CPEP & CONCRETE  
DI = REMOVE

NOTE: UNDERDRAIN CARRIER PIPE #23 AND #24 SHALL BE CONNECTED TO UNDERDRAIN FROM RETAINING WALL



EXISTING & PROPOSED WATERLINES ARE FOR REFERENCE ONLY. PLEASE REFER TO WATERLINE SHEETS 102-104



PROJECT NAME:	MILTON	PLOT DATE:	23-FEB-2011
PROJECT NUMBER:	STP 5800 (2)	DRAWN BY:	D. LYMAN
FILE NAME:	+92d289bdr.dgn	CHECKED BY:	J. DEVLIN
PROJECT LEADER:	J. SCHULTZ	DRAINAGE LAYOUT 2	SHEET 31 OF 104