

401.10 AGGREGATE SURFACE COURSE
 STA 302+97.06 RT (22.4' - GRAVEL DRIVE)
 STA 303+37.16 LT (16.0' - GRAVEL DRIVE)
 STA 303+85.78 RT (22.7' - GRAVEL DRIVE)
 STA 304+83.64 LT (15.8' - GRAVEL DRIVE)

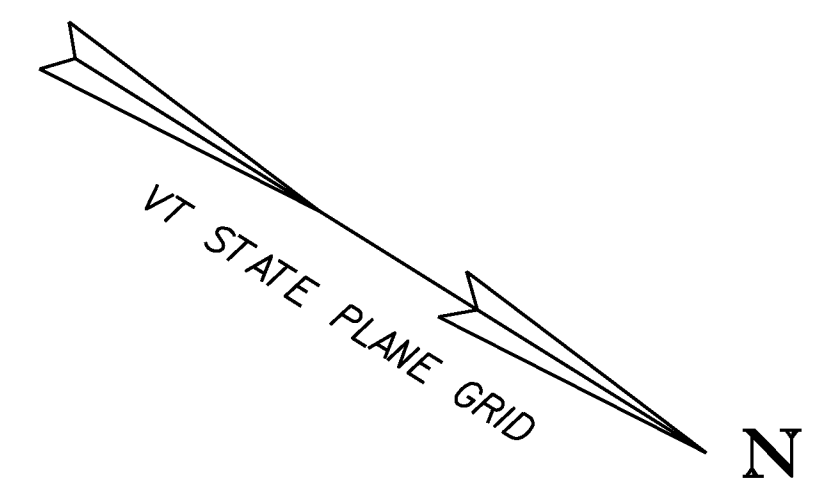
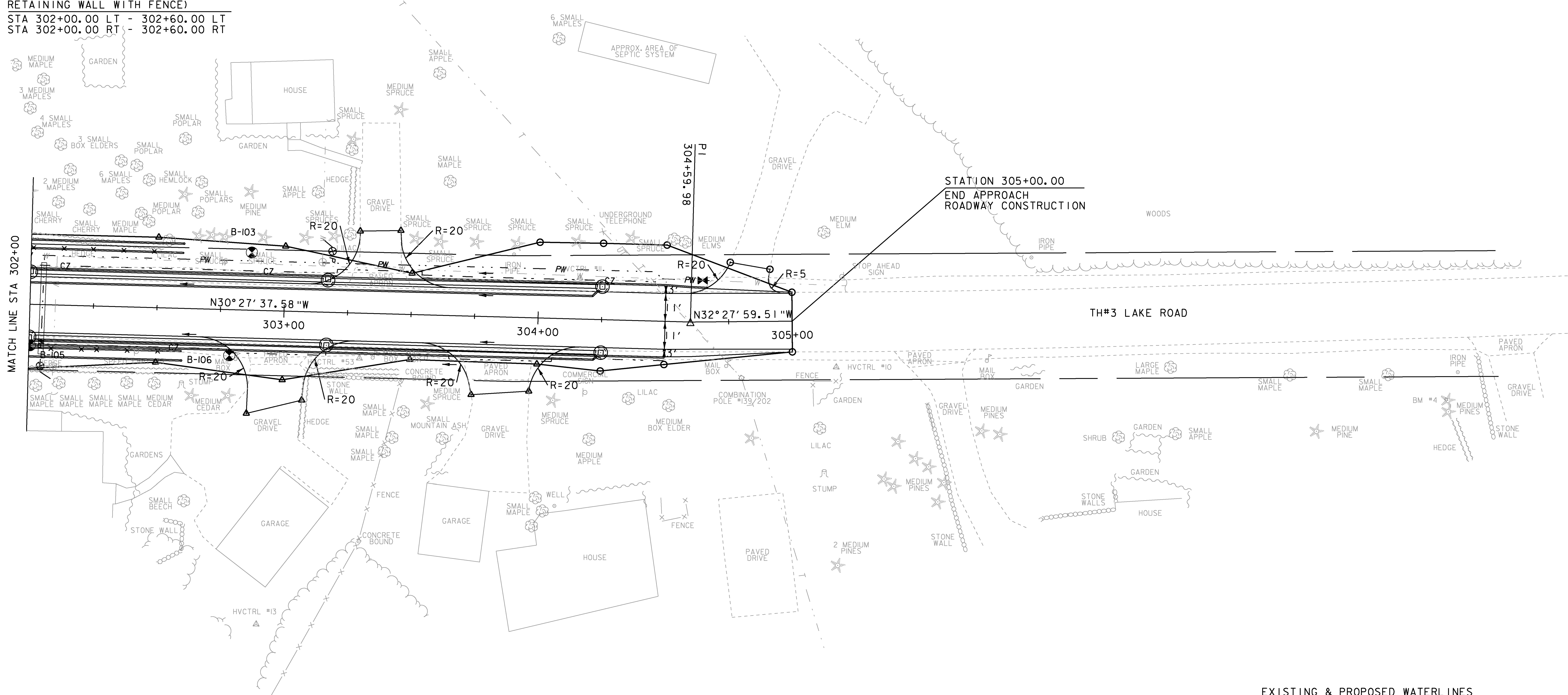
900.675 SPECIAL PROVISION
 (HAND-PLACED BITUMINOUS CONCRETE MATERIAL, DRIVES)
 STA 302+97.06 RT (PAVED DRIVE APRON)
 STA 303+37.16 LT (PAVED DRIVE APRON)
 STA 303+85.78 RT (PAVED DRIVE APRON)
 STA 304+83.64 LT (PAVED DRIVE APRON)

900.675 SPECIAL PROVISION
 (PRECAST CONCRETE GRAVITY
 RETAINING WALL WITH FENCE)
 STA 302+00.00 LT - 302+60.00 LT
 STA 302+00.00 RT - 302+60.00 RT

616.21 VERTICAL GRANITE CURB
 STA 302+00.00 LT - 303+20.50 LT
 STA 302+00.00 RT - 302+77.72 RT
 STA 303+16.94 RT - 303+65.31 RT
 STA 303+53.91 LT - 304+67.06 LT
 STA 304+05.68 RT - 304+50.00 RT

617.10 RELOCATE MAILBOX, SINGLE SUPPORT
 STA 302+81.43 RT
 STA 303+35.38 RT
 STA 303+56.30 RT

210.10 COLD PLANING, BITUMINOUS PAVEMENT
 STA 304+50.00 - 305+00.00



EXISTING & PROPOSED WATERLINES
 ARE FOR REFERENCE ONLY. PLEASE
 REFER TO WATERLINE SHEETS 102-104



PROJECT NAME:	MILTON	PLOT DATE:	23-FEB-2011
PROJECT NUMBER:	STP 5800 (2)	DRAWN BY:	D. LYMAN
FILE NAME:	+92d289bdr.dgn	CHECKED BY:	J. DEVLIN
PROJECT LEADER:	J. SCHULTZ	LAYOUT SHEET	4
DESIGNED BY:	D. LYMAN	SHEET	27 OF 104