

900.675 SPECIAL PROVISION
 (PRECAST CONCRETE GRAVITY
 RETAINING WALL WITH FENCE)
 STA 300+70.00 LT - 302+00.00 LT
 STA 300+70.00 RT - 302+00.00 RT

CONSTRUCT DRIVE
 STA 200+32.31 LT (13.9' - PAVED)
 STA 200+49.49 LT (11.3' - PAVED)
 STA 106+63.93 RT (18.0' - PAVED)
 STA 107+73.89 RT (57.5' - PAVED)

401.10 AGGREGATE SURFACE COURSE
 STA 104+31.22 LT (15.9' - GRAVEL DRIVE)
 STA 104+83.50 LT (16.7' - GRAVEL DRIVE)
 STA 105+87.17 LT (23.7' - GRAVEL DRIVE)

616.20 GRANITE SLOPE EDGING
 STA 105+83.13 RT - 106+55.80 RT
 STA 106+66.88 RT - 107+45.52 RT (ISLAND)

616.21 VERTICAL GRANITE CURB
 STA 106+75.00 LT - 300+65.45 LT 95' RAD
 STA 300+65.45 LT - 302+00.00 RT
 STA 108+34.53 LT - 301+00.00 RT 43' RAD
 STA 108+34.53 LT - 108+66.68 LT
 STA 301+00.00 RT - 302+00.00 RT

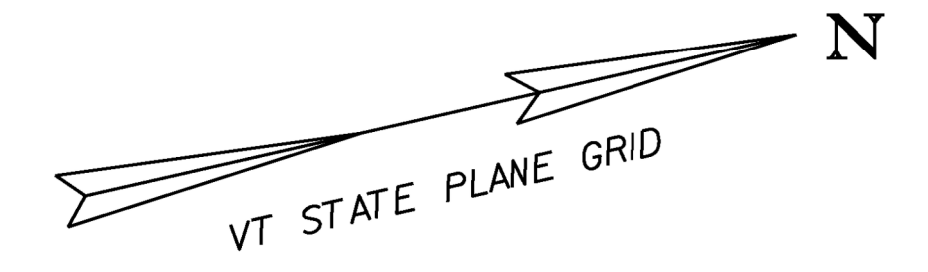
616.41 REMOVAL OF EXISTING CURB
 STA 106+14.19 RT - 106+54.51 RT
 STA 106+65.77 RT - 107+45.70 RT

617.10 RELOCATE MAILBOX, SINGLE SUPPORT
 STA 104+43.42 LT
 STA 104+97.78 LT
 STA 109+77.14 RT

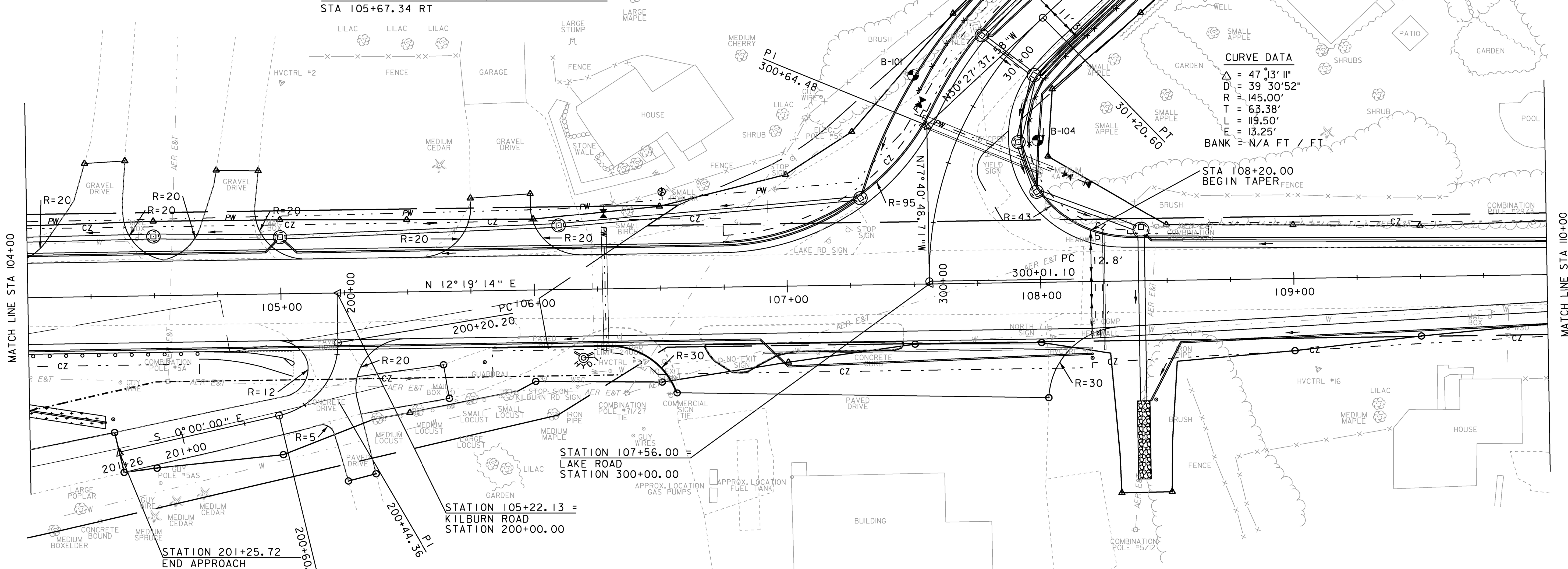
617.12 RELOCATE MAILBOX, MULTIPLE SUPPORT
 STA 105+67.34 RT

620.50 REMOVING AND RESETTING FENCE
 STA 106+30.34 LT - 106+60.00 LT
 620.55 REMOVAL OF EXISTING FENCE
 STA 301+40.00 LT - 301+76.90 LT
 629.20 ADJUST ELEVATION OF VALVE BOX
 STA 106+16.47 RT
 STA 106+29.59 RT
 STA 107+11.80 RT

203.28 EXCAVATION OF SURFACES AND PAVEMENTS
 STA 105+29.22 RT - 106+14.61 RT
 STA 105+98.99 LT - 106+23.85 LT
 STA 106+28.45 LT - 300+95.64 LT



CURVE DATA
 $\Delta = 47^\circ 13' 11''$
 $D = 39^\circ 30' 52''$
 $R = 145.00'$
 $T = 63.38'$
 $L = 119.50'$
 $E = 13.25'$
 BANK = N/A FT / FT



CURVE DATA
 $\Delta = 77^\circ 40' 45''$
 $D = 190^\circ 59' 09''$
 $R = 30.00'$
 $T = 24.15'$
 $L = 40.67'$
 $E = 8.52'$
 BANK = N/A FT / FT

621.21 HD STEEL BEAM GUARDRAIL, GALVANIZED
 STA 104+00.00 RT - 104+67.26 RT
 621.50 MANUFACTURED TERMINAL SECTION, FLARED
 STA 104+67.26 RT - 105+04.79 RT
 621.80 REMOVAL AND DISPOSAL OF GUARDRAIL
 STA 105+35.69 RT - 105+92.83 RT
 625.10 SLEEVES FOR UTILITIES (1 x 8") (PVC)
 FOR FUTURE USE - PLUG OR CAP BOTH ENDS
 STA 106+90.00 RT - 108+20.00 RT
 STA 108+25.00 LT - 108+25.00 RT
 STA 300+60.00 LT - 300+60.00 RT

900.675 SPECIAL PROVISION
 (HAND-PLACED BITUMINOUS CONCRETE MATERIAL, DRIVES)
 STA 104+31.22 LT (PAVED DRIVE APRON)
 STA 104+83.50 LT (PAVED DRIVE APRON)
 STA 105+87.17 LT (PAVED DRIVE APRON)

EXISTING & PROPOSED WATERLINES
 ARE FOR REFERENCE ONLY. PLEASE
 REFER TO WATERLINE SHEETS 102-104



PROJECT NAME: MILTON	
PROJECT NUMBER: STP 5800 (2)	
FILE NAME: +92d289bdr.dgn	PLOT DATE: 23-FEB-2011
PROJECT LEADER: J. SCHULTZ	DRAWN BY: D. LYMAN
DESIGNED BY: D. LYMAN	CHECKED BY: J. DEVLIN
LAYOUT SHEET 2	SHEET 23 OF 104