

401.10 AGGREGATE SURFACE COURSE
 STA 302+97.06 RT (22.4' - GRAVEL DRIVE)
 STA 303+37.16 LT (16.0' - GRAVEL DRIVE)
 STA 303+85.78 RT (22.7' - GRAVEL DRIVE)
 STA 304+83.64 LT (15.8' - GRAVEL DRIVE)

900.675 SPECIAL PROVISION
 (HAND-PLACED BITUMINOUS CONCRETE MATERIAL, DRIVES)

STA 302+97.06 RT (PAVED DRIVE APRON)
 STA 303+37.16 LT (PAVED DRIVE APRON)
 STA 303+85.78 RT (PAVED DRIVE APRON)
 STA 304+83.64 LT (PAVED DRIVE APRON)

900.675 SPECIAL PROVISION
 (PRECAST CONCRETE GRAVITY
 RETAINING WALL WITH FENCE)

STA 302+00.00 LT - 302+60.00 LT
 STA 302+00.00 RT - 302+60.00 RT

616.21 VERTICAL GRANITE CURB
 STA 302+00.00 LT - 303+20.50 LT
 STA 302+00.00 RT - 302+77.72 RT
 STA 303+16.94 RT - 303+65.31 RT
 STA 303+53.91 LT - 304+67.06 LT
 STA 304+05.68 RT - 304+50.00 RT

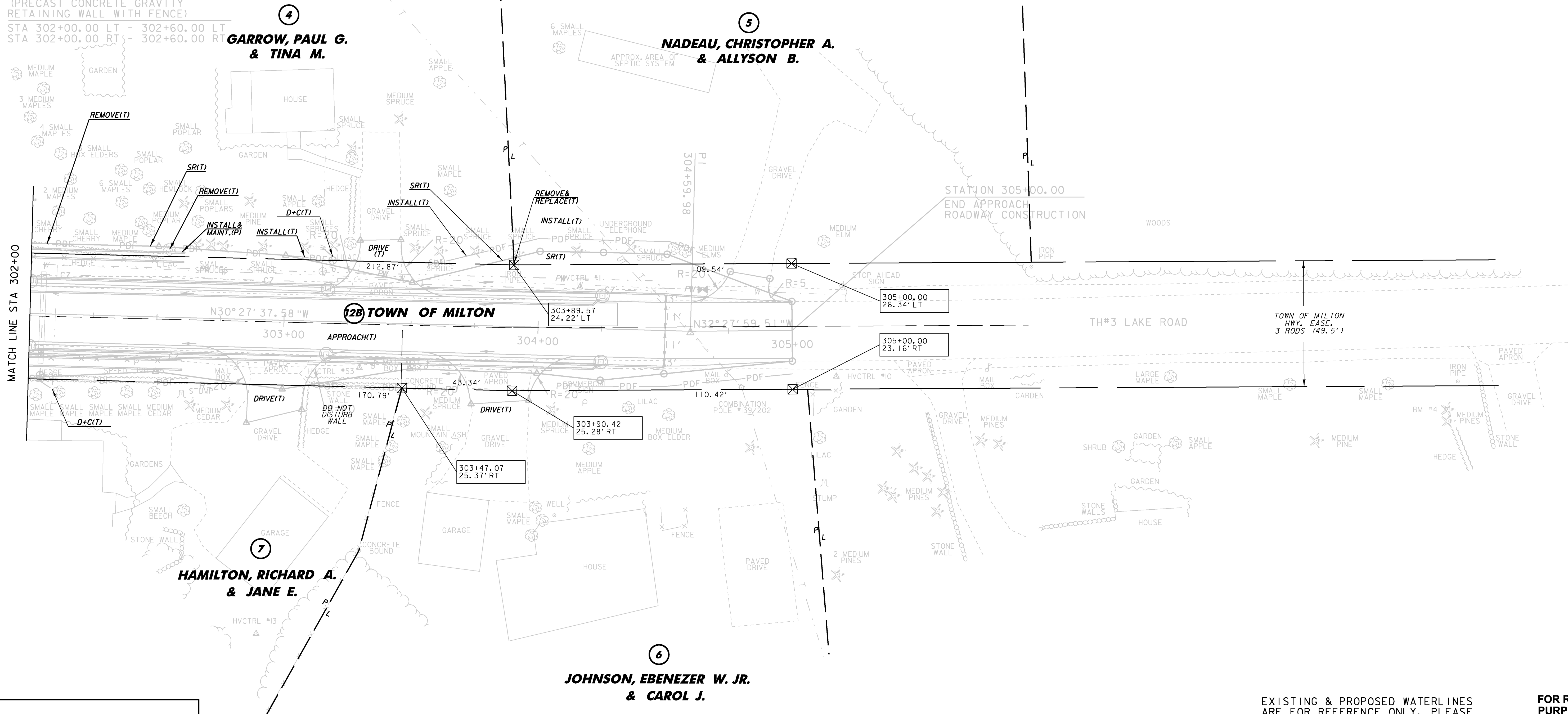
617.10 RELOCATE MAILBOX, SINGLE SUPPORT

STA 302+81.43 RT
 STA 303+35.38 RT
 STA 303+56.30 RT

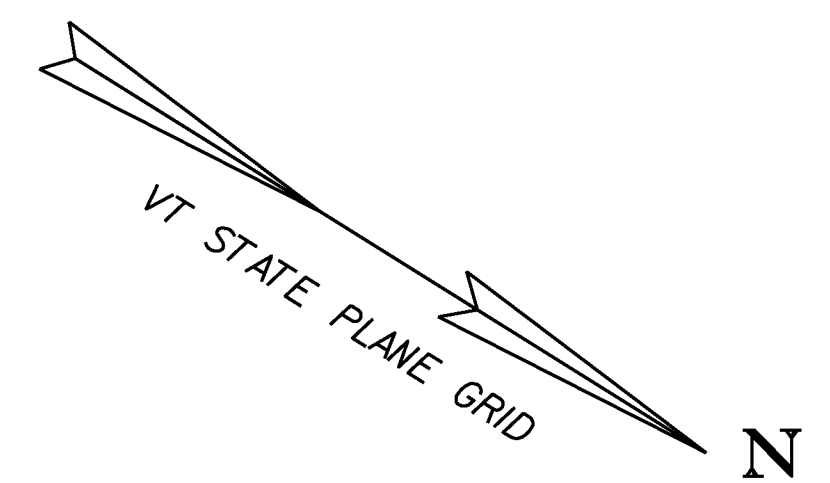
210.10 COLD PLANING, BITUMINOUS PAVEMENT

STA 304+50.00 - 305+00.00

EXISTING R.O.W. (CALCULATED)	
REMOVE & REPLACE PROPERTY MARKERS	
EXISTING	PROPOSED
I.P. PIPE 303+89.90 24.75' LT	I.P. 303+89.57 24.22' LT



MATCH LINE STA 302+00



LINES SHOWN ON THIS PLAN AS EXISTING PROPERTY LINES P/L ARE BELIEVED TO BE ACCURATE BUT SHOULD NOT BE RELIED UPON FOR PURPOSES UNRELATED TO THE STATE OF VERMONT'S ACQUISITION OF LAND AND RIGHTS FOR THIS PROJECT.



EXISTING & PROPOSED WATERLINES ARE FOR REFERENCE ONLY. PLEASE REFER TO WATERLINE SHEETS 102-104

FOR R.O.W. PURPOSES ONLY

R.O.W. LAYOUT SHEET 4

PROJECT NAME:	MILTON	PLOT DATE:	23-FEB-2011
PROJECT NUMBER:	STP 5800 (2)	DRAWN BY:	D. LYMAN
FILE NAME:	92d289\ROW\92d289r14.i	CHECKED BY:	J. DEVLIN
PROJECT LEADER:	J. SCHULTZ	R.O.W. SHEET	28 OF 28
DESIGNED BY:	D. LYMAN	SHEET	19 OF 104