

900.675 SPECIAL PROVISION
(PRECAST CONCRETE GRAVITY
RETAINING WALL WITH FENCE)
STA 300+70.00 LT - 302+00.00 LT
STA 300+70.00 RT - 302+00.00 RT

CONSTRUCT DRIVE
STA 200+32.31 LT (13.9' - PAVED)
STA 200+49.49 LT (11.3' - PAVED)
STA 106+63.93 RT (18.0' - PAVED)
STA 107+73.89 RT (57.5' - PAVED)

401.10 AGGREGATE SURFACE COURSE
STA 104+31.22 LT (15.9' - GRAVEL DRIVE)
STA 104+83.50 LT (16.7' - GRAVEL DRIVE)
STA 105+87.17 LT (21.7' - GRAVEL DRIVE)

616.20 GRANITE SLOPE EDGING
STA 105+83.13 RT - 106+55.80 RT
STA 106+66.88 RT - 107+45.52 RT (ISLAND)

616.21 VERTICAL GRANITE CURB
STA 106+75.00 LT - 300+65.45 LT 95' RAD
STA 300+65.45 LT - 302+00.00 LT
STA 108+34.53 LT - 301+00.00 RT 43' RAD
STA 108+34.53 LT - 108+56.68 LT
STA 301+00.00 RT - 302+00.00 RT

616.41 REMOVAL OF EXISTING CURB
STA 106+14.19 RT - 106+54.51 RT
STA 106+65.77 RT - 107+45.70 RT

617.10 RELOCATE MAILBOX, SINGLE SUPPORT
STA 104+43.42 LT
STA 104+97.78 LT
STA 109+77.14 RT

617.12 RELOCATE MAILBOX, MULTIPLE SUPPORT
STA 105+67.34 RT

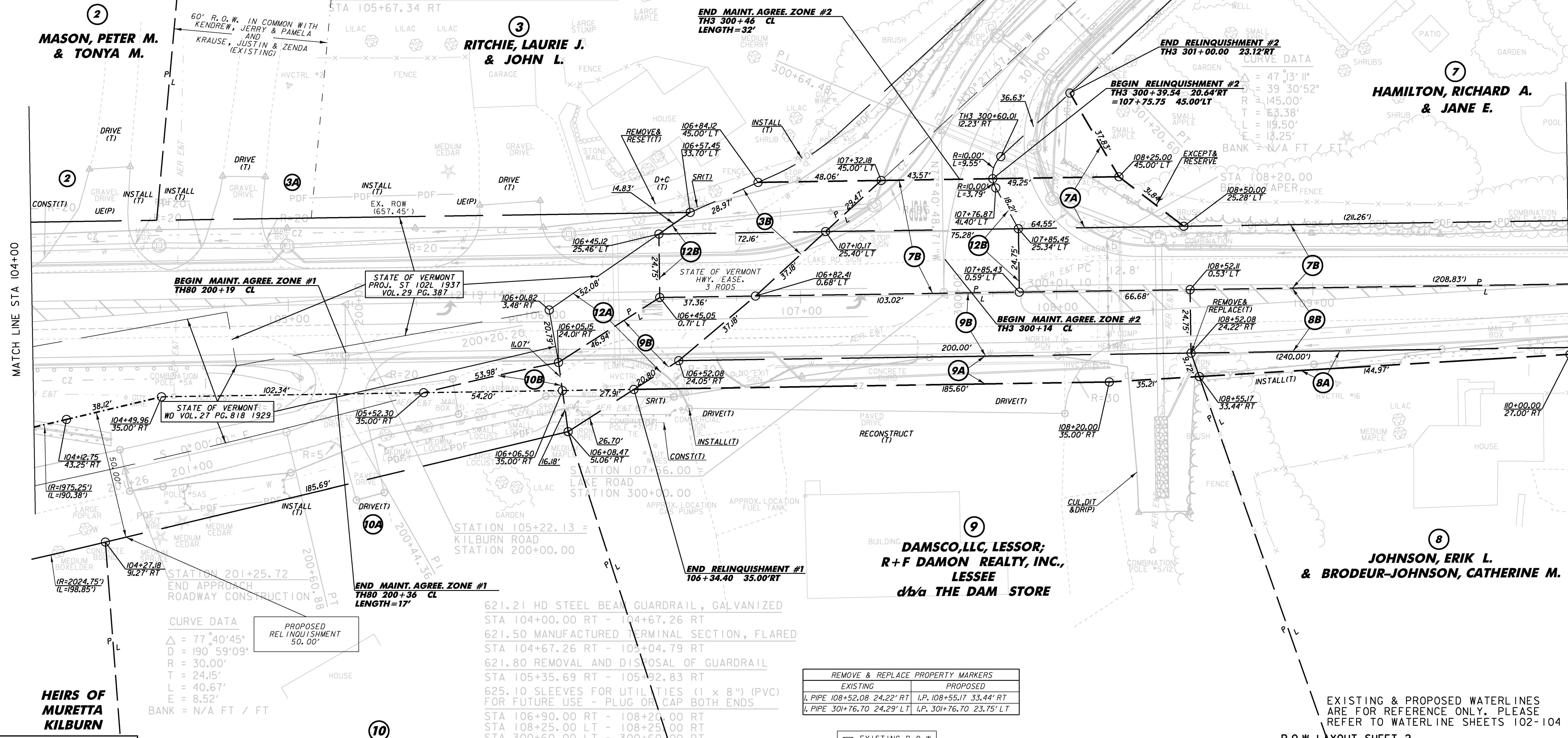
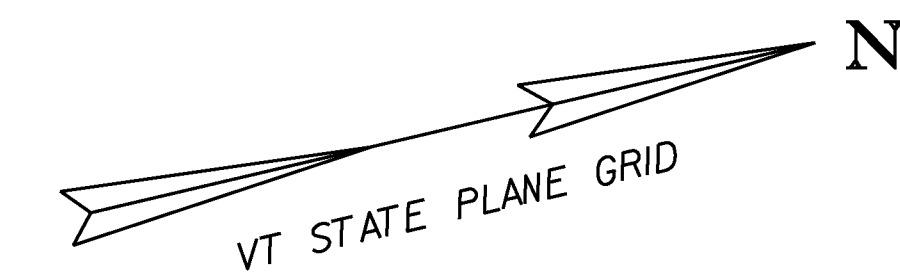
620.50 REMOVING AND RESETTING FENCE
STA 106+30.34 LT - 106+60.00 LT

620.55 REMOVAL OF EXISTING FENCE
STA 301+40.00 LT - 301+76.90 LT

629.20 ADJUST ELEVATION OF VALVE BOX
STA 106+16.47 RT
STA 106+29.59 RT
STA 107+11.80 RT

203.28 EXCAVATION OF SURFACES AND PAVEMENTS
STA 105+29.22 RT - 106+14.61 RT
STA 105+98.99 LT - 106+23.85 LT
STA 106+28.45 LT - 300+95.64 LT

4
**GARROW, PAUL G.
& TINA M.**
EXISTING UTILITY
EASEMENT - TOWN
OF MILTON



2
**MASON, PETER M.
& TONYA M.**

3
**RITCHIE, LAURIE J.
& JOHN L.**

7
**HAMILTON, RICHARD A.
& JANE E.**

9
**DAMSCO, LLC, LESSOR;
R+F DAMON REALTY, INC.,
LESSEE
d/b/a THE DAM STORE**

8
**JOHNSON, ERIK L.
& BRODEUR-JOHNSON, CATHERINE M.**

10
**DOUCETTE, WILLIAM P.
& SOBIESKI, JANET**

**HEIRS OF
MURETTA
KILBURN**

CURVE DATA
Δ = 77°40'45"
D = 190°59'09"
R = 30.00'
T = 24.15'
L = 40.67'
E = 8.52'
BANK = N/A FT / FT

PROPOSED
RELINQUISHMENT
50.00'

621.21 HD STEEL BEAM GUARDRAIL, GALVANIZED
STA 104+00.00 RT - 104+67.26 RT
621.50 MANUFACTURED TERMINAL SECTION, FLARED
STA 104+67.26 RT - 105+04.79 RT
621.80 REMOVAL AND DISPOSAL OF GUARDRAIL
STA 105+35.69 RT - 105+92.83 RT
625.10 SLEEVES FOR UTILITIES (1 x 8") (PVC)
FOR FUTURE USE - PLUG OR CAP BOTH ENDS
STA 106+90.00 RT - 108+20.00 RT
STA 108+25.00 LT - 108+25.00 RT
STA 300+60.00 LT - 300+60.00 RT

900.675 SPECIAL PROVISION
(HAND-PLACED BITUMINOUS CONCRETE MATERIAL, DRIVES)
STA 104+31.22 LT (PAVED DRIVE APRON)
STA 104+83.50 LT (PAVED DRIVE APRON)
STA 105+87.17 LT (PAVED DRIVE APRON)

REMOVE & REPLACE PROPERTY MARKERS	
EXISTING	PROPOSED
L.P. 108+52.08 24.22' RT	L.P. 108+55.17 33.44' RT
L.P. 301+76.70 24.29' LT	L.P. 301+76.70 23.75' LT

EXISTING R.O.W.
(CALCULATED)

EXISTING & PROPOSED WATERLINES
ARE FOR REFERENCE ONLY. PLEASE
REFER TO WATERLINE SHEETS 102-104

FOR R.O.W.
PURPOSES
ONLY

R.O.W. LAYOUT SHEET 2

PROJECT NAME: MILTON
PROJECT NUMBER: STP 5800 (2)
FILE NAME: 92d289\ROW\92d289r12.1
PLOT DATE: 23-FEB-2011
PROJECT LEADER: J. SCHULTZ
DESIGNED BY: D. LYMAN
R.O.W. SHEET 26 OF 28
DRAWN BY: D. LYMAN
CHECKED BY: J. DEVLIN
SHEET 17 OF 104



LINES SHOWN ON THIS PLAN AS EXISTING
PROPERTY LINES P/L ARE BELIEVED TO
BE ACCURATE BUT SHOULD NOT BE RELIED
UPON FOR PURPOSES UNRELATED TO THE
STATE OF VERMONT'S ACQUISITION OF LAND
AND RIGHTS FOR THIS PROJECT.