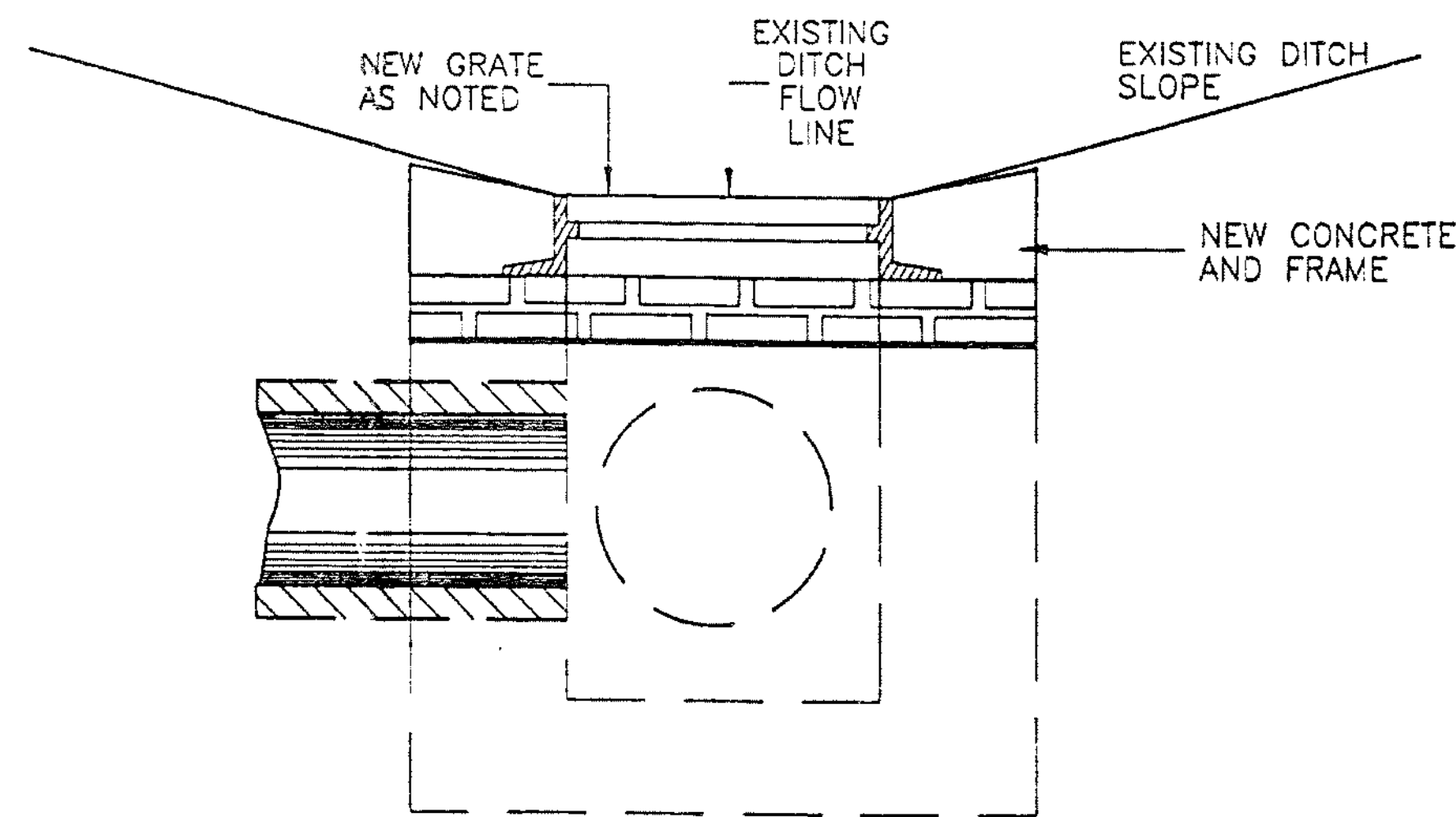
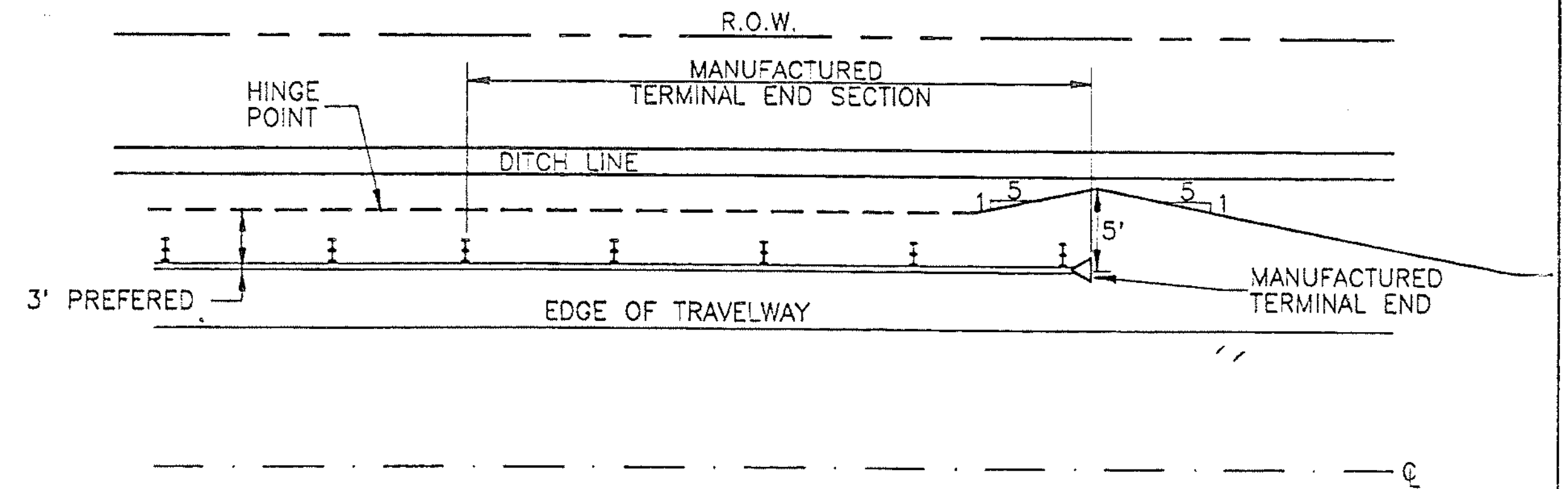
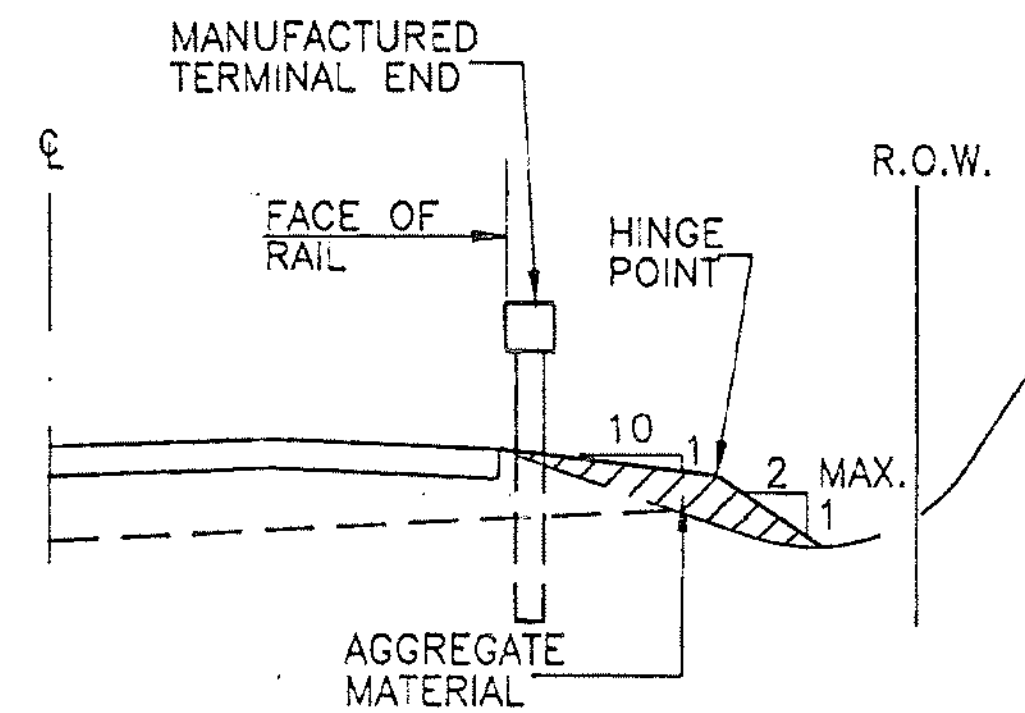


THROAT D.I. TOP REMOVAL

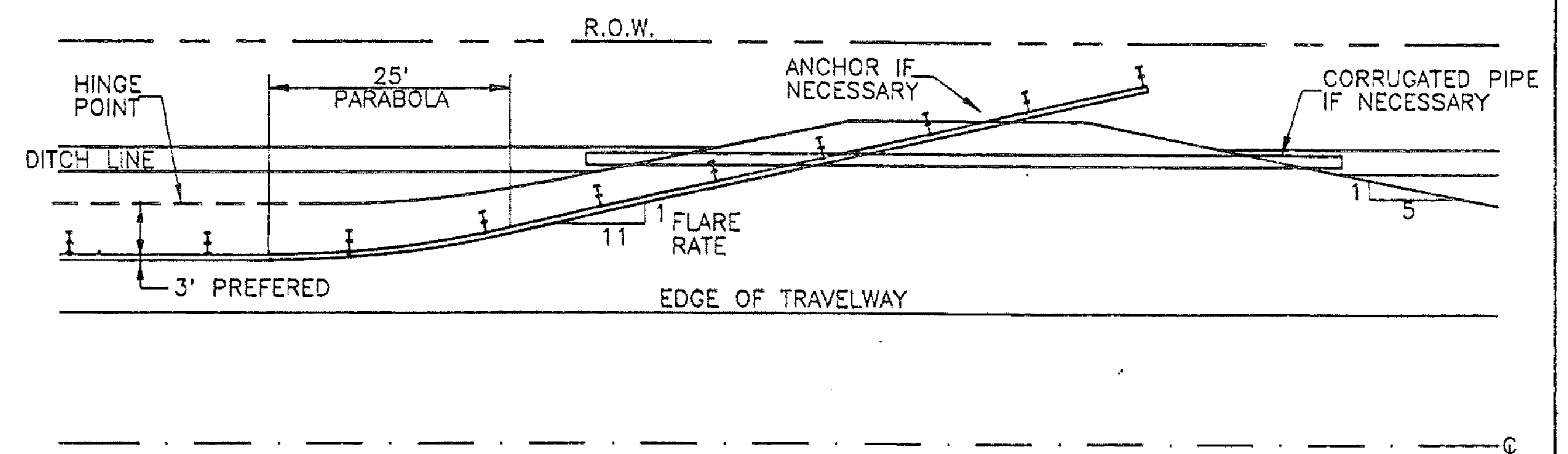
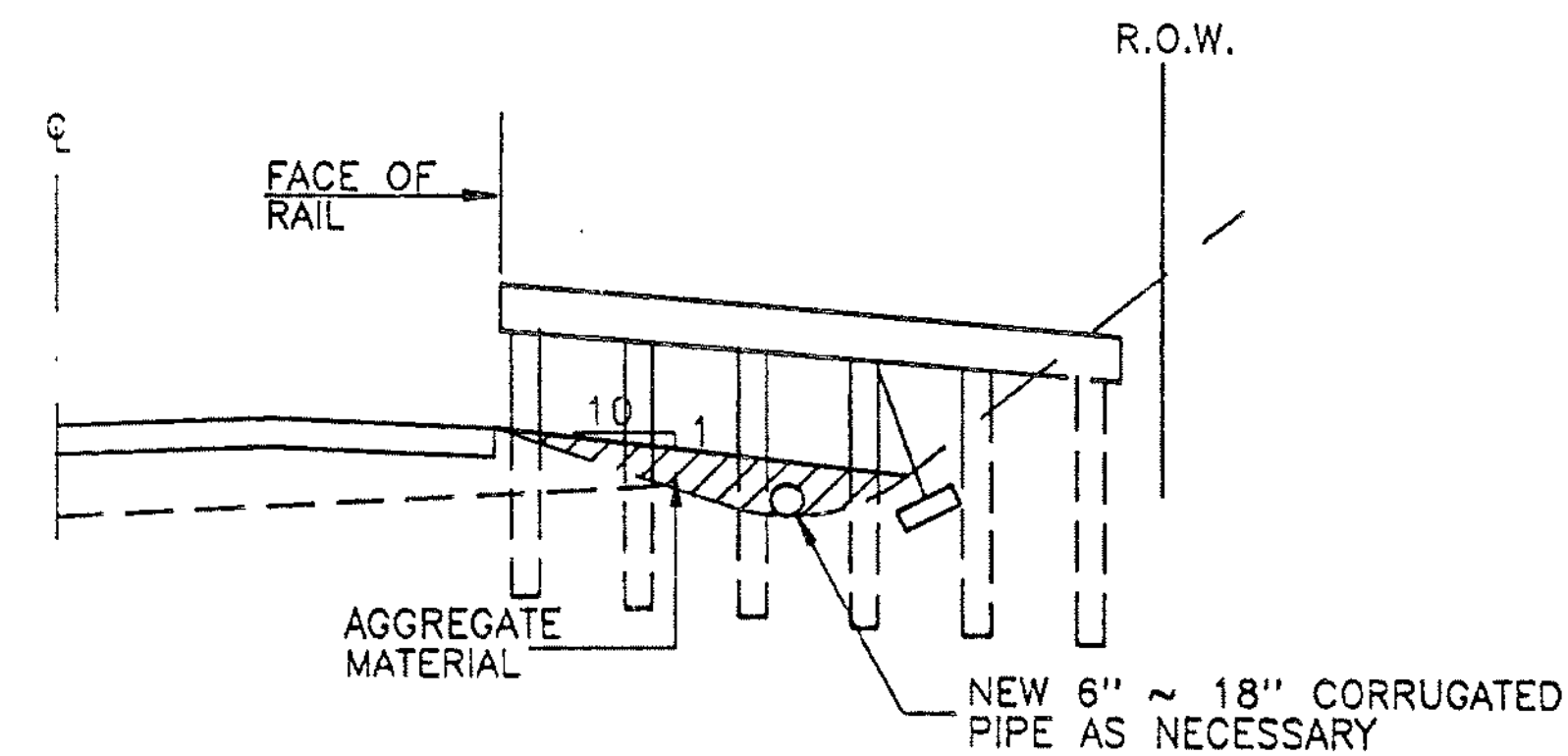


NEW D.I. TOP PLACEMENT

- NOTES: 1.) REMOVE THROAT DROP INLET TOPS, PEDESTALS AND DROP INLET WALLS TO ACCOMODATE NEW BRICKS, D.I. COVERS, FRAMES AND GRATES TO MAINTAIN EXISTING DITCH FLOW LINES (SEE STD. D-8 FOR EXISTING D.I. DETAILS).
- 2.) REDUCE BRICK COURSES AS NECESSARY TO MAINTAIN EXISTING DITCH FLOW LINE.
- 3.) SEE STANDARDS D-11, D-15 AND D-16 FOR GRATE DETAIL.
- 4.) ALL REMOVAL AND RECONSTRUCTION, INCLUDING ALL MATERIALS AND LABOR, SHALL BE PAID FOR UNDER ITEM 604.41.



GUARD RAIL END SECTION DETAIL



DETAIL FOR BURIED GUARD RAIL ENDS INTO BACKSLOPES

<p>D.I. AND GUARD RAIL END SECTION DETAILS</p>	SURVEYED BY	N/A	DATE	N/A
	DRAWN BY	WBL	DATE	03/93
	SQUAD LEADER			
	DESIGN FILE NO.			
	PRF FILE		DATE PLOTTED	
	SHEFFIELD-GLOVER, BROWNINGTON-			
PROJ. NAME CHARLESTON, & GLOVER				
PROJ. NO. SP418015, SP426015, SP435015				
HTA FILE: GLVDIGR				
SHEET 05 OF 44 SHEETS				