

8 7 6 5 4 3 2 1

**BILL OF MATERIALS**

PANEL H (QUANTITIES ARE PER PANEL - MULTIPLY BY TOTAL NUMBER OF PANELS)

PART	DESCRIPTION	QUANTITY	LENGTH	WIDTH	THICKNESS	MATERIAL TYPE	TOLERANCE
P-H1	5 3/16" MAIN RAIL	4	2'-5 1/4"	-----	-----	ASTM A709 GR. 50	+/- 1/8"
P-H2	CROSS BAR	8	2'-4 1/2"	2"	1/4"	ASTM A709 GR. 50	+0/- 1/8"
P-H3	SUPPLEMENTAL BAR	3	2'-5 1/4"	1"	1/4"	ASTM A709 GR. 50	+/- 1/8"
P-H4	DIAGONAL BAR	8	2'-5 1/4"	1"	1/4"	ASTM A709 GR. 50	+/- 1/8"
TBH-1	TRIM BAR	2	2'-5"	5"	1/4"	ASTM A709 GR. 50	+0/- 1/8"
TBH-2	TRIM BAR	2	2'-5 3/4"	5"	1/4"	ASTM A709 GR. 50	+0/- 1/8"
FPH-1	FORM PAN	3	2'-5 1/4"	7 3/16"	20 GAUGE	ASTM A316	+0/- 1/8"
FPH-2	FORM PAN	2	2'-5 1/4"	3 1/16"	20 GAUGE	ASTM A316	+0/- 1/8"
BDP-1	BOLT DOWN PLATE	4	6 5/16"	3"	3/8"	ASTM A709 GR. 50	+0/- 1/8"
BT-1	BOLT	2	2"	-----	3/4" Ø	ASTM A325 HDG	-----
BT-2	BOLT	2	2 1/2"	-----	3/4" Ø	ASTM A325 HDG	-----
FW	WASHER	2	-----	-----	3/4" Ø	ASTM F436 HDG	-----
TW	TAPERED WASHER	2	-----	-----	3/4" Ø	ASTM F436 HDG	-----
NT	NUT	4	-----	-----	3/4" Ø	ASTM F563 HDG	-----
TAS-1	ACCESS SLEEVE	4	-----	-----	-----	ASTM A500 GR A	+0/- 1/8"

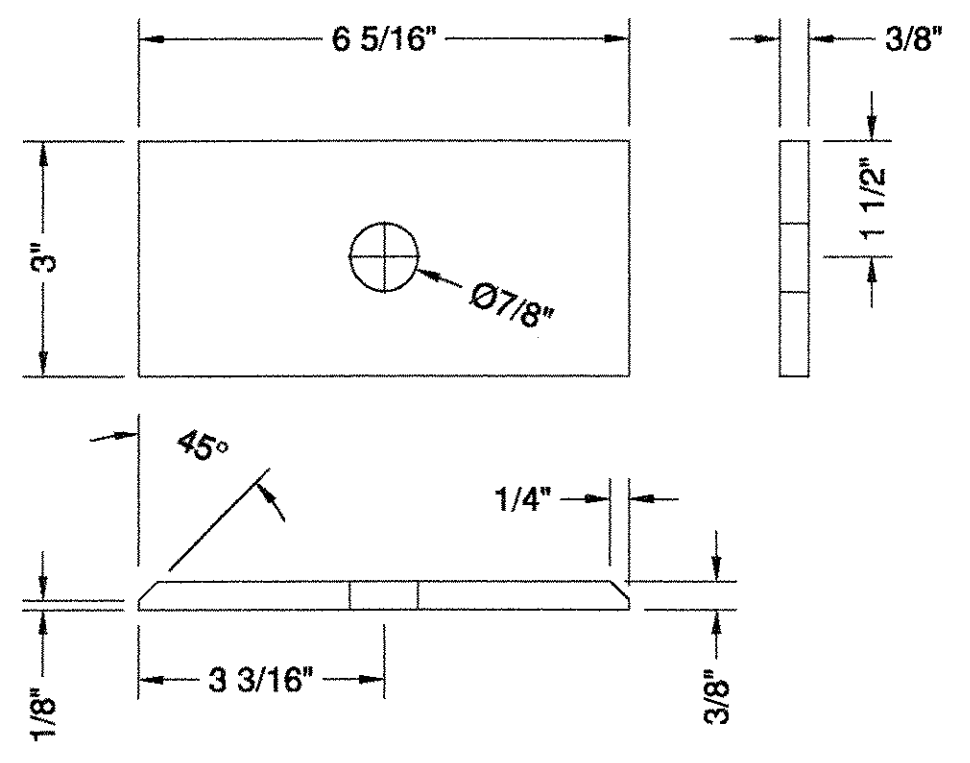
- SHIPPED LOOSE
- SHIPPED LOOSE
- SHIPPED LOOSE
- SHIPPED LOOSE
- SHIPPED LOOSE

NOTE: REMOVABLE PANELS HAVE BOLT DOWN PLATES IN THE FOUR CORNERS ONLY. THE ENGINEER IS TO DEFINE WHETHER ADDITIONAL BOLT DOWN PLATES ARE REQUIRED.

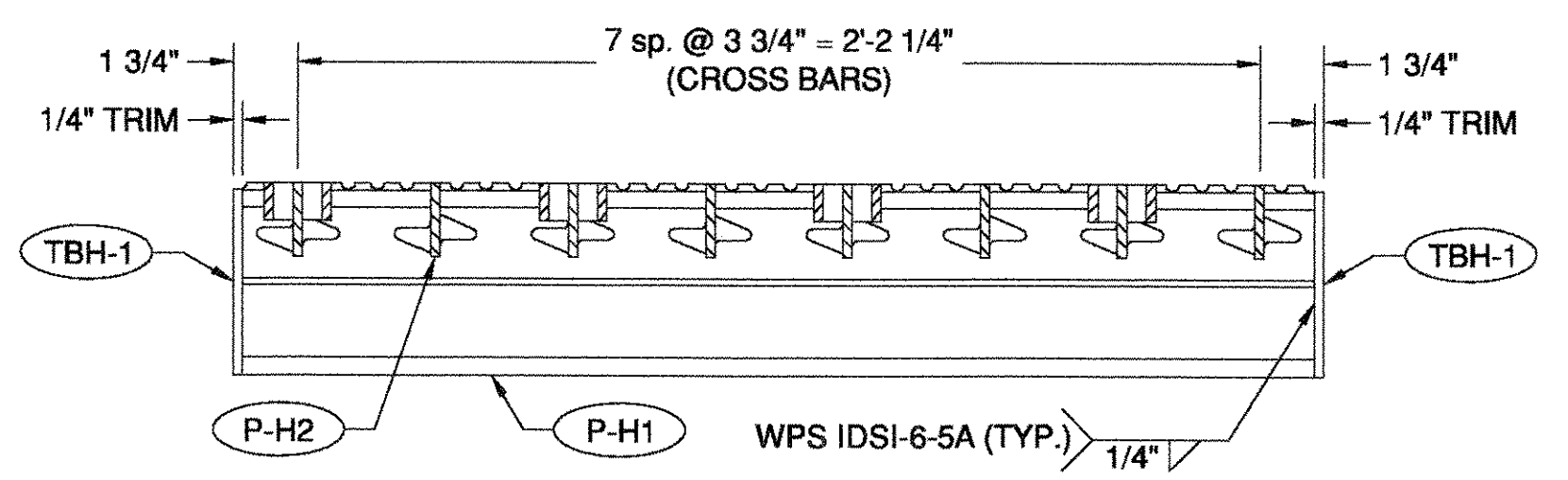
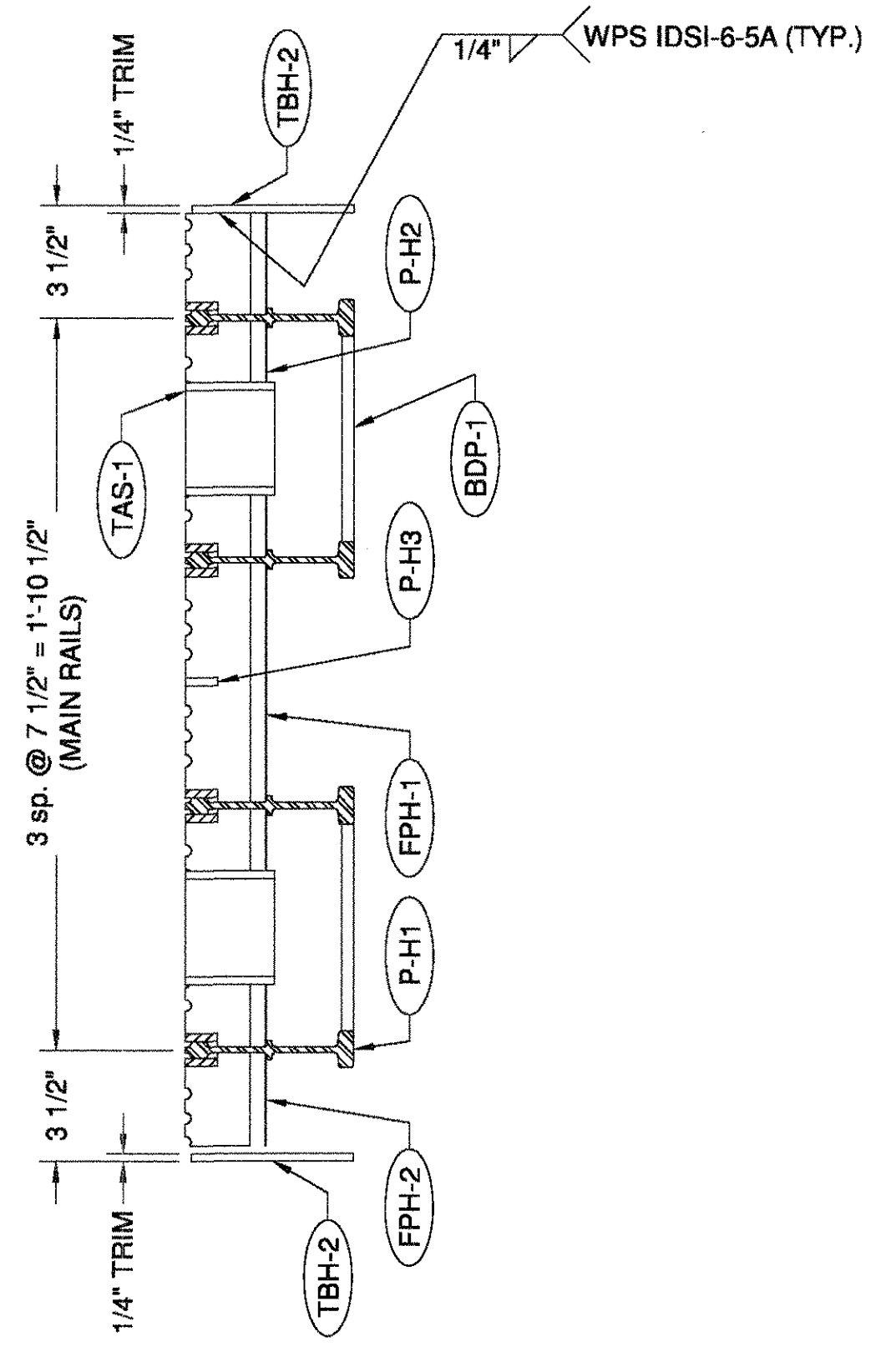
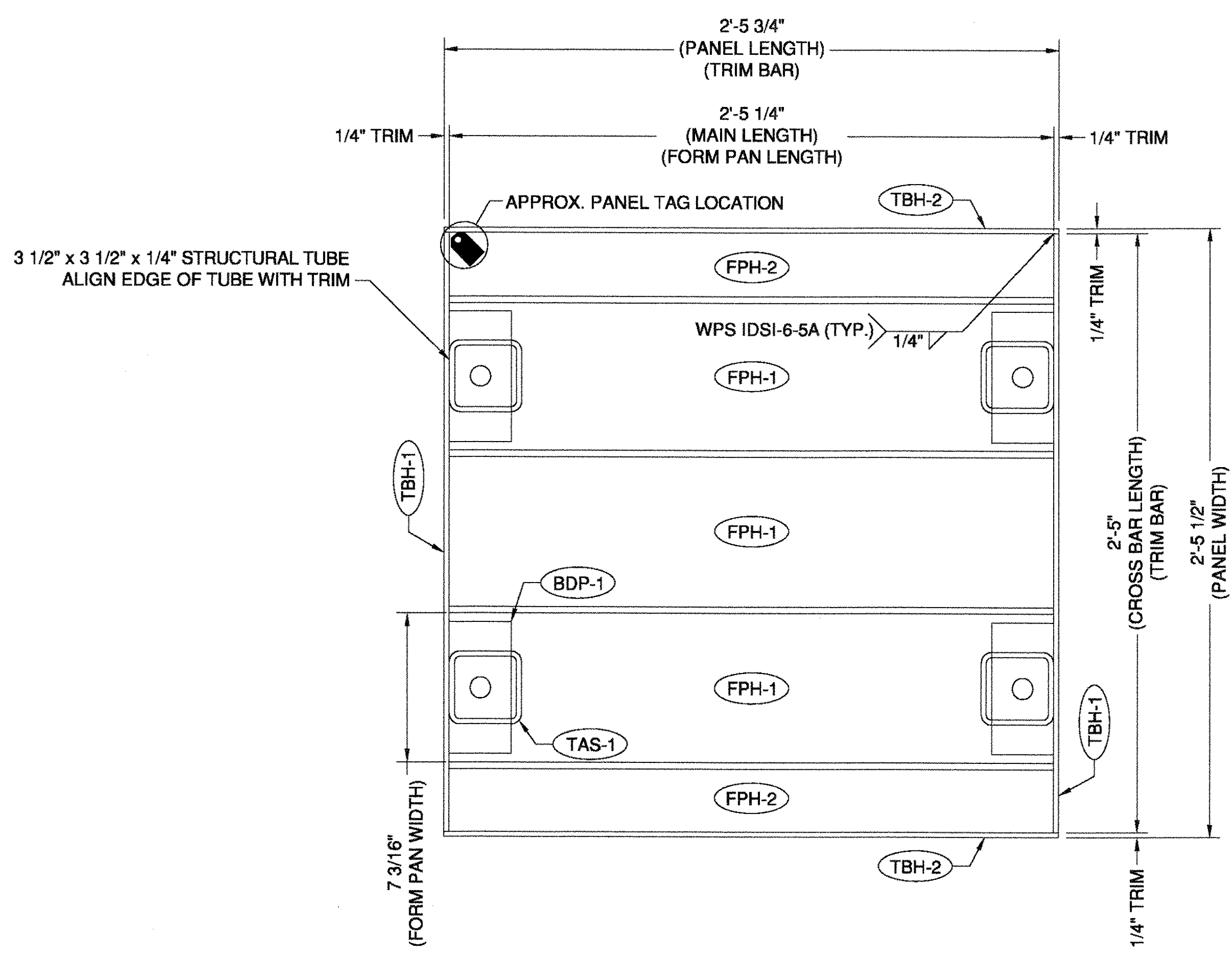
NOTE: SHOP TO CUT GRID DECK COMPONENTS AS REQUIRED TO ALLOW INSTALLATION OF TUBULAR ACCESS SLEEVES.

NOTE: CREATE PANEL FROM C PANELS' SCRAP.

REVISIONS		
REV	DESCRIPTION	DATE
0	INITIAL SUBMITTAL FOR REVIEW	10/24/2007



**BDP-1 DETAIL**



**PANEL H LAYOUT**  
1 TOTAL - AS SHOWN

RECEIVED  
OK'D BY SSS OK'D BY [Signature]  
OCT 29 2007  
RESUBMIT APPROVED [Signature]  
BY DATE 11/6/07

<p>interlocking deck systems international</p> <p>115 41st Street Pittsburgh, PA 15201</p>	<p><b>PANEL H LAYOUT</b></p> <p><b>GRAND ISLE DRAWBRIDGE</b></p> <p><b>VERMONT AGENCY OF TRANS.</b></p>		
	<p>SCALE N.T.S.</p>	<p>DWG NO. ID-0697-07</p>	<p>SHEET 12</p>
	<p>P.O. NUMBER R757</p>	<p>BY WPO APPROVED JMO</p>	<p>DATE 11/6/07</p>

8 7 6 5 4 3 2 1