

8 7 6 5 4 3 2 1

BILL OF MATERIALS

PANEL D (QUANTITIES ARE PER PANEL - MULTIPLY BY TOTAL NUMBER OF PANELS)

PART	DESCRIPTION	QUANTITY	LENGTH	WIDTH	THICKNESS	MATERIAL TYPE	TOLERANCE
P-D1	5 3/16" MAIN RAIL	4	2'-5 1/4"	-----	-----	ASTM A709 GR. 50	+/- 1/8"
P-D2	CROSS BAR	8	2'-5"	2"	1/4"	ASTM A709 GR. 50	+0/- 1/8"
P-D3	SUPPLEMENTAL BAR	3	2'-5 1/4"	1"	1/4"	ASTM A709 GR. 50	+/- 1/8"
P-D4	DIAGONAL BAR	8	2'-5 1/4"	1"	1/4"	ASTM A709 GR. 50	+/- 1/8"
TBD-1	TRIM BAR	2	2'-5"	5"	1/4"	ASTM A709 GR. 50	+0/- 1/8"
TBD-2	TRIM BAR	2	2'-5 3/4"	5"	1/4"	ASTM A709 GR. 50	+0/- 1/8"
BDP-1	BOLT DOWN PLATE	4	3"	6 3/8"	3/8"	ASTM A709 GR. 50	+0/- 1/16"
BT-1	BOLT	2	2"	-----	3/4" Ø	ASTM A325 HDG	-----
BT-2	BOLT	2	2 1/2"	-----	3/4" Ø	ASTM A325 HDG	-----
FW	WASHER	2	-----	-----	3/4" Ø	ASTM F436 HDG	-----
TW	TAPERED WASHER	2	-----	-----	3/4" Ø	ASTM F436 HDG	-----
NT	NUT	4	-----	-----	3/4" Ø	ASTM A563 HDG	-----

- SHIPPED LOOSE
- SHIPPED LOOSE
- SHIPPED LOOSE
- SHIPPED LOOSE
- SHIPPED LOOSE

NOTE: REMOVABLE PANELS HAVE BOLT DOWN PLATES IN THE FOUR CORNERS ONLY. THE ENGINEER IS TO DEFINE WHETHER ADDITIONAL BOLT DOWN PLATES ARE REQUIRED.

NOTE: PANEL TO BE FABRICATED USING CUT MATERIAL FROM PANEL TYPE A.

No additional Bolt down plates required

REVISIONS		
REV	DESCRIPTION	DATE
0	INITIAL SUBMITTAL FOR REVIEW	10/24/2007

D

D

C

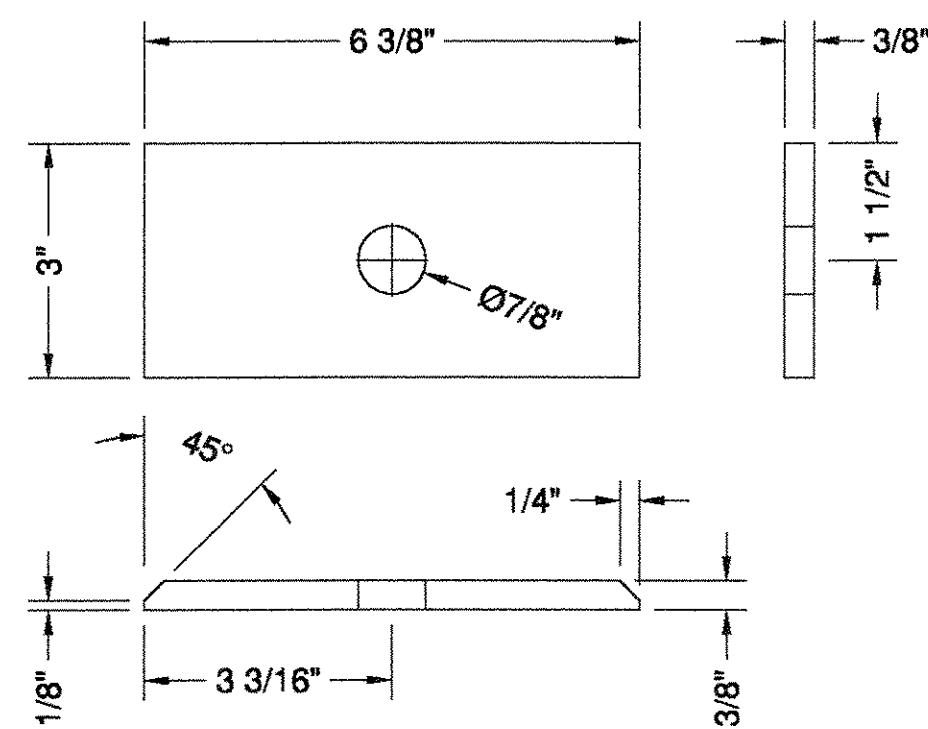
C

B

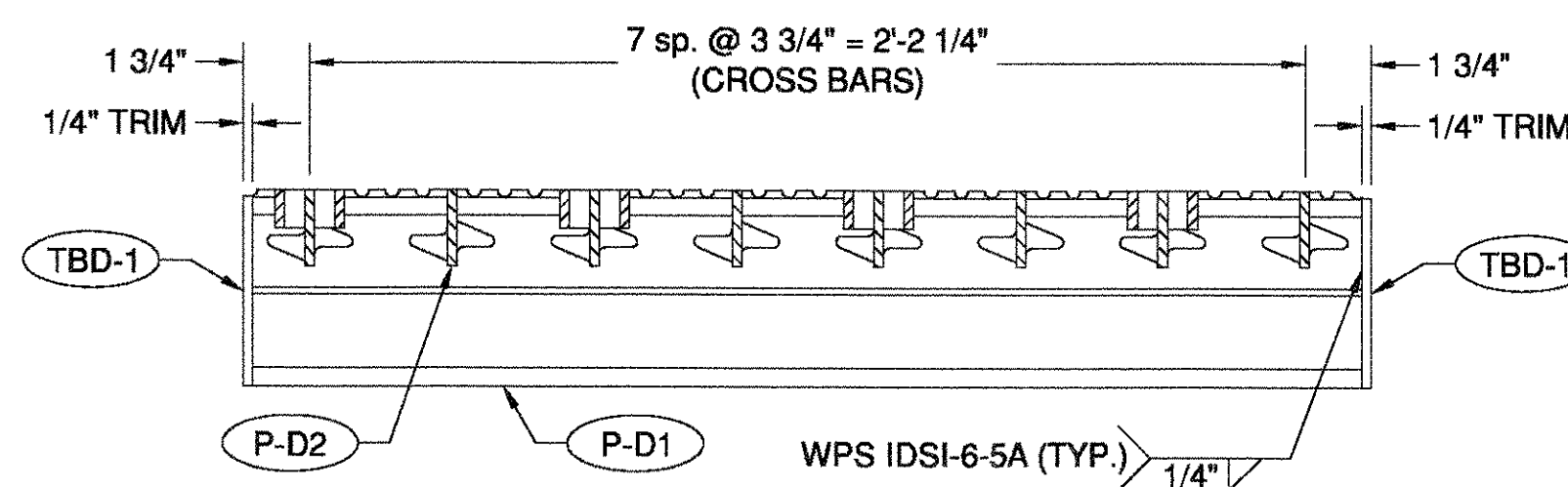
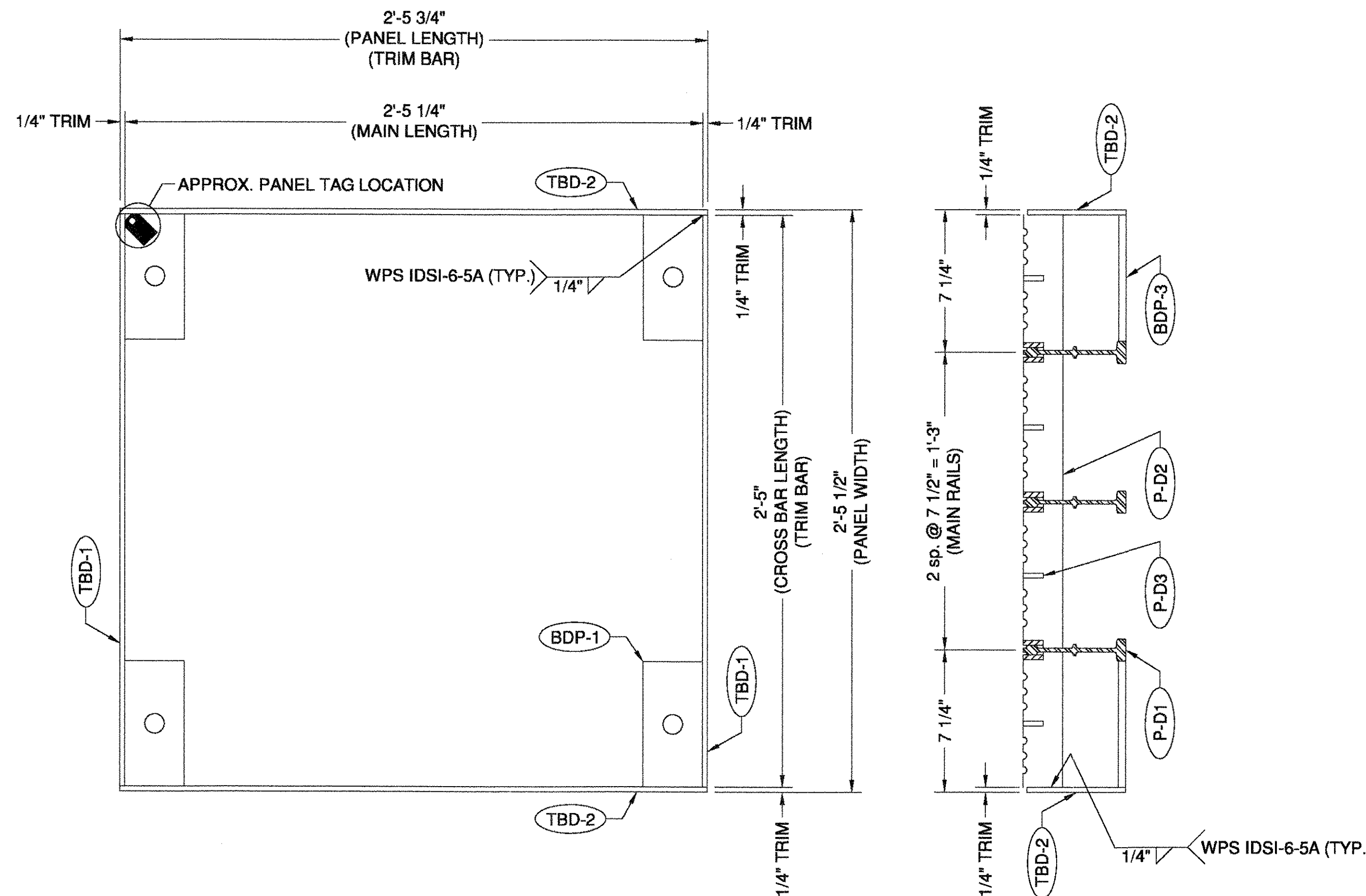
B

A

A




BDP-1 DETAIL



PANEL D LAYOUT
2 TOTAL - AS SHOWN
2 TOTAL - OPP. HAND

RECEIVED
CHK'D BY: SSS
OCT 29 2007
RESUBMIT APPROVED
DATE 11/6/07

 interlocking deck systems international 115 41st Street Pittsburgh, PA 15201	PANEL D LAYOUT GRAND ISLE DRAWBRIDGE VERMONT AGENCY OF TRANS.	
	SIZE B	DWG NO. ID-0697-07
SCALE: N.T.S.	P.O. NUMBER: R757	BY: WPO APPROVED: JMO

8 7 6 5 4 3 2 1 056-DG 1