

8 7 6 5 4 3 2 1

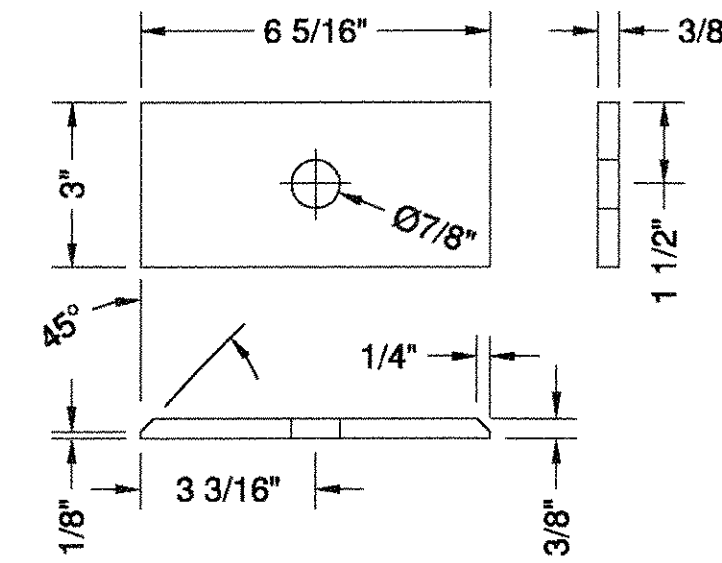
BILL OF MATERIALS

PANEL C (QUANTITIES ARE PER PANEL - MULTIPLY BY TOTAL NUMBER OF PANELS)

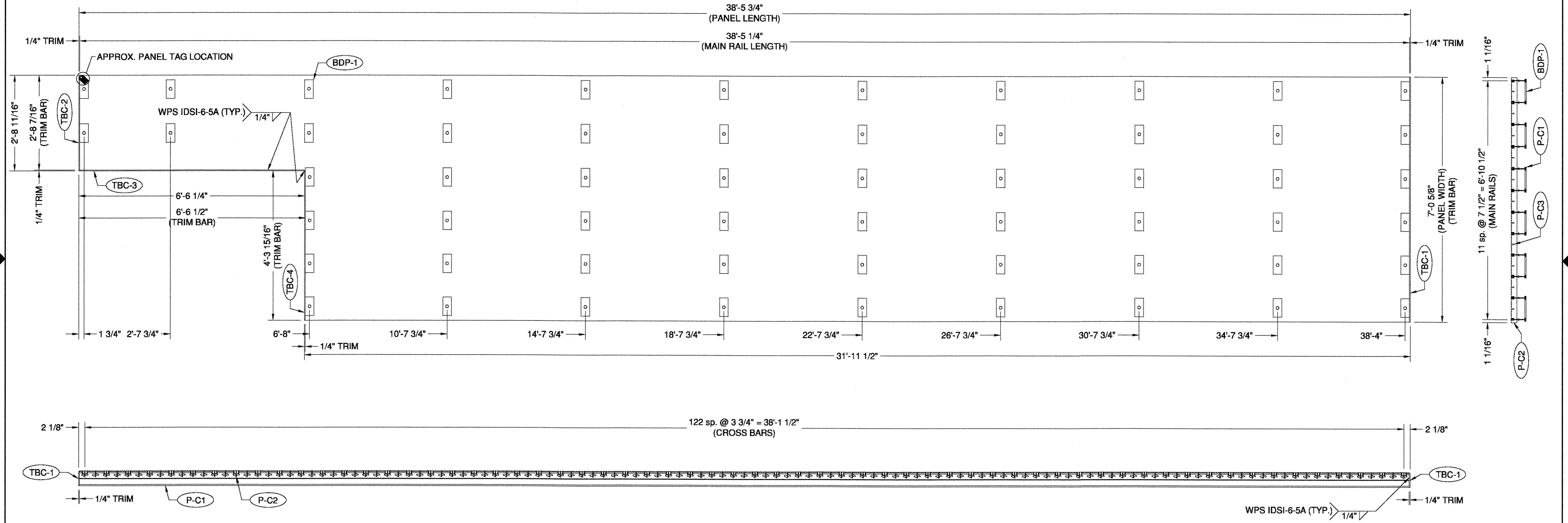
PART	DESCRIPTION	QUANTITY	LENGTH	WIDTH	THICKNESS	MATERIAL TYPE	TOLERANCE
P-C1	5 3/16" MAIN RAIL	12	38'-5 1/4"	-----	-----	ASTM A709 GR. 50	+/- 1/4"
P-C2	CROSS BAR	123	7'-0 5/8"	2"	1/4"	ASTM A709 GR. 50	+0/- 1/8"
P-C3	SUPPLEMENTAL BAR	11	38'-5 1/4"	1"	1/4"	ASTM A709 GR. 50	+/- 1/4"
P-C4	DIAGONAL BAR	22	38'-5 1/4"	1"	1/4"	ASTM A709 GR. 50	+0/- 1/4"
TBC-1	TRIM BAR	1	7'-0 5/8"	5"	1/4"	ASTM A709 GR. 50	+0/- 1/8"
TBC-2	TRIM BAR	1	2'-8 7/16"	5"	1/4"	ASTM A709 GR. 50	+0/- 1/8"
TBC-3	TRIM BAR	1	6'-6 1/2"	5"	1/4"	ASTM A709 GR. 50	+0/- 1/8"
TBC-4	TRIM BAR	1	4'-3 15/16"	5"	1/4"	ASTM A709 GR. 50	+0/- 1/8"
BDP-1	BOLTDOWN PLATE	58	6 5/16"	3"	3/8"	ASTM A709 GR. 50	+/- 1/32"
BT-1	BOLT	56	2"	-----	3/4" Ø	ASTM A325 HDG	-----
BT-2	BOLT	2	2 1/2"	-----	3/4" Ø	ASTM A325 HDG	-----
FW	WASHER	56	-----	-----	3/4" Ø	ASTM F436 HDG	-----
TW	TAPERED WASHER	2	-----	-----	3/4" Ø	ASTM A563 HDG	-----
NT	NUT	58	-----	-----	3/4" Ø	ASTM A563 HDG	-----

- SHIPPED LOOSE
- SHIPPED LOOSE
- SHIPPED LOOSE
- SHIPPED LOOSE
- SHIPPED LOOSE

REVISIONS		
REV	DESCRIPTION	DATE
0	INITIAL SUBMITTAL FOR REVIEW	10/24/2007



BDP-1 DETAIL



SHOP NOTE:
SHOP TO REUSE CUT MATERIAL TO FABRICATE PANELS E, F & H.

PANEL C LAYOUT (2 TOTAL)
C1 - AS SHOWN
C2 - OPP. HAND

RECEIVED
G'D BY SSS OK'D BY [Signature]
OCT 29 2007
RESUBMIT APPROVED [Signature]
BY DATE 11/6/07

 115 41st Street Pittsburgh, PA 15201	PANEL C LAYOUT	
	GRAND ISLE DRAWBRIDGE	
	VERMONT AGENCY OF TRANS.	
SCALE: N.T.S.	P.O. NUMBER: R757	BY: WPO APPROVED: JMO
DWG NO. ID-0697-07	SHEET 7	DATE 11/6/07

8 7 6 5 4 3 2 1