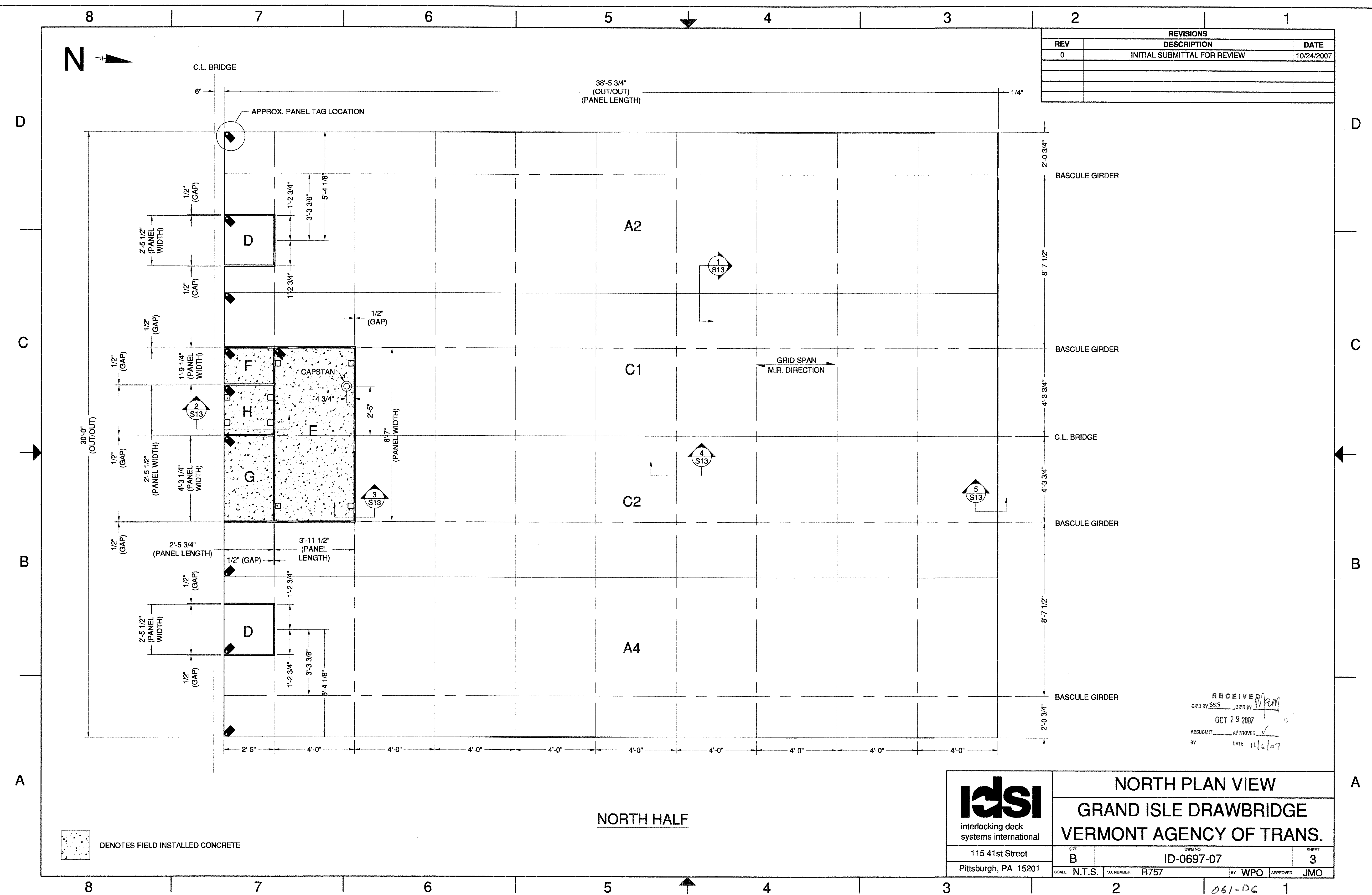


REVISIONS		
REV	DESCRIPTION	DATE
0	INITIAL SUBMITTAL FOR REVIEW	10/24/2007



RECEIVED
 OK'D BY SSS OK'D BY [Signature]
 OCT 29 2007
 RESUBMIT APPROVED [Signature]
 BY DATE 11/6/07

DENOTES FIELD INSTALLED CONCRETE

NORTH HALF

interlocking deck systems international 115 41st Street Pittsburgh, PA 15201	NORTH PLAN VIEW GRAND ISLE DRAWBRIDGE VERMONT AGENCY OF TRANS.	
	SIZE B SCALE N.T.S.	DWG NO. ID-0697-07 P.O. NUMBER R757