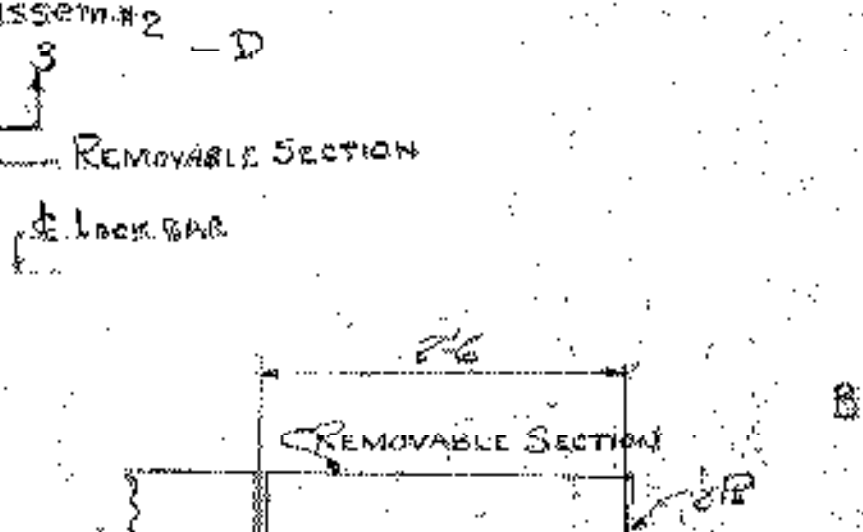
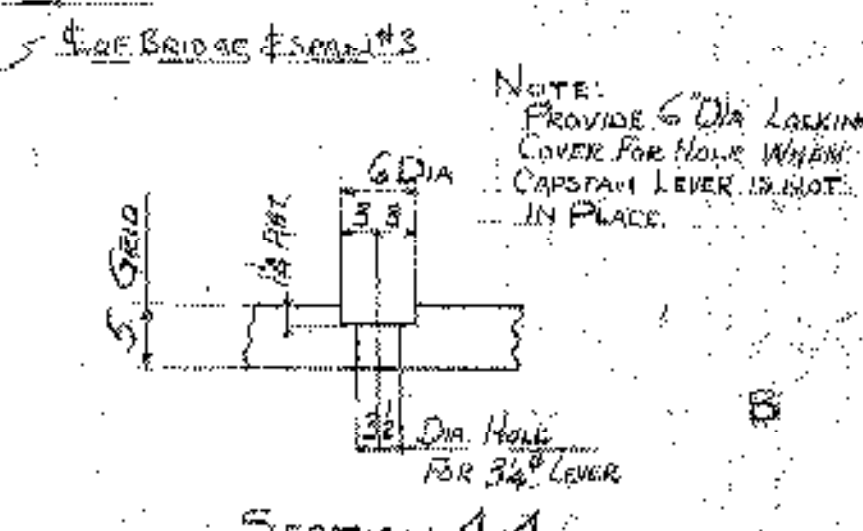
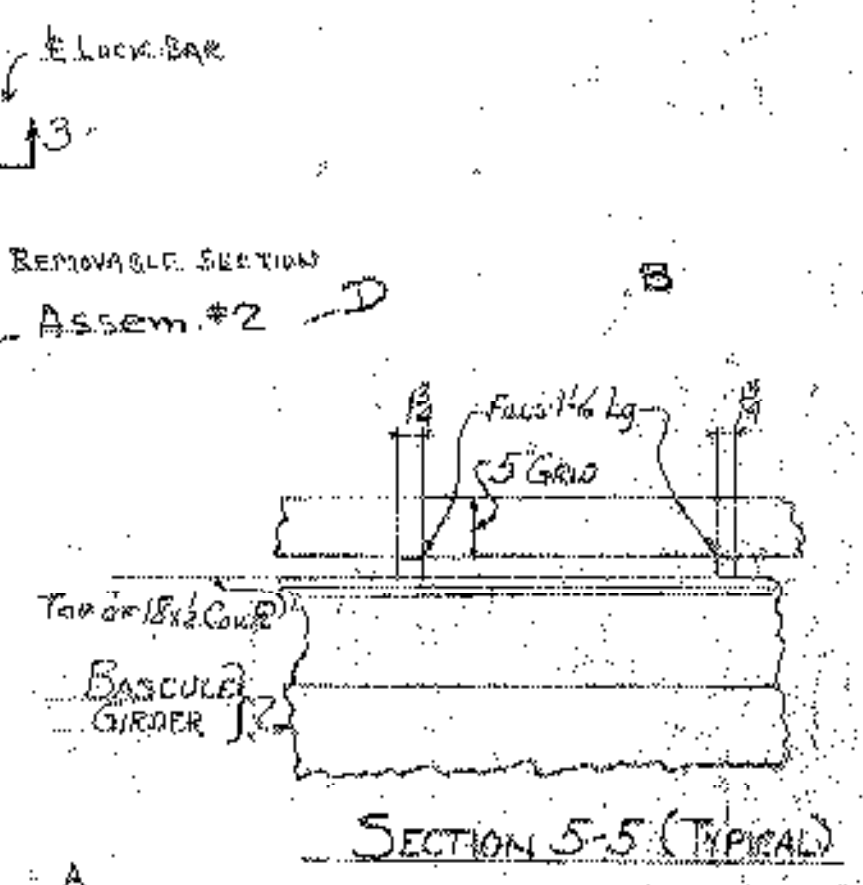
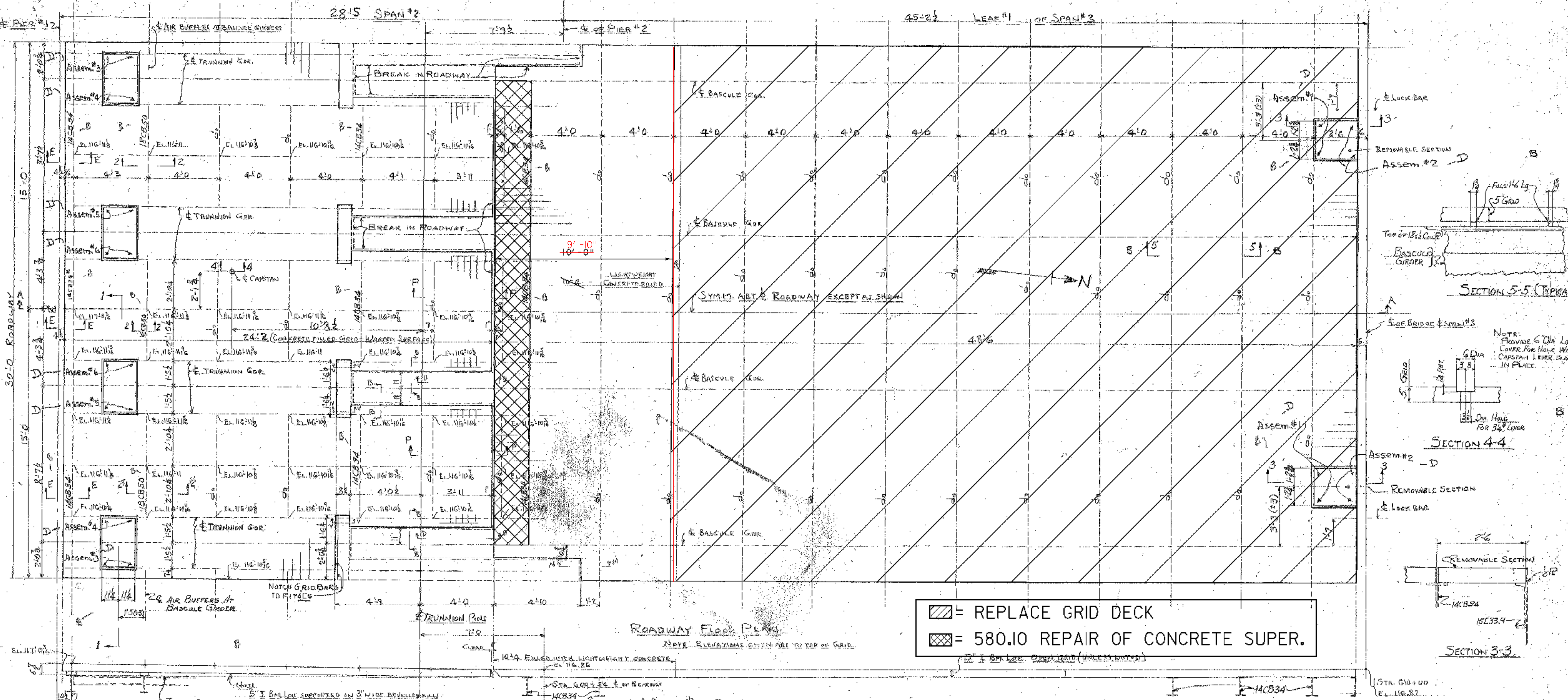


1/2" X 30" X 5" STEEL PLATE ADDED TO PROTECT SAWCUT CONCRETE



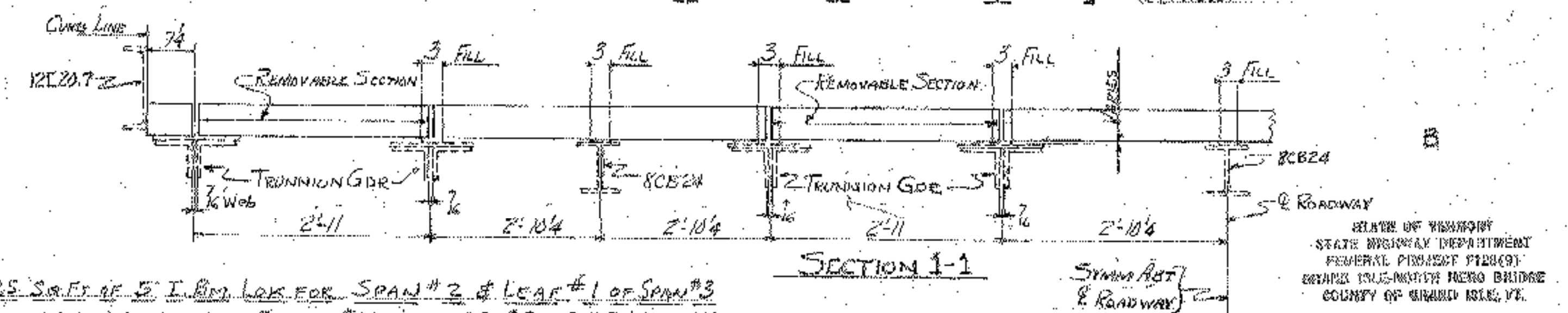
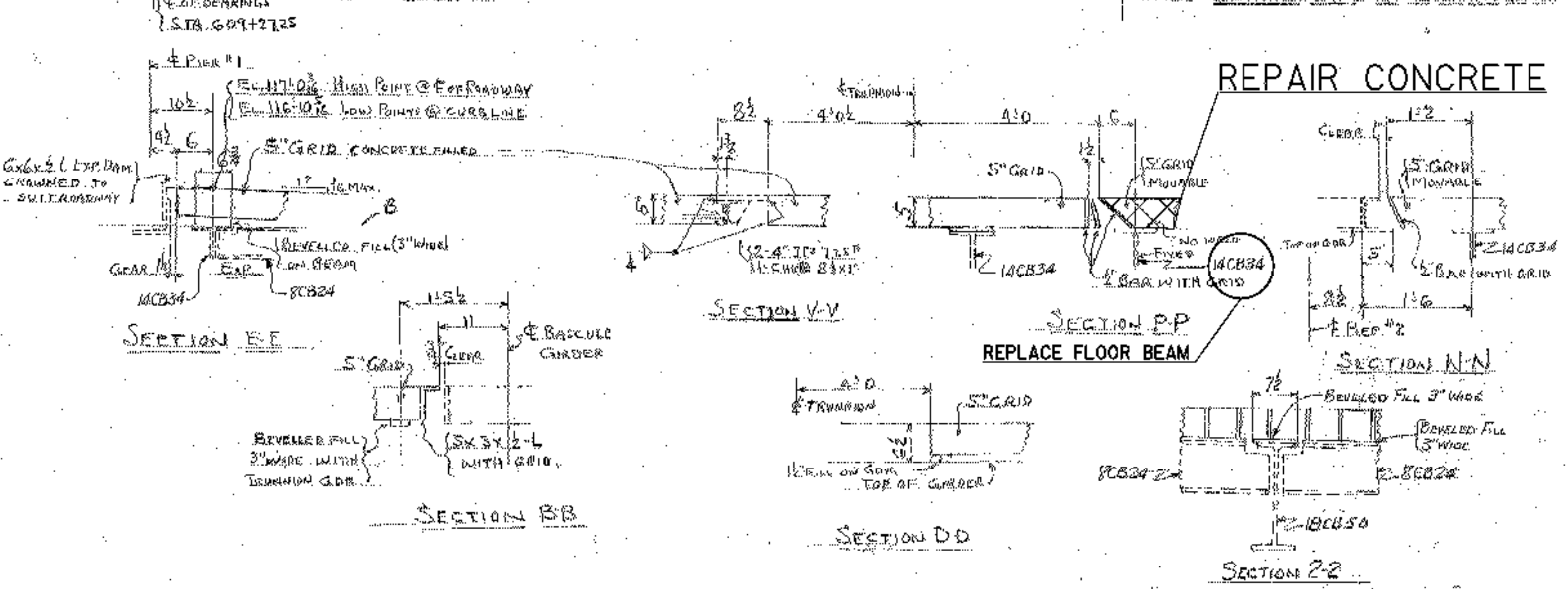
Legend box with symbols:
 [Hatched] = REPLACE GRID DECK
 [Cross-hatched] = 580.10 REPAIR OF CONCRETE SUPER.
 (2" I BEAM LOK OPEN FLOOR (UNLESS NOTED))

NOTES:
 ABOUT 21RS SURF OF E.I. B.M. LOK FOR SPAN #2 & LEAF #1 OF SPAN #3
 ROADWAY FLOOR GRID AS SHOWN ON DESIGNS #17-20-21-22-23-25-28-29-31-32
 (NOTED ON PAGE 305 FROM 406 OF STD. SPEC. OF STATE OF VERMONT
 DEPT. OF HIGHWAYS.
 ORDERED ON PAGE #101 REG 57597
 SHIP DIRECT TO SITE
 SUPPLIER TO FURNISH 6 SETS OF DETAIL DRAWINGS FOR APPROVAL
 & ADDITIONAL PRINTS AS REQUESTED FOR FILE
 FURNISH TRACINGS FOR CUSTOMER'S PERMANENT FILE
 REMOVABLE SECTIONS TO BE DETAIL IN PLACE WITH 2" BRONZE BOLTS WITH LOCKWASHERS AND N.T. NUTS
 NOT TO BE WELDED TO SUPPORTS AS SHOWN. NUTS TO BE IN PLACE ABOVE TOP OF GRID
 OPEN STEEL GRID FLOORING - MAIN MEMBERS TRANSVERSE TO TRAFFIC TRAVELING SPAN
 AND PARALLEL TO TRAFFIC-BASCULE SPAN. MINIMUM MOMENT OF INERTIA 4.5 IN⁴ FOR 4" HIGH
 WIDTH. EACH MAIN MEMBER TO BE WELDED TO SUPPORT WITH 1/2" FILLET WELLS BOTH SIDES.
 IT SHALL BE EQUIVALENT TO USS-1 BEAM LOK OPEN FLOOR AS TO DESIGN DETAIL OF BRACING.

SOUTH HALF ROADWAY GRID

PROJECT NAME: NORTH HERO-GRANDE ISLE
 PROJECT NUMBER: BHF 028-(K21)

FILE NAME: structure\92b284\cleandsoc
 PROJECT LEADER: M. EVANS-MONGEON
 DESIGNED BY: S. SCRIBNER
 PLOT DATE: 18-OCT-2007
 DRAWN BY: L. DUQUETTE
 CHECKED BY: S. SCRIBNER
 SHEET 19 OF 41



STATE OF VERMONT
 STATE HIGHWAY DEPARTMENT
 FEDERAL PROJECT #12801
 GRANDES ISLES-NORTH HERO BRIDGE
 COUNTY OF GRANDE ISLE, VT.