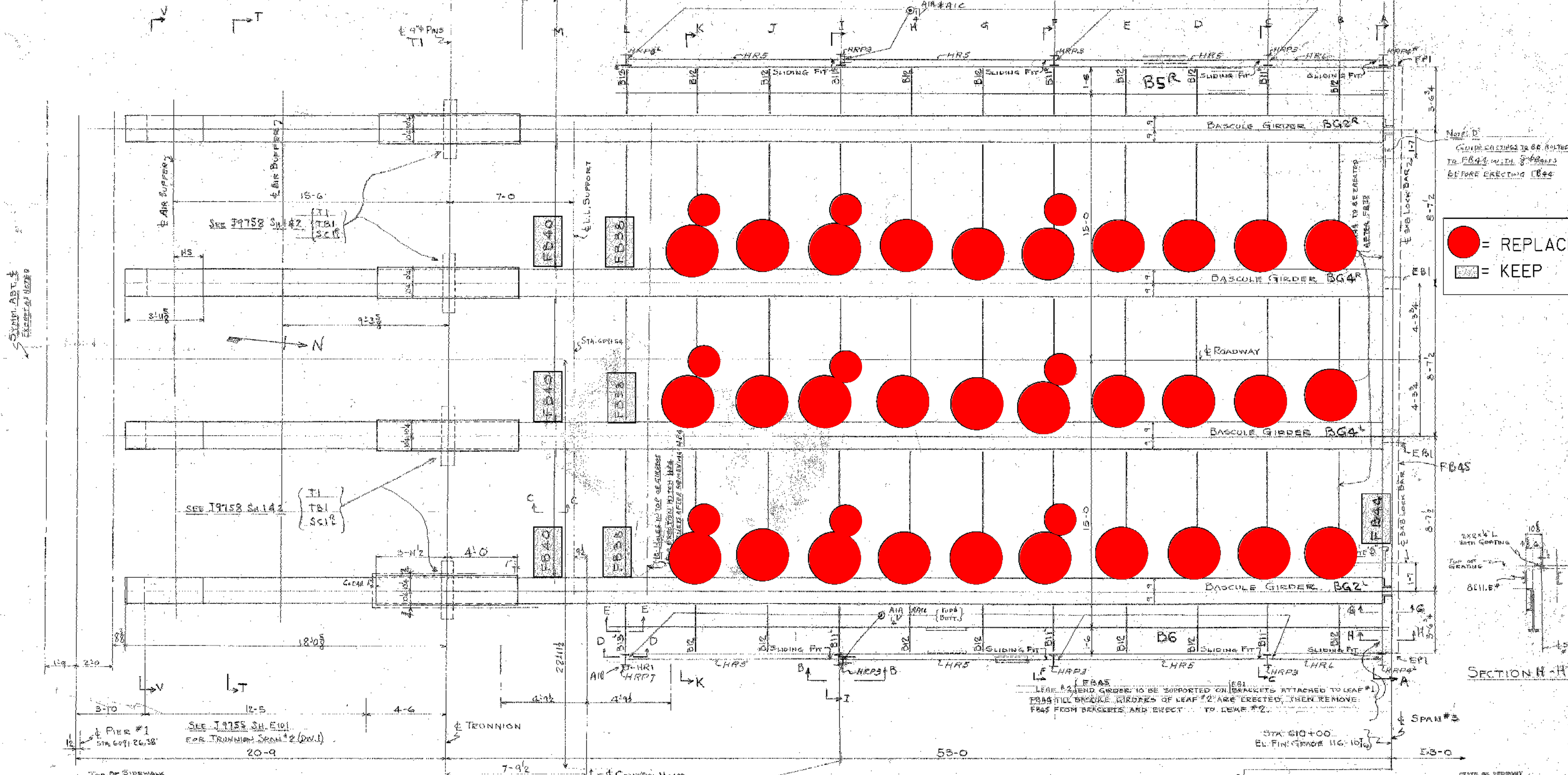


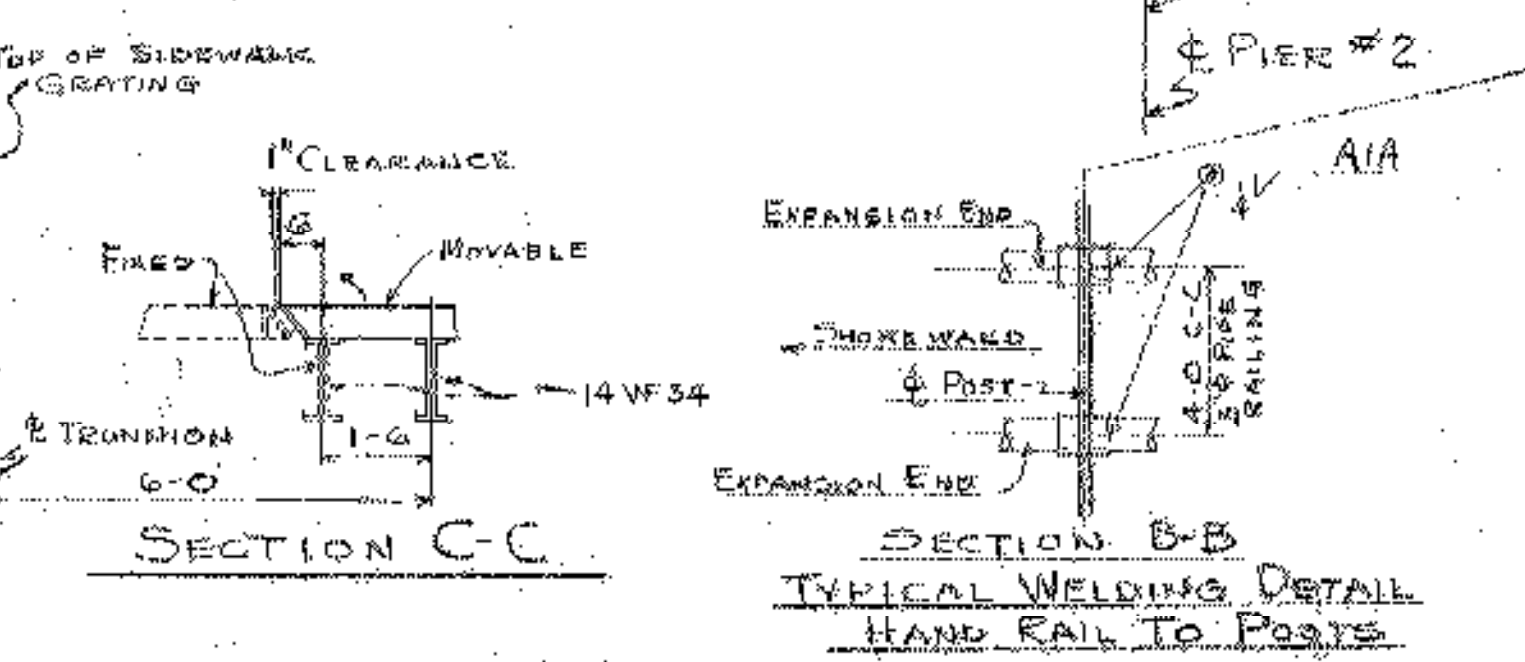
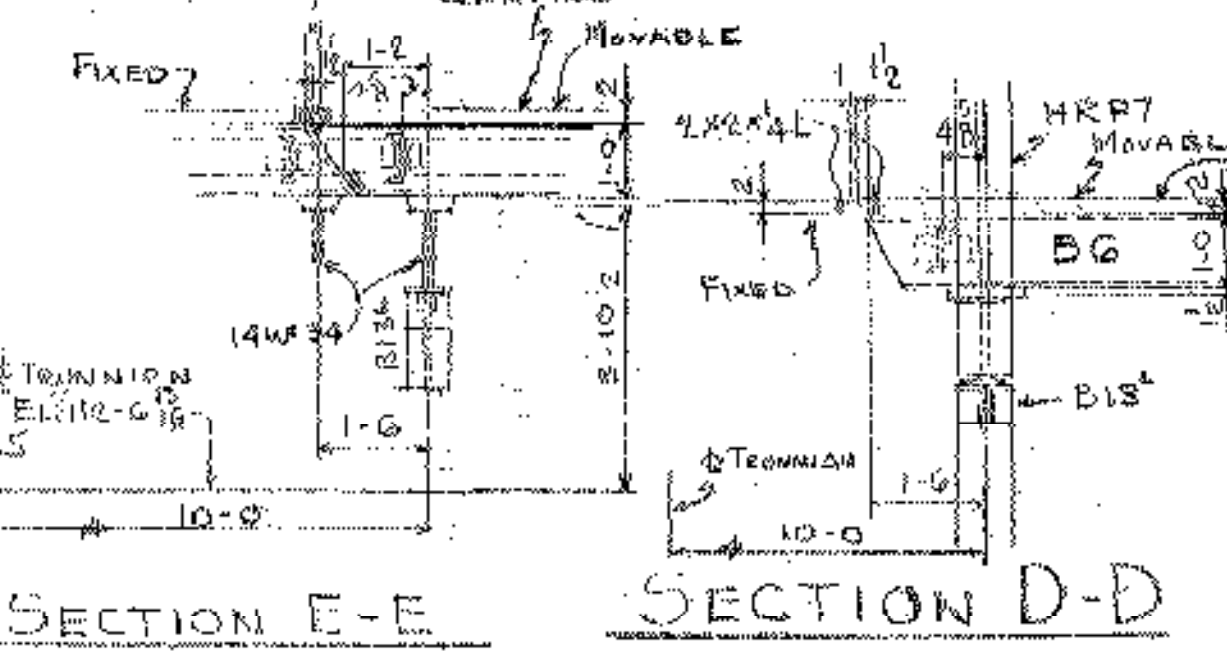
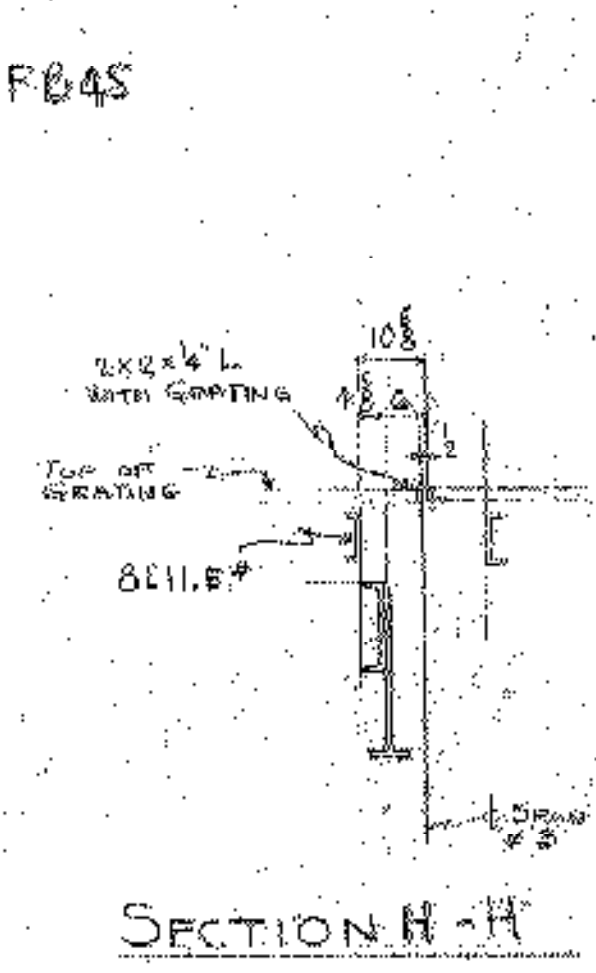
49-0 OPEN GRID FLOOR (EXCEPT OVER PIERS & LOCK PLATFORMS) GRID DEPTH B'



NOTE: D
 CONCRETE CASTINGS TO BE BOLTED TO FB44 WITH 3/4" BOLTS BEFORE ERECTING CB44

● = REPLACE
 □ = KEEP

SYMBOLS ARE TO EXCEPT UNLESS NOTED



ALL NEW CONNECTIONS PAINTED WITH COLD APPLIED GALVANIZE PAINT

FLOOR PLAN OF BASCULE LEAF #1 SPAN #3 (DIV. 1)

SEE SH. E103 FOR SECTIONS A-A, G-G, F-F, I-I, K-K, T-T & V-V

MARK SHOWN ON PANS THAT (AREA) INDICATE THE SHEET SHEET ON WHICH THE TYPE OF CONNECTION & BRIG WELDING ARE SHOWN

STATE OF VERMONT
 STATE HIGHWAY DEPARTMENT
 FEDERAL PROJECT #28(3)
 GRAND ISLE-NORTH HERO BRIDGE
 COUNTY OF GRAND ISLE, VT.

AMERICAN BRIDGE COMPANY

FLOOR PLAN OF BASCULE LEAF #1

PROJECT NAME: NORTH HERO-GRANDE ISLE
 PROJECT NUMBER: BHF 028-(K21)

FILE NAME: structure\92b284cleandsoa
 PROJECT LEADER: M. EVANS-MONGEON
 DESIGNED BY: S. SCRIBNER

PLOT DATE: 18-OCT-2007
 DRAWN BY: L. DUQUETTE
 CHECKED BY: S. SCRIBNER

SHEET 9 OF 41