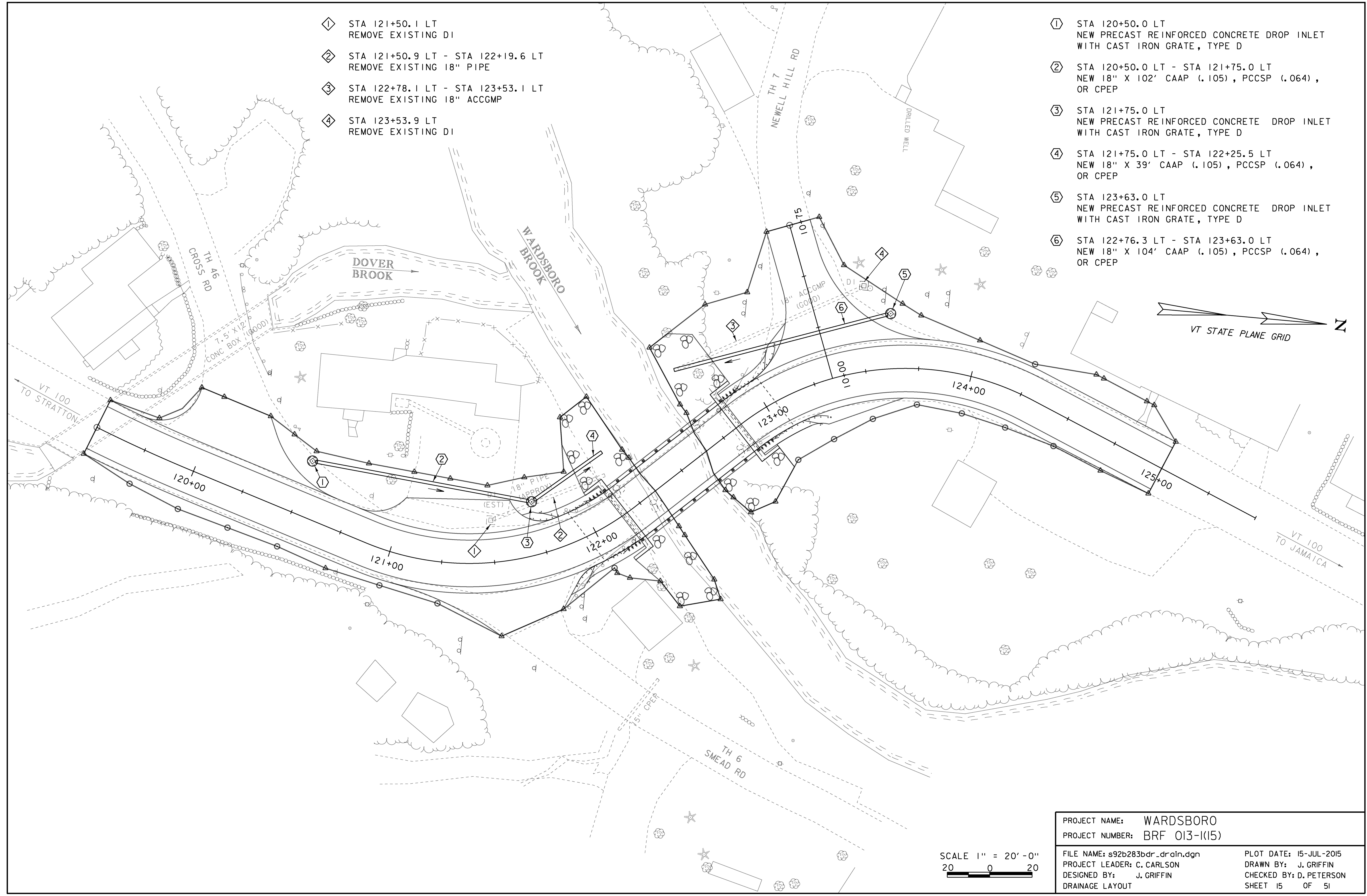


- ① STA 121+50.1 LT
REMOVE EXISTING DI
- ② STA 121+50.9 LT - STA 122+19.6 LT
REMOVE EXISTING 18" PIPE
- ③ STA 122+78.1 LT - STA 123+53.1 LT
REMOVE EXISTING 18" ACCGMP
- ④ STA 123+53.9 LT
REMOVE EXISTING DI

- ① STA 120+50.0 LT
NEW PRECAST REINFORCED CONCRETE DROP INLET
WITH CAST IRON GRATE, TYPE D
- ② STA 120+50.0 LT - STA 121+75.0 LT
NEW 18" X 102' CAAP (.105), PCCSP (.064),
OR CPEP
- ③ STA 121+75.0 LT
NEW PRECAST REINFORCED CONCRETE DROP INLET
WITH CAST IRON GRATE, TYPE D
- ④ STA 121+75.0 LT - STA 122+25.5 LT
NEW 18" X 39' CAAP (.105), PCCSP (.064),
OR CPEP
- ⑤ STA 123+63.0 LT
NEW PRECAST REINFORCED CONCRETE DROP INLET
WITH CAST IRON GRATE, TYPE D
- ⑥ STA 122+76.3 LT - STA 123+63.0 LT
NEW 18" X 104' CAAP (.105), PCCSP (.064),
OR CPEP



PROJECT NAME:	WARDSBORO	PLOT DATE:	15-JUL-2015
PROJECT NUMBER:	BRF 013-I(15)	DRAWN BY:	J. GRIFFIN
FILE NAME:	s92b283bdr_drain.dgn	CHECKED BY:	D. PETERSON
PROJECT LEADER:	C. CARLSON	DRAINAGE LAYOUT:	SHEET 15 OF 51
DESIGNED BY:	J. GRIFFIN		

SCALE 1" = 20'-0"
 20 0 20