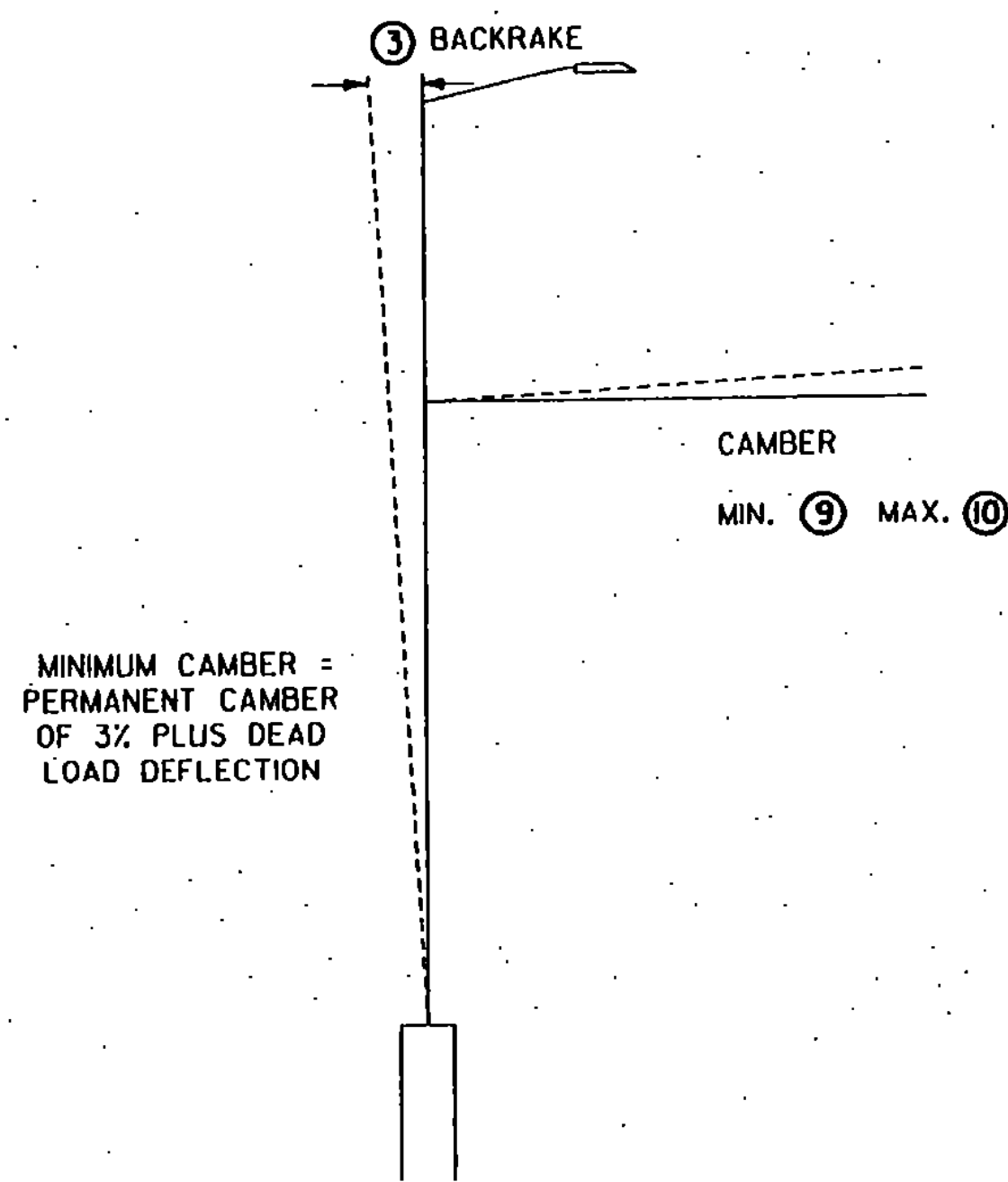
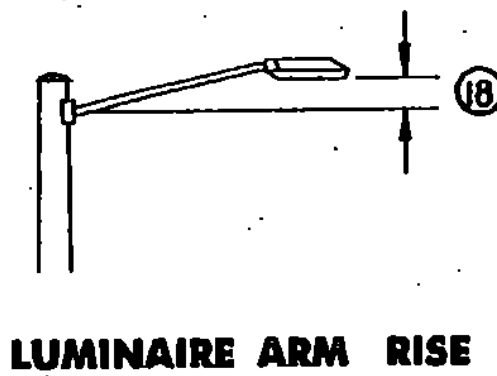
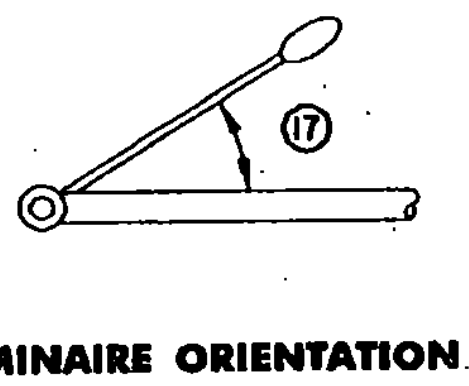


- POLE BASE DIAMETER (4)
- POLE GAUGE (5)
- POLE TAPER RATE (6)
- ARM DIAMETER (11)
- ARM GAUGE (12)
- ARM TAPER RATE (13)

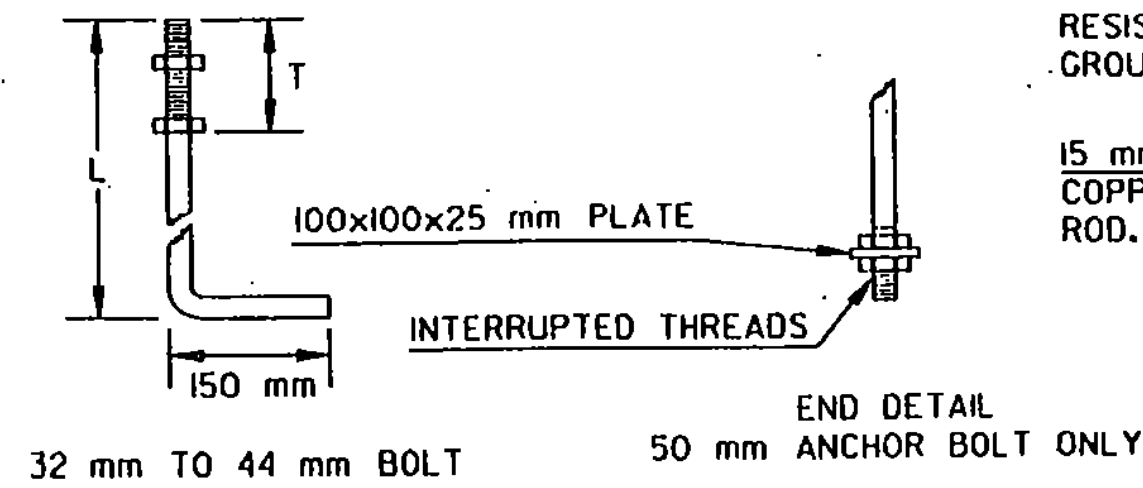


CAMBER AND BACKRAKE DATA

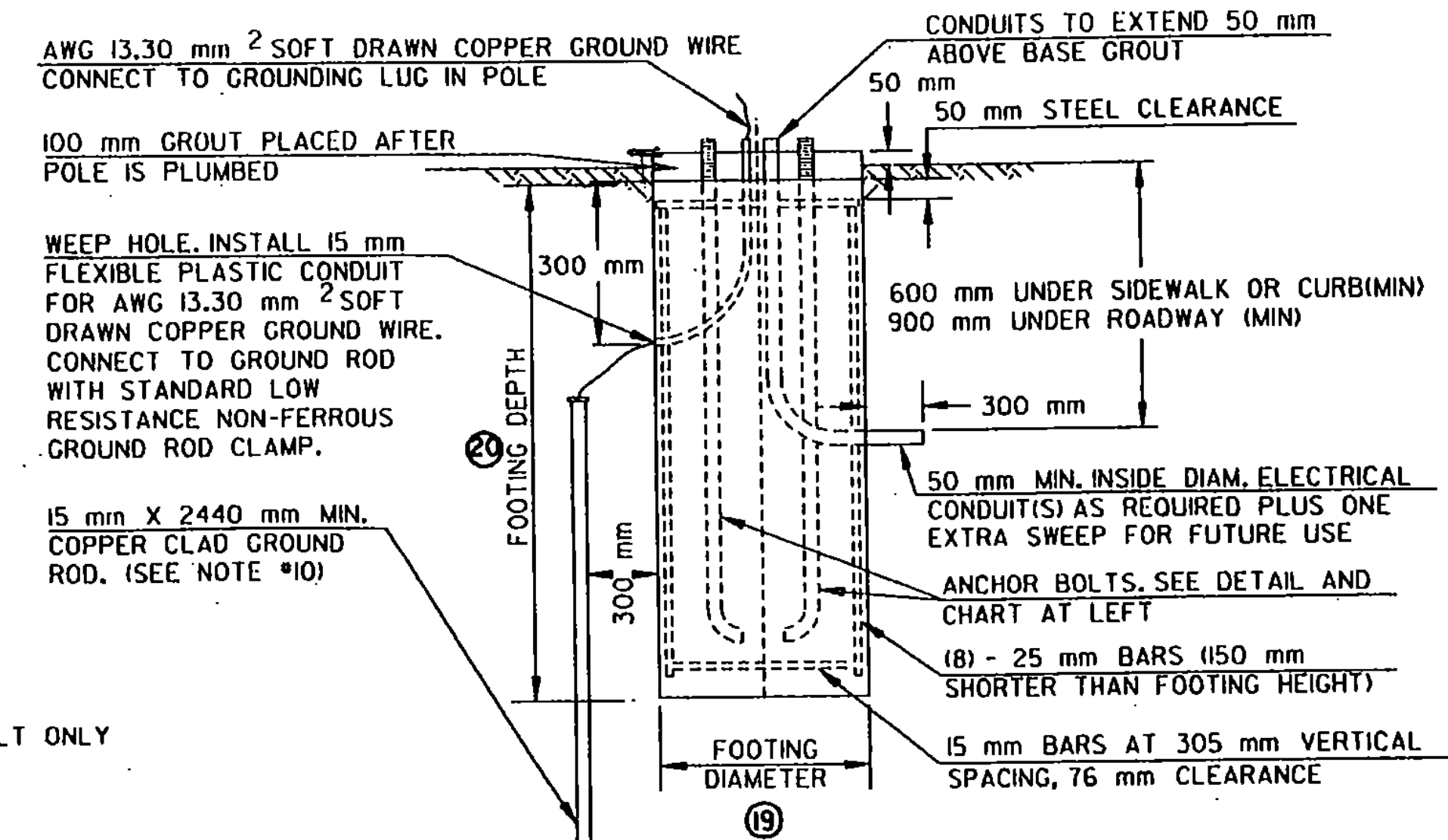
SEE SHEET 37 FOR CROSS SECTIONS



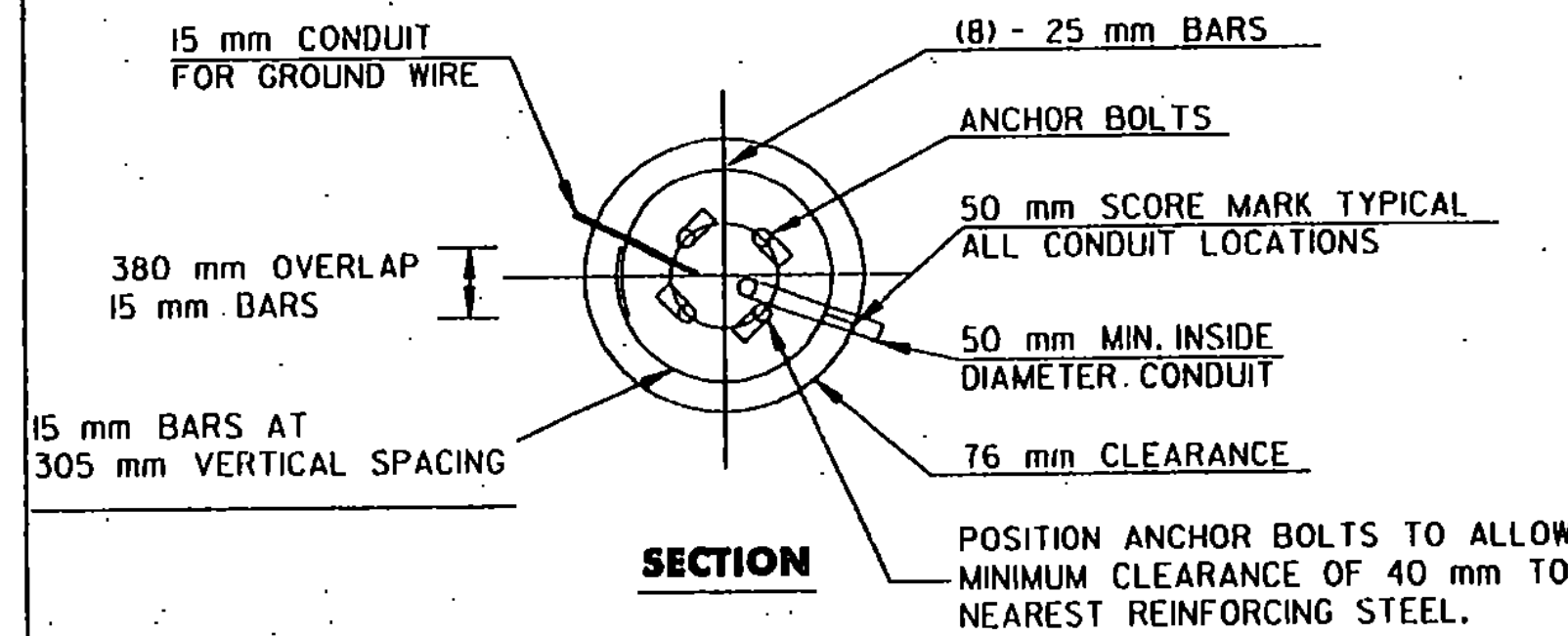
ANCHOR BOLT DETAIL		
SIZE (mm)	L (mm)	T (mm)
32 X 1219	1067	203
38 X 1524	1372	229
44 X 2286	2134	229
50 X 2438	2438	229



ANCHOR BOLT DETAIL



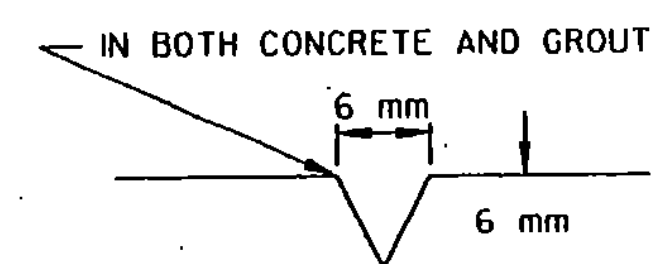
ELEVATION



SECTION

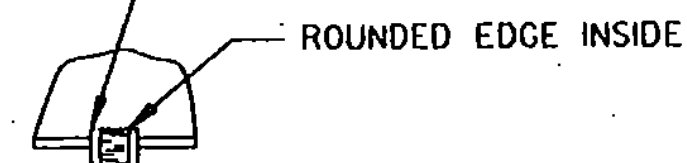
CANTILEVER FOOTING DETAIL

(SPREAD FOOTINGS OR PILES ARE OPTIONAL)

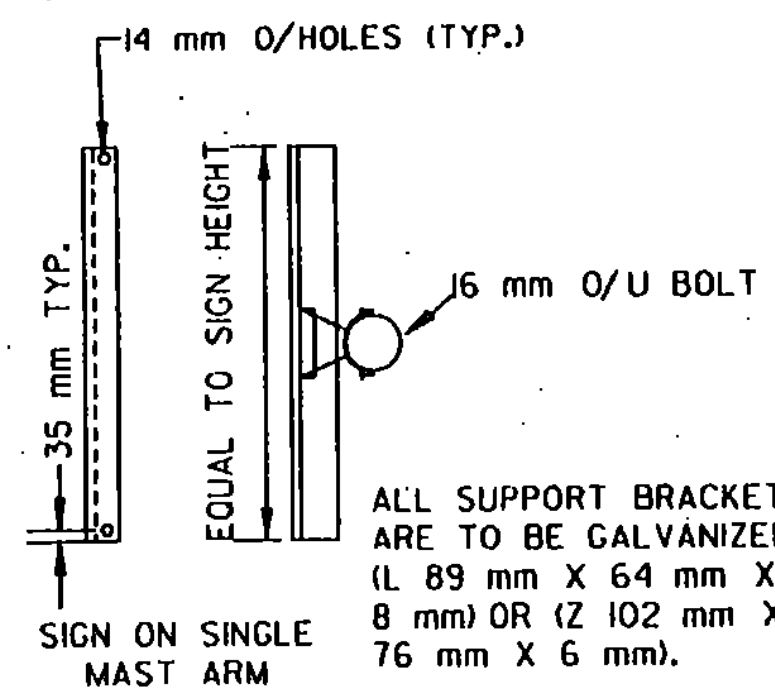


USED FOR CONDUIT LOCATION, SEE AT RIGHT 'SECTION' DETAIL.  
50 mm SCORE MARK DETAIL

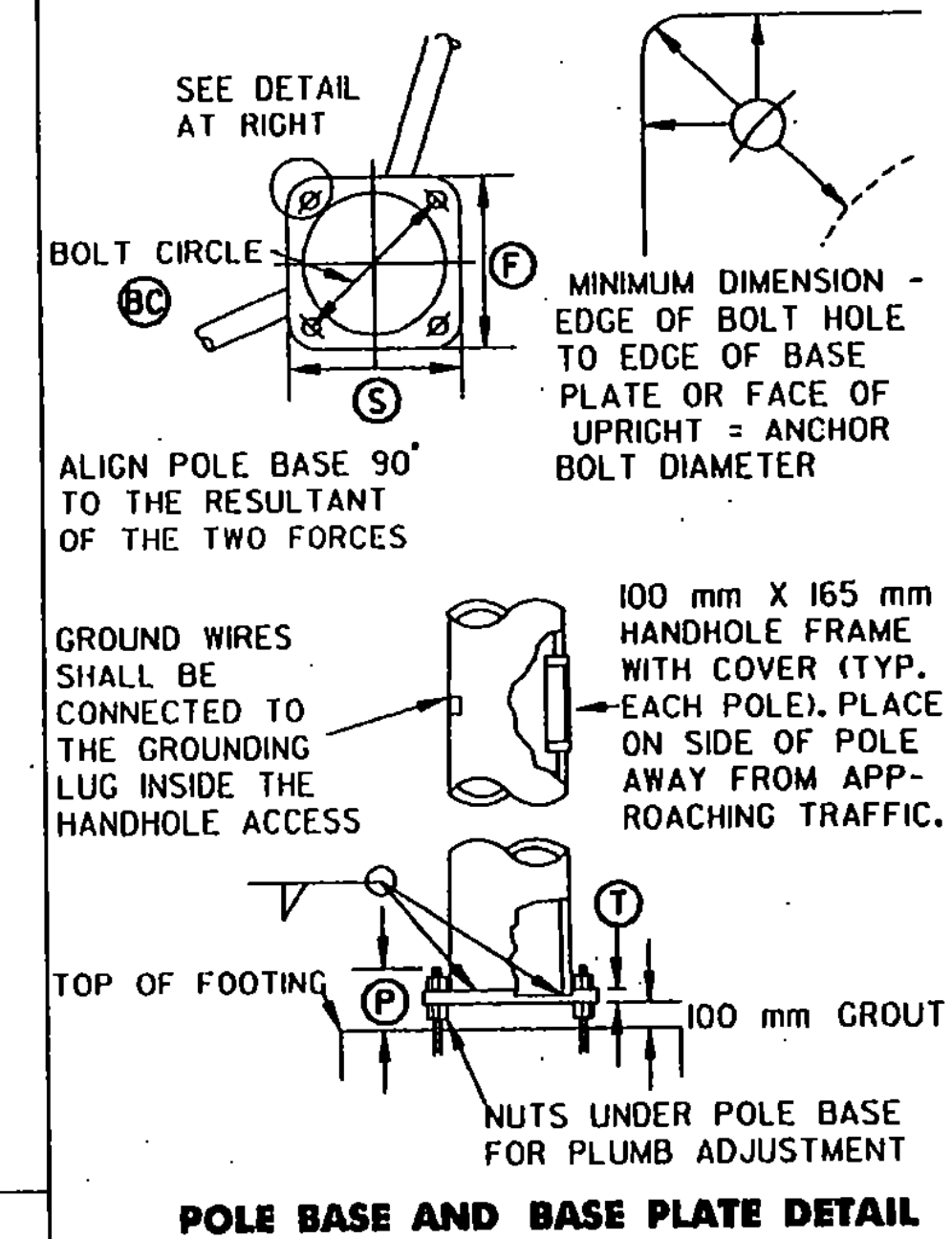
32 mm BLIND HALF COUPLING WIRE OUTLETS (TYP.)



DETAIL A



SIGN BRACKET DETAILS



POLE BASE AND BASE PLATE DETAIL

NOT TO SCALE

POLE #	POLE DATA						ARM DATA						LIGHTING DATA						FOOTING DATA						BASE PLATE/BOLT DATA					
	(1)	(2)	(3)	(4)	(5)	(6)	(7)	(8)	(9)	(10)	(11)	(12)	(13)	(14)	(15)	(16)	(17)	(18)	(19)	(20)	(BC)	(F)	(S)	(T)	(P)	ANCHOR BOLT SIZE				
1																														
2																														
3																														
4																														

\* ALL DIMENSIONS SHALL BE IN METRIC UNITS

DIMENSIONS TO BE FILLED IN BY CONTRACTOR AS PART OF SHOP DRAWING SUBMITTAL SEE NOTES 15 & 16 ON SHEET 40.

MAST ARM DESIGN  
CANTILEVER  
FOOTING

PROJECT NAME: ESSEX  
PROJECT NUMBER: STP 030-1(17)S

PLOT FILE NAME: zstp030-1(17)srfr6.dgn  
L&D PROJECT NUMBER: 00-074  
DESIGNED BY: LAMOUREUX & DICKINSON  
CONSULTING ENGINEERS, INC. SHEET 39 OF 42

**Metric**