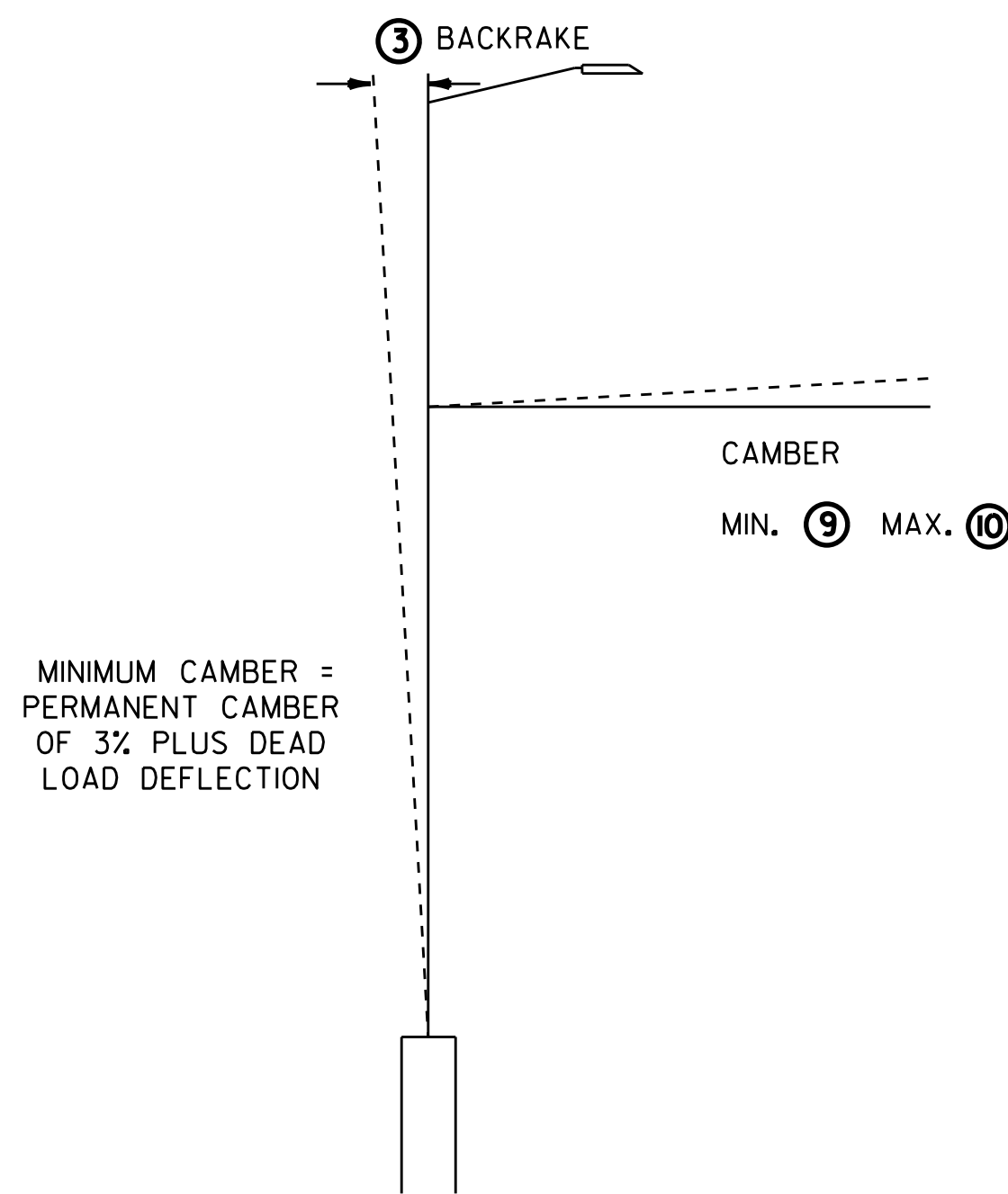


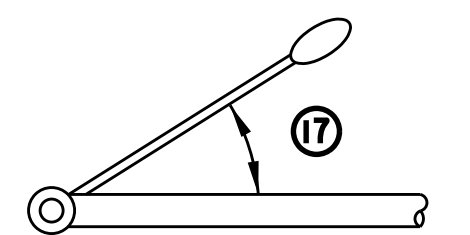
- POLE BASE DIAMETER ④
- POLE GAUGE ⑤
- POLE TAPER RATE ⑥
- ARM DIAMETER ⑪
- ARM GAUGE ⑫
- ARM TAPER RATE ⑬

VERTICAL CLEARANCE
MIN.=5.0 m, MAX.=5.8 m

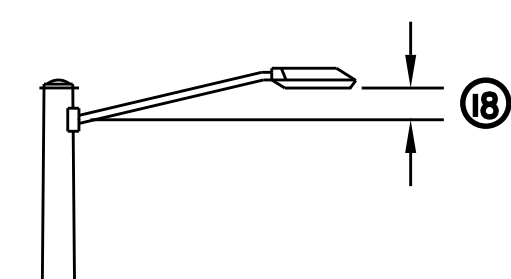


CAMBER AND BACKRAKE DATA

SEE SHEET 37 FOR CROSS SECTIONS

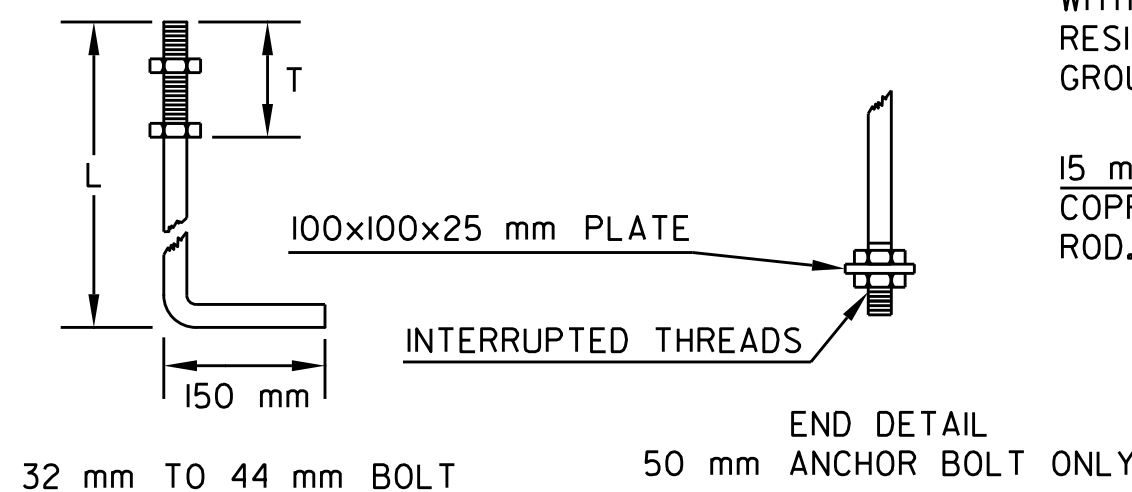


LUMINAIRE ORIENTATION

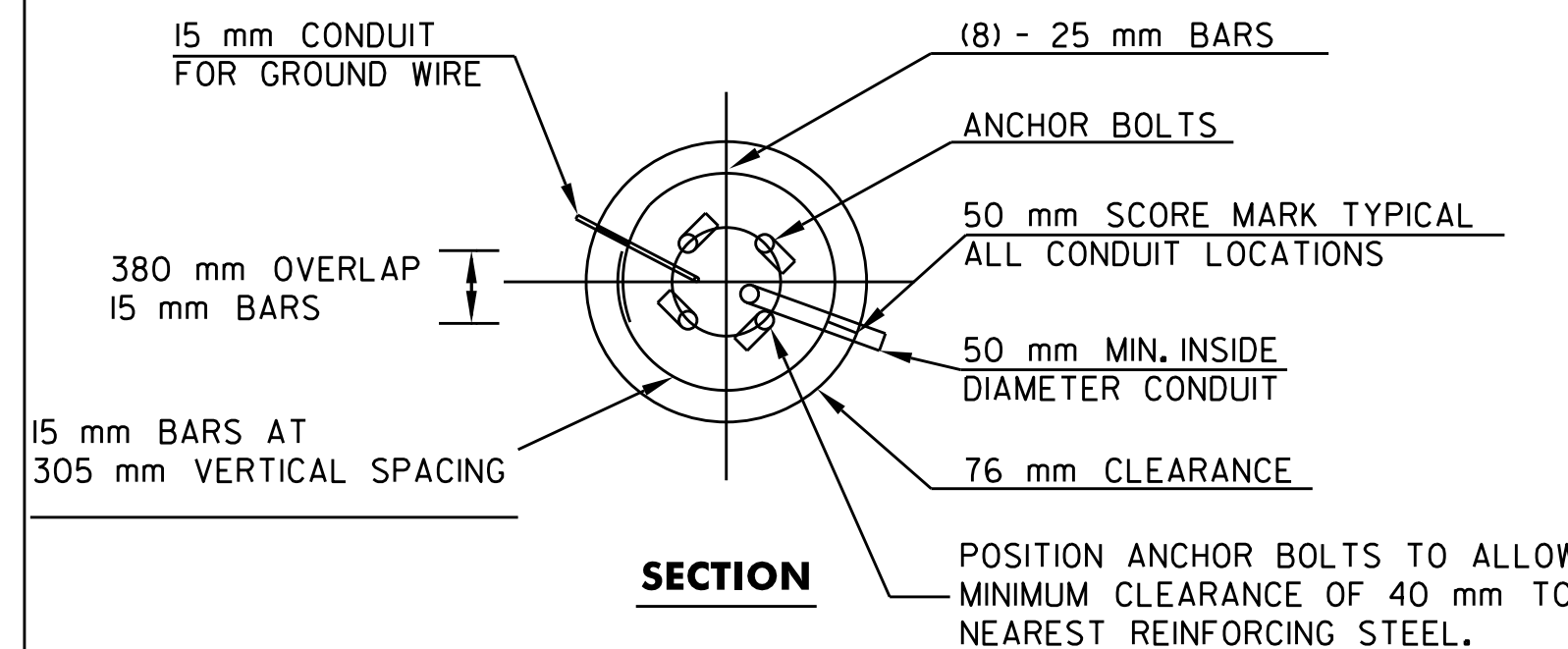


LUMINAIRE ARM RISE

ANCHOR BOLT DETAIL		
SIZE (mm)	L (mm)	T (mm)
32 x 1219	1067	203
38 x 1524	1372	229
44 x 2286	2134	229
50 x 2438	2438	229

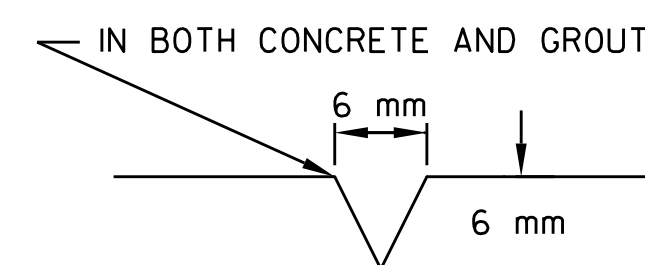


ANCHOR BOLT DETAIL

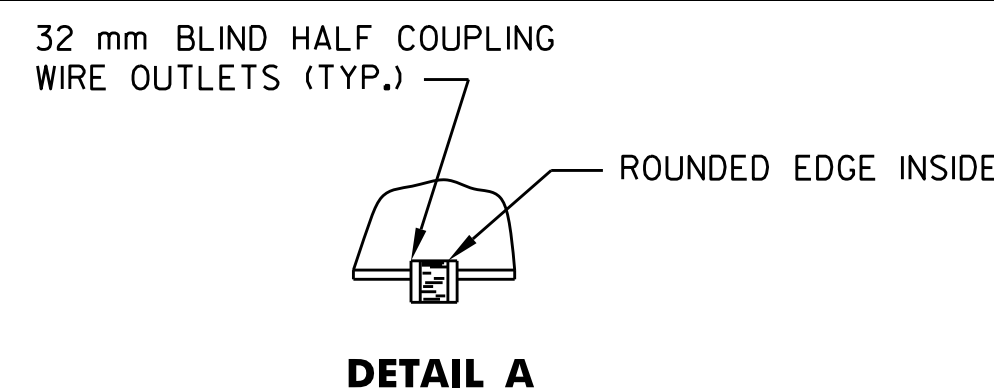


CANTILEVER FOOTING DETAIL

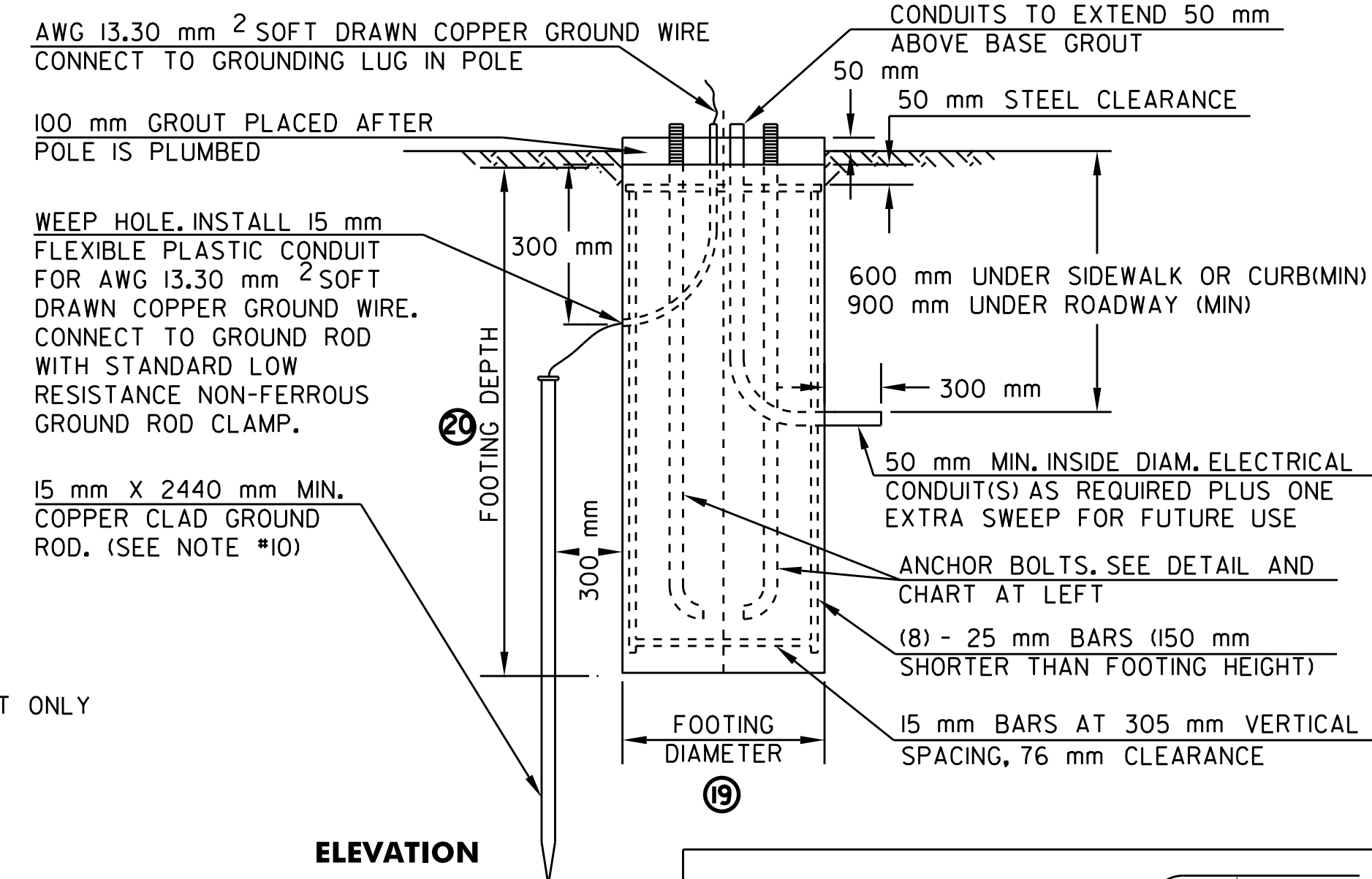
(SPREAD FOOTINGS OR PILES ARE OPTIONAL)



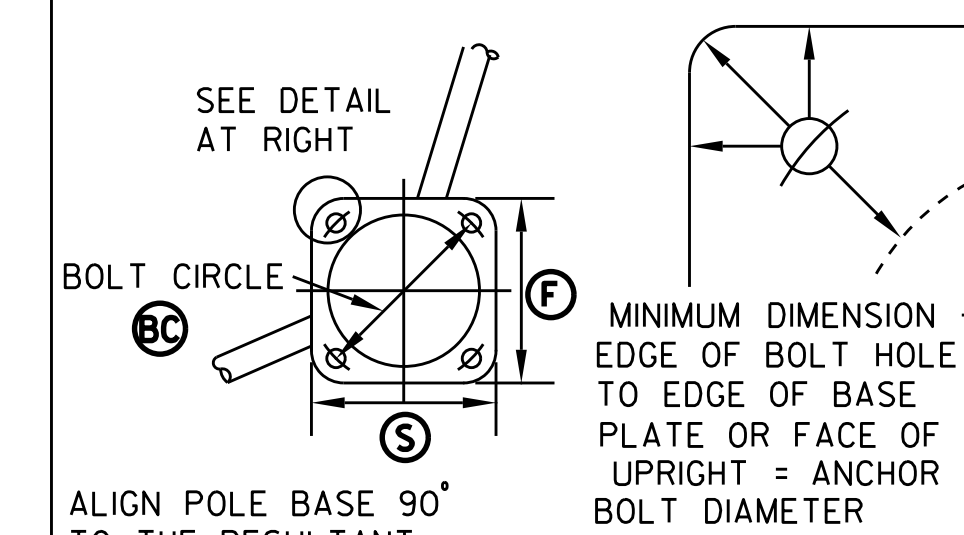
50 mm SCORE MARK DETAIL



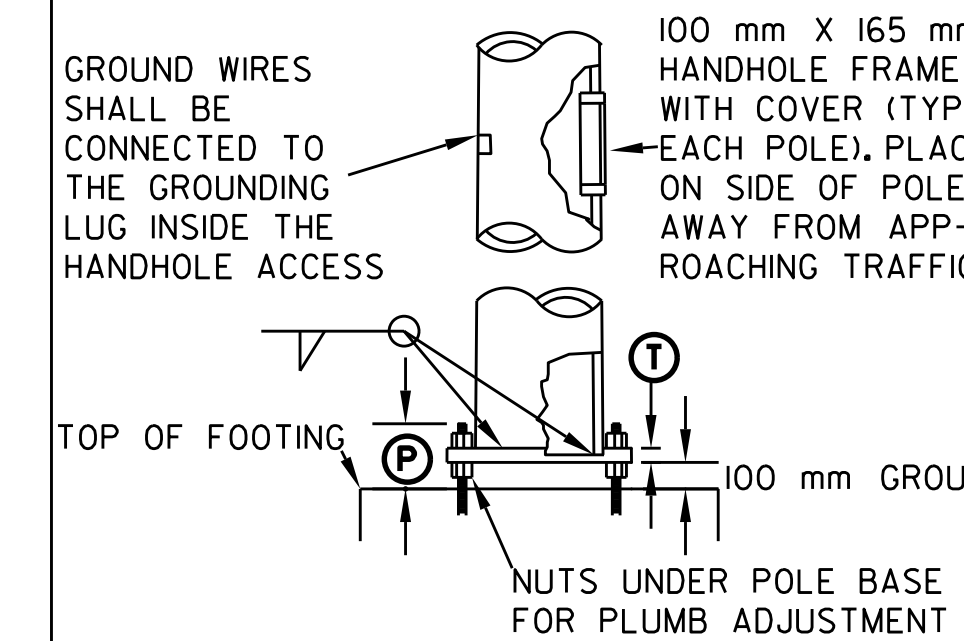
DETAIL A



ELEVATION

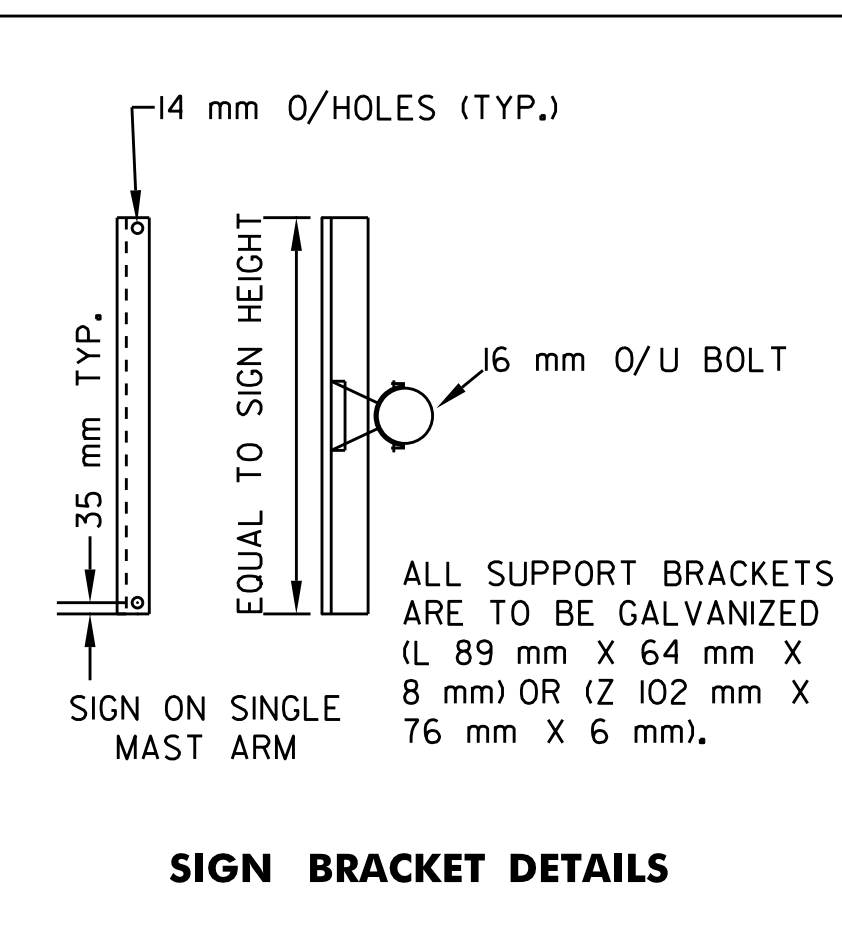


ALIGN POLE BASE 90° TO THE RESULTANT OF THE TWO FORCES



POLE BASE AND BASE PLATE DETAIL

NOT TO SCALE



SIGN BRACKET DETAILS

STRUCTURE DIMENSIONS																										
POLE #	POLE DATA						ARM DATA						LIGHTING DATA						FOOTING DATA		BASE PLATE/BOLT DATA					
	①	②	③	④	⑤	⑥	⑦	⑧	⑨	⑩	⑪	⑫	⑬	⑭	⑮	⑯	⑰	⑱	⑲	⑳	BC	F	S	T	P	ANCHOR BOLT SIZE
1																										
2																										
3																										
4																										

* ALL DIMENSIONS SHALL BE IN METRIC UNITS

DIMENSIONS TO BE FILLED IN BY CONTRACTOR AS PART OF SHOP DRAWING SUBMITTAL SEE NOTES 15 & 16 ON SHEET 40



MAST ARM DESIGN CANTILEVER FOOTING	PROJECT NAME: ESSEX
	PROJECT NUMBER: STP 030-1(17)S
	PLOT FILE NAME: zstp030-1(17)sfrm6.dgn L&D PROJECT NUMBER: 00-074 DESIGNED BY: LAMOUREUX & DICKINSON CONSULTING ENGINEERS, INC.
	DRAWN BY: PLC CHECKED BY: RJD SHEET 30