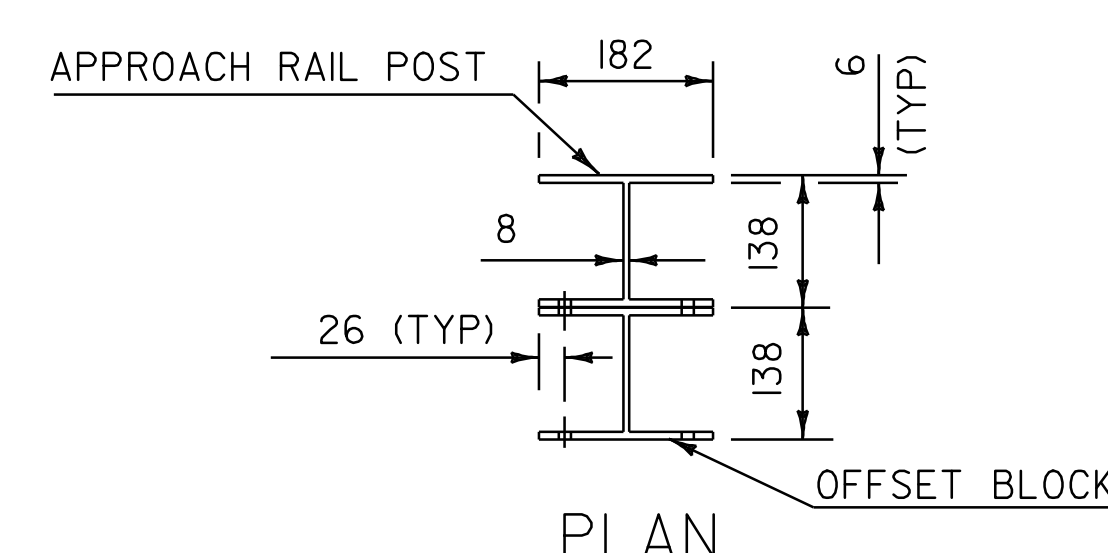


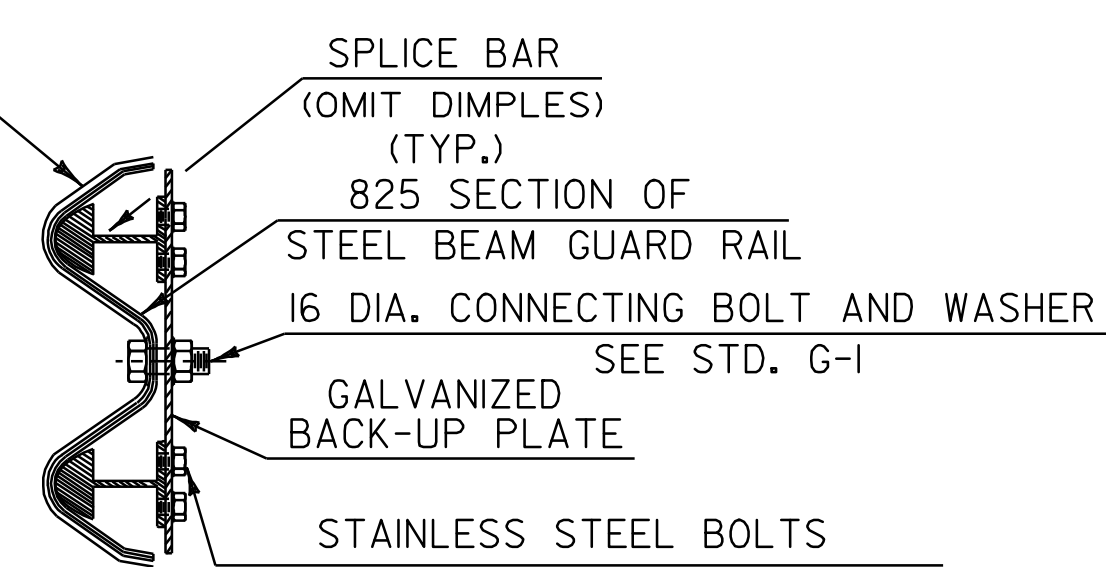
**PLAN**  
 ESSEX, STA. 11+874.5 TO 11+882.0, LT.  
 ESSEX, STA. 11+874.5 TO 11+882.0, RT.  
 ESSEX, STA. 11+912.0 TO 11+919.5, RT.



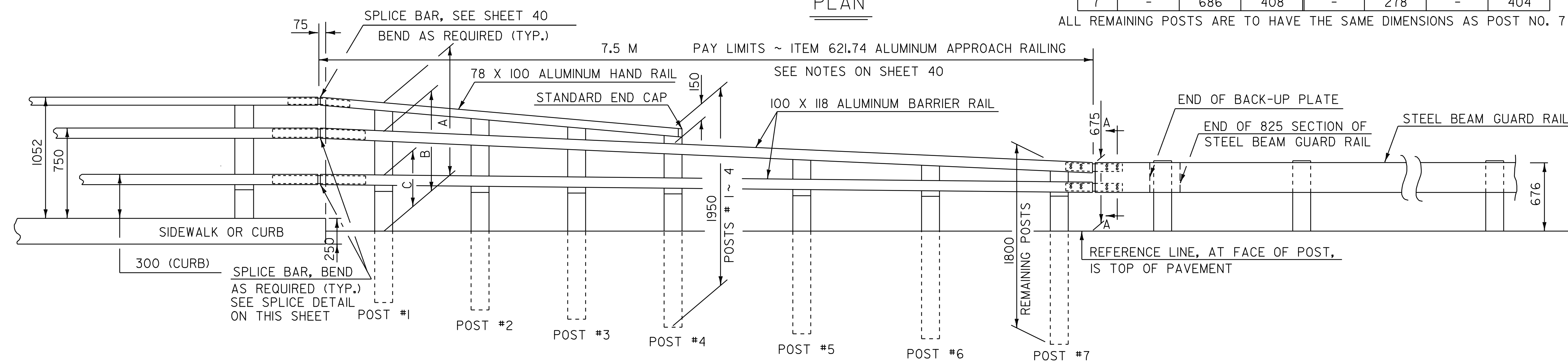
ALUMINUM APPROACH RAIL  
 RAIL DIMENSIONS FOR A CURB CONDITION

POST NO.	RAIL HEIGHT DIMENSIONS			OFFSET BLOCK DIMENSIONS			
	A	B	C	D	E	F	G
1	1226	950	516	276	434	824	-
2	1146	912	500	234	412	760	-
3	1066	874	484	192	390	696	-
4	986	836	468	150	368	632	-
5	-	786	448	-	338	-	464
6	-	736	428	-	308	-	434
7	-	686	408	-	278	-	404

ALL REMAINING POSTS ARE TO HAVE THE SAME DIMENSIONS AS POST NO. 7



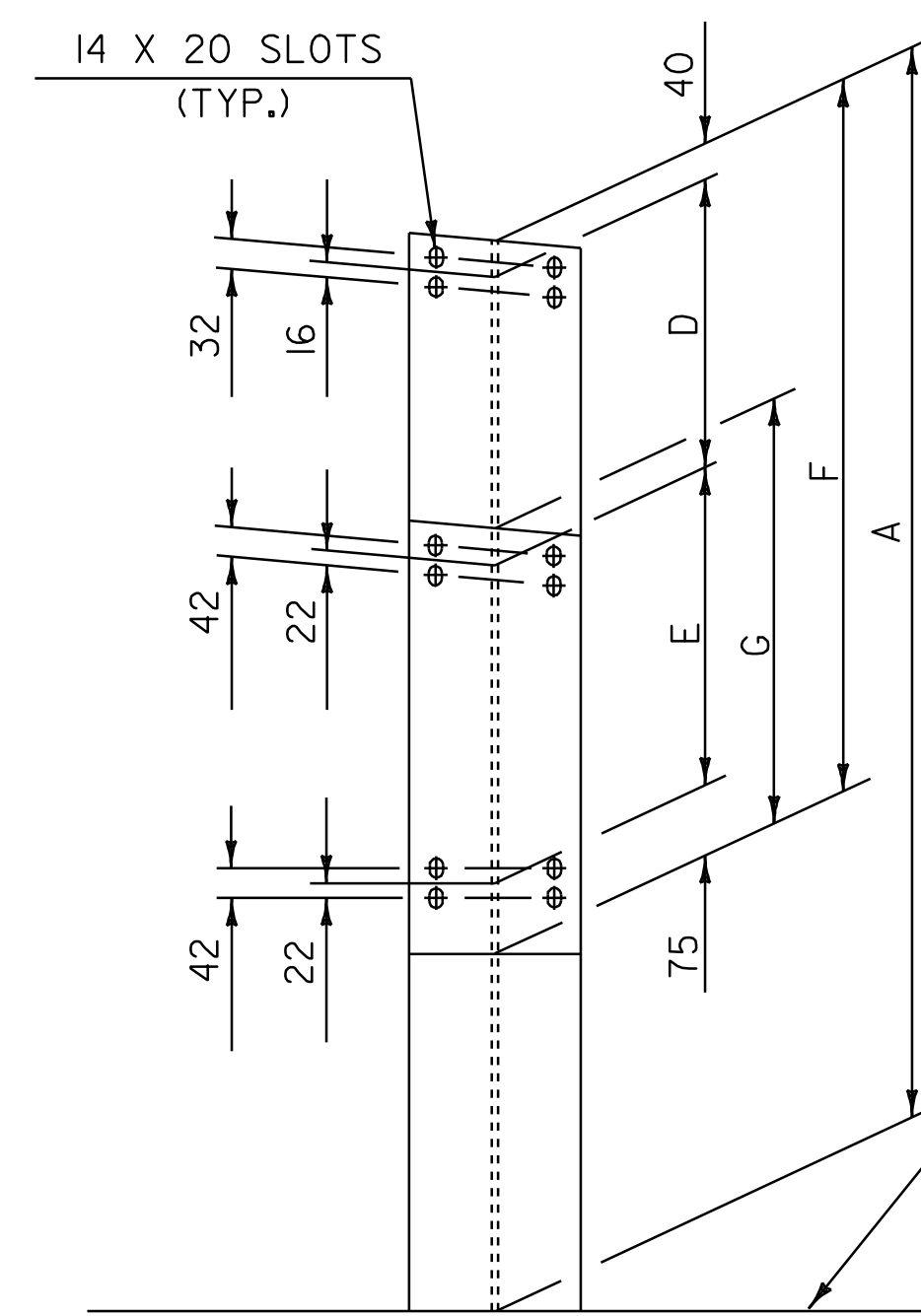
SECTION A-A



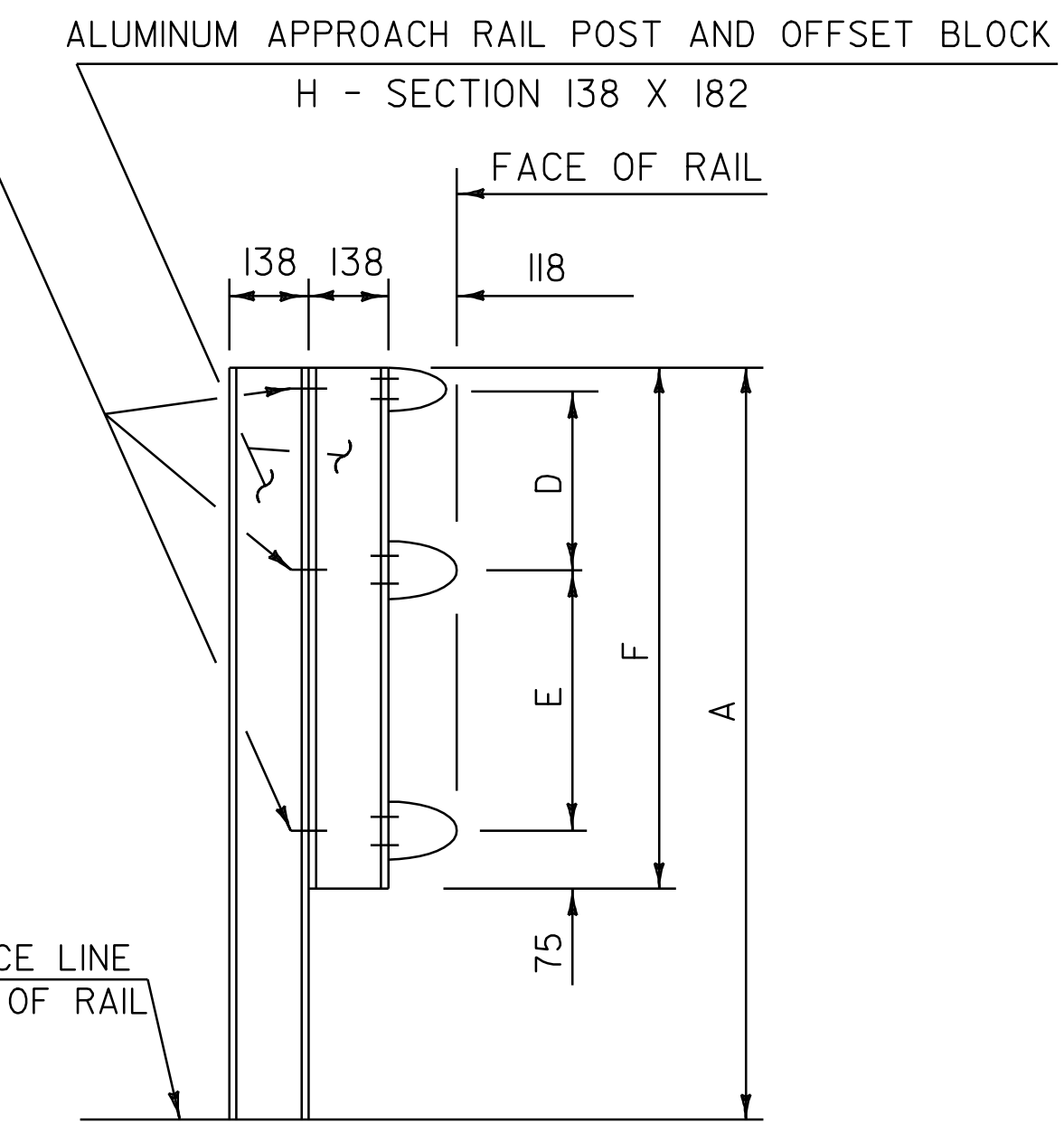
ELEVATION

**NOTES**

1. POSTS 1 THROUGH 7 SHALL BE EXTRUDED ALUMINUM.
2. ALL STRUCTURAL STEEL SHALL BE AASHTO M270 GRADE 36 GALVANIZED AFTER FABRICATION.
3. ALL ITEMS NOT OTHERWISE INDICATED SHALL MEET THE SPECIFICATION REQUIREMENTS OF THE STANDARD SHEETS ON WHICH THEY ARE DETAILED.
4. SEE STANDARD G-1 FOR STEEL BEAM GUARD RAIL DETAILS. SEE SHEET 40 OF 40 FOR ALUMINUM BRIDGE RAILING DETAILS.
5. THE COST OF ALL MATERIALS AND LABOR FOR THE SPLICE BETWEEN THE ALUMINUM APPROACH RAILING AND THE STEEL BEAM GUARD RAIL SHALL BE SUBSIDIARY TO ITEM 621.74, ALUMINUM APPROACH RAILING.
6. DETAILS ARE SHOWN FOR TRANSITION TO A 3 RAIL ALUMINUM BRIDGE RAILING.
7. DIMENSIONS SHOWN ARE FROM A REFERENCE LINE AT THE FACE OF POST FOR A NORMAL CROWNED SECTION. APPROPRIATE CORRECTIONS SHALL BE MADE FOR CROSS SLOPES OTHER THAN A NORMAL SECTION.

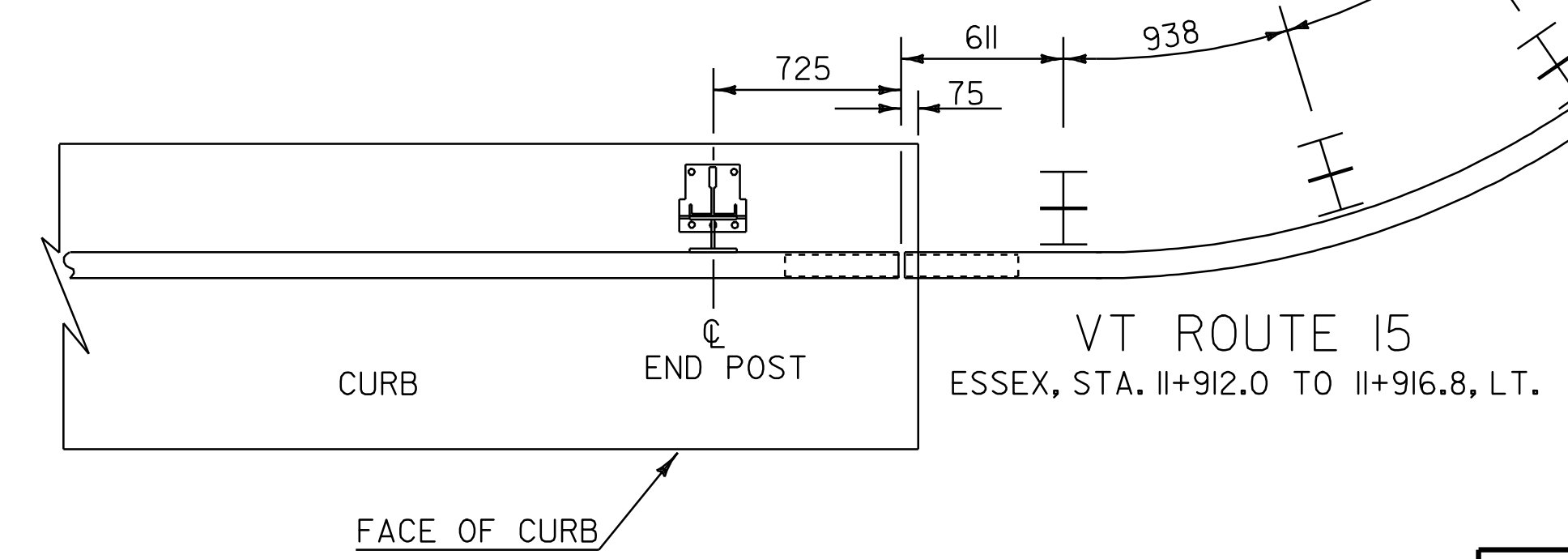


ATTACH OFFSET BLOCK TO POST WITH  
 12 -13 UNC X 38 LONG STAINLESS STEEL  
 HEX HEAD BOLTS, NUTS AND WASHERS.  
 6 BOLTS PER POST, POST 1 THRU 4;  
 4 BOLTS PER POST, POST 5 THRU 7.



FRONT ELEVATION      SIDE ELEVATION

APPROACH RAIL DETAILS



NOT TO SCALE

**ARCHIVED  
 IN DPR**

NOTE: ALL DIMENSIONS IN MILLIMETERS  
 EXCEPT WHERE OTHERWISE INDICATED

<b>BRIDGE          APPROACH          RAILING          DETAILS #1</b>	SURVEYED BY	N/A	DATE	N/A
	DESIGN BY	JLL/GAE	DATE	11/96
	DRAWN BY	W-M	DATE	11/96
	DESIGN FILE NO.	/pave/92b22l/pb22l.dgn	DATE	
	IPARM FILE	pb22ld+7.1	DATE	PLOTTED-SEP-2009 09:
	PROJ. NAME	ESSEX-UNDERHILL		
PROJ. NO.	STP 9469(1)S			
SHEET	39 OF 40 SHEETS			