

TEMPORARY AND DURABLE 100 mm YELLOW LINE
 STA. 0+900.0 TO I+600.0, SOLID LT. & RT.
 (WITH CENTERLINE BREAK FOR POKER HILL RD.)
 STA. 0+916.5, DOUBLE SOLID RT. (POKER HILL RD.)

TEMPORARY AND DURABLE 100 mm WHITE LINE
 STA. 0+900.0 TO I+600.0, SOLID LT. & RT.
 (WITH EDGELINE BREAK FOR POKER HILL RD.)

DURABLE 600 mm STOP BAR
 STA. 0+916.5, RT.

TEMPORARY AND DURABLE LETTER OR SYMBOL
 STA. 0+916.5, RT. - "STOP"

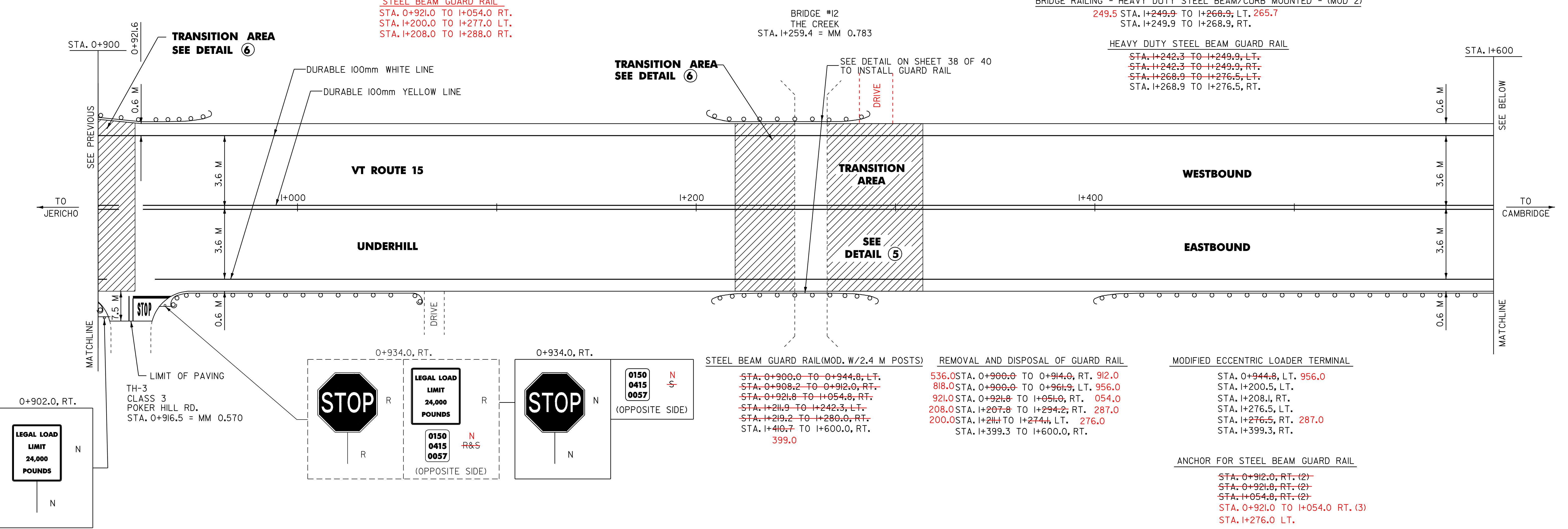
REMOVING SIGNS
 AS SHOWN - 3

ERECTING SALVAGED SIGNS
 AS SHOWN - 1

STEEL BEAM GUARD RAIL
 STA. 0+921.0 TO I+054.0 RT.
 STA. I+200.0 TO I+277.0 LT.
 STA. I+208.0 TO I+288.0 RT.

BRIDGE RAILING - HEAVY DUTY STEEL BEAM/CURB MOUNTED - (MOD 2)
 249.5 STA. I+249.9 TO I+268.9; LT. 265.7
 STA. I+249.9 TO I+268.9, RT.

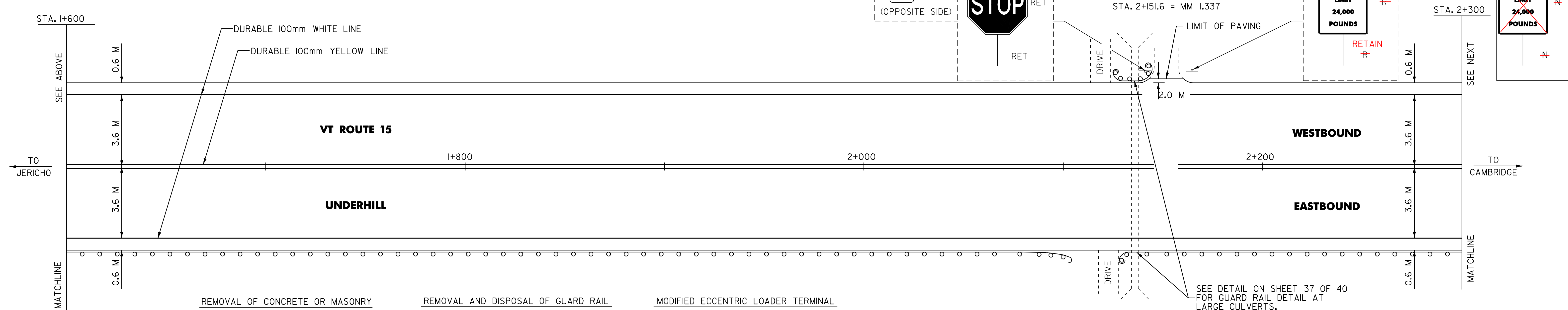
HEAVY DUTY STEEL BEAM GUARD RAIL
 STA. I+242.3 TO I+249.9, LT.
 STA. I+242.3 TO I+249.9, RT.
 STA. I+268.9 TO I+276.5, LT.
 STA. I+268.9 TO I+276.5, RT.



TEMPORARY AND DURABLE 100 mm YELLOW LINE
 STA. I+600.0 TO 2+300.0, SOLID LT. & RT.
 (WITH CENTERLINE BREAK FOR TOWN HIGHWAY)

TEMPORARY AND DURABLE 100 mm WHITE LINE
 STA. I+600.0 TO 2+300.0, SOLID LT. & RT.
 (WITH EDGELINE BREAK FOR TOWN HIGHWAY)

REMOVING SIGNS
 AS SHOWN - 1



**ARCHIVED
IN DPR**

NOTE: ALL DIMENSIONS IN MILLIMETERS EXCEPT WHERE OTHERWISE INDICATED

DATUM	
VERTICAL	N/A
HORIZONTAL	N/A

PAVING PROJECT LAYOUT #14	SURVEYED BY	W-M	DATE	12/95
	DESIGN BY	JLL/GAE	DATE	11/96
	DRAWN BY	W-M	DATE	11/96
	DESIGN FILE NO.	/pave/92b221/pb221.dgn		
	IPARM FILE	pb221i4.i	DATE	PLOTTED-SEP-2009 09
PROJ. NAME	ESSEX-UNDERHILL			
PROJ. NO.	STP 9469(1)S			
SHEET	23 OF 40 SHEETS			

NOTES: 1) FOR ANY TOWN HIGHWAY OR STREET DETAILS, SEE VAOT STANDARD E-193.
 2) ALL EXISTING SIGNS NOT SHOWN SHALL BE RETAINED AS DIRECTED BY THE RESIDENT ENGINEER.