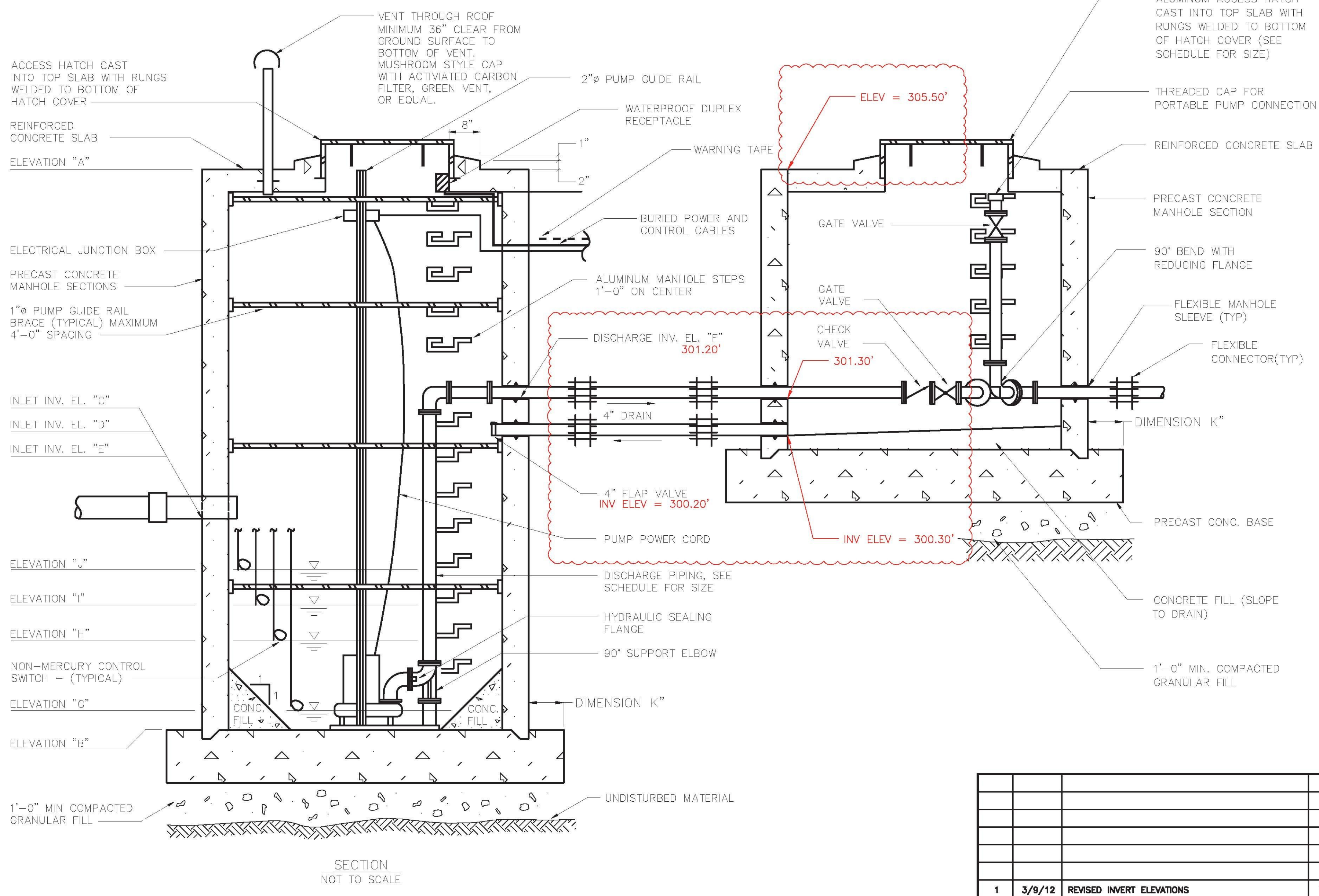
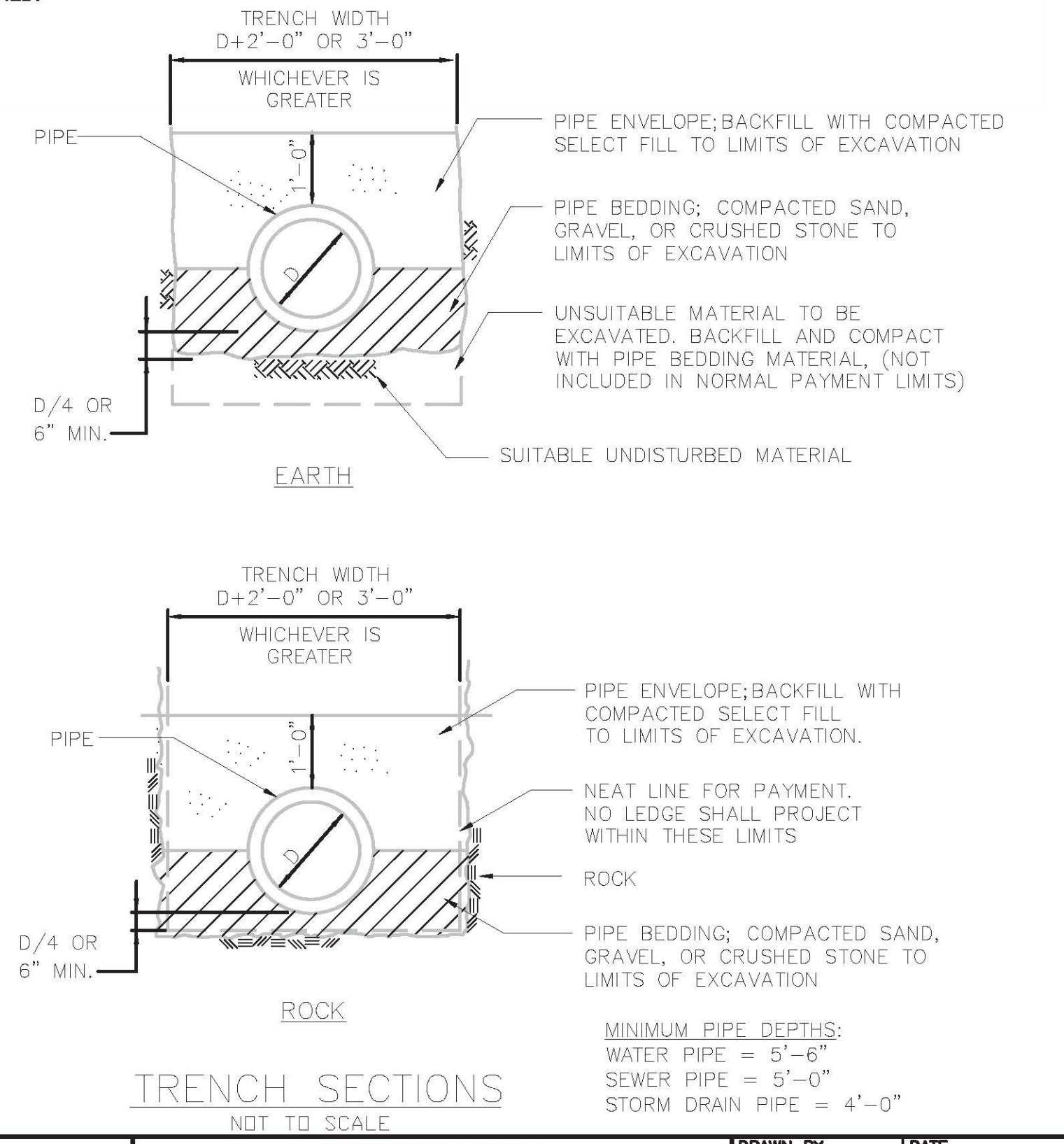


- NOTES**
- ALL JOINTS IN PRECAST SECTIONS TO BE SEALED WITH FLEXIBLE MASTIC JOINT COMPOUND CONFORMING TO FED. SPEC. S-SS-00210. STRUCTURAL SHALL BE WATERTIGHT TO THE TOP OF CONCRETE
 - PRECAST REINFORCED CONCRETE SECTIONS SHALL BE IN ACCORDANCE WITH ASTM C-478 CONCRETE STRENGTH (f_c) (TYPE II CEMENT): 5000 PSI AT 28 DAYS AND H-20 LOAD RATED.
 - REINFORCING STEEL SHALL BE GRADE 60.
 - PIPE CONNECTIONS SHALL BE BOOTED. USE NON-SHRINK GROUT AROUND PIPE OPENINGS.
 - USE 1000 GALLON PRECAST SEPTIC TANK MANUFACTURED BY, CAMP PRECAST CONCRETE PRODUCTS, OR APPROVED EQUAL.
 - FOR TANK LOCATIONS SEE SITE PLAN.
 - MANHOLE FRAME AND COVER TO BE NEENAH R-1743 OR APPROVED EQUAL. COVER SHALL BE UNMARKED.



DUPLIX PUMP STATION SCHEDULE	
PUMP STATION LOCATION	RICHMOND VERMONT
PUMP STATION DIAMETER (INSIDE)	6'
VALVE PIT DIAMETER (INSIDE)	5'
PUMP STATION ACCESS HATCH SIZE	30" X 48"
VALVE PIT ACCESS HATCH SIZE	30" CLEAR (MIN)
TOP OF SLAB EL. "A"	305.25
BOTTOM OF WET WELL EL. "B"	298.37
SIZE & INVERT INLET EL. "C"	4", 301.0
SIZE & INVERT INLET EL. "D"	UNUSED
SIZE & INVERT INLET EL. "E"	UNUSED
SIZE & INVERT OUTLET EL. "F"	2", 301.20
LEAD/LAG PUMPS OFF EL. "G"	298.75
LEAD PUMP ON EL. "H"	299.50
LAG PUMP ON EL. "I"	300.00
ALARM ON EL. "J"	300.10
PORTABLE PUMP CONNECTION SIZE	2"
VENT DIAMETER	4"
BALLAST RING WIDTH, DIMENSION "K"	9"



NO.	DATE	REVISED INVERT ELEVATIONS	BY	CK'D
1	3/9/12	REVISED INVERT ELEVATIONS	LJH	LJH
		REVISIONS		

DuBois & King
engineering planning management development

CONANT FARM SEPTIC SYSTEM REPLACEMENT RICHMOND, VERMONT
16 KENYON ROAD DETAILS

DRAWN BY LAW	DATE 5-24-2010
CHECKED BY	PROJ. NO. 420716
PROJ. ENG. LJH	DRAW. NO.
SHEET 3 OF 3	