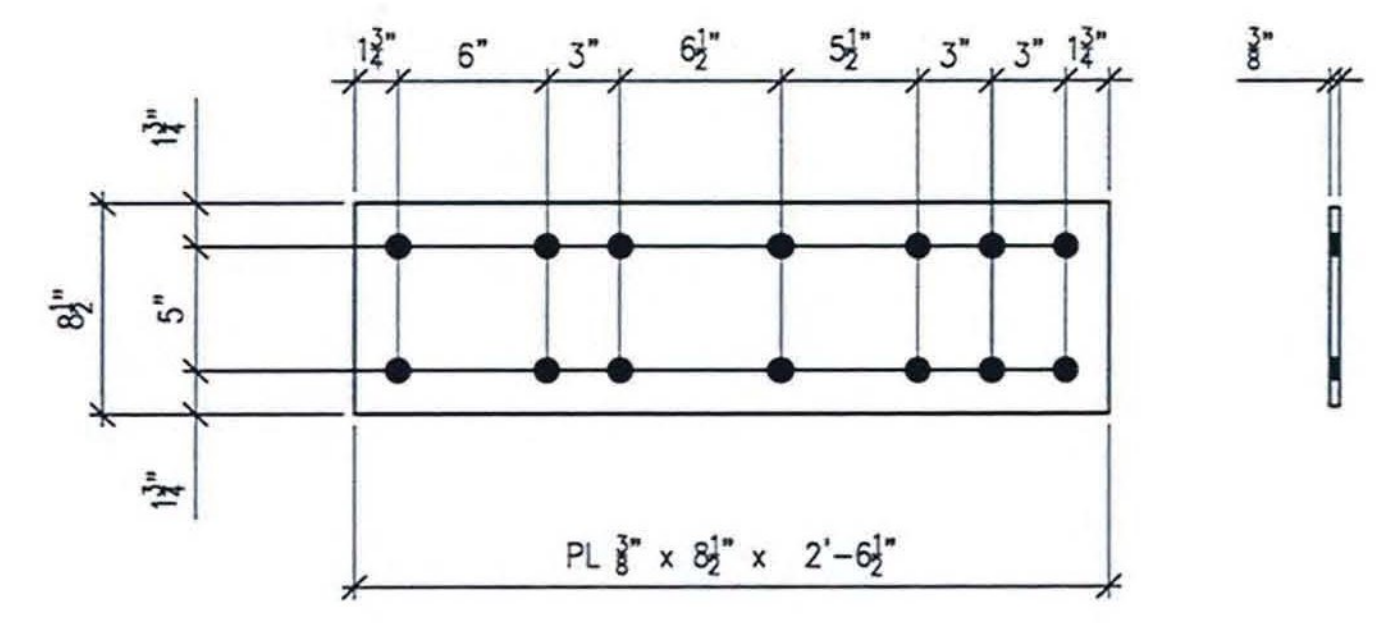


SHOP NOTE  
 2 REQ'D ~ Mk. x91a  
**MATERIAL A709-50 T2**



6 REQ'D ~ Mk. x91b  
**MATERIAL A709-50 T2**

- NO EXCEPTION TAKEN
- REJECTED
- MAKE CORRECTIONS NOTED
- REVISE AND RESUBMIT
- SUBMIT SPECIFIED ITEM

CHECKING IS ONLY FOR GENERAL CONFORMANCE WITH THE DESIGN CONCEPT OF THE PROJECT AND GENERAL COMPLIANCE WITH THE INFORMATION GIVEN IN THE CONTRACT DOCUMENTS. ANY ACTION SHOWN IS SUBJECT TO THE REQUIREMENTS OF THE PLANS AND SPECIFICATIONS. CONTRACTOR IS RESPONSIBLE FOR DIMENSIONS WHICH SHALL BE CONFIRMED AND CORRELATED AT THE JOB SITE; FABRICATION PROCESSES AND TECHNIQUES OF CONSTRUCTION; COORDINATION OF HIS WORK WITH THAT OF ALL OTHER TRADES AND THE SATISFACTORY PERFORMANCE OF THE WORK.

DATE 5/9/12 BY CHA/PKL/d

- LEGEND:**
- ⊖ = CENTERLINE
  - CTR'D = CENTERED
  - C/C = CENTER TO CENTER
  - FLG = FLANGE
  - TOP = TOP
  - BTM = BOTTOM
  - RDFH = RUNNING DIMENSIONS FROM HERE
  - /— = FIELD BOLTS (QUANTITY) DIAMETER x LENGTH
  - ◇ = ALTERNATE HOLE DIAMETER
  - TYP = TYPICAL
  - N/S = NEAR SIDE
  - F/S = FAR SIDE
  - B/S = BOTH SIDES
  - BTS = BOLT TO SHIP
  - SHPG BOLT = SHIPPING BOLT
  - ◇ = SHIPPING BOLT
  - D.O.R. = DIRECTION OF ROLL
  - T2 = CHAMPY V-NOTCH TESTING REQUIRED
  - F2 = FRACTURE CRITICAL MATERIAL
  - ⊗ = FIELD DRILLED HOLE
  - ⊗ = FIELD DRILLED HOLE

ALL DIMENSIONS HAVE BEEN FIELD VERIFIED  
 BY: \_\_\_\_\_ DATE: \_\_\_\_\_

A	NO.	DATE	RC	BY	REVISION
		04/25/12	RC		FOR APPROVAL
<b>STS STEEL, INC.</b> ENGINEERS • FABRICATORS • ERECTORS PH: (518) 370-2693 FAX: (518) 370-2696					
DRAWING TITLE					
<b>UPPER STEEL (STANDARDS)</b>					
PROJECT No. US RT 2 BRIDGE No 24 FEDERAL AID No.					
ENGINEER : CHA					
CUSTOMER : Harrison & Burrows Bridge Constructors, Inc.					
PROJECT : RICHMOND, VT - TRUSS BRIDGE REHAB					
RICHMOND, VT					
HOLE:	15/16" U.N.O.	PAINT:	PER SPEC	DATE:	04/17/12
BOLTS:	A325 U.N.O.	DR.BY:	PG	JOB NO.	1156
WELDS:	AWS D1.5	CHK.BY:	SG	DWG NO.	x91

ALL HOLES TO BE PUNCHED U.N.O.

