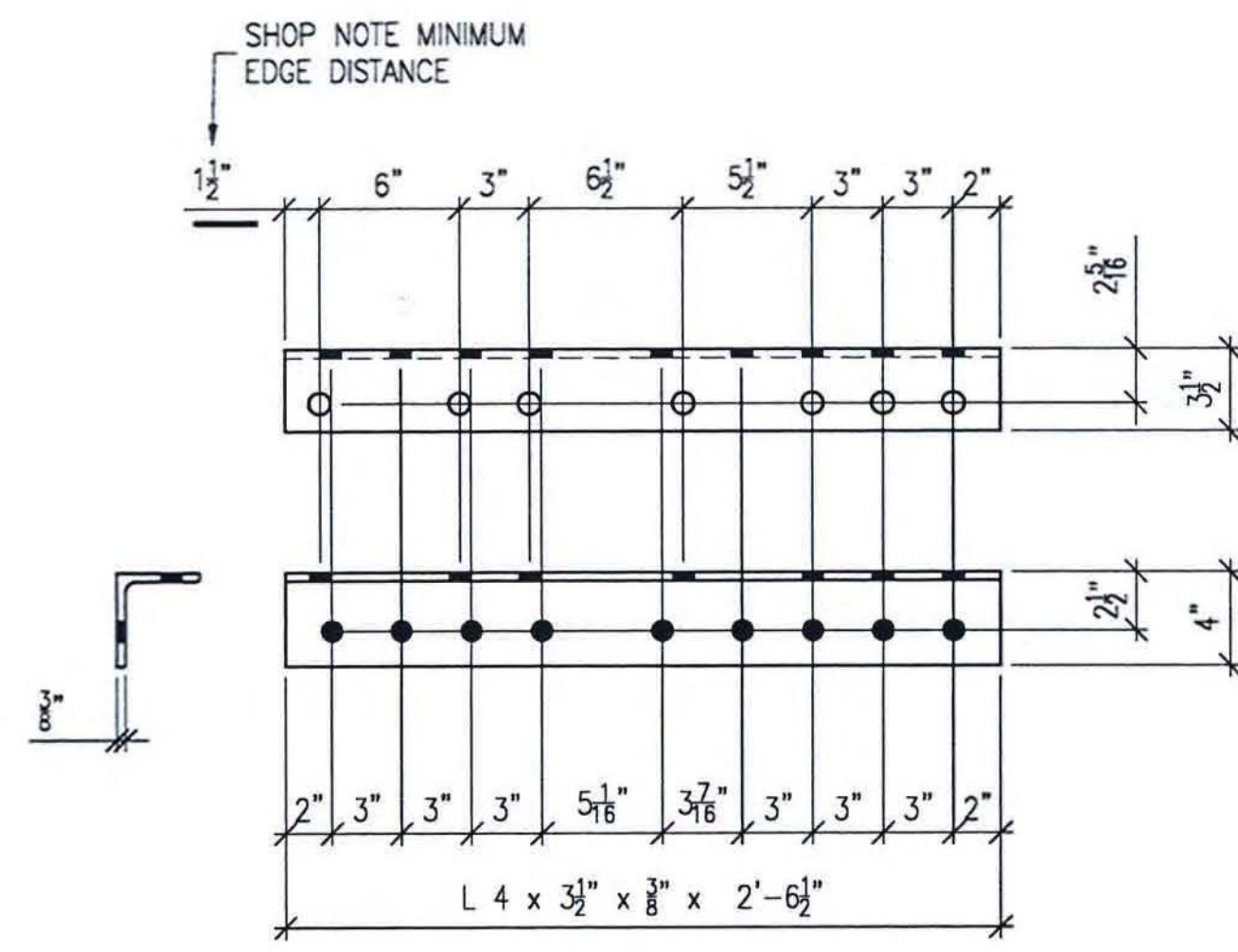


2 REQ'D ~ Mk. x80g

MATERIAL A709-50 T2

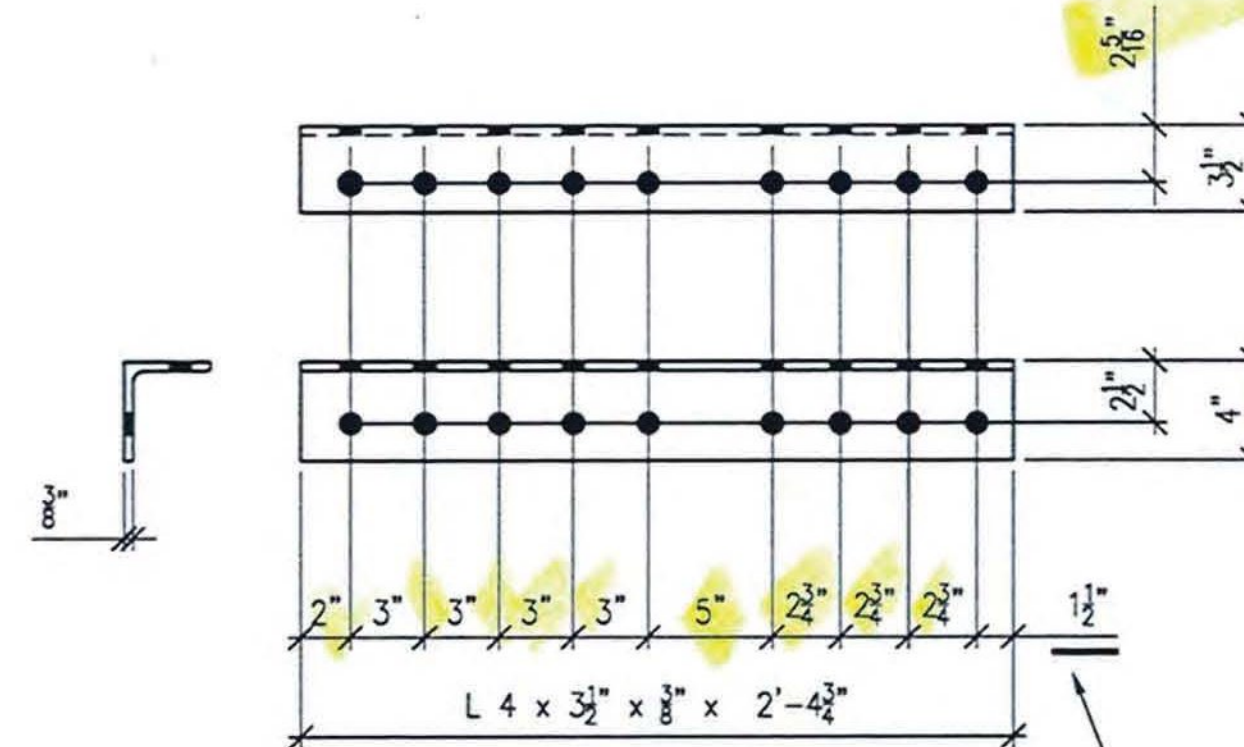
**DRILLED**



2 REQ'D ~ Mk. x80b

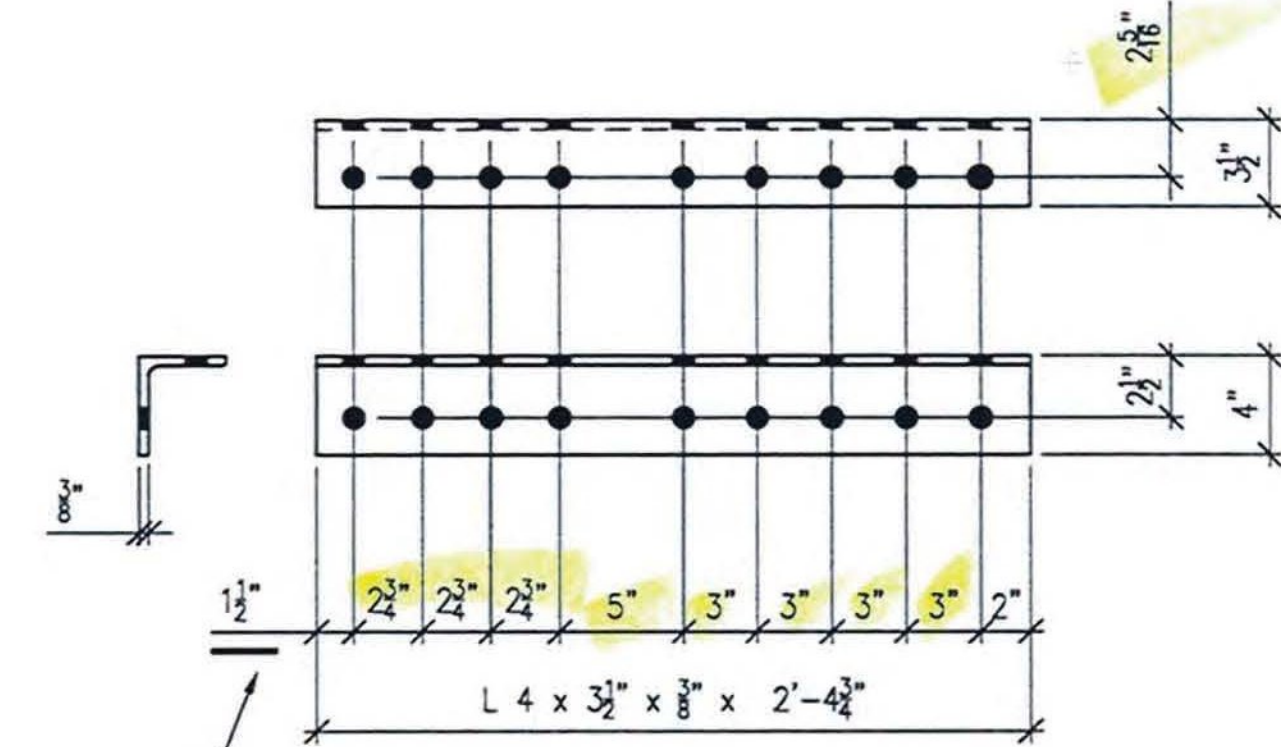
MATERIAL A709-50 T2

**DRILLED**



8 REQ'D ~ Mk. x80c

MATERIAL A709-50 T2



8 REQ'D ~ Mk. x80d

MATERIAL A709-50 T2

- NO EXCEPTION TAKEN
- REJECTED
- MAKE CORRECTIONS NOTED
- REVISE AND RESUBMIT
- SUBMIT SPECIFIED ITEM

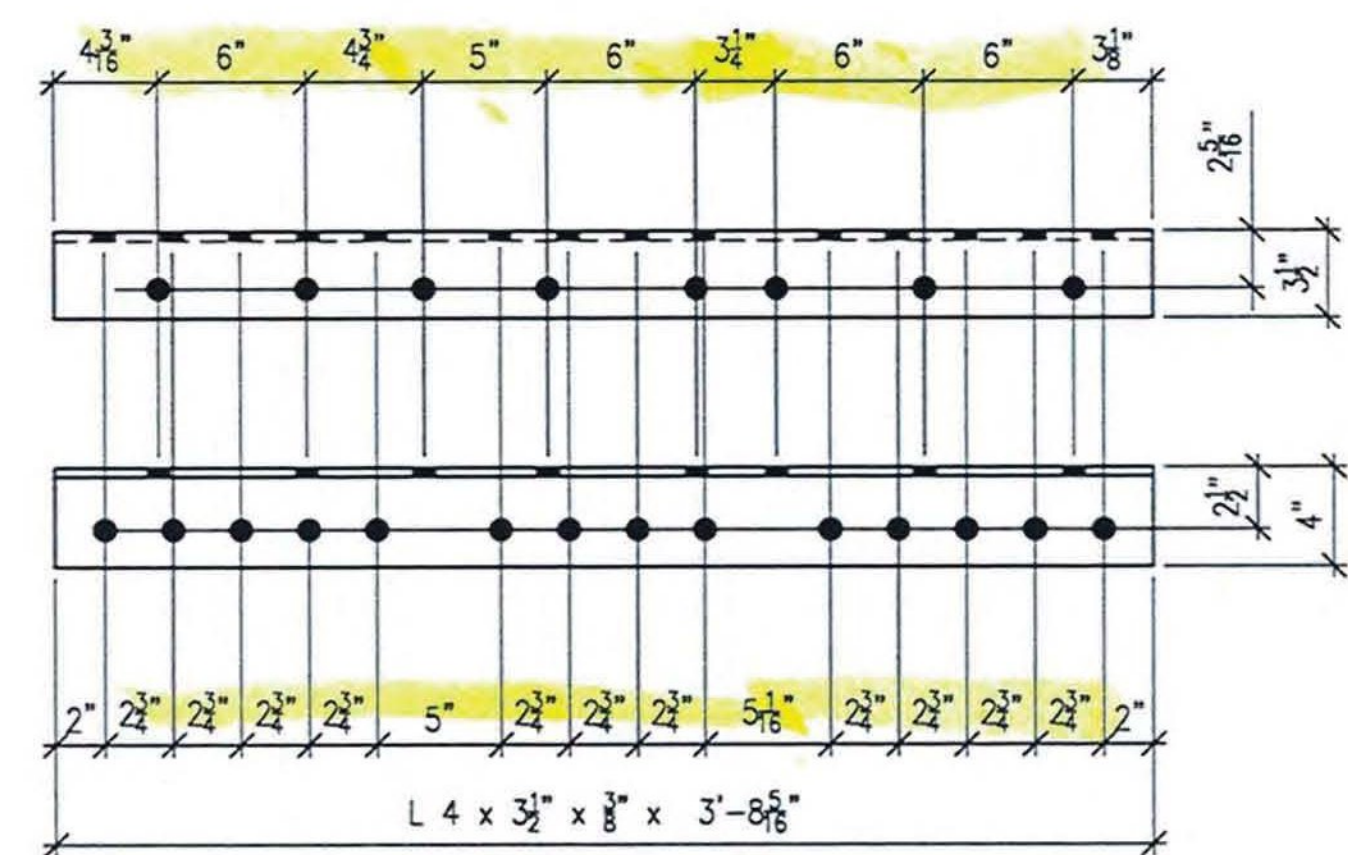
CHECKING IS ONLY FOR GENERAL CONFORMANCE WITH THE DESIGN CONCEPT OF THE PROJECT AND GENERAL COMPLIANCE WITH THE INFORMATION GIVEN IN THE CONTRACT DOCUMENTS. ANY ACTION SHOWN IS SUBJECT TO THE REQUIREMENTS OF THE PLANS AND SPECIFICATIONS. CONTRACTOR IS RESPONSIBLE FOR DIMENSIONS WHICH SHALL BE CONFIRMED AND CORRELATED AT THE JOB SITE; FABRICATION PROCESSES AND TECHNIQUES OF CONSTRUCTION; COORDINATION OF HIS WORK WITH THAT OF ALL OTHER TRADES AND THE SATISFACTORY PERFORMANCE OF THE WORK.

DATE 5/9/12 BY CHA/PA/d

**LEGEND:**

- CL = CENTERLINE
- CTR'D = CENTERED
- C/C = CENTER TO CENTER
- FLG = FLANGE
- TOP = TOP
- BTM = BOTTOM
- ROTH = RUNNING DIMENSIONS FROM HERE
- FIELD BOLTS (QUANTITY) DIAMETER x LENGTH
- ◇ = ALTERNATE HOLE DIAMETER
- TYP = TYPICAL
- N/S = NEAR SIDE
- F/S = FAR SIDE
- B/S = BOTH SIDES
- BTS = BOLT TO SHIP
- SHIP'G BOLT = SHIPPING BOLT
- ◇ = SHIPPING BOLT
- D.O.R. = DIRECTION OF ROLL
- T2 = CHARPY V-NOTCH TESTING REQUIRED
- F2 = FRACTURE CRITICAL MATERIAL
- ⊗ = FIELD DRILLED HOLE
- ⊗ = FIELD DRILLED HOLE

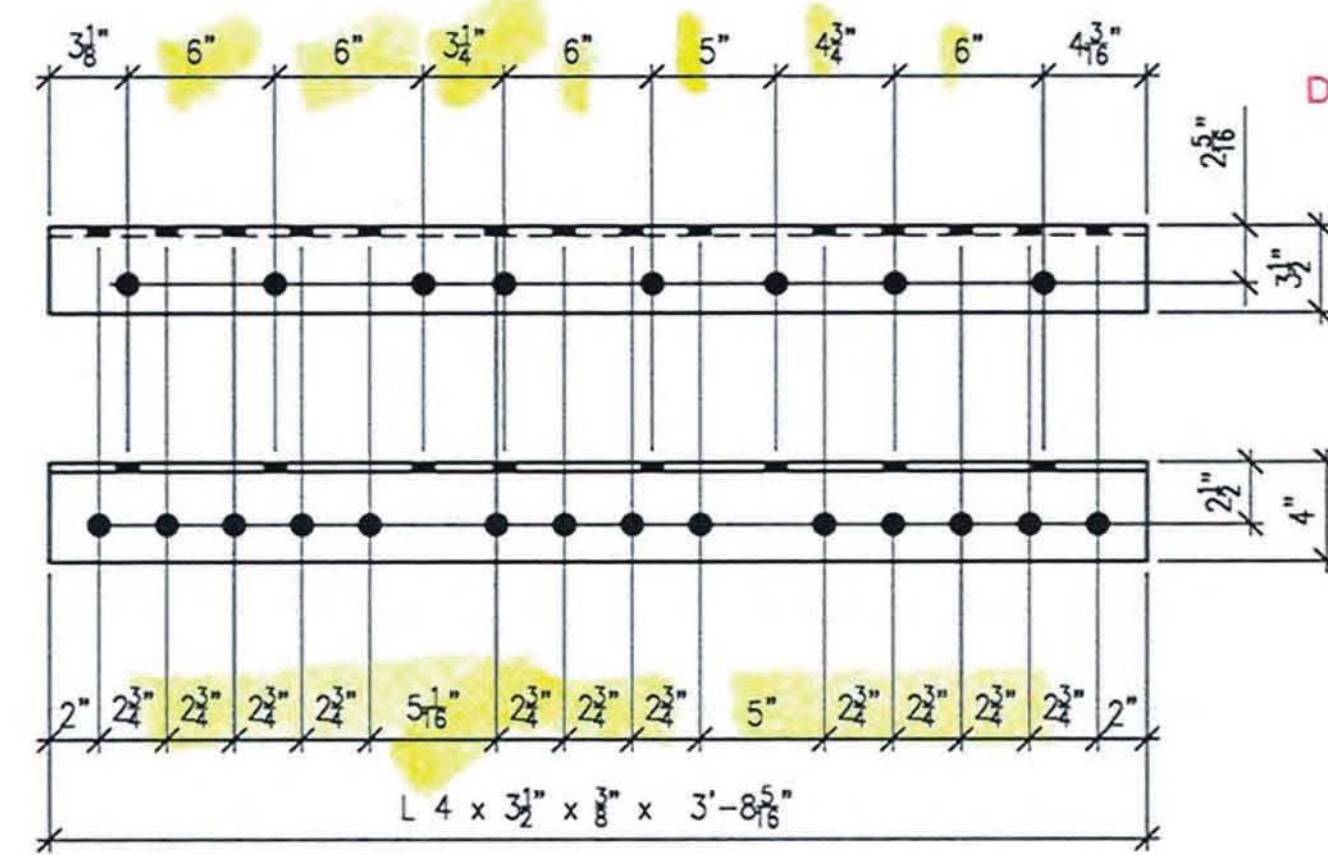
ALL DIMENSIONS HAVE BEEN FIELD VERIFIED  
BY: \_\_\_\_\_ DATE: \_\_\_\_\_



6 REQ'D ~ Mk. x80f

MATERIAL A709-50 T2

**DRILLED**



6 REQ'D ~ Mk. x80g

MATERIAL A709-50 T2

**DRILLED**

ALL HOLES TO BE PUNCHED U.N.O.

NO.	DATE	BY	REVISION
A	04/25/12	RC	FOR APPROVAL
<b>STS STEEL, INC.</b> ENGINEERS • FABRICATORS • ERECTORS PH: (518) 370-2693 FAX: (518) 370-2696			
DRAWING TITLE			
<b>UPPER STEEL (STANDARDS)</b>			
PROJECT No. US RT 2 BRIDGE No 24 FEDERAL AID No.			
ENGINEER : CHA			
CUSTOMER : Harrison & Burrowes Bridge Constructors, Inc.			
PROJECT : RICHMOND, VT - TRUSS BRIDGE REHAB			
RICHMOND, VT			
HOLE:	15/16" U.N.O.	PAINT:	PER SPEC
BOLTS:	A325 U.N.O.	DR.BY:	RC
WELDS:	AWS D1.5	CHEK.BY:	SG
DATE:	03/01/12	JOB NO.:	1156
		DWG NO.:	x80