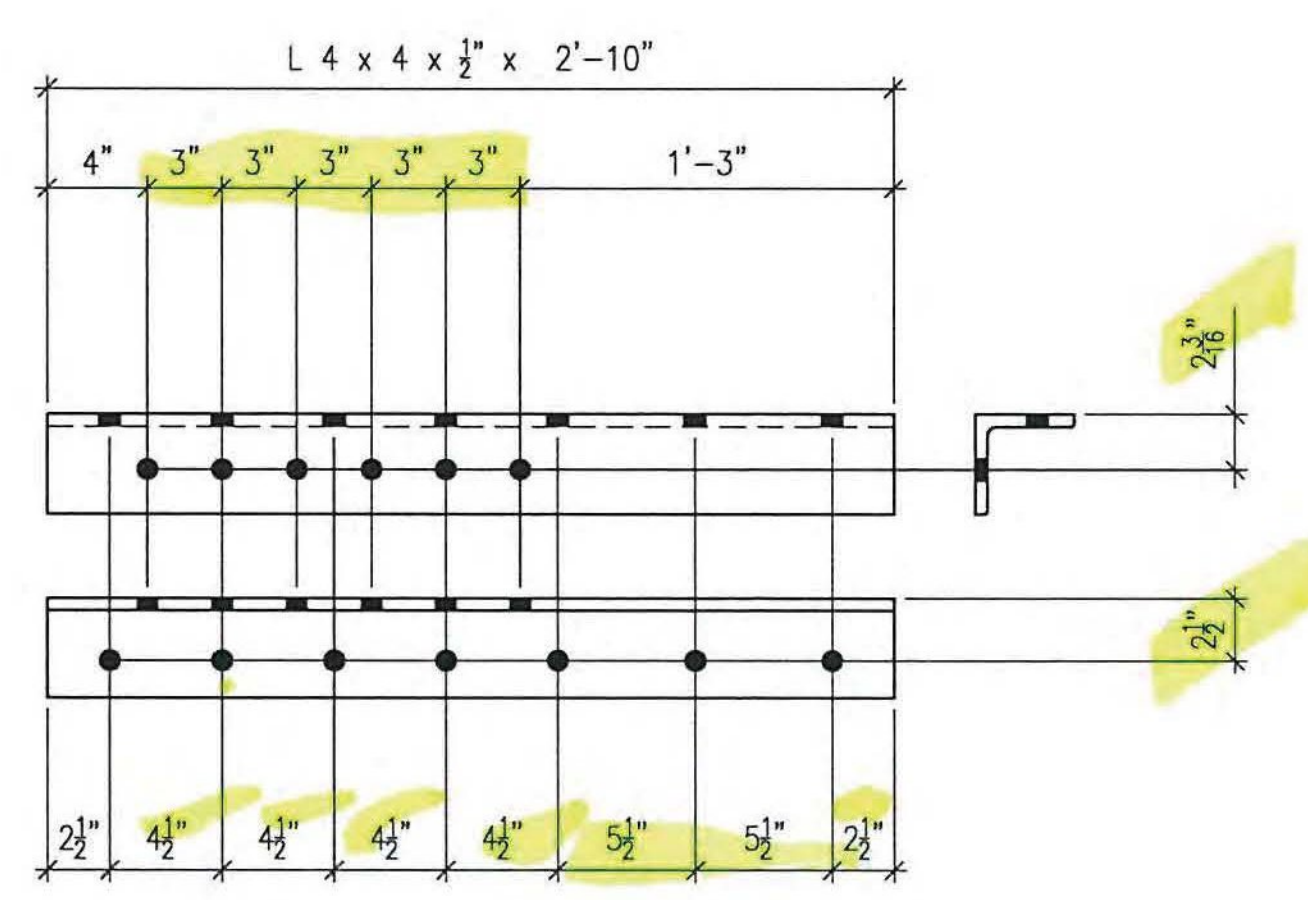


4 REQ'D ~ Mk. x4a
MATERIAL A709-50 T2



4 REQ'D ~ Mk. x4b
MATERIAL A709-50 T2

- LEGEND:**
- ⊕ = CENTERLINE
 - CTR'D = CENTERED
 - C/C = CENTER TO CENTER
 - FLG = FLANGE
 - TOP = TOP
 - BTM = BOTTOM
 - RDFH = RUNNING DIMENSIONS FROM HERE
 - = FIELD BOLTS (QUANTITY) DIAMETER x LENGTH
 - ◇ = ALTERNATE HOLE DIAMETER
 - TYP = TYPICAL
 - N/S = NEAR SIDE
 - F/S = FAR SIDE
 - B/S = BOTH SIDES
 - BTS = BOLT TO SHIP
 - ◇ = TEMPORARY BOLT FOR SHIPPING
 - D.O.R. = DIRECTION OF ROLL
 - T2 = CHARPY V-NOTCH TESTING REQUIRED
 - F2 = FRACTURE CRITICAL MATERIAL
 - ⊗ = FIELD DRILLED HOLE
 - ⊗ = FIELD DRILLED HOLE

ALL DIMENSIONS HAVE BEEN ACCEPTED/FIELD VERIFIED
 BY: _____ DATE: _____

- NO EXCEPTION TAKEN
- REJECTED
- MAKE CORRECTIONS NOTED
- REVISE AND RESUBMIT
- SUBMIT SPECIFIED ITEM

CHECKING IS ONLY FOR GENERAL CONFORMANCE WITH THE DESIGN CONCEPT OF THE PROJECT AND GENERAL COMPLIANCE WITH THE INFORMATION GIVEN IN THE CONTRACT DOCUMENTS. ANY ACTION SHOWN IS SUBJECT TO THE REQUIREMENTS OF THE PLANS AND SPECIFICATIONS. CONTRACTOR IS RESPONSIBLE FOR DIMENSIONS WHICH SHALL BE CONFIRMED AND CORRELATED AT THE JOB SITE. FABRICATION PROCESSES AND TECHNIQUES OF CONSTRUCTION; COORDINATION OF HIS WORK WITH THAT OF ALL OTHER TRADES AND THE SATISFACTORY PERFORMANCE OF THE WORK.

DATE 6/8/12 BY CHA

ALL HOLES TO BE DRILLED

1	06/04/12	RC	ISSUED FOR APP'L & FAB
NO.	DATE	BY	REVISION
STS STEEL, INC. ENGINEERS * FABRICATORS * ERECTORS PH: (518) 370-2693 FAX: (518) 370-2696			
DRAWING TITLE FLOOR SYSTEM (STANDARDS)			
PROJECT No. US RT 2 BRIDGE No 24		FEDERAL AID No.	
ENGINEER : CHA			
CUSTOMER : Harrison & Burrows Bridge Constructors, Inc.			
PROJECT : RICHMOND, VT - TRUSS BRIDGE REHAB			
RICHMOND, VT			
HOLE:	15/16" U.N.O.	PAINT	PER SPEC
BOLTS:	A325 GALV U.N.O.	DRWN:BY:	RC
WELDS:	AWS D1.5	CHK:BY:	SG
		DATE:	06/04/12
		JOB NO.	1156
		DWG NO.	x4