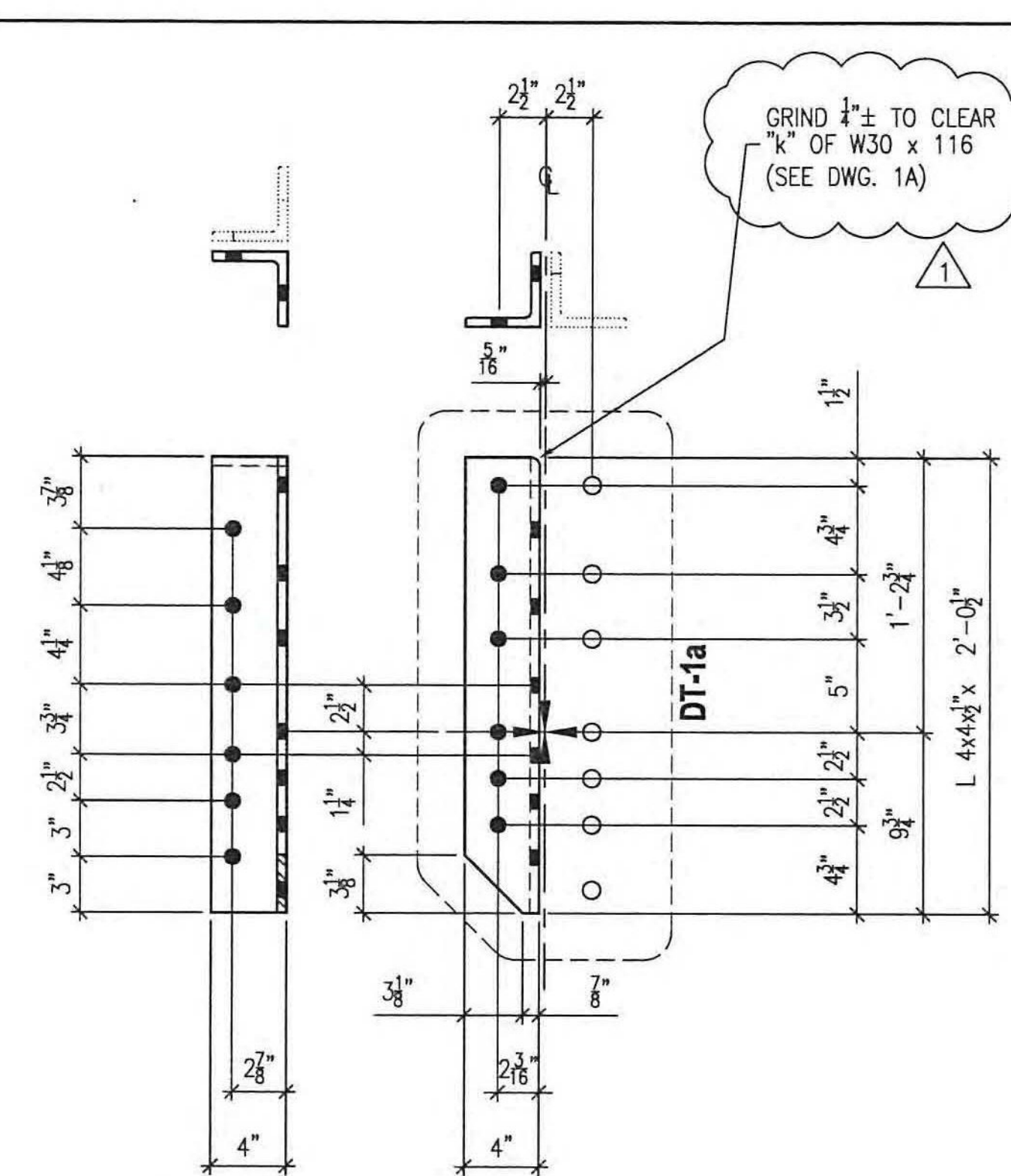
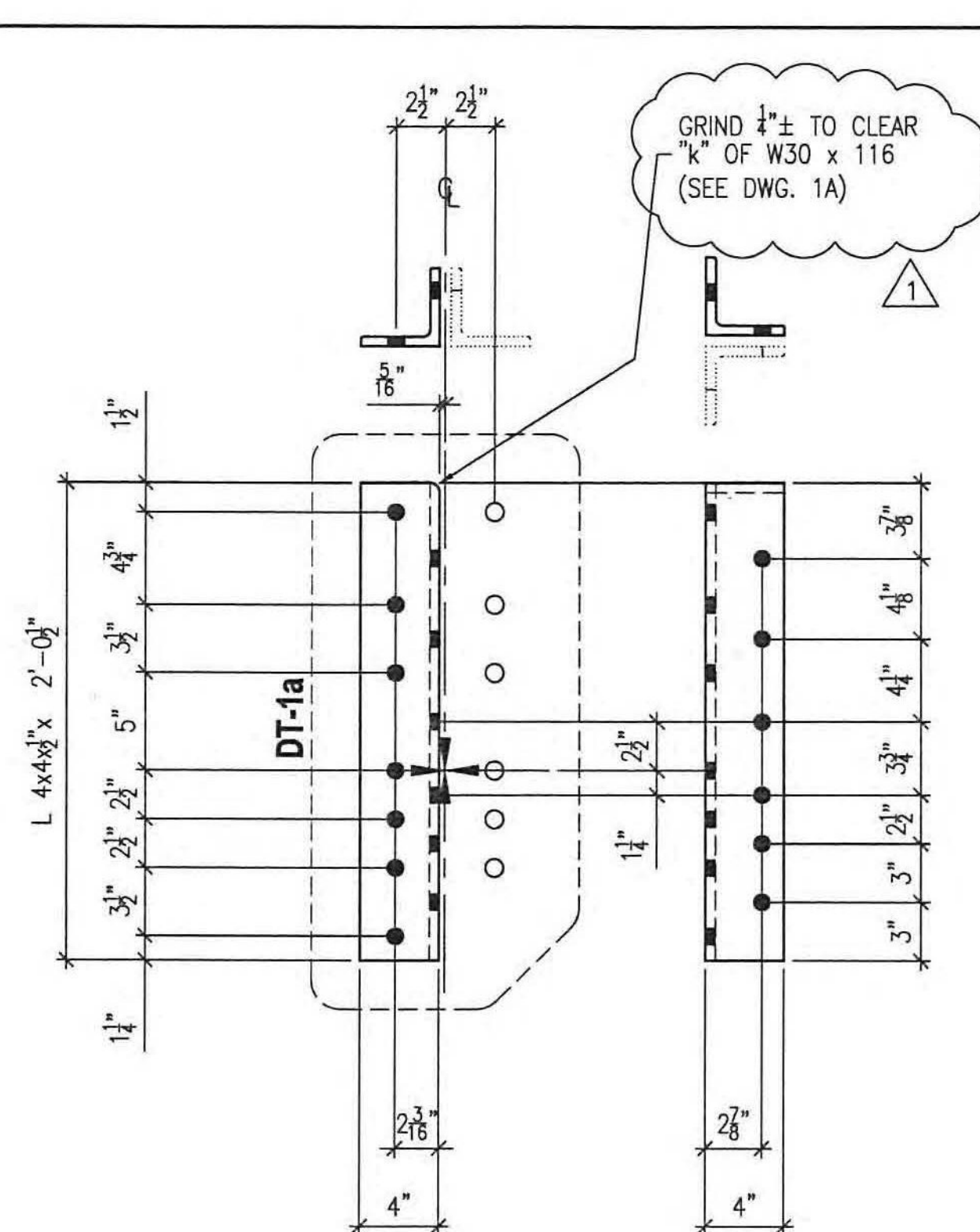


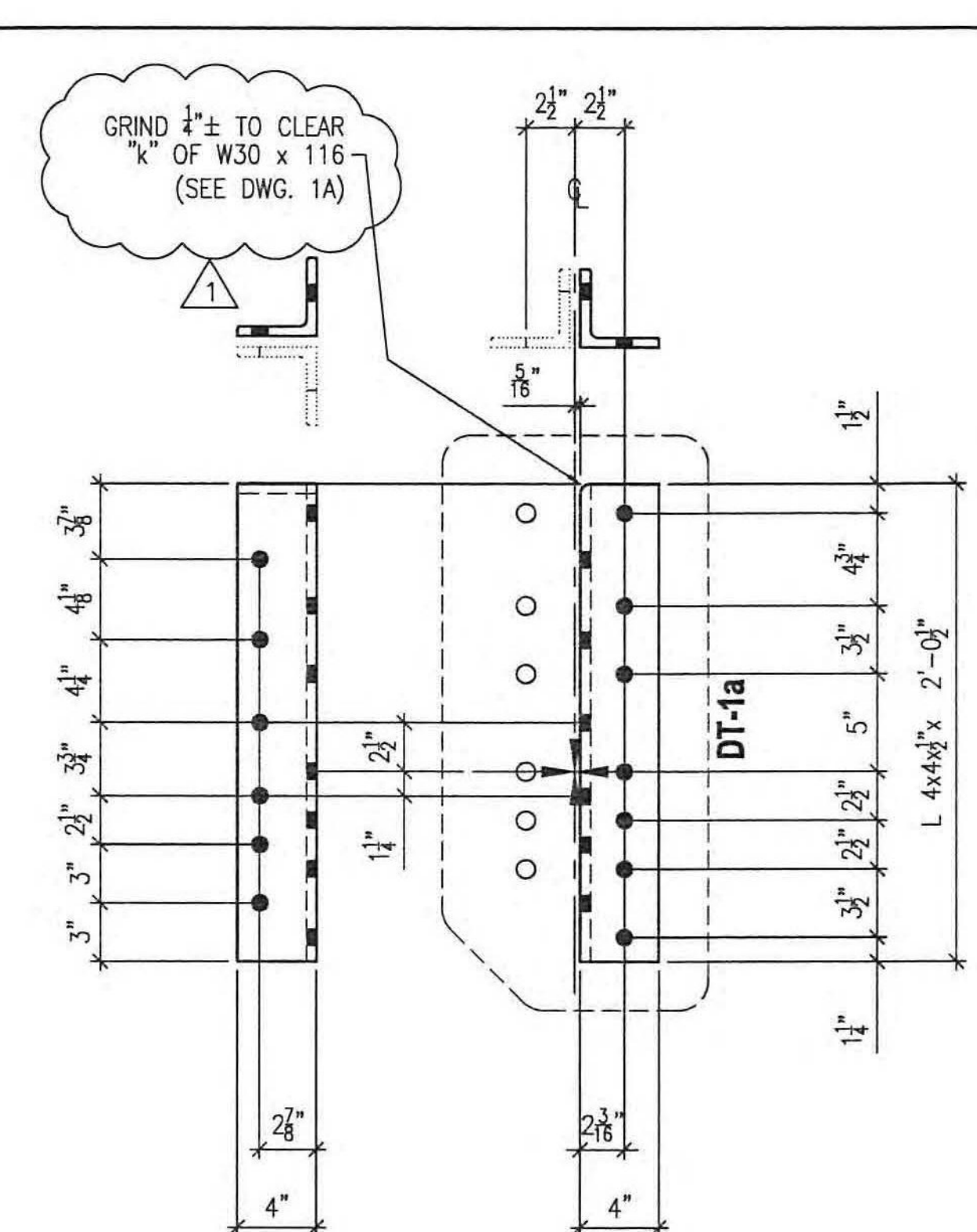
2 REQ'D ~ Mk. x2a  
MATERIAL A709-50 F2



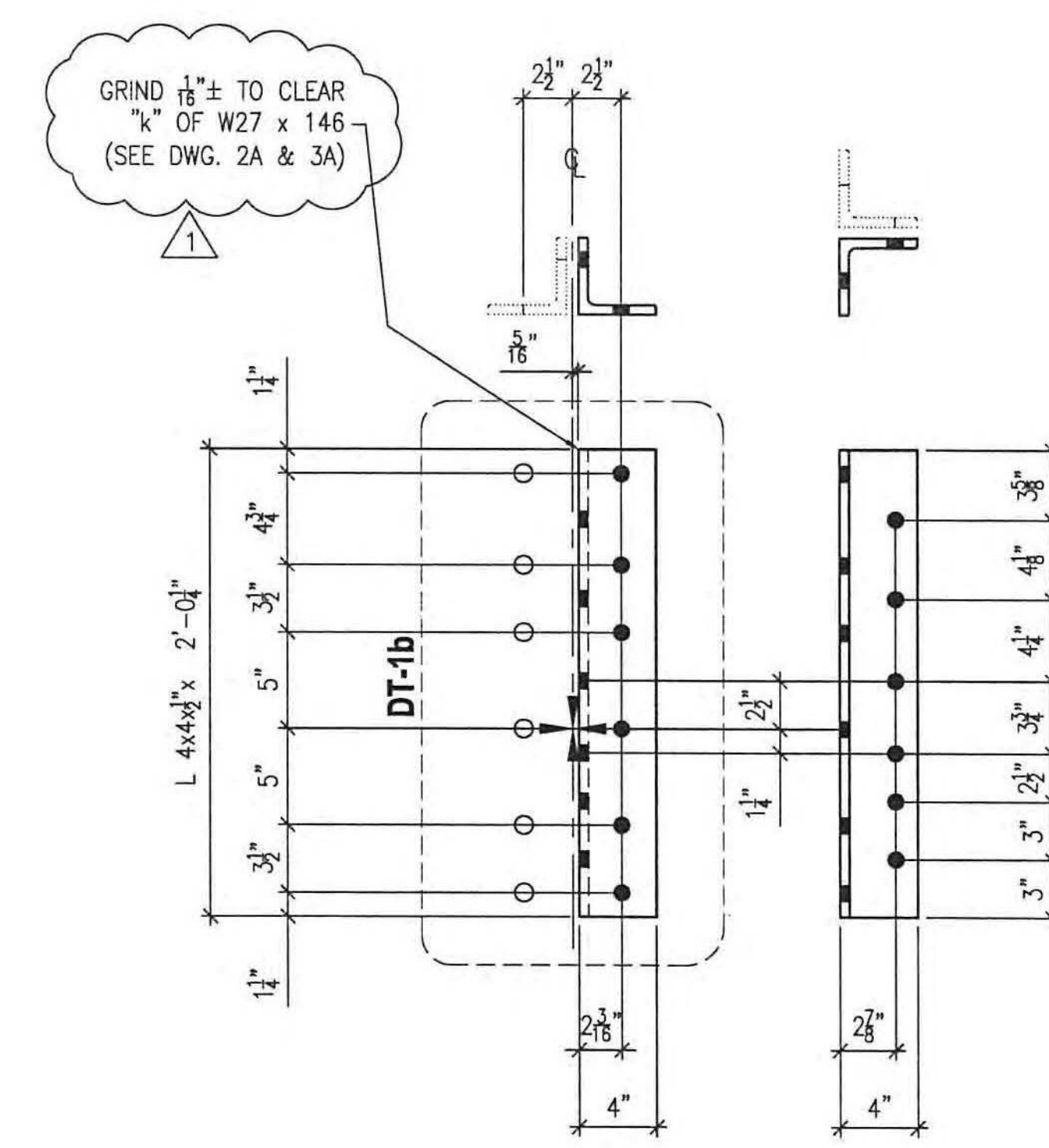
2 REQ'D ~ Mk. x2b  
MATERIAL A709-50 F2



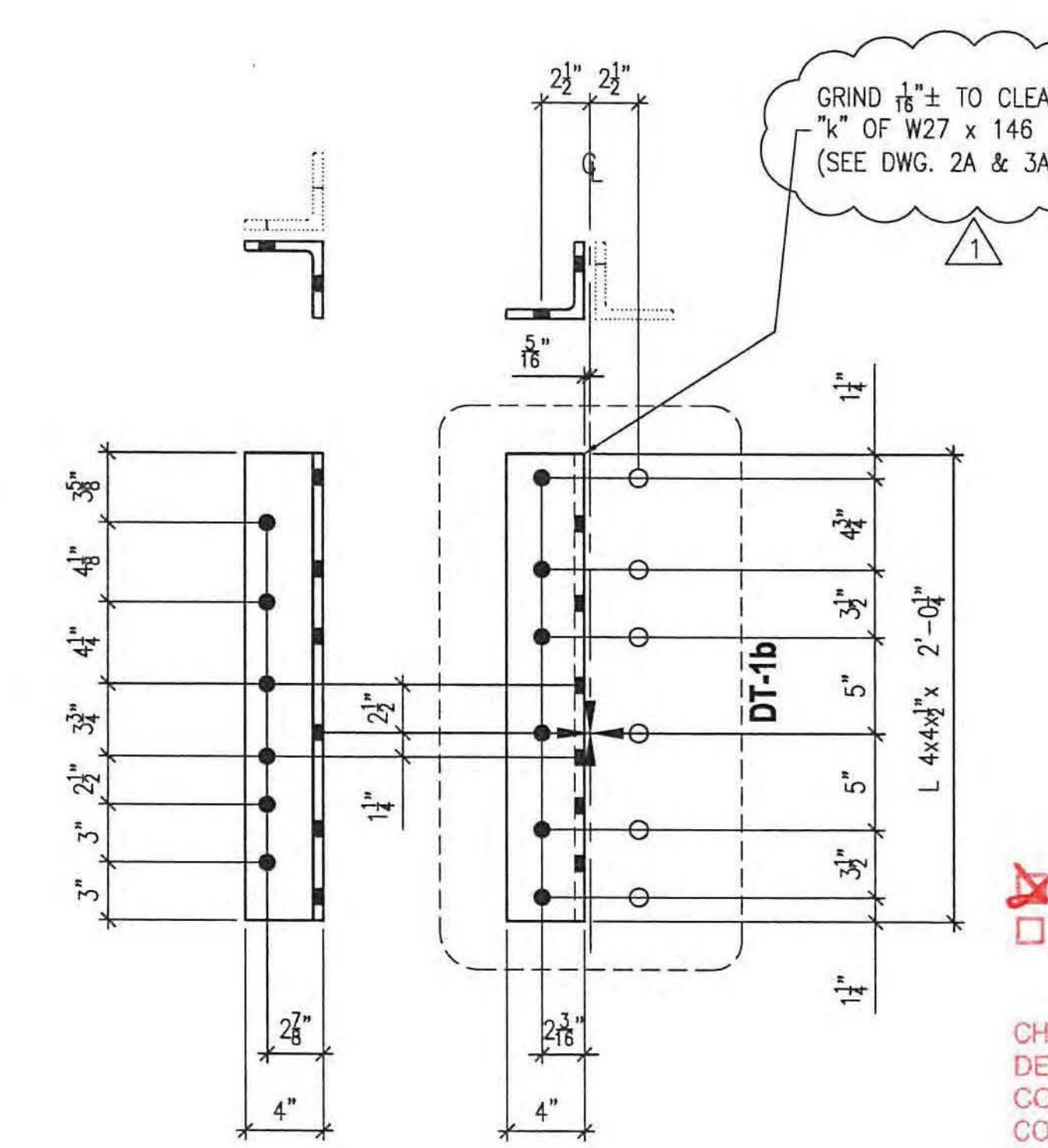
2 REQ'D ~ Mk. x2c  
MATERIAL A709-50 F2



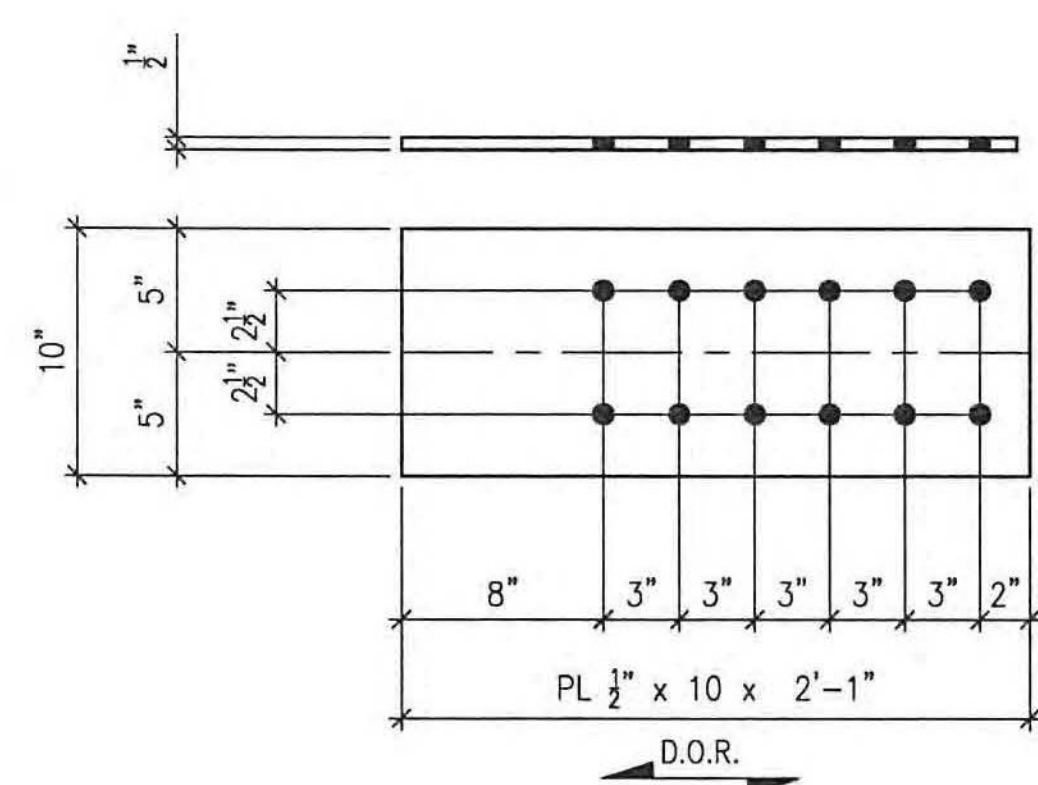
2 REQ'D ~ Mk. x2d  
MATERIAL A709-50 F2



34 REQ'D ~ Mk. x2f  
MATERIAL A709-50 F2



34 REQ'D ~ Mk. x2g  
MATERIAL A709-50 F2



4 REQ'D ~ Mk. x2k  
MATERIAL A709-50 F2

- LEGEND:**
- CL = CENTERLINE
  - CTR'D = CENTERED
  - C/C = CENTER TO CENTER
  - FLG = FLANGE
  - TOP = TOP
  - BTM = BOTTOM
  - RDFH = RUNNING DIMENSIONS FROM HERE
  - = FIELD BOLTS (QUANTITY) DIAMETER x LENGTH
  - ◇ = ALTERNATE HOLE DIAMETER
  - TYP = TYPICAL
  - N/S = NEAR SIDE
  - F/S = FAR SIDE
  - B/S = BOTH SIDES
  - BTS = BOLT TO SHIP
  - ◇ = TEMPORARY BOLT FOR SHIPPING
  - D.O.R. = DIRECTION OF ROLL
  - T2 = CHARPY V-NOTCH TESTING REQUIRED
  - F2 = FRACTURE CRITICAL MATERIAL
  - ⊗ = FIELD DRILLED HOLE
  - ⊗ = FIELD DRILLED HOLE

NO EXCEPTION TAKEN  
 REJECTED

MAKE CORRECTIONS NOTED  
 REVISE AND RESUBMIT  
 SUBMIT SPECIFIED ITEM

CHECKING IS ONLY FOR GENERAL CONFORMANCE WITH THE DESIGN CONCEPT OF THE PROJECT AND GENERAL COMPLIANCE WITH THE INFORMATION GIVEN IN THE CONTRACT DOCUMENTS. ANY ACTION SHOWN IS SUBJECT TO THE REQUIREMENTS OF THE PLANS AND SPECIFICATIONS. CONTRACTOR IS RESPONSIBLE FOR DIMENSIONS WHICH SHALL BE CONFIRMED AND CORRELATED AT THE JOB SITE; FABRICATION PROCESSES AND TECHNIQUES OF CONSTRUCTION; COORDINATION OF HIS WORK WITH THAT OF ALL OTHER TRADES AND THE SATISFACTORY PERFORMANCE OF THE WORK.

DATE 3/30/12 BY *CHA* *PKR*

**THIS DRAWINGS CONTAINS FCM MATERIAL**  
**ALL HOLES TO BE DRILLED**

ALL DIMENSIONS HAVE BEEN ACCEPTED/FIELD VERIFIED  
BY: \_\_\_\_\_ DATE: \_\_\_\_\_

1	03/28/12	RC	ISSUED FOR FINAL APPROVAL
F	03/15/12	RC	BOLTS REVISED TO A325 GALV
D	03/06/12	SG/RC	REVISED PER NEW CONTRACT DWGS ISSUED FOR APP'L
NO.	DATE	BY	REVISION
<b>STS STEEL, INC.</b> ENGINEERS • FABRICATORS • ERECTORS PH: (518) 370-2693 FAX: (518) 370-2696			
DRAWING TITLE <b>FLOOR SYSTEM (STANDARDS)</b>			
PROJECT No. US RT 2 BRIDGE No 24 FEDERAL AID No.			
ENGINEER : CHA			
CUSTOMER : Harrison & Burrowes Bridge Constructors, Inc.			
PROJECT : RICHMOND, VT - TRUSS BRIDGE REHAB			
RICHMOND, VT			
HOLE:	15/16" U.N.O.	PAIN	PER SPEC
BOLTS:	A325 GALV U.N.O.	DRWN:BY:	RC
WELDS:	AWS D1.5	CHK:BY:	KC
		DATE:	03/01/12
		JOB NO.	1156
		DWG NO.	x2

