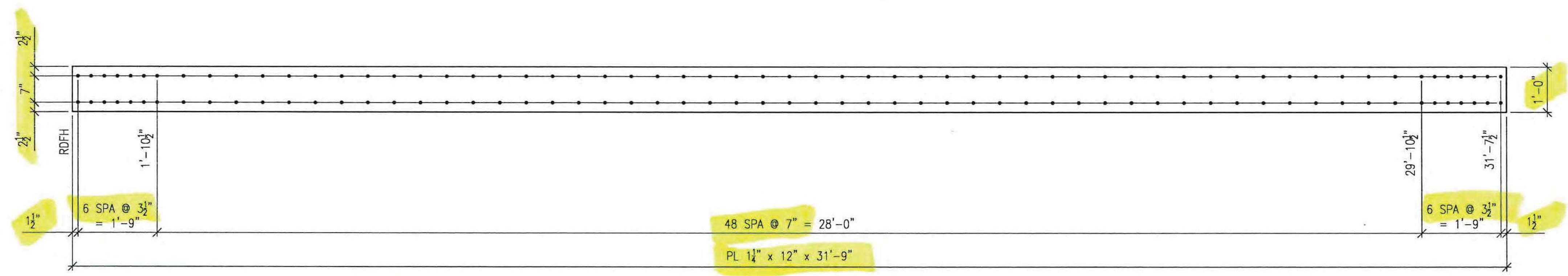
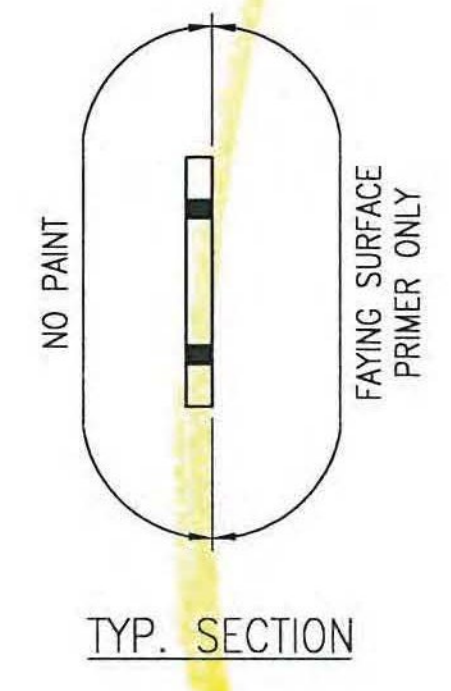


8 REQ'D ~ Mk. M98A  
MATERIAL A709-50 F2 (FCM)

LIFTING WEIGHT  
????  
lbs



8 REQ'D ~ Mk. M98B  
MATERIAL A709-50 F2 (FCM)

LIFTING WEIGHT  
????  
lbs

- NO EXCEPTION TAKEN
- REJECTED
- MAKE CORRECTIONS NOTED
- REVISE AND RESUBMIT
- SUBMIT SPECIFIED ITEM

CHECKING IS ONLY FOR GENERAL CONFORMANCE WITH THE DESIGN CONCEPT OF THE PROJECT AND GENERAL COMPLIANCE WITH THE INFORMATION GIVEN IN THE CONTRACT DOCUMENTS. ANY ACTION SHOWN IS SUBJECT TO THE REQUIREMENTS OF THE PLANS AND SPECIFICATIONS. CONTRACTOR IS RESPONSIBLE FOR DIMENSIONS WHICH SHALL BE CONFIRMED AND CORRELATED AT THE JOB SITE; FABRICATION PROCESSES AND TECHNIQUES OF CONSTRUCTION; COORDINATION OF HIS WORK WITH THAT OF ALL OTHER TRADES AND THE SATISFACTORY PERFORMANCE OF THE WORK.

DATE 5/30/12 BY CHA  
PKC/dj

- PAINT NOTES:
- ALL ITEMS THIS SHEET TO RECEIVE PRIMER ONLY ON FAYING SURFACES AS DESCRIBED ON UPPER STEEL PAINT SYSTEM PER GN1.
- NOTES:
- FOR GENERAL NOTES SEE DRAWING GN1.
  - ALL BOLTS THIS SHEET TO BE FULLY TORQUED UNLESS NOTED AS (A307) SHIPPING BOLTS.
  - INSTALL WASHER UNDER HEAD OF BOLT AS WELL AS NUT. ADDITIONAL WASHER IS NOT REQUIRED FOR (A307) SHIPPING BOLTS.
  - ALL HOLES MARKED "X" OR "X" ARE TO BE FIELD DRILLED HOLES. DO NOT SHOP DRILL.

THIS DRAWINGS CONTAINS FCM MATERIAL

BILL OF MATERIALS

LINE	SEQ	SHIPPING PCS	ASSEMBLY PCS	MARK	SHAPE	DESCRIPTION	LENGTH		REMARKS	MATERIAL ASTM A709-50 T2 U.N.O.					
							ft	in		MATL GRADE	MATL REMARK	WEIGHT	HEAT NO		
1															
2	B			M98A	PL	1 1/4 x 12	28	6		A709-50 F2					
3															
4	B			M98B	PL	1 1/4 x 12	31	9		A709-50 F2					
5															
6															
7															
8															
9															
10															
11															
12															
13															
14															
15															
16															
17															
18															
19															
20															
21															
22															
23															
24															
25															

ALL HOLES TO BE PUNCHED U.N.O.

- LEGEND:
- C = CENTERLINE
  - CTR'D = CENTERED
  - C/C = CENTER TO CENTER
  - FLG = FLANGE
  - TOP = TOP
  - BTM = BOTTOM
  - RDFH = RUNNING DIMENSIONS FROM HERE
  - FIELD BOLTS (QUANTITY) DIAMETER x LENGTH
  - ◇ = ALTERNATE HOLE DIAMETER
  - TYP = TYPICAL
  - N/S = NEAR SIDE
  - F/S = FAR SIDE
  - B/S = BOTH SIDES
  - BTS = BOLT TO SHIP
  - SHIP'G BOLT = SHIPPING BOLT
  - ◇ = SHIPPING BOLT
  - D.O.R. = DIRECTION OF ROLL
  - T2 = CHARPY V-NOTCH TESTING REQUIRED
  - F2 = FRACTURE CRITICAL MATERIAL
  - X = FIELD DRILLED HOLE
  - X = FIELD DRILLED HOLE

ALL DIMENSIONS HAVE BEEN FIELD VERIFIED  
BY: \_\_\_\_\_ DATE: \_\_\_\_\_

A	04/27/12	SG	FOR APPROVAL
NO.	DATE	BY	REVISION
<b>STS STEEL, INC.</b> ENGINEERS * FABRICATORS * ERECTORS PH: (518) 370-2693 FAX: (518) 370-2696			
DRAWING TITLE <b>TRUSS REPAIR (REINFORCING)</b>			
PROJECT No. US RT 2 BRIDGE No 24 FEDEP: AID No.			
ENGINEER: CHA			
CUSTOMER: Harrison & Burrowes Bridge Constructors, Inc.			
PROJECT: RICHMOND, VT - TRUSS BRIDGE REHAB			
RICHMOND, VT			
HOLE:	15/16" U.N.O.	PAIN:	PER SPEC
BOLTS:	A325 U.N.O.	DR. BY:	SG
WELDS:	AWS D1.5	CHK. BY:	RC
		DATE:	04/18/12
		JOB NO.	1156
		DWG NO.	98