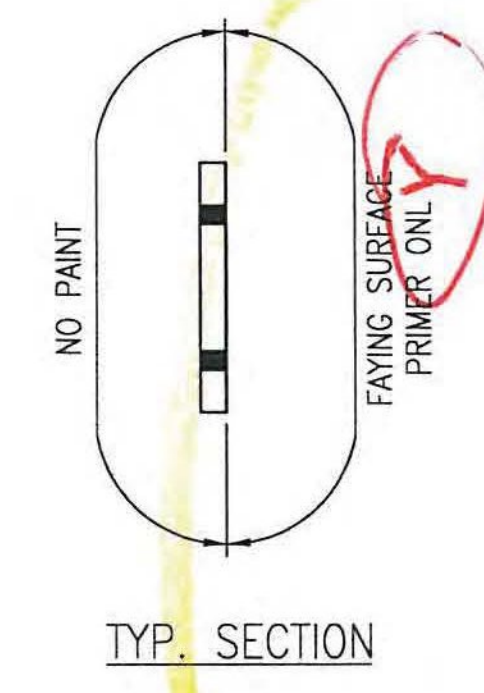


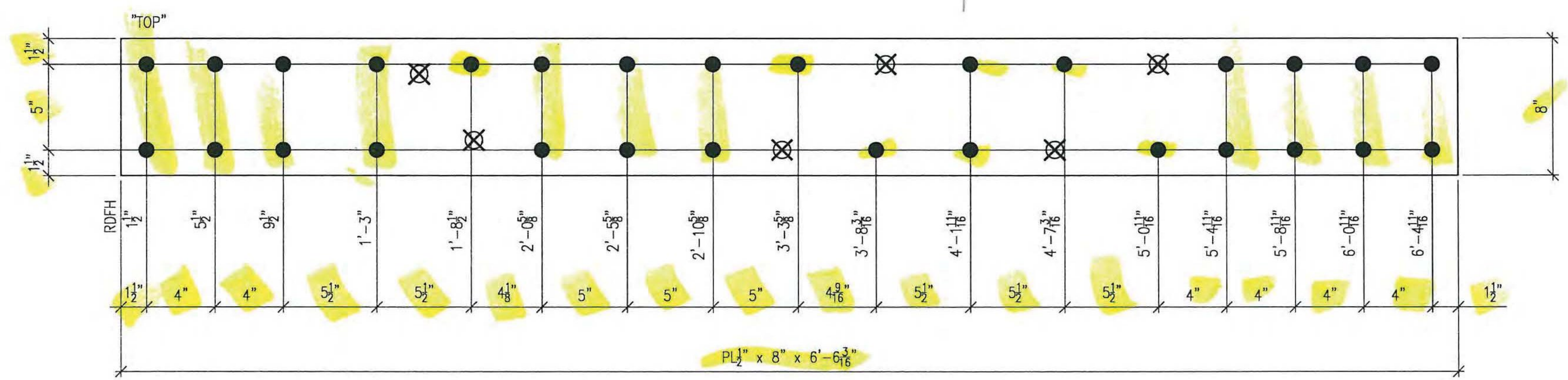
4 REQ'D ~ Mk. M97A
MATERIAL A709-50 F2 (FCM)

LIFTING WEIGHT
????
lbs



BILL OF MATERIALS									
SHOP BILL								MATERIAL ASTM A709-50 T2 U.N.O.	
LINE	SEQ	SHIPPING POS	ASSEMBLY POS	MARK	SHAPE	DESCRIPTION	LENGTH		REMARKS
							ft	in	
1									
2	4			M97A	PL	1/2 x 8	3	9 5/8	A709-50 F2
3									
4	3			M97B	PL	1/2 x 8	6	6 3/8	A709-50 F2
5									
6									
7									
8									
9									
10									
11									
12									
13									
14									
15									
16									
17									
18									
19									
20									
21									
22									
23									
24									
25									

ALL HOLES TO BE PUNCHED U.N.O.



3 REQ'D ~ Mk. M97B
MATERIAL A709-50 F2 (FCM)

LIFTING WEIGHT
????
lbs

SPECIFY FAYING SURFACE SIDE PER EACH REQ'D

- NO EXCEPTION TAKEN
- REJECTED
- MAKE CORRECTIONS NOTED
- REVISE AND RESUBMIT
- SUBMIT SPECIFIED ITEM

CHECKING IS ONLY FOR GENERAL CONFORMANCE WITH THE DESIGN CONCEPT OF THE PROJECT AND GENERAL COMPLIANCE WITH THE INFORMATION GIVEN IN THE CONTRACT DOCUMENTS. ANY ACTION SHOWN IS SUBJECT TO THE REQUIREMENTS OF THE PLANS AND SPECIFICATIONS. CONTRACTOR IS RESPONSIBLE FOR DIMENSIONS WHICH SHALL BE CONFIRMED AND CORRELATED AT THE JOB SITE; FABRICATION PROCESSES AND TECHNIQUES OF CONSTRUCTION; COORDINATION OF HIS WORK WITH THAT OF ALL OTHER TRADES AND THE SATISFACTORY PERFORMANCE OF THE WORK.

DATE 5/30/12 BY PKR/LL

THIS DRAWINGS CONTAINS FCM MATERIAL

PAINT NOTES:

- ALL ITEMS THIS SHEET TO RECEIVE PRIMER ONLY ON FAYING SURFACES AS DESCRIBED ON UPPER STEEL PAINT SYSTEM PER G1.

NOTES:

- FOR GENERAL NOTES SEE DRAWING G1.
- ALL BOLTS THIS SHEET TO BE FULLY TORQUED UNLESS NOTED AS (A307) SHIPPING BOLTS.
- INSTALL WASHER UNDER HEAD OF BOLT AS WELL AS NUT. ADDITIONAL WASHER IS NOT REQUIRED FOR (A307) SHIPPING BOLTS.
- ALL HOLES MARKED "X" OR "X" ARE TO BE FIELD DRILLED HOLES. DO NOT SHOP DRILL.

LEGEND:

- C = CENTERLINE
- CTR'D = CENTERED
- C/C = CENTER TO CENTER
- FLC = FLANGE
- TOP = TOP
- BTM = BOTTOM
- RDFH = RUNNING DIMENSIONS FROM HERE
- = FIELD BOLTS (QUANTITY) DIAMETER x LENGTH
- ◇ = ALTERNATE HOLE DIAMETER
- TYP = TYPICAL
- N/S = NEAR SIDE
- F/S = FAR SIDE
- B/S = BOTH SIDES
- BTS = BOLT TO SHIP
- SHIP'G BOLT = SHIPPING BOLT
- ◇ = SHIPPING BOLT
- D.O.R. = DIRECTION OF ROLL
- T2 = CHARPY V-NOTCH TESTING REQUIRED
- F2 = FRACTURE CRITICAL MATERIAL
- X = FIELD DRILLED HOLE
- X = FIELD DRILLED HOLE

ALL DIMENSIONS HAVE BEEN FIELD VERIFIED BY: _____ DATE: _____

A	04/27/12	SG	FOR APPROVAL
NO.	DATE	BY	REVISION
STS STEEL, INC. ENGINEERS • FABRICATORS • ERECTORS PH: (518) 370-2693 FAX: (518) 370-2696			
DRAWING TITLE TRUSS REPAIR (REINFORCING)			
PROJECT No. US RT 2 BRIDGE No 24 FEDERAL AID No.			
ENGINEER : CHA			
CUSTOMER : Harrison & Burrows Bridge Constructors, Inc.			
PROJECT : RICHMOND, VT - TRUSS BRIDGE REHAB RICHMOND, VT			
HOLES:	15/16" U.N.O.	PAINT:	PER SPEC
BOLTS:	A325 U.N.O.	DR.BY:	SG
WELDS:	AWS D1.5	CHK.BY:	RC
		DATE:	04/18/12
		JOB NO.	1156
		DWG NO.	97