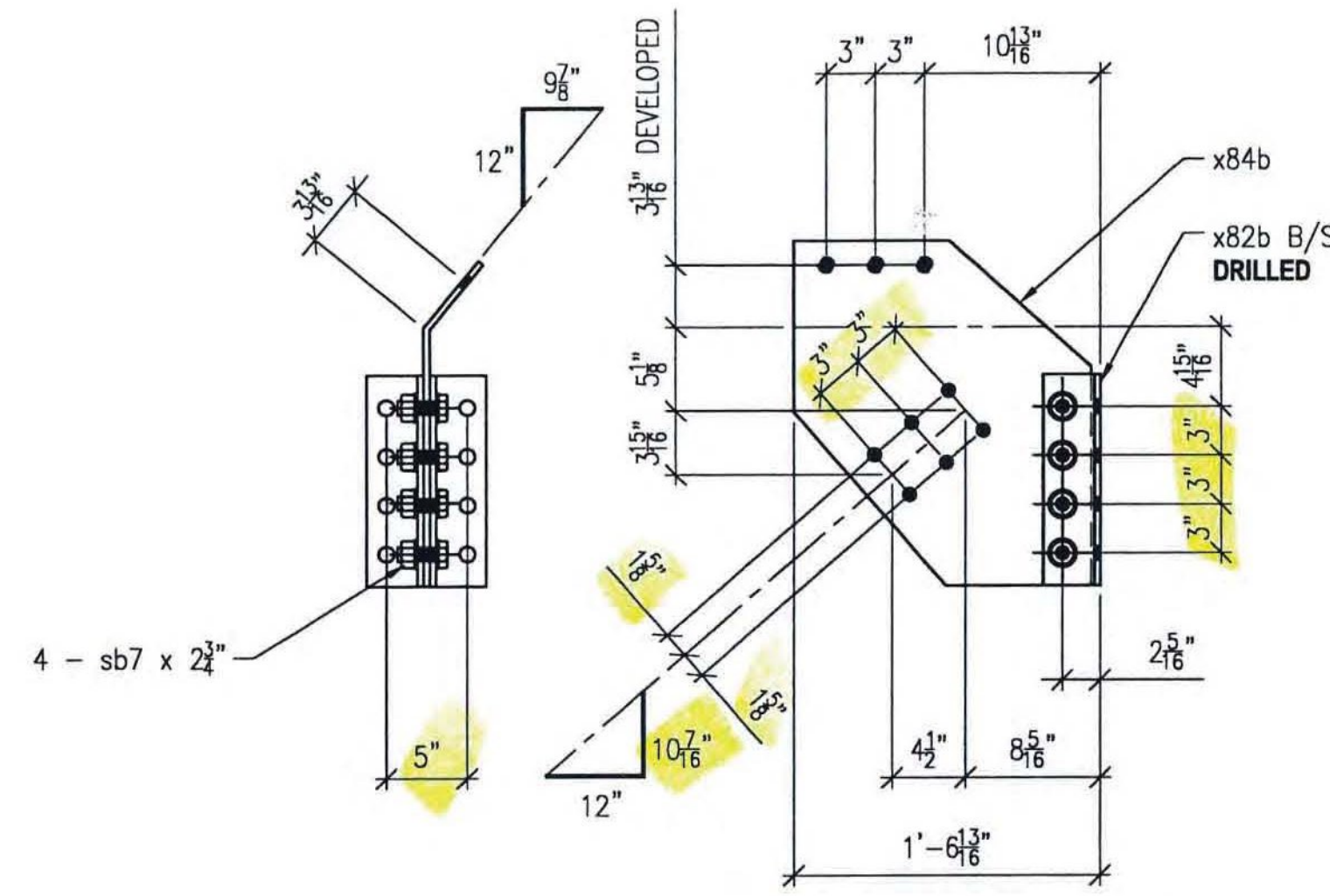


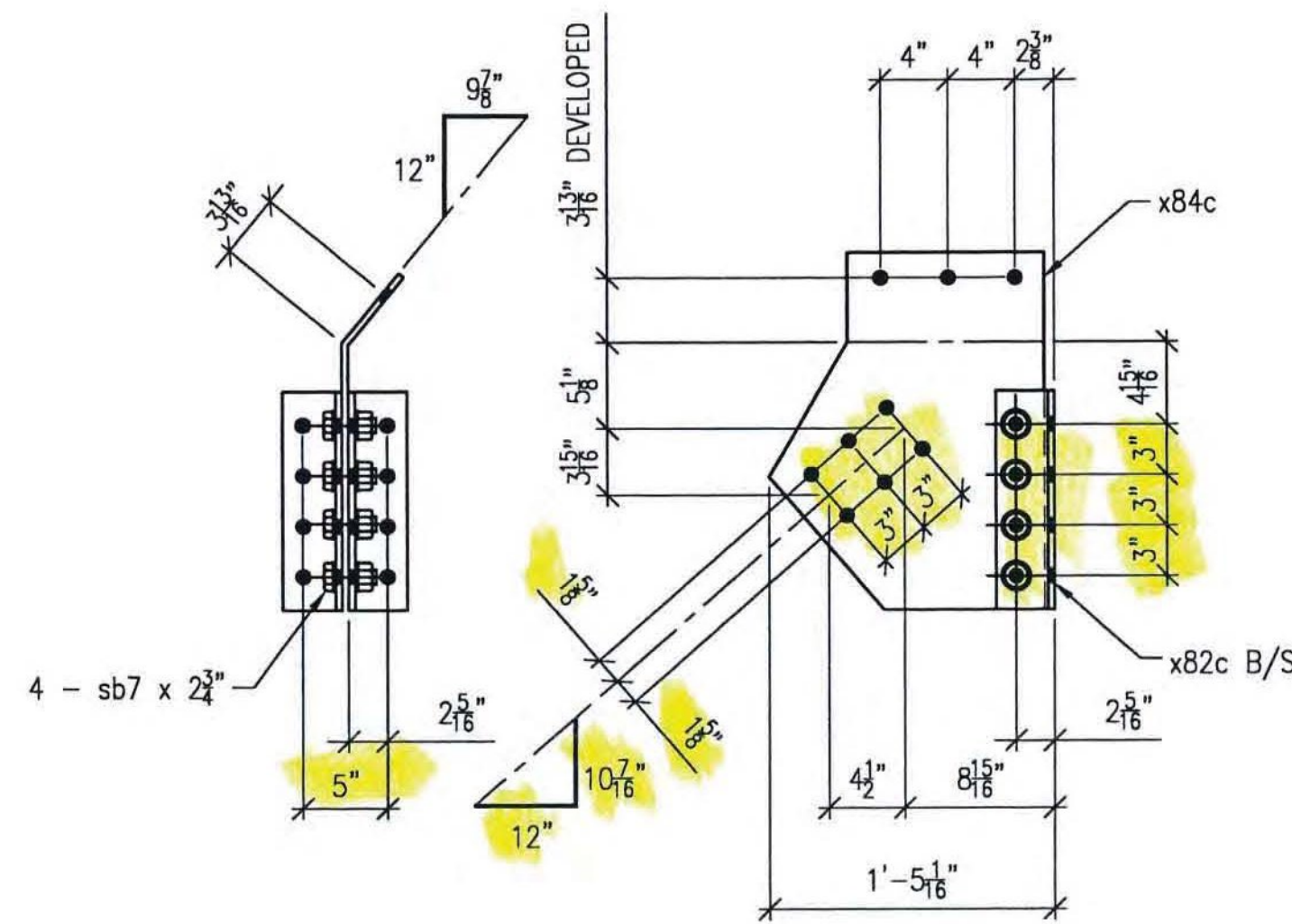
ONE REQ'D ~ Mk. M83A

LIFTING WEIGHT  
? lbs



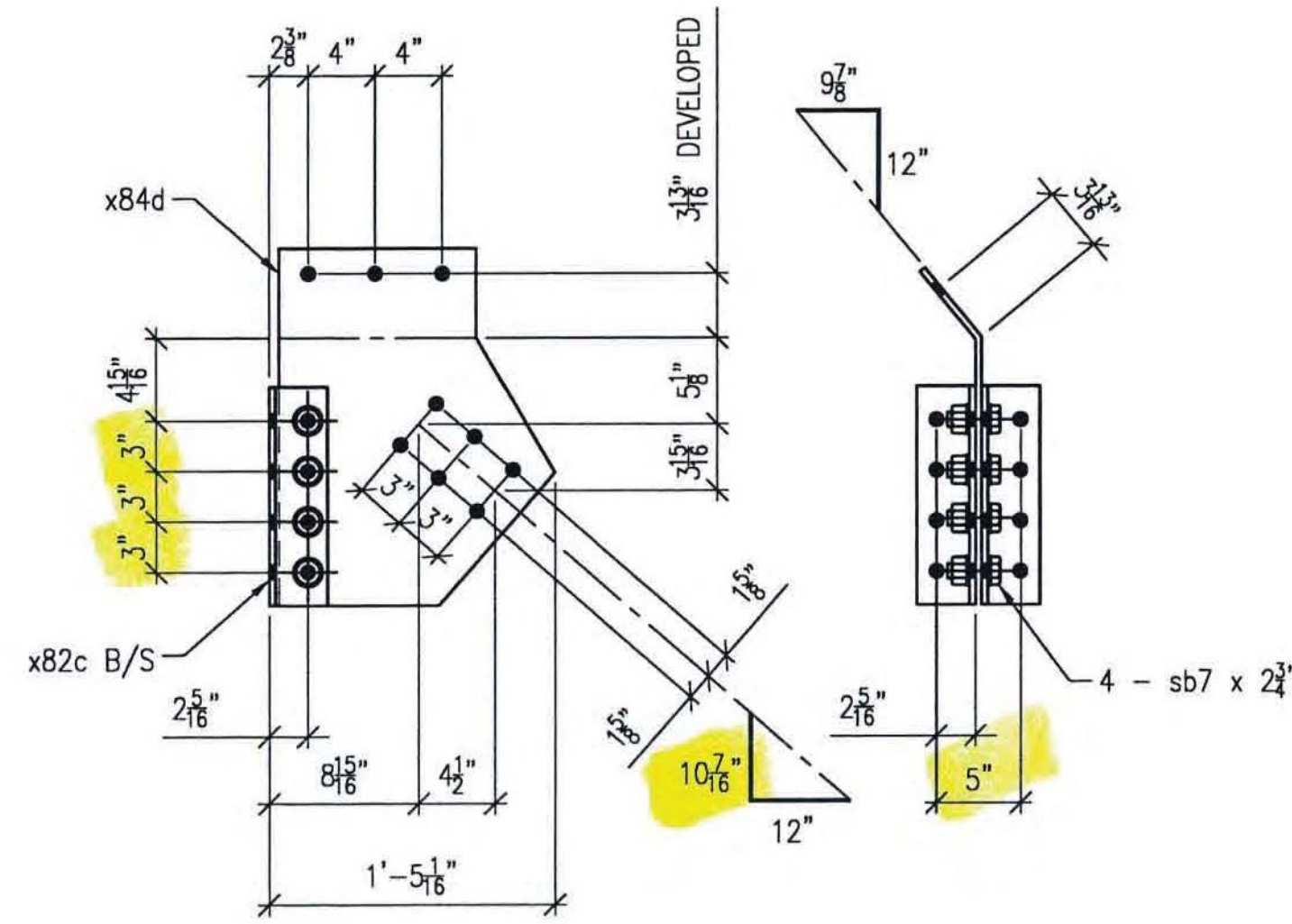
ONE REQ'D ~ Mk. M83B

LIFTING WEIGHT  
? lbs



ONE REQ'D ~ Mk. M83C

LIFTING WEIGHT  
? lbs



ONE REQ'D ~ Mk. M83D

LIFTING WEIGHT  
? lbs

- NO EXCEPTION TAKEN
- REJECTED
- MAKE CORRECTIONS NOTED
- REVISE AND RESUBMIT
- SUBMIT SPECIFIED ITEM

CHECKING IS ONLY FOR GENERAL CONFORMANCE WITH THE DESIGN CONCEPT OF THE PROJECT AND GENERAL COMPLIANCE WITH THE INFORMATION GIVEN IN THE CONTRACT DOCUMENTS. ANY ACTION SHOWN IS SUBJECT TO THE REQUIREMENTS OF THE PLANS AND SPECIFICATIONS. CONTRACTOR IS RESPONSIBLE FOR DIMENSIONS WHICH SHALL BE CONFIRMED AND CORRELATED AT THE JOB SITE; FABRICATION PROCESSES AND TECHNIQUES OF CONSTRUCTION; COORDINATION OF HIS WORK WITH THAT OF ALL OTHER TRADES AND THE SATISFACTORY PERFORMANCE OF THE WORK.

DATE 5/9/12 BY CHA PRA/D

| BILL OF MATERIALS |     |              |           |         |       |                 |        |                                 |         |          |        |         |
|-------------------|-----|--------------|-----------|---------|-------|-----------------|--------|---------------------------------|---------|----------|--------|---------|
| SHOP BILL         |     |              |           |         |       |                 |        | MATERIAL ASTM A709-50 T2 U.N.O. |         |          |        |         |
| LINE              | SEQ | SHIPPING PCS | ASS'Y PCS | MARK    | SHAPE | DESCRIPTION     | LENGTH |                                 | REMARKS | MATERIAL | WEIGHT | HEAT NO |
|                   |     |              |           |         |       |                 | ft     | in                              |         |          |        |         |
| 1                 |     |              |           |         |       |                 |        |                                 |         |          |        |         |
| 2                 | ONE |              |           | M83A    |       | GUSSET ASS'Y    |        |                                 |         |          |        |         |
| 3                 |     | ONE          |           | x84a    | PL    | 3/8 x 18 1/4    | 1      | 9 1/4                           | BENT    |          |        |         |
| 4                 |     | 2            |           | x82b    | L     | 3 1/2x3 1/2x3/8 | 1      | 1                               | DRILLED |          |        |         |
| 5                 |     | 4            |           | sb7-275 | BOLT  | 7/8 #           | 2      | 3/4                             | 1wd/2wr | A25      |        |         |
| 6                 |     |              |           |         |       |                 |        |                                 |         |          |        |         |
| 7                 |     |              |           |         |       |                 |        |                                 |         |          |        |         |
| 8                 | ONE |              |           | M83B    |       | GUSSET ASS'Y    |        |                                 |         |          |        |         |
| 9                 |     | ONE          |           | x84b    | PL    | 3/8 x 18 1/4    | 1      | 9 1/4                           | BENT    |          |        |         |
| 10                |     | 2            |           | x82b    | L     | 3 1/2x3 1/2x3/8 | 1      | 1                               | DRILLED |          |        |         |
| 11                |     | 4            |           | sb7-275 | BOLT  | 7/8 #           | 2      | 3/4                             | 1wd/2wr | A25      |        |         |
| 12                |     |              |           |         |       |                 |        |                                 |         |          |        |         |
| 13                |     |              |           |         |       |                 |        |                                 |         |          |        |         |
| 14                |     |              |           |         |       |                 |        |                                 |         |          |        |         |
| 15                | ONE |              |           | M83C    |       | GUSSET ASS'Y    |        |                                 |         |          |        |         |
| 16                |     | ONE          |           | x84c    | PL    | 3/8 x 16 7/16   | 1      | 9 1/4                           | BENT    |          |        |         |
| 17                |     | 2            |           | x82c    | L     | 3 1/2x3 1/2x3/8 | 1      | 1                               | DRILLED |          |        |         |
| 18                |     | 4            |           | sb7-275 | BOLT  | 7/8 #           | 2      | 3/4                             | 1wd/2wr | A25      |        |         |
| 19                |     |              |           |         |       |                 |        |                                 |         |          |        |         |
| 20                |     |              |           |         |       |                 |        |                                 |         |          |        |         |
| 21                |     |              |           |         |       |                 |        |                                 |         |          |        |         |
| 22                | ONE |              |           | M83D    |       | GUSSET ASS'Y    |        |                                 |         |          |        |         |
| 23                |     | ONE          |           | x84d    | PL    | 3/8 x 16 7/16   | 1      | 9 1/4                           | BENT    |          |        |         |
| 24                |     | 2            |           | x82c    | L     | 3 1/2x3 1/2x3/8 | 1      | 1                               | DRILLED |          |        |         |
| 25                |     | 4            |           | sb7-275 | BOLT  | 7/8 #           | 2      | 3/4                             | 1wd/2wr | A25      |        |         |

ALL HOLES TO BE PUNCHED U.N.O.

PAINT NOTES:

- ALL ITEMS THIS SHEET TO RECEIVE UPPER STEEL PAINT SYSTEM PER GN1.
- CLEAN AND PRIME BOLTED PARTS PRIOR TO ASSEMBLY.
- PRIMER ONLY, WITHIN 3" FROM ALL OPEN HOLES, (A307) SHIPPING BOLTS AND NUTS OR TO NEAREST EDGE OR PERPENDICULAR SURFACE (WHICHEVER IS LESS) UNLESS SPECIFICALLY NOTED OTHERWISE.
- ALL TORQUED BOLTS TO RECEIVE COMPLETE PAINT SYSTEM NOTED. NO PAINT ON (A307) SHIPPING BOLTS AND NUTS.

NOTES:

- FOR GENERAL NOTES SEE DRAWING GN1.
- ALL BOLTS THIS SHEET TO BE FULLY TORQUED UNLESS NOTED AS (A307) SHIPPING BOLTS.
- INSTALL WASHER UNDER HEAD OF BOLT AS WELL AS NUT. ADDITIONAL WASHER IS NOT REQUIRED FOR (A307) SHIPPING BOLTS.
- ALL HOLES MARKED "X" OR "X\*" ARE TO BE FIELD DRILLED HOLES. DO NOT SHOP DRILL.

LEGEND:

- C = CENTERLINE
- CTR'D = CENTERED
- C/C = CENTER TO CENTER
- FLG = FLANGE
- TOP = TOP
- BTM = BOTTOM
- RDFH = RUNNING DIMENSIONS FROM HERE
- = FIELD BOLTS
- (QUANTITY) DIAMETER x LENGTH
- ◇ = ALTERNATE HOLE DIAMETER
- TYP = TYPICAL
- N/S = NEAR SIDE
- F/S = FAR SIDE
- B/S = BOTH SIDES
- BTS = BOLT TO SHIP
- SHPG BOLT = SHIPPING BOLT
- ◇ = SHIPPING BOLT
- D.O.R. = DIRECTION OF ROLL
- T2 = CHARPY V-NOTCH TESTING REQUIRED
- F2 = FRACTURE CRITICAL MATERIAL
- X = FIELD DRILLED HOLE
- X\* = FIELD DRILLED HOLE

ALL DIMENSIONS HAVE BEEN FIELD VERIFIED  
BY: \_\_\_\_\_ DATE: \_\_\_\_\_

| A  | 04/25/12        | RC              | FOR APPROVAL |
|--|-----------------|-----------------|--------------|
| NO.  | DATE            | BY              | REVISION     |
| <b>STS STEEL, INC.</b><br>ENGINEERS * FABRICATORS * ERECTORS<br>PH: (518) 370-2693 FAX: (518) 370-2696 |                 |                 |              |
| DRAWING TITLE  |                 |                 |              |
| <b>UPPER STEEL (SWAY FRAMES @ U2 &amp; U16)</b>  |                 |                 |              |
| PROJECT No. US RT 2 BRIDGE No 24   |                 | FEDERAL AID No. |              |
| ENGINEER : CHA   |                 |                 |              |
| CUSTOMER : Harrison & Burrows Bridge Constructors, Inc.  |                 |                 |              |
| PROJECT : RICHMOND, VT - TRUSS BRIDGE REHAB  |                 |                 |              |
| RICHMOND, VT   |                 |                 |              |
| HOLES: 15/16" U.N.O.   | PAINT: PER SPEC | DATE: 03/01/12  |              |
| BOLTS: A325 U.N.O.   | DR.BY: RC       | JOB NO. 1156    |              |
| WELDS: AWS D1.5  | CHK.BY: SG      | DWG NO. 83      |              |