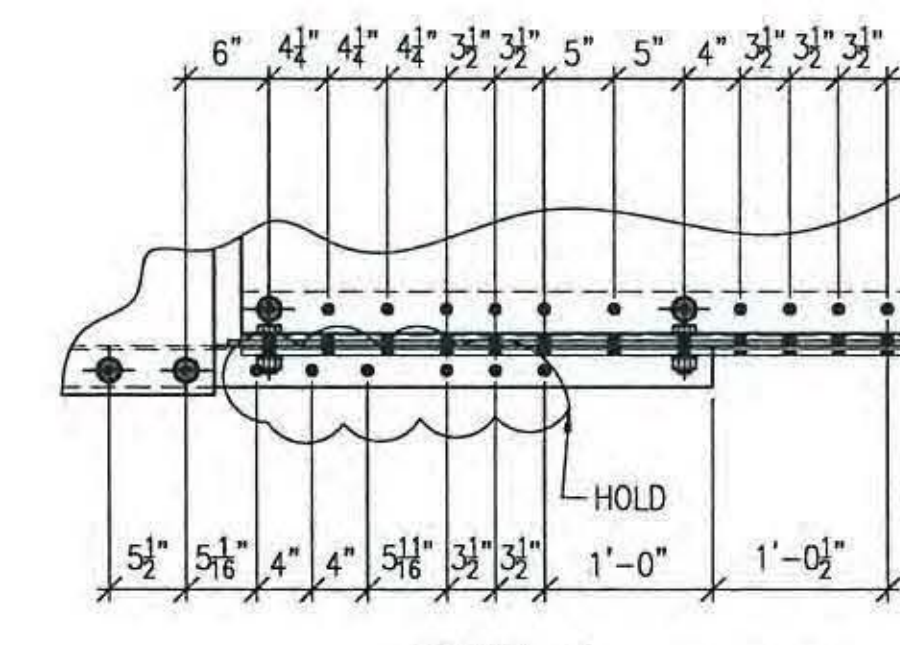


NO EXCEPTION TAKEN
 REJECTED
 MAKE CORRECTIONS NOTED
 REVISE AND RESUBMIT
 SUBMIT SPECIFIED ITEM

CHECKING IS ONLY FOR GENERAL CONFORMANCE WITH THE DESIGN CONCEPT OF THE PROJECT AND GENERAL COMPLIANCE WITH THE INFORMATION GIVEN IN THE CONTRACT DOCUMENTS. ANY ACTION SHOWN IS SUBJECT TO THE REQUIREMENTS OF THE PLANS AND SPECIFICATIONS. CONTRACTOR IS RESPONSIBLE FOR DIMENSIONS WHICH SHALL BE CONFIRMED AND CORRELATED AT THE JOB SITE; FABRICATION PROCESSES AND TECHNIQUES OF CONSTRUCTION; COORDINATION OF HIS WORK WITH THAT OF ALL OTHER TRADES AND THE SATISFACTORY PERFORMANCE OF THE WORK.

DATE 4/12/12 BY CHA



PAINT NOTES:

- ALL ITEMS THIS SHEET TO RECEIVE UPPER STEEL PAINT SYSTEM PER GN1.
- CLEAN AND PRIME BOLTED PARTS PRIOR TO ASSEMBLY.
- PRIMER ONLY, WITHIN 3" FROM ALL OPEN HOLES, (A307) SHIPPING BOLTS AND NUTS OR TO NEAREST EDGE OR PERPENDICULAR SURFACE (WHICHEVER IS LESS) UNLESS SPECIFICALLY NOTED OTHERWISE.
- ALL TORQUED BOLTS TO RECEIVE COMPLETE PAINT SYSTEM NOTED. NO PAINT ON (A307) SHIPPING BOLTS AND NUTS.

NOTES:

- FOR GENERAL NOTES SEE DRAWING GN1.
- ALL BOLTS THIS SHEET TO BE FULLY TORQUED UNLESS NOTED AS (A307) SHIPPING BOLTS.
- INSTALL WASHER UNDER HEAD OF BOLT AS WELL AS NUT. ADDITIONAL WASHER IS NOT REQUIRED FOR (A307) SHIPPING BOLTS.
- ALL HOLES MARKED "X" OR "M" ARE TO BE FIELD DRILLED HOLES. DO NOT SHOP DRILL.

BILL OF MATERIALS

LINE	SEQ	SHIPPING ENDS	ASSEMBLY	MARK	SHAPE	DESCRIPTION	LENGTH		REMARKS	MATERIAL ASTM A709-50 T2 U.N.O.					
							ft	in		MATL GRADE	MATL	WEIGHT	HEAT NO		
1															
2	ONE			M25A		ASSEMBLY									
3	ONE			x32a	C	12 x 20.7	12	5 1/2	FIELD DRILLED						
4	ONE			x32b	C	12 x 20.7	12	5 1/2	FIELD DRILLED						
5															
6	ONE			x20b	L	5 x3 1/2 x 3/8	1	10							
7	ONE			x20f	L	5 x3 1/2 x 3/8	4	0 1/4							
8	ONE			x20g	L	5 x3 1/2 x 3/8	4	0 1/4							
9															
10	ONE			x23c	PL	3/8 x 9 1/2	4	0 1/4							
11	ONE			x23d	PL	3/8 x 9 1/2	4	0 1/4							
12	2			x24c	PL	3/8 x 22 3/8	4	0 1/4							
13	ONE			x25b	PL	3/8 x 22	2	2 3/4							
14	ONE			x25c	PL	3/8 x 22	1	10 5/8							
15	2			x25d	PL	3/8 x 22	2	5 1/2							
16	ONE			x27a	PL	3/8 x 21 3/4	5	7 11/16							
17	ONE			x28a	PL	3/8 x 21 1/4	4	10 3/4							
18	ONE			x29a	PL	3/8 x 49 1/4	5	6 1/4							
19	ONE			x30a	PL	3/8 x 49 1/4	4	10 7/16							
20															
21	4			x25a	PL	5/8 x 26 3/4	2	10							
22															
23	24			sb7-225	BOLT	7/8 #	2	1/4	incl 2w	A325					
24	5			sb7-275	BOLT	7/8 #	2	3/4	incl 2w	A325					
25	15			sb7-25	BOLT	7/8 #	2	1/2	incl 1 w 1 bot w	A325					
26	48			sb7-275	BOLT	7/8 #	2	3/4	incl 1 w 1 bot w	A325					
27	8			jb7-2	BOLT	7/8 #	2		incl 1 w	A307					
28	8			jb7-225	BOLT	7/8 #	2	1/4	incl 1 w	A307					
29	4			jb7-275	BOLT	7/8 #	2	3/4	incl 1 w	A307					
30															

ALL HOLES TO BE PUNCHED U.N.O.
 ALL CHANNEL FLANGES TO BE DRILLED TYP.

LEGEND:

- CL = CENTERLINE
- CTR'D = CENTERED
- C/C = CENTER TO CENTER
- FLG = FLANGE
- TOP = TOP
- BTM = BOTTOM
- RFH = RUNNING DIMENSIONS FROM HERE
- = FIELD BOLTS (QUANTITY) DIAMETER x LENGTH
- ◇ = ALTERNATE HOLE DIAMETER
- TYP = TYPICAL
- N/S = NEAR SIDE
- F/S = FAR SIDE
- B/S = BOTH SIDES
- BTS = BOLT TO SHIP
- △ SHP'G BOLT = SHIPPING BOLT
- ◇ = SHIPPING BOLT
- D.O.R. = DIRECTION OF ROLL
- T2 = CHARPY V-NOTCH TESTING REQUIRED
- F2 = FRACTURE CRITICAL MATERIAL
- X = FIELD DRILLED HOLE
- M = FIELD DRILLED HOLE

ALL DIMENSIONS HAVE BEEN FIELD VERIFIED
 BY: _____ DATE: _____

NO.	DATE	BY	REVISION
1	04/04/12	PG	REVISED TO SUIT BRITEN BOLT SPACING CHANGE AND BOLTS REVISED TO A325 BLACK ISSUED FOR FINAL APPROVAL.
C	03/16/12	RC	HOLE DELETED TO MATCH CONTRACT DRAWINGS
B	03/15/12	RC	NOTES UPDATED AND BOLTS REVISED TO A325 GALV
A	03/02/12	RC	FOR APPROVAL

STS STEEL, INC.
 ENGINEERS • FABRICATORS • ERECTORS
 PH: (518) 370-2693 FAX: (518) 370-2696

DRAWING TITLE
 UPPER STEEL (TS1)

PROJECT No. US RT 2 BRIDGE No 24 FEDERAL AID No. _____
 ENGINEER: CHA
 CUSTOMER: Harrison & Burrows Bridge Constructors, Inc.
 PROJECT: RICHMOND, VT - TRUSS BRIDGE REHAB
 RICHMOND, VT

HOLES: 15/16" U.N.O. PAINT: PER SPEC DATE: 03/01/12
 BOLTS: A325 U.N.O. DRBY: RC JOB NO. 1156
 WELDS: AWS D1.5 CHK.BY: BH DWG NO. 25