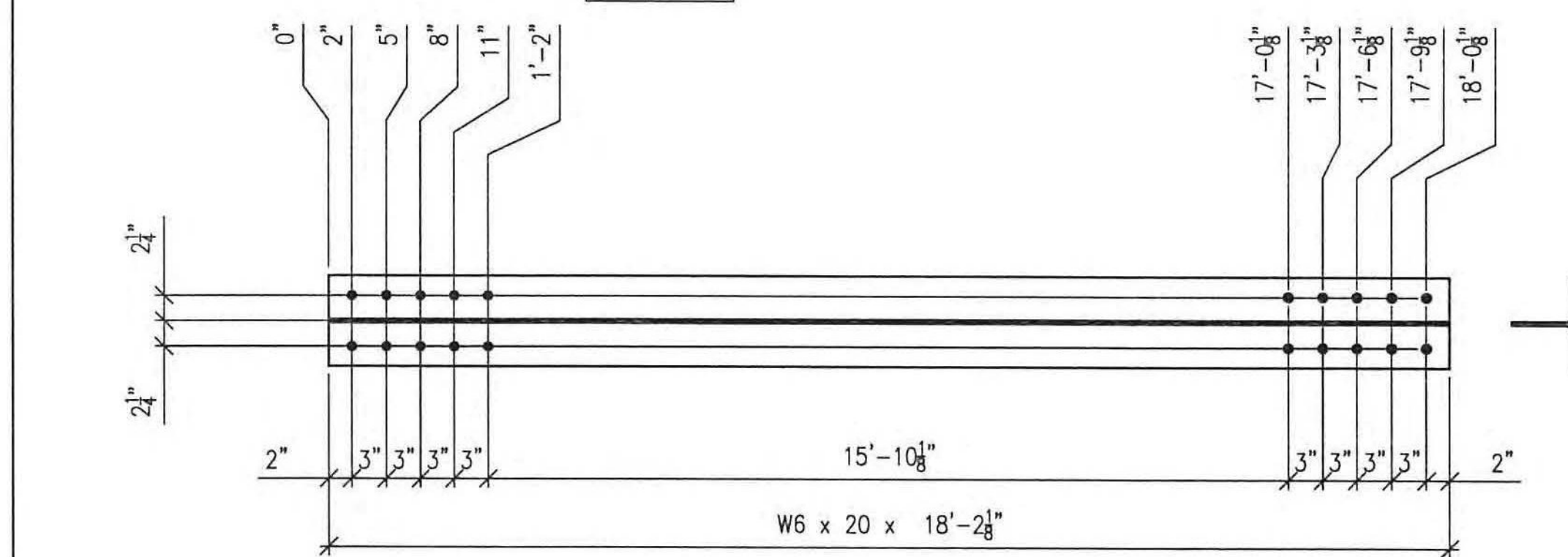


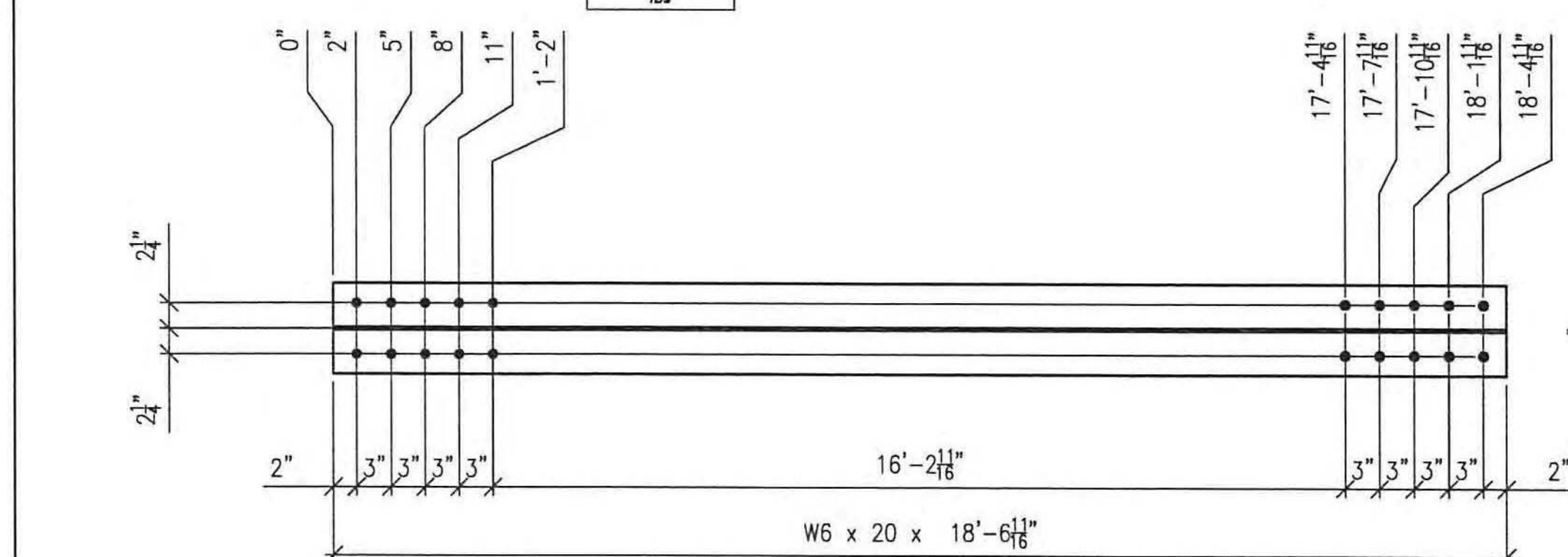
2 REQ'D ~ Mk. M11A

LIFTING WEIGHT
846.3
lbs



2 REQ'D ~ Mk. M11B

LIFTING WEIGHT
363.5
lbs



2 REQ'D ~ Mk. M11C

LIFTING WEIGHT
371.1
lbs

BILL OF MATERIALS													
SHOP BILL							MATERIAL ASTM A709-50 T2 U.N.O.						
LINE	SEQ	SHIPPING PACKS	ASSEMBLY	MARK	SHAPE	DESCRIPTION	LENGTH		REMARKS	MATL GRADE	MATL REMARK	WEIGHT	HEAT NO
							ft	in					
1													
2				M11A	WT	6 x 20	38	2 1/8				1527.1	
3													
4		2		x3a	pl	1/2 x 12	4	1 5/16	BAR LENGTH			165.5	
5													
6		4		"a"	THD	ROD 7/8 dia	1	7	ONLY	F1554 OR 50			
7		16		"b"	NUT	7/8				A325 GALV			
8													
9		4		sb7-25	BOLT	7/8 #		2 1/2		A325 GALV	1in/2in		
10													
11													
12													
13		2		M11B	WT	6 x 20	18	2 1/8				727.1	
14													
15													
16		2		M11C	WT	6 x 20	18	6 11/16				742.3	
17													
18													
19													
20													

ALL HOLES TO BE DRILLED

- NO EXCEPTION TAKEN
- REJECTED
- MAKE CORRECTIONS NOTED
- REVISE AND RESUBMIT
- SUBMIT SPECIFIED ITEM

CHECKING IS ONLY FOR GENERAL CONFORMANCE WITH THE DESIGN CONCEPT OF THE PROJECT AND GENERAL COMPLIANCE WITH THE INFORMATION GIVEN IN THE CONTRACT DOCUMENTS. ANY ACTION SHOWN IS SUBJECT TO THE REQUIREMENTS OF THE PLANS AND SPECIFICATIONS. CONTRACTOR IS RESPONSIBLE FOR DIMENSIONS WHICH SHALL BE CONFIRMED AND CORRELATED AT THE JOB SITE, FABRICATION PROCESSES AND TECHNIQUES OF CONSTRUCTION; COORDINATION OF HIS WORK WITH THAT OF ALL OTHER TRADES AND THE SATISFACTORY PERFORMANCE OF THE WORK.

DATE 3/30/12 BY CHA/PKL/d

- LEGEND:
- C = CENTERLINE
  - CTR'D = CENTERED
  - C/C = CENTER TO CENTER
  - FLG = FLANGE
  - TOP = TOP
  - BTM = BOTTOM
  - RDFH = RUNNING DIMENSIONS FROM HERE
  - FIELD BOLTS (QUANTITY) DIAMETER x LENGTH
  - ◇ = ALTERNATE HOLE DIAMETER
  - TYP = TYPICAL
  - N/S = NEAR SIDE
  - F/S = FAR SIDE
  - B/S = BOTH SIDES
  - BTS = BOLT TO SHIP
  - ◇ = TEMPORARY BOLT FOR SHIPPING
  - D.O.R. = DIRECTION OF ROLL
  - T2 = CHARPY V-NOTCH TESTING REQUIRED
  - F2 = FRACTURE CRITICAL MATERIAL
  - ⊗ = FIELD DRILLED HOLE
  - ⊗ = FIELD DRILLED HOLE

- PAINT NOTES:
- ALL ITEMS THIS SHEET TO RECEIVE FLOOR SYSTEM PAINT SYSTEM PER GN1.
  - CLEAN AND PRIME BOLTED PARTS PRIOR TO ASSEMBLY.
  - PRIMER ONLY, WITHIN 3" FROM ALL OPEN HOLES, "SNUG TIGHT" BOLTS AND NUTS OR TO NEAREST EDGE OR PERPENDICULAR SURFACE (WHICHEVER IS LESS) UNLESS SPECIFICALLY NOTED OTHERWISE.
  - NO PAINT ON "SNUG TIGHT" BOLTS AND NUTS.

- NOTES:
- FOR GENERAL NOTES SEE DRAWING GN1.
  - ALL BOLTS THIS SHEET TO BE SNUG TIGHT ONLY. DO NOT TORQUE.
  - INSTALL WASHER UNDER HEAD OF BOLT AS WELL AS NUT
  - ALL HOLES MARKED "⊗" OR "⊗" ARE TO BE FIELD DRILLED HOLES. DO NOT SHOP DRILL.

ALL DIMENSIONS HAVE BEEN FIELD VERIFIED  
BY: \_\_\_\_\_ DATE: \_\_\_\_\_

1	03/28/12	RC	ISSUED FOR FINAL APPROVAL
B	03/15/12	RC	NOTES UPDATED AND BOLTS REVISED TO A325 GALV
A	03/06/12	RC	FOR APPROVAL
NO.	DATE	BY	REVISION
<b>STS STEEL, INC.</b> ENGINEERS * FABRICATORS * ERECTORS PH: (518) 370-2693 FAX: (518) 370-2696			
DRAWING TITLE <b>FLOOR SYSTEM (BOTTOM LATERALS)</b>			
PROJECT No. US RT 2 BRIDGE No 24 FEDERAL AID No.			
ENGINEER : CHA			
CUSTOMER : Harrison & Burrows Bridge Constructors, Inc.			
PROJECT : RICHMOND, VT - TRUSS BRIDGE REHAB			
RICHMOND, VT			
HOLDS:	15/16" U.N.O.	PAINT:	PER SPEC
BOLTS:	A325 GALV U.N.O.	DR.BY:	RC
WELDS:	AWS D1.5	CHK.BY:	KC
		DATE:	03/01/12
		JOB NO.	1156
		DWG NO.	11