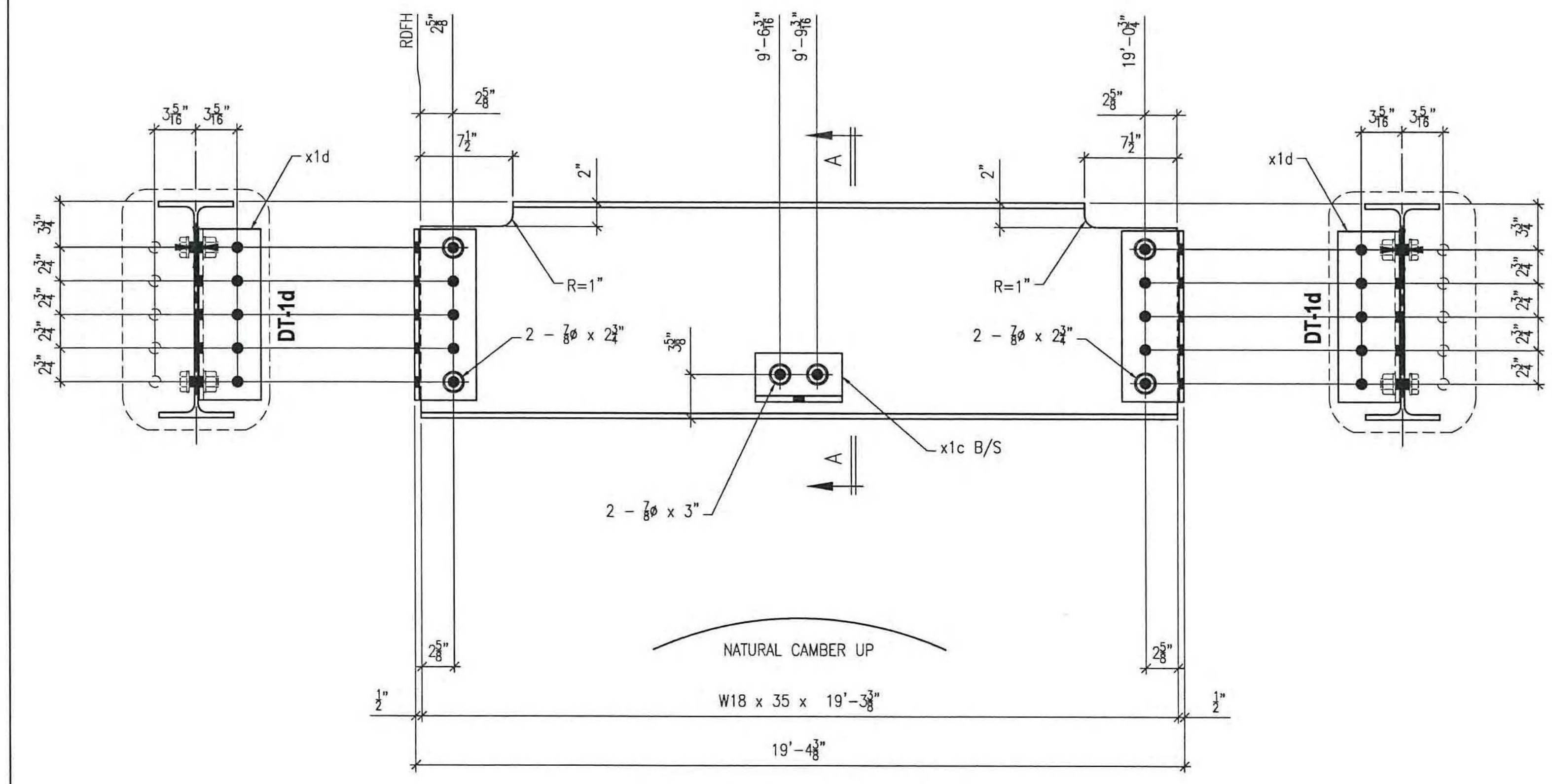


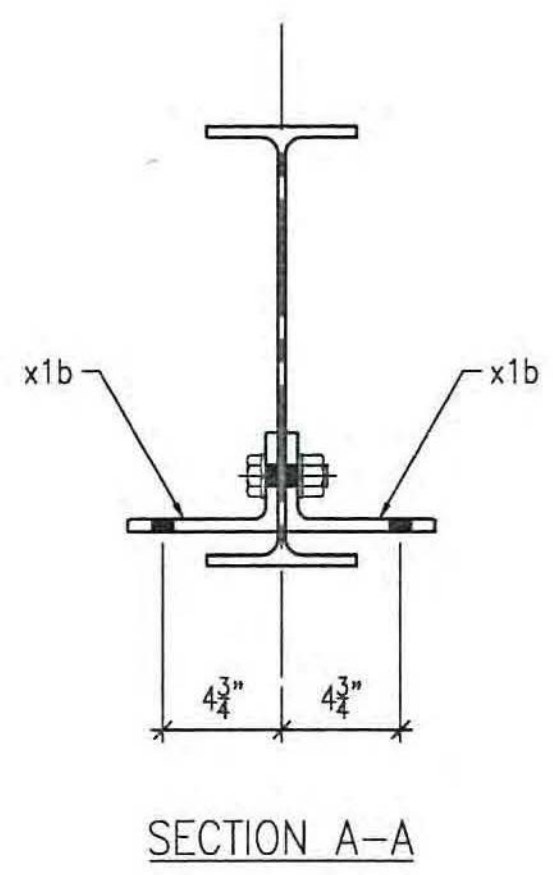
2 REQ'D ~ Mk. S6A (S3)

| LIFTING WEIGHT | |
|----------------|-----|
| 739.9 | lbs |



2 REQ'D ~ Mk. S6B (S6)

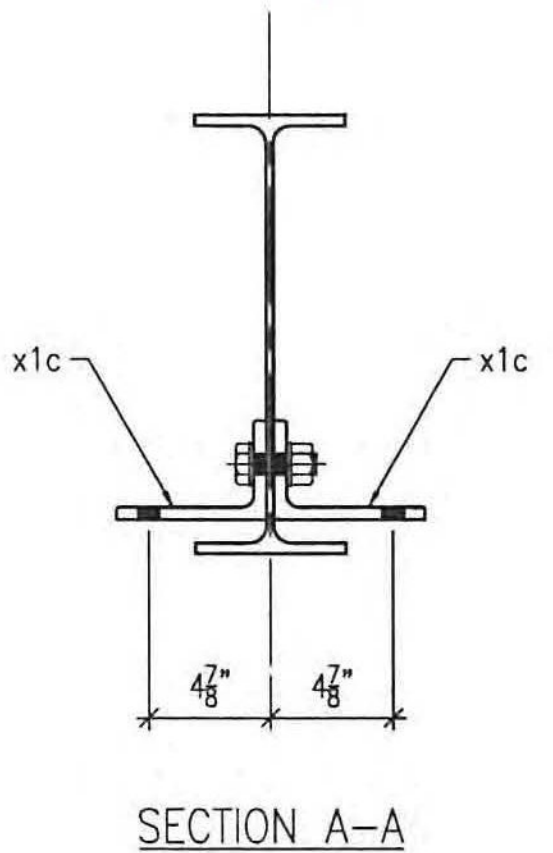
| LIFTING WEIGHT | |
|----------------|-----|
| 722.4 | lbs |



- NO EXCEPTION TAKEN
- REJECTED
- MAKE CORRECTIONS NOTED
- REVISE AND RESUBMIT
- SUBMIT SPECIFIED ITEM

CHECKING IS ONLY FOR GENERAL CONFORMANCE WITH THE DESIGN CONCEPT OF THE PROJECT AND GENERAL COMPLIANCE WITH THE INFORMATION GIVEN IN THE CONTRACT DOCUMENTS. ANY ACTION SHOWN IS SUBJECT TO THE REQUIREMENTS OF THE PLANS AND SPECIFICATIONS. CONTRACTOR IS RESPONSIBLE FOR DIMENSIONS WHICH SHALL BE CONFIRMED AND CORRELATED AT THE JOB SITE; FABRICATION PROCESSES AND TECHNIQUES OF CONSTRUCTION; COORDINATION OF HIS WORK WITH THAT OF ALL OTHER TRADES AND THE SATISFACTORY PERFORMANCE OF THE WORK.

DATE 3/30/12 BY CHA



PAINT NOTES:

- ALL ITEMS THIS SHEET TO RECEIVE FLOOR SYSTEM PAINT SYSTEM PER GN1.
- CLEAN AND PRIME BOLTED PARTS PRIOR TO ASSEMBLY.
- PRIMER ONLY, WITHIN 3" FROM ALL OPEN HOLES, "SNUG TIGHT" BOLTS AND NUTS OR TO NEAREST EDGE OR PERPENDICULAR SURFACE (WHICHEVER IS LESS) UNLESS SPECIFICALLY NOTED OTHERWISE.
- NO PAINT ON "SNUG TIGHT" BOLTS AND NUTS.

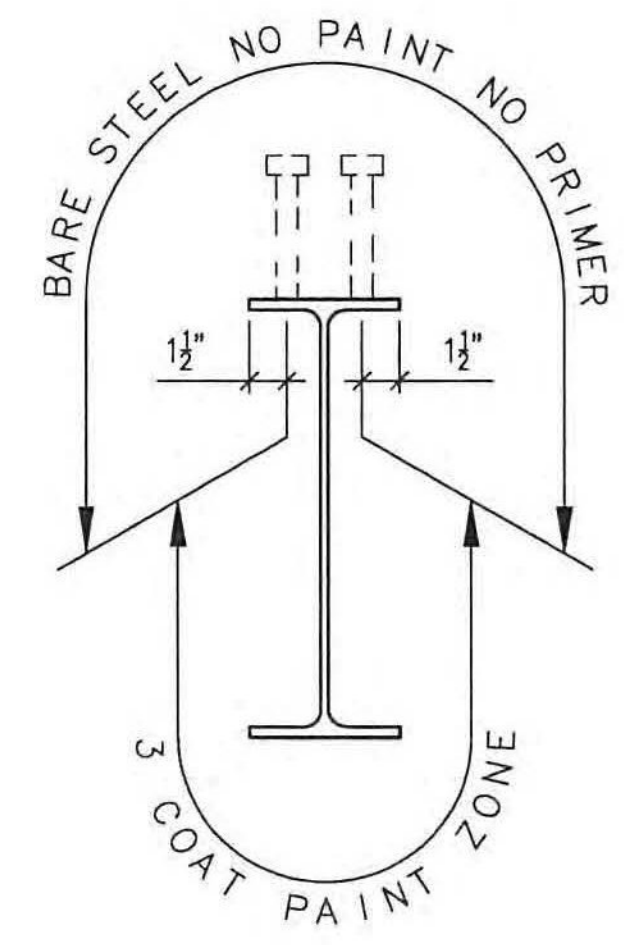
NOTES:

- FOR GENERAL NOTES SEE DRAWING GN1.
- ALL BOLTS THIS SHEET TO BE SNUG TIGHT ONLY. DO NOT TORQUE.
- INSTALL WASHER UNDER HEAD OF BOLT AS WELL AS NUT
- ALL HOLES MARKED "X" OR "X" ARE TO BE FIELD DRILLED HOLES. DO NOT SHOP DRILL.

BILL OF MATERIALS

| LINE | SEC | SHIPPING PICS | ASSEMBLY PICS | MARK | SHAPE | DESCRIPTION | LENGTH | | REMARKS | MATERIAL ASTM A709-50 T2 U.N.O. | | | |
|------|-----|---------------|---------------|---------|-------|-------------|--------|-------|---------|---------------------------------|-------------|--------|---------|
| | | | | | | | ft | in | | MATL GRADE | MATL REMARK | WEIGHT | HEAT NO |
| 1 | 2 | | | S6A | W | 18 x 35 | 19 | 3 3/8 | | | | 1384.7 | |
| 2 | | | | | | | | | | | | | |
| 3 | | | | x1d | L | 5 x 5 x 3/8 | 1 | 2 | | | | 57.4 | |
| 4 | | | | | | | | | | | | | |
| 5 | | | | x1b | L | 6 x 4 x 1/2 | | 7 | | | | 37.8 | |
| 6 | | | | | | | | | | | | | |
| 7 | | | | sb7-275 | BOLT | 7/8 # | | 2 3/4 | 1wd/2m | A325 GALV | | | |
| 8 | | | | sb7-3 | BOLT | 7/8 # | | 3 | 1wd/2m | A325 GALV | | | |
| 9 | | | | | | | | | | | 100K lbs | 1479.9 | |
| 10 | | | | | | | | | | | | | |
| 11 | | | | | | | | | | | | | |
| 12 | 2 | | | S6B | W | 18 x 35 | 19 | 3 3/8 | | | | 1349.7 | |
| 13 | | | | | | | | | | | | | |
| 14 | | | | x1d | L | 5 x 5 x 3/8 | 1 | 2 | | | | 57.4 | |
| 15 | | | | | | | | | | | | | |
| 16 | | | | x1c | L | 6 x 4 x 1/2 | | 7 | | | | 37.8 | |
| 17 | | | | | | | | | | | | | |
| 18 | | | | sb7-275 | BOLT | 7/8 # | | 2 3/4 | 1wd/2m | A325 GALV | | | |
| 19 | | | | sb7-3 | BOLT | 7/8 # | | 3 | 1wd/2m | A325 GALV | | | |
| 20 | | | | | | | | | | | 100K lbs | 1444.9 | |

ALL HOLES TO BE DRILLED



- LEGEND:
- ⊕ = CENTERLINE
 - CTR'D = CENTERED
 - C/C = CENTER TO CENTER
 - FLG = FLANGE
 - TOP = TOP
 - BTM = BOTTOM
 - RDFH = RUNNING DIMENSIONS FROM HERE
 - ↔ = FIELD BOLTS (QUANTITY) DIAMETER x LENGTH
 - ⊕ = ALTERNATE HOLE DIAMETER
 - TYP = TYPICAL
 - N/S = NEAR SIDE
 - F/S = FAR SIDE
 - B/S = BOTH SIDES
 - BTS = BOLT TO SHIP
 - ⊕ = TEMPORARY BOLT FOR SHIPPING
 - = DIRECTION OF ROLL
 - T2 = CHARPY V-NOTCH TESTING REQUIRED
 - F2 = FRACTURE CRITICAL MATERIAL
 - ⊗ = FIELD DRILLED HOLE
 - ⊗ = FIELD DRILLED HOLE

ALL DIMENSIONS HAVE BEEN ACCEPTED/FIELD VERIFIED BY: _____ DATE: _____

| NO. | DATE | BY | REVISION |
|-----|----------|-------|--|
| 1 | 03/28/12 | RC | ISSUED FOR FINAL APPROVAL |
| F | 03/15/12 | RC | NOTES UPDATED AND BOLTS REVISED TO A325 GALV |
| D | 03/06/12 | SG/RC | REVISED PER NEW CONTRACT DWGS ISSUED FOR APP'L |

STS STEEL, INC.
ENGINEERS * FABRICATORS * ERECTORS
PH: (518) 370-2693 FAX: (518) 370-2696

DRAWING TITLE
FLOOR SYSTEM (STRINGERS)

PROJECT No. US RT 2 BRIDGE No 24 FEDERAL AID No. _____
ENGINEER : CHA
CUSTOMER : Harrison & Burrows Bridge Constructors, Inc.
PROJECT : RICHMOND, VT - TRUSS BRIDGE REHAB
RICHMOND, VT

HOLES: 15/16" U.N.O. PAINT PER SPEC DATE: 09/15/11
BOLTS: A325 GALV U.N.O. DRWN.BY: RC JOB NO. 1156
WELDS: AWS D1.5 CHK.BY: SG DWG NO. 6