

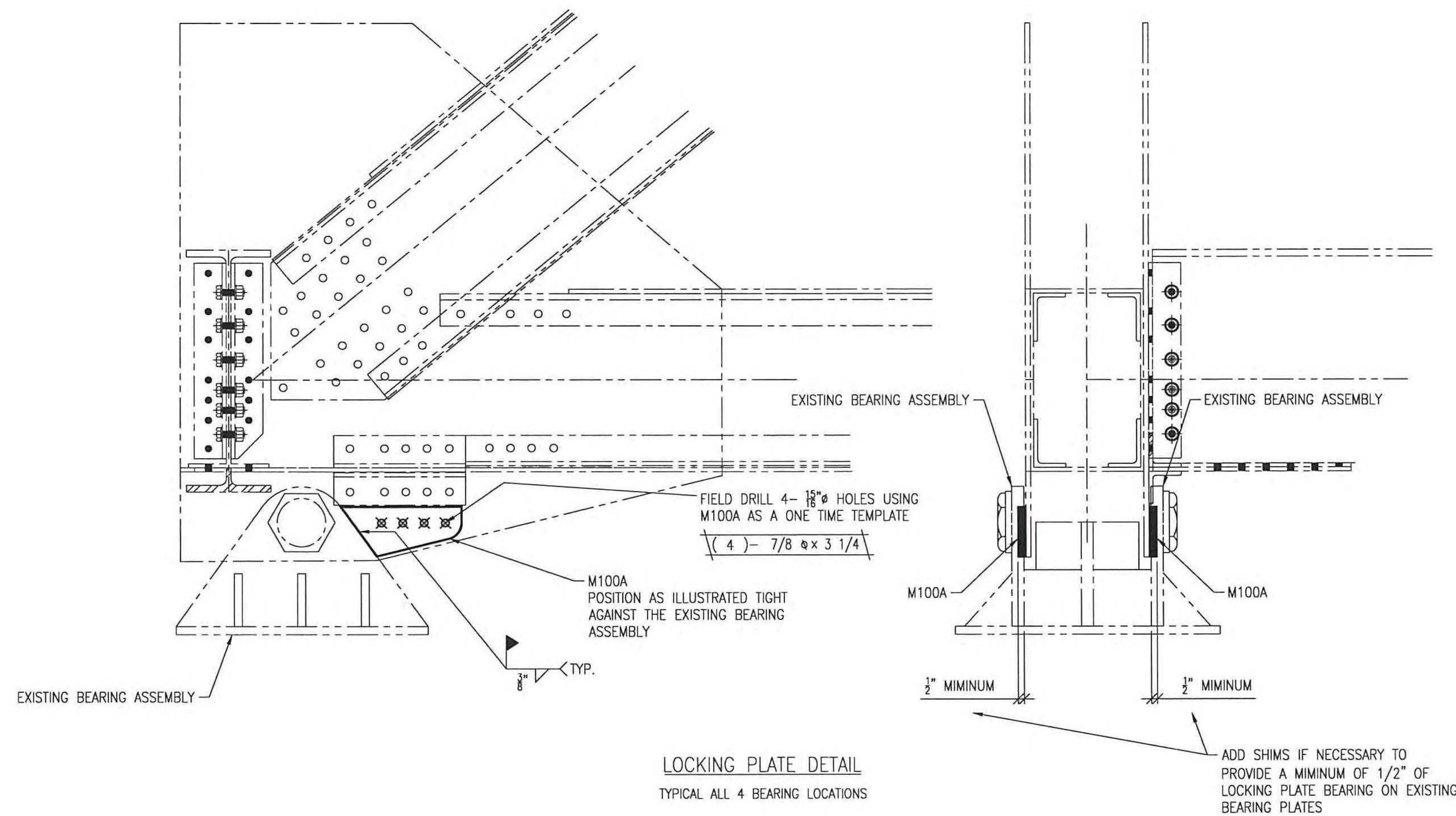
ASTM A325 TYPE 1 GALV FIELD BOLT LIST ~ 7/8" Ø BOLTS						
REV. LINE	QUANTITY	DIA.	LENGTH	REMARKS	WEIGHT	
1						
2	32	7/8	3 1/4"	C/W NUT & 2 WA		
3						

ALL QUANTITIES ARE EXACT - ADD 5 % AND 10 TO EACH LENGTH

- NO EXCEPTION TAKEN  
 REJECTED  
 MAKE CORRECTIONS NOTED  
 REVISE AND RESUBMIT  
 SUBMIT SPECIFIED ITEM

CHECKING IS ONLY FOR GENERAL CONFORMANCE WITH THE DESIGN CONCEPT OF THE PROJECT AND GENERAL COMPLIANCE WITH THE INFORMATION GIVEN IN THE CONTRACT DOCUMENTS. ANY ACTION SHOWN IS SUBJECT TO THE REQUIREMENTS OF THE PLANS AND SPECIFICATIONS. CONTRACTOR IS RESPONSIBLE FOR DIMENSIONS WHICH SHALL BE CONFIRMED AND CORRELATED AT THE JOB SITE; FABRICATION PROCESSES AND TECHNIQUES OF CONSTRUCTION; COORDINATION OF HIS WORK WITH THAT OF ALL OTHER TRADES AND THE SATISFACTORY PERFORMANCE OF THE WORK.

DATE 1/3/2013 BY CHA BJK



- LEGEND:**
- CL = CENTERLINE
  - CTR'D = CENTERED
  - C/C = CENTER TO CENTER
  - FLG = FLANGE
  - TOP = TOP
  - BTM = BOTTOM
  - RDFH = RUNNING DIMENSIONS FROM HERE
  - FIELD BOLTS = FIELD BOLTS (QUANTITY) DIAMETER x LENGTH
  - ◇ = ALTERNATE HOLE DIAMETER
  - TYP = TYPICAL
  - N/S = NEAR SIDE
  - F/S = FAR SIDE
  - B/S = BOTH SIDES
  - BTS = BOLT TO SHIP
  - SHP'G BOLT = SHIPPING BOLT
  - ◇ = SHIPPING BOLT
  - D.O.R. = DIRECTION OF ROLL
  - T2 = CHARPY V-NOTCH TESTING REQUIRED
  - F2 = FRACTURE CRITICAL MATERIAL
  - ⊗ = FIELD DRILLED HOLE
  - ⊗ = FIELD DRILLED HOLE

ALL DIMENSIONS HAVE BEEN FIELD VERIFIED  
 BY: \_\_\_\_\_ DATE: \_\_\_\_\_

- NOTES:
- FOR GENERAL NOTES SEE DRAWING GN1.
  - ALL HOLES MARKED "⊗" OR "⊗" ARE TO BE FIELD DRILLED HOLES.
  - INSTALL WASHER UNDER HEAD OF BOLT AS WELL AS NUT.

NO.	DATE	BY	REVISION
A	12/21/12	RC	FOR APPROVAL

**STS STEEL, INC.**  
 ENGINEERS \* FABRICATORS \* ERECTORS  
 PH: (518) 370-2693 FAX: (518) 370-2696

DRAWING TITLE  
**TRUSS REPAIR (LOCKING PLATES)**

PROJECT No. US RT 2 BRIDGE No 24 FEDERAL AID No.

ENGINEER : CHA

CUSTOMER : Harrison & Burrows Bridge Constructors, Inc.

PROJECT : RICHMOND, VT - TRUSS BRIDGE REHAB  
 RICHMOND, VT

HOLES: 15/16" U.N.O. PAINT: PER SPEC DATE: 12/19/12

BOLTS: A325 U.N.O. DR.BY: RC JOB NO. 1156

WELDS: AWS D1.5 CHK.BY: SG DWG NO. E11

