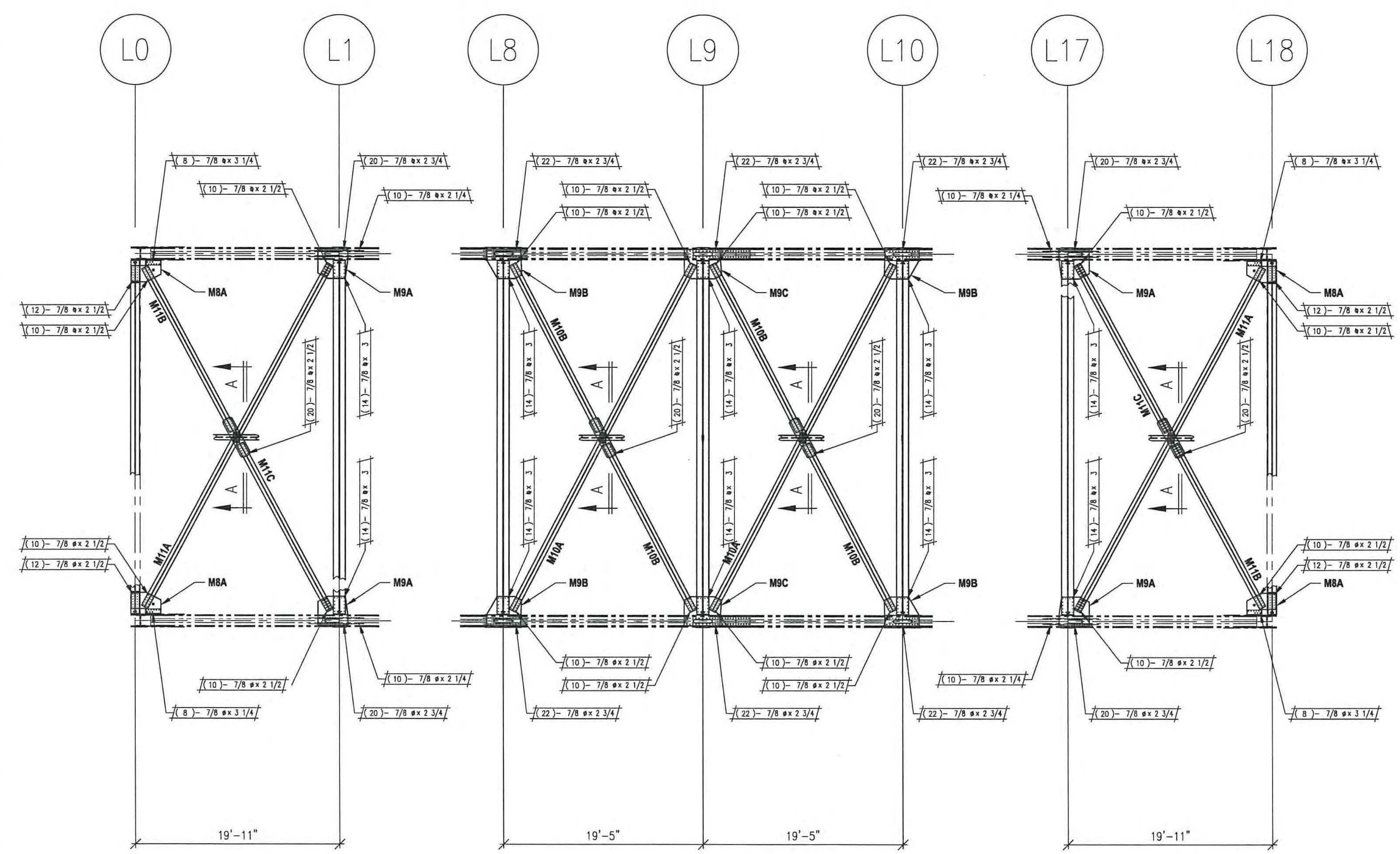
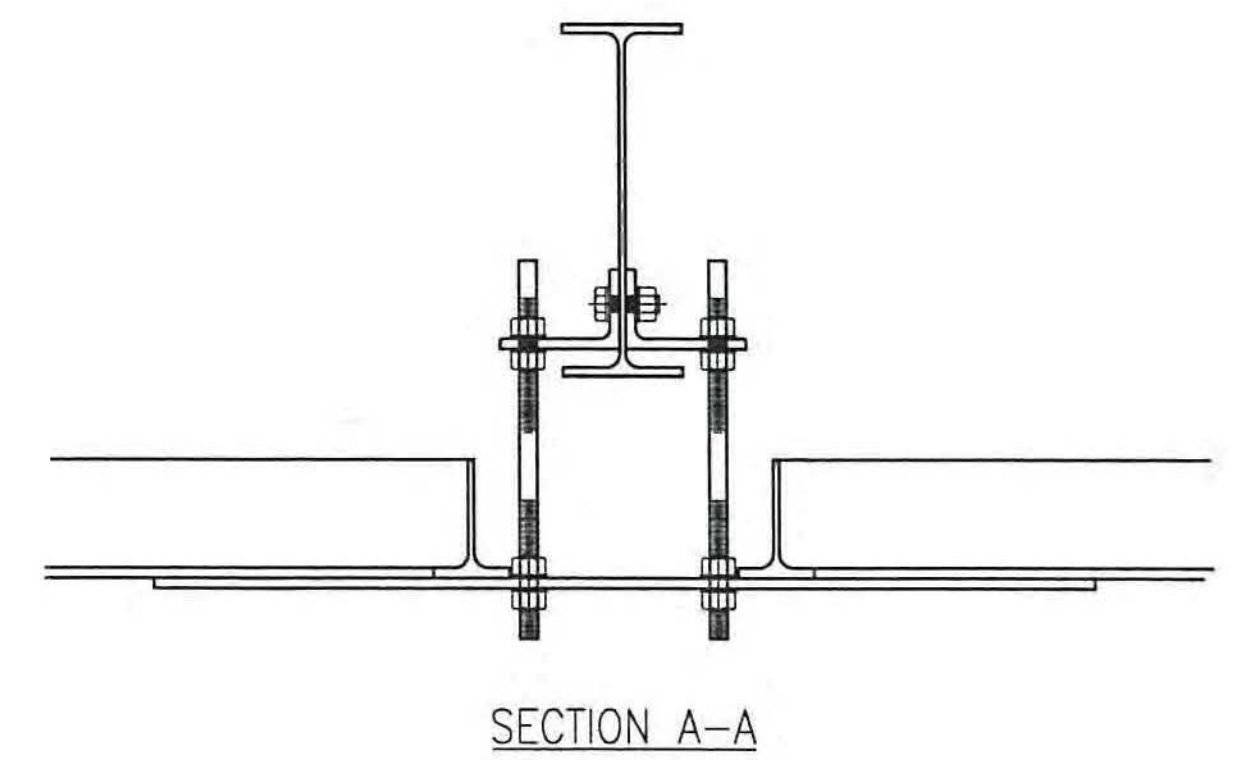


ASTM A325 TYPE 1 GALV FIELD BOLT LIST ~ 7/8" BOLTS					
REV. LINE	QUANTITY	DIA.	LENGTH	REMARKS	WEIGHT
1	40	7/8	2 1/4	C/W NUT & 2 WA	
2	288	7/8	2 1/2	C/W NUT & 2 WA	
3	212	7/8	2 3/4	C/W NUT & 2 WA	
4	140	7/8	3"	C/W NUT & 2 WA	
5	32	7/8	3 1/4	C/W NUT & 2 WA	
6					
7					
8					
9					
10					

ALL QUANTITIES ARE EXACT - ADD 5% AND 10 TO EACH LENGTH



BOTTOM LATERAL ENLARGED PLAN



- LEGEND:**
- ⊕ = CENTERLINE
 - CTR'D = CENTERED
 - C/C = CENTER TO CENTER
 - FLG = FLANGE
 - TOP = TOP
 - BTM = BOTTOM
 - RDFH = RUNNING DIMENSIONS FROM HERE
 - ⊕ = FIELD BOLTS (QUANTITY) DIAMETER x LENGTH
 - ⊕ = ALTERNATE HOLE DIAMETER
 - TYP = TYPICAL
 - N/S = NEAR SIDE
 - F/S = FAR SIDE
 - B/S = BOTH SIDES
 - BTS = BOLT TO SHIP
 - ⊕ = TEMPORARY BOLT FOR SHIPPING
 - D.O.R. = DIRECTION OF ROLL
 - T2 = CHARPY V-NOTCH TESTING REQUIRED
 - F2 = FRACTURE CRITICAL MATERIAL
 - ⊕ = FIELD DRILLED HOLE
 - ⊕ = FIELD DRILLED HOLE

- NO EXCEPTION TAKEN MAKE CORRECTIONS NOTED
- REJECTED REVISE AND RESUBMIT
- SUBMIT SPECIFIED ITEM

CHECKING IS ONLY FOR GENERAL CONFORMANCE WITH THE DESIGN CONCEPT OF THE PROJECT AND GENERAL COMPLIANCE WITH THE INFORMATION GIVEN IN THE CONTRACT DOCUMENTS. ANY ACTION SHOWN IS SUBJECT TO THE REQUIREMENTS OF THE PLANS AND SPECIFICATIONS. CONTRACTOR IS RESPONSIBLE FOR DIMENSIONS WHICH SHALL BE CONFIRMED AND CORRELATED AT THE JOB SITE; FABRICATION PROCESSES AND TECHNIQUES OF CONSTRUCTION; COORDINATION OF HIS WORK WITH THAT OF ALL OTHER TRADES AND THE SATISFACTORY PERFORMANCE OF THE WORK.

DATE 3/30/12 BY CHA/PWL

ALL DIMENSIONS HAVE BEEN FIELD VERIFIED BY: _____ DATE: _____

NO.	DATE	BY	REVISION
1	03/28/12	RC	ISSUED FOR FINAL APPROVAL
C	03/19/12	RC	BOLT HOLD REMOVED
B	03/15/12	RC	BOLTS REVISED TO A325 GALV
A	03/06/12	RC	FOR APPROVAL

STS STEEL, INC.
ENGINEERS * FABRICATORS * ERECTORS
PH: (518) 370-2693 FAX: (518) 370-2696

DRAWING TITLE: **FLOOR SYSTEM (BOT LATERAL ENLARGED PLAN)**

PROJECT No. US RT 2 BRIDGE No 24 FEDERAL AID No. _____

ENGINEER: CHA

CUSTOMER: Harrison & Burrows Bridge Constructors, Inc.

PROJECT: RICHMOND, VT - TRUSS BRIDGE REHAB
RICHMOND, VT

HOLES: 15/16" U.N.O. PAINT PER SPEC DATE: 03/05/12

BOLTS: A325 GALV U.N.O. DRWN BY: RC JOB NO. 1156

WELDS: AWS D1.5 CHK BY: KC DWG NO. E2C