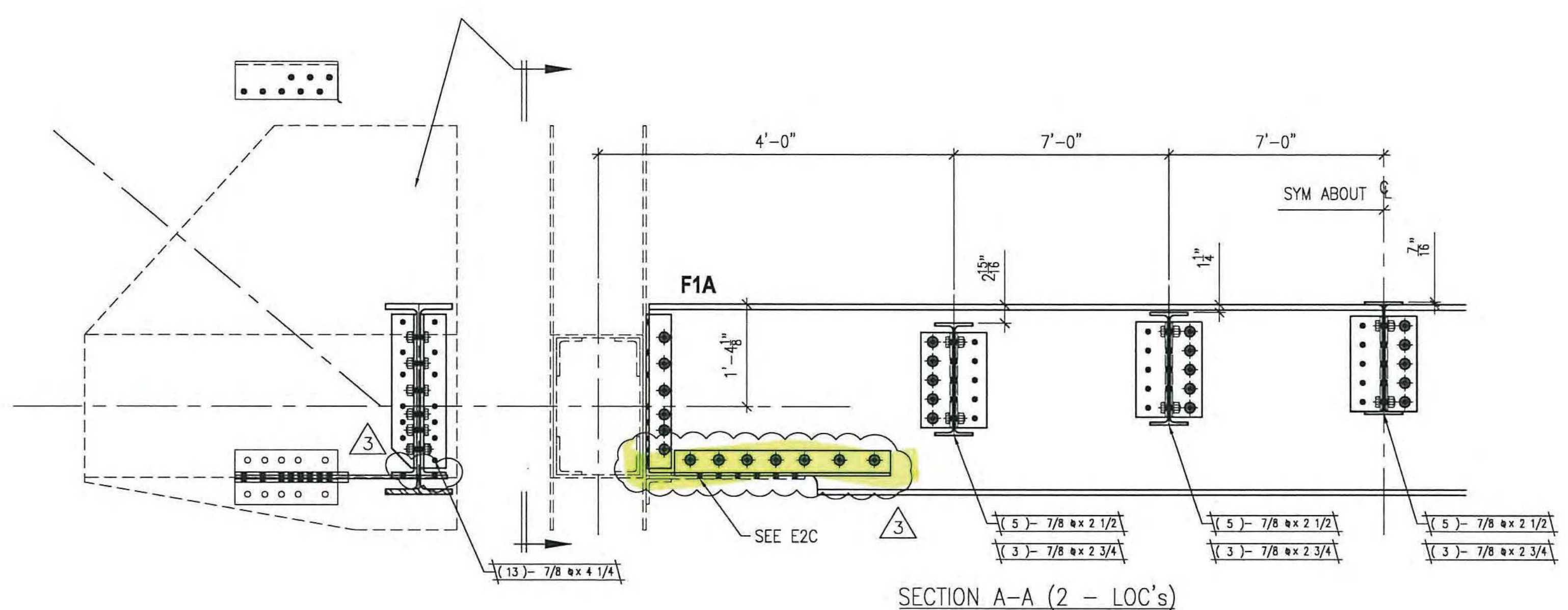
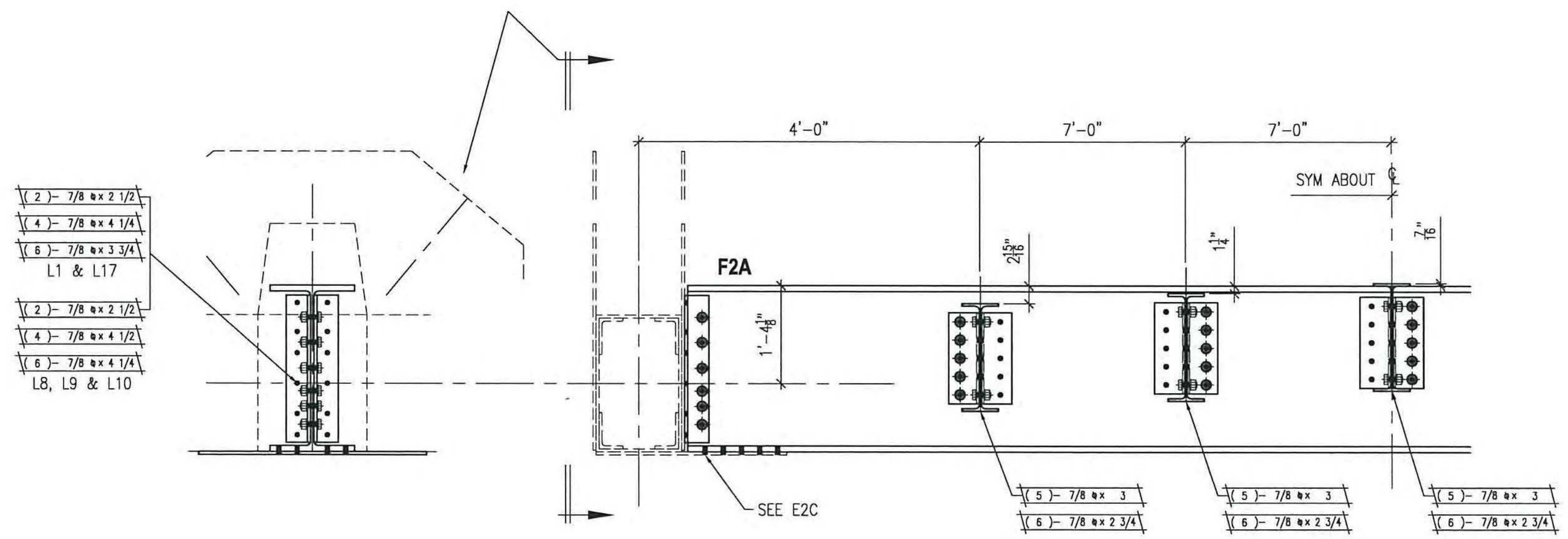


ASTM A325 TYPE 1 GALV FIELD BOLT LIST ~ 7/8" BOLTS					
REV. LINE	QUANTITY	DIA.	LENGTH	REMARKS	WEIGHT
1					
2	118	7/8	2 1/2"	C/W NUT & 2 WA	
3	540	7/8	2 3/4"	C/W NUT & 2 WA	
4	425	7/8	3"	C/W NUT & 2 WA	
5					
6	48	7/8	3 1/2"	C/W NUT & 2 WA	
7	104	7/8	3 3/4"	C/W NUT & 2 WA	
8					
9	184	7/8	4 1/4"	C/W NUT & 2 WA	
10	56	7/8	4 1/2"	C/W NUT & 2 WA	
11					

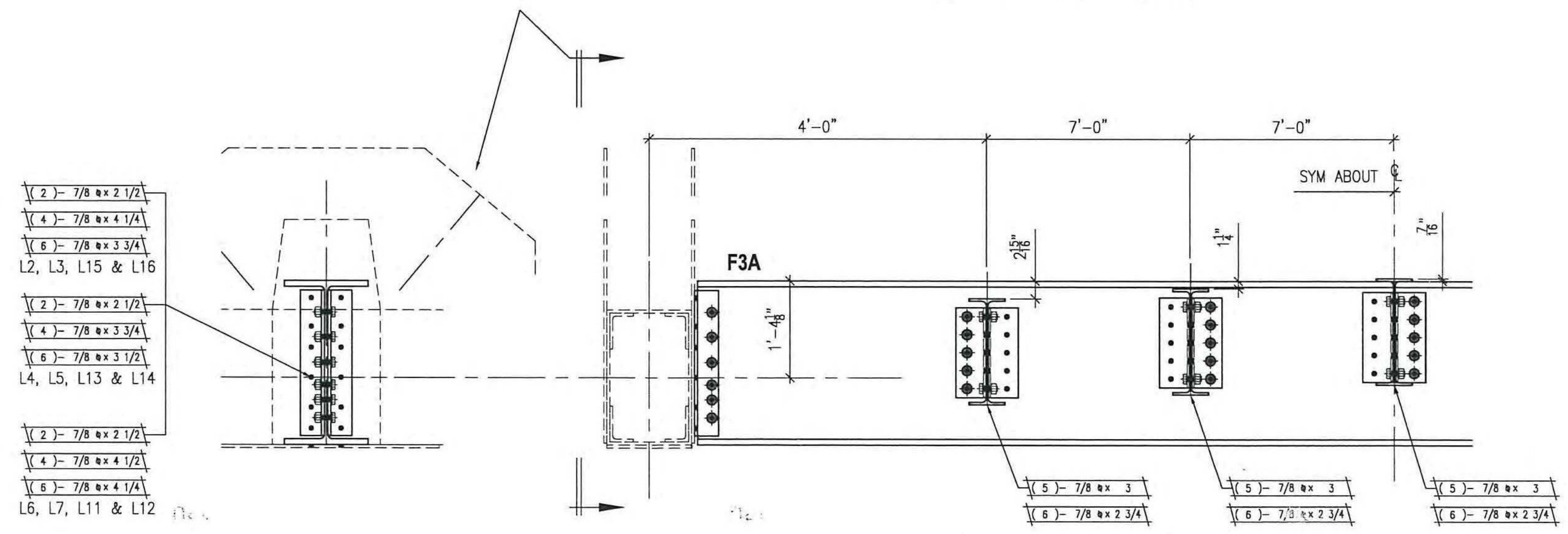
ALL QUANTITIES ARE EXACT - ADD 5 % AND 10 TO EACH LENGTH



SECTION A-A (2 - LOC's)



SECTION B-B (5 - LOC's)



SECTION C-C (12 - LOC's)

NO EXCEPTION TAKEN  MAKE CORRECTIONS NOTED  
 REJECTED  REVISE AND RESUBMIT  
 SUBMIT SPECIFIED ITEM

CHECKING IS ONLY FOR GENERAL CONFORMANCE WITH THE DESIGN CONCEPT OF THE PROJECT AND GENERAL COMPLIANCE WITH THE INFORMATION GIVEN IN THE CONTRACT DOCUMENTS. ANY ACTION SHOWN IS SUBJECT TO THE REQUIREMENTS OF THE PLANS AND SPECIFICATIONS. CONTRACTOR IS RESPONSIBLE FOR DIMENSIONS WHICH SHALL BE CONFIRMED AND CORRELATED AT THE JOB SITE; FABRICATION PROCESSES AND TECHNIQUES OF CONSTRUCTION; COORDINATION OF HIS WORK WITH THAT OF ALL OTHER TRADES AND THE SATISFACTORY PERFORMANCE OF THE WORK.

DATE 6/8/12 BY CHA [Signature]

- LEGEND:**
- CL = CENTERLINE
  - CTR'D = CENTERED
  - C/C = CENTER TO CENTER
  - FLG = FLANGE
  - TOP = TOP
  - BTM = BOTTOM
  - RDFH = RUNNING DIMENSIONS FROM HERE
  - FIELD BOLTS = (QUANTITY) DIAMETER x LENGTH
  - ◇ = ALTERNATE HOLE DIAMETER
  - TYP = TYPICAL
  - N/S = NEAR SIDE
  - F/S = FAR SIDE
  - B/S = BOTH SIDES
  - BTS = BOLT TO SHIP
  - ◇ = TEMPORARY BOLT FOR SHIPPING
  - D.O.R. = DIRECTION OF ROLL
  - T2 = CHARPY V-NOTCH TESTING REQUIRED
  - F2 = FRACTURE CRITICAL MATERIAL
  - ⊗ = FIELD DRILLED HOLE
  - ⊗ = FIELD DRILLED HOLE

ALL DIMENSIONS HAVE BEEN FIELD VERIFIED  
 BY: \_\_\_\_\_ DATE: \_\_\_\_\_

- NOTES:
- FOR GENERAL NOTES SEE DRAWING GN1.
  - INSTALL WASHER UNDER HEAD OF BOLT AS WELL AS NUT.
  - ALL HOLES MARKED "⊗" OR "⊗" ARE TO BE FIELD DRILLED HOLES.

NO.	DATE	BY	REVISION
3	06/05/12	RC	FB1 LAT BRACE CONNECTION REVISED
2	05/02/12	RC	ISSUED FOR CONSTRUCTION HOLD ADDED
1	03/28/12	RC	ISSUED FOR FINAL APPROVAL
G	03/19/12	RC	BOLT HOLD REMOVED
F	03/15/12	RC	BOLTS REVISED TO A325 GALV

**STS STEEL, INC.**  
 ENGINEERS + FABRICATORS + ERECTORS  
 PH: (518) 370-2693 FAX: (518) 370-2696

DRAWING TITLE  
**FLOOR SYSTEM (SECTIONS)**

PROJECT No. US RT 2 BRIDGE No 24 FEDERAL AID No.  
 ENGINEER: CHA  
 CUSTOMER: Harrison & Burrowes Bridge Constructors, Inc.  
 PROJECT: RICHMOND, VT - TRUSS BRIDGE REHAB  
 RICHMOND, VT

FILES: 15/16" U.N.O. PAINT: PER SPEC DATE: 09/15/11  
 BOLTS: A325 GALV U.N.O. DR.BY: RC JOB NO. 1156  
 WELDS: AWS D1.5 CHK.BY: SG DWG NO. E2B