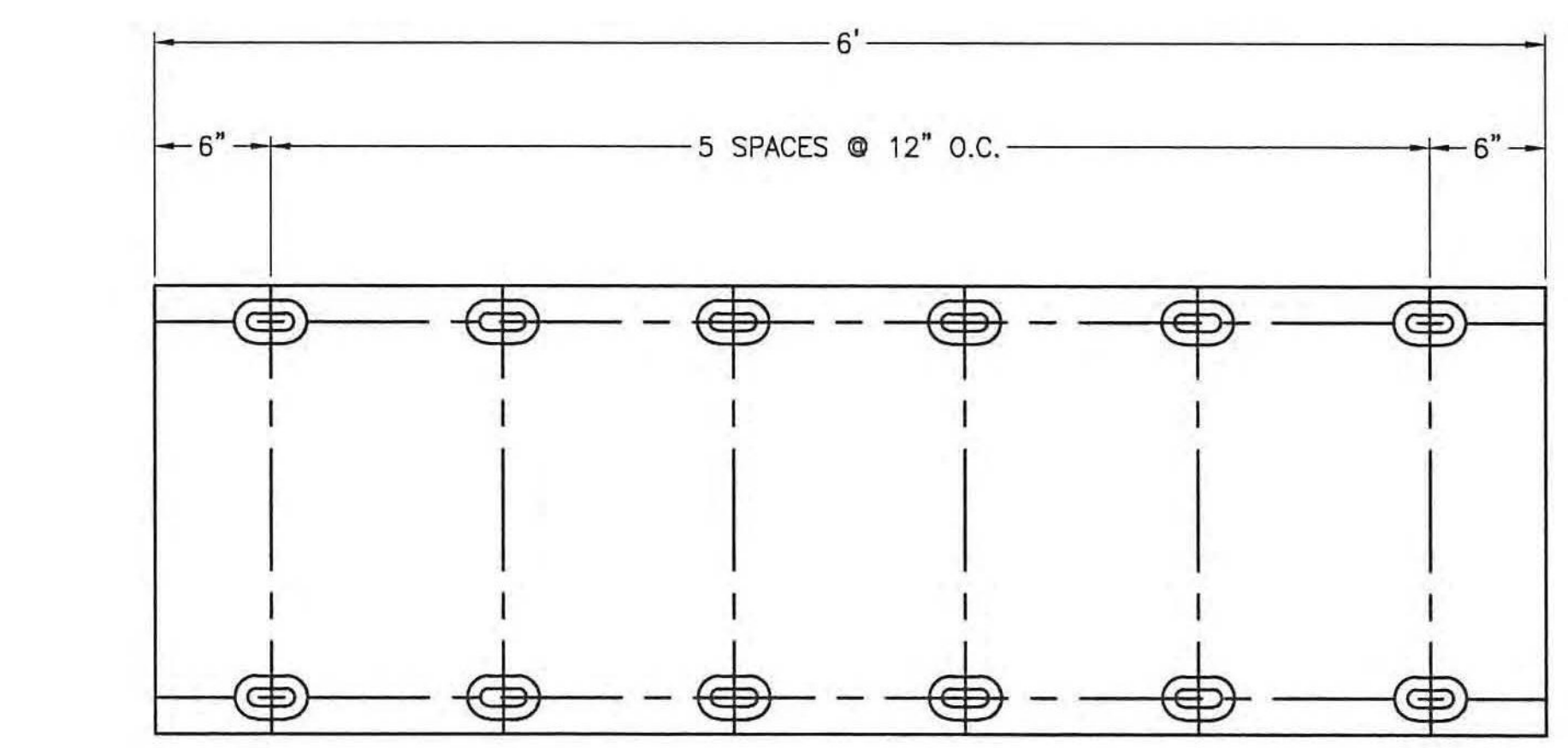
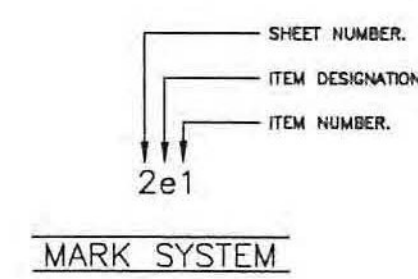


FABRICATED CURB SECTION
TYPICAL
(2) REQUIRED

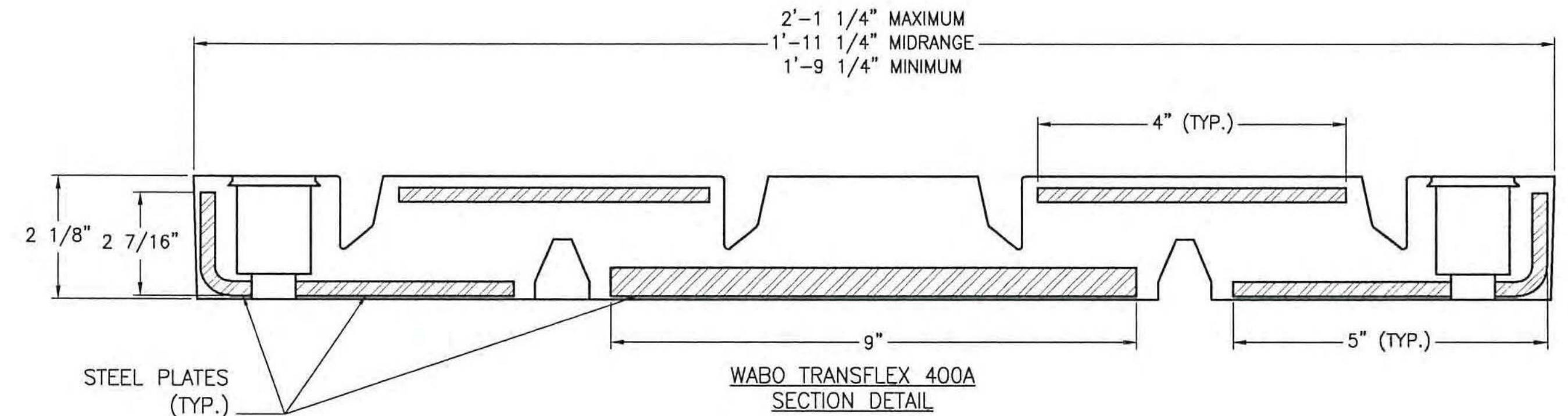


PLAN VIEW STANDARD SECTION (2R1)
(4) REQUIRED



INSTALLATION PROCEDURE

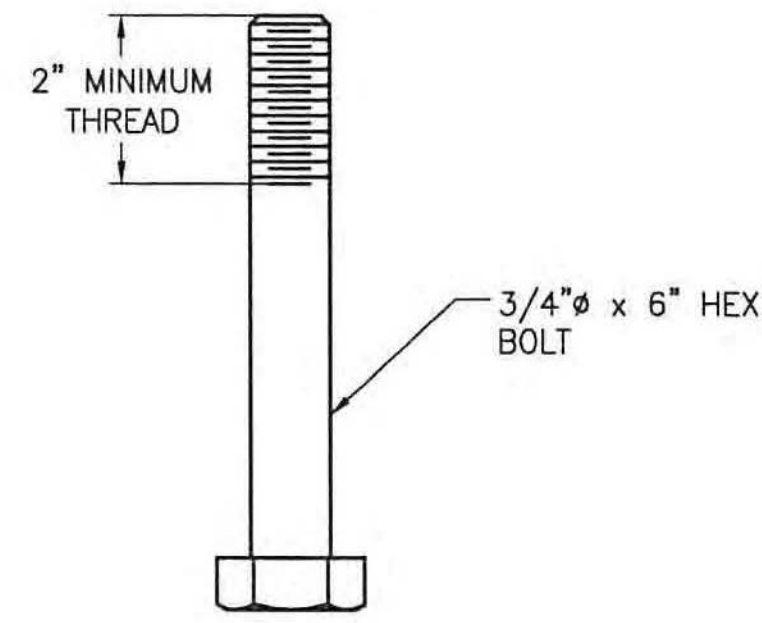
- STEP 1. BLOCKOUT - Blockout in the roadway and sidewalk, shall be constructed to dimensions shown on these drawings. All air bubbles 1/4" and larger shall be painted with an epoxy grout (Supplied by others). The bottom shall be parallel with the roadway and sidewalk surface.
- STEP 2. ANCHOR LOCATION - The anchor spacing corresponding to the dimension spanning the open joint must be verified or adjusted for temperature prior to installation of anchors. All drill bits for use in placing of anchors must comply to ASNI B940 12-77.
- (DRILL IN PLACE TYPE) - A chalk line or other suitable device should be used to mark the centers of anchors parallel to the centerline of the joint. Position the fabricated curb and sidewalk pieces to use a template to mark anchor locations. Drill holes to proper depth.
- STEP 3. BEDDING TAPE - Starting at the curb, position the BEDDING TAPE as shown on the shop drawings. Place fabricated curb into blockout and install fastening hardware.
- STEP 4. JACKING - Place a 2 x 4 against the second set of anchors out from the curb piece as a base for the jack. Adjust the jack to fit into the blockout and place another 2 x 4 against the end section of the sidewalk piece. Compress the roadway section and tighten nuts to 85 ft-lbs.
- STEP 5. ROADWAY SECTIONS - Apply NP1 Sealant to tongue and groove ends of the fabricated curb or sidewalk and install first roadway section. Repeat STEP 4 and 5, stopping at the field cut closing piece.
- STEP 6. FIELD CUT PIECE(S) - Because of the tolerance in both the construction of the deck and the Waboflex SR, it may be necessary to field cut. After field measuring, cut the designated field cut piece to the required dimension. Apply three (3) layers of Bedding Tape between all butt joints, including the field cut closing pieces.
- STEP 7. Approximately 1 hour after initial placement all nuts shall be retorqued to 85 ft-lbs.
- STEP 8. BOLT CAVITIES - With all sections installed to the satisfaction of the Engineer, fill bolt cavities in vertical curb pieces to the top of the slot with URA sealant. In the roadway, fill bolt cavities to the top of the slot with URA sealant mixed according to instructions on label.
- STEP 9. EDGE SEALING - Seal void between Waboflex SR and vertical face of the blockout with NP1 Sealant.



- NO EXCEPTION TAKEN
- REJECTED
- MAKE CORRECTIONS NOTED
- REVISE AND RESUBMIT
- SUBMIT SPECIFIED ITEM

CHECKING IS ONLY FOR GENERAL CONFORMANCE WITH THE DESIGN CONCEPT OF THE PROJECT AND GENERAL COMPLIANCE WITH THE INFORMATION GIVEN IN THE CONTRACT DOCUMENTS. ANY ACTION SHOWN IS SUBJECT TO THE REQUIREMENTS OF THE PLANS AND SPECIFICATIONS. CONTRACTOR IS RESPONSIBLE FOR DIMENSIONS WHICH SHALL BE CONFIRMED AND CORRELATED AT THE JOB SITE; FABRICATION PROCESSES AND TECHNIQUES OF CONSTRUCTION; COORDINATION OF HIS WORK WITH THAT OF ALL OTHER TRADES AND THE SATISFACTORY PERFORMANCE OF THE WORK.

CHA
DATE 08/23/2012 BY [Signature]



3/4" x 6" HEX BOLT ASSEMBLY
(58) - REQUIRED

STATE: VERMONT
TOWN: RICHMOND
COUNTY: CHITTENDEN
PROJECT NO.: STP-RS 0284(11)
HIGHWAY NO.: U.S. ROUTE 2
PRODUCT NO.: WAB143387AA
JOINT TYPE: WABO TRANSFLEX

DRAWING ACTION:
SUBMITTED FOR APPROVAL
DATE: 8/10/12

NO.	DESCRIPTION	DATE

Information provided herein, including but not limited to, any drawing, design, photograph, graphic, or statements ("Materials") are proprietary and the property of Watson Bowman Acme Corporation ("Company"). Reproduction, translation, or reduction to any electronic medium or machine readable form, in whole or part, is strictly prohibited, except for the express purpose for which it has been furnished, without prior written consent of Company. All Materials contained herein are provided by Company for information purposes only. Company reserves the right to amend or withdraw any information contained in the Materials without notice. All technical or other advice by Company, whether verbal or written, concerning products, or the use of products in specific situations ("Advice") is given by Company and is used at the Users own risk.

Watson Bowman Acme
WATSON BOWMAN ACME CORPORATION
95 PINEVIEW DRIVE AMHERST, N.Y. 14228 TEL. (716) 691-7555 FAX (716) 691-9239

BASF
The Chemical Company

PROJECT:
U.S. ROUTE 2; BRIDGE NO. 24
OVER WINOOSKI RIVER
CHITTENDEN COUNTY
WABO TRANSFLEX 400-A EXPANSION JOINT DETAILS

DETAILED BY: JWM	DATE: 5/12/12
CHECKED BY: SM	DATE: 5/12/12
SCALE: NTS	WBA JOB NO.: 143387
SHEET NO.: 3 OF 4	DRAWING NO.: B-29906