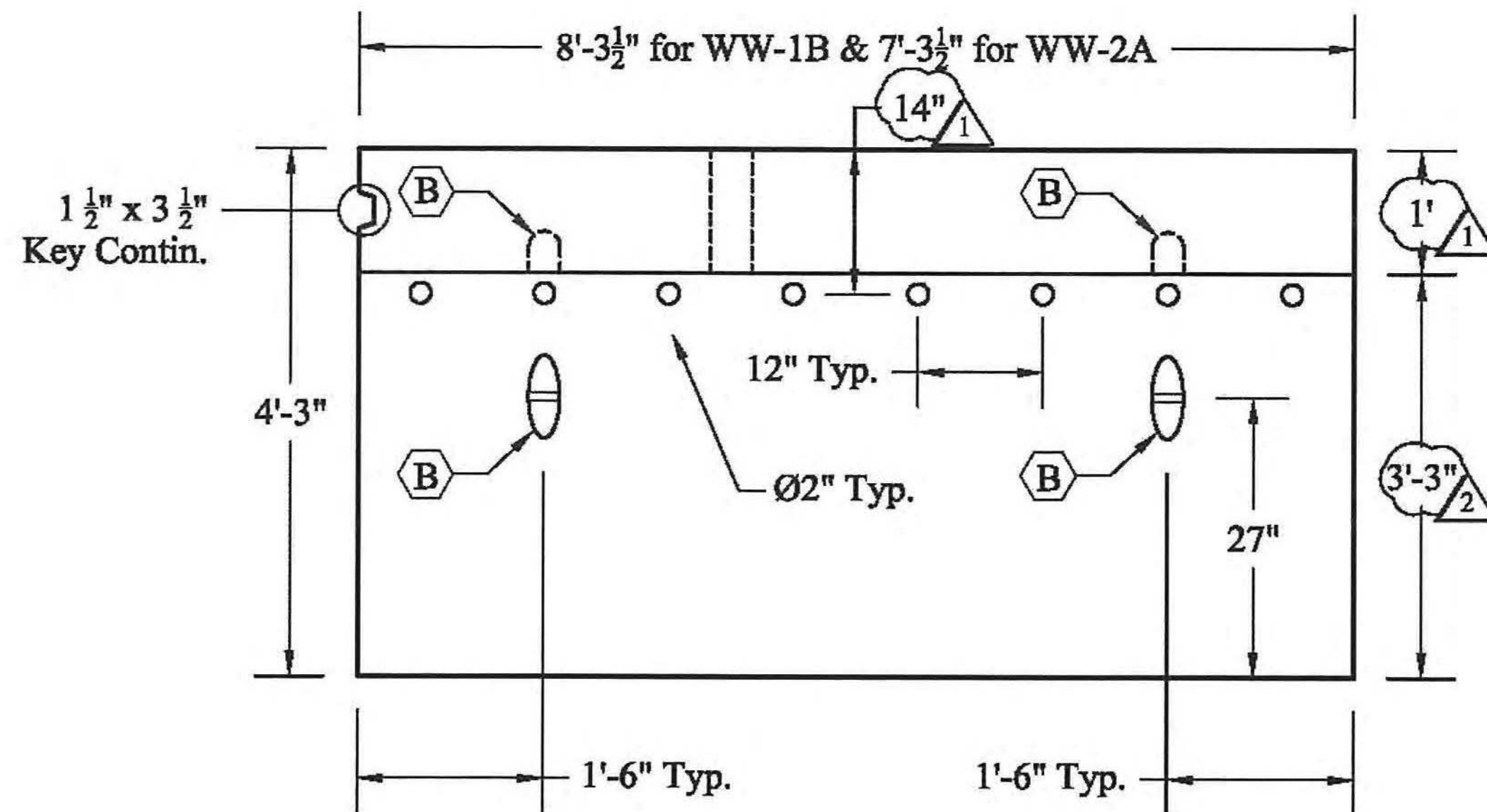
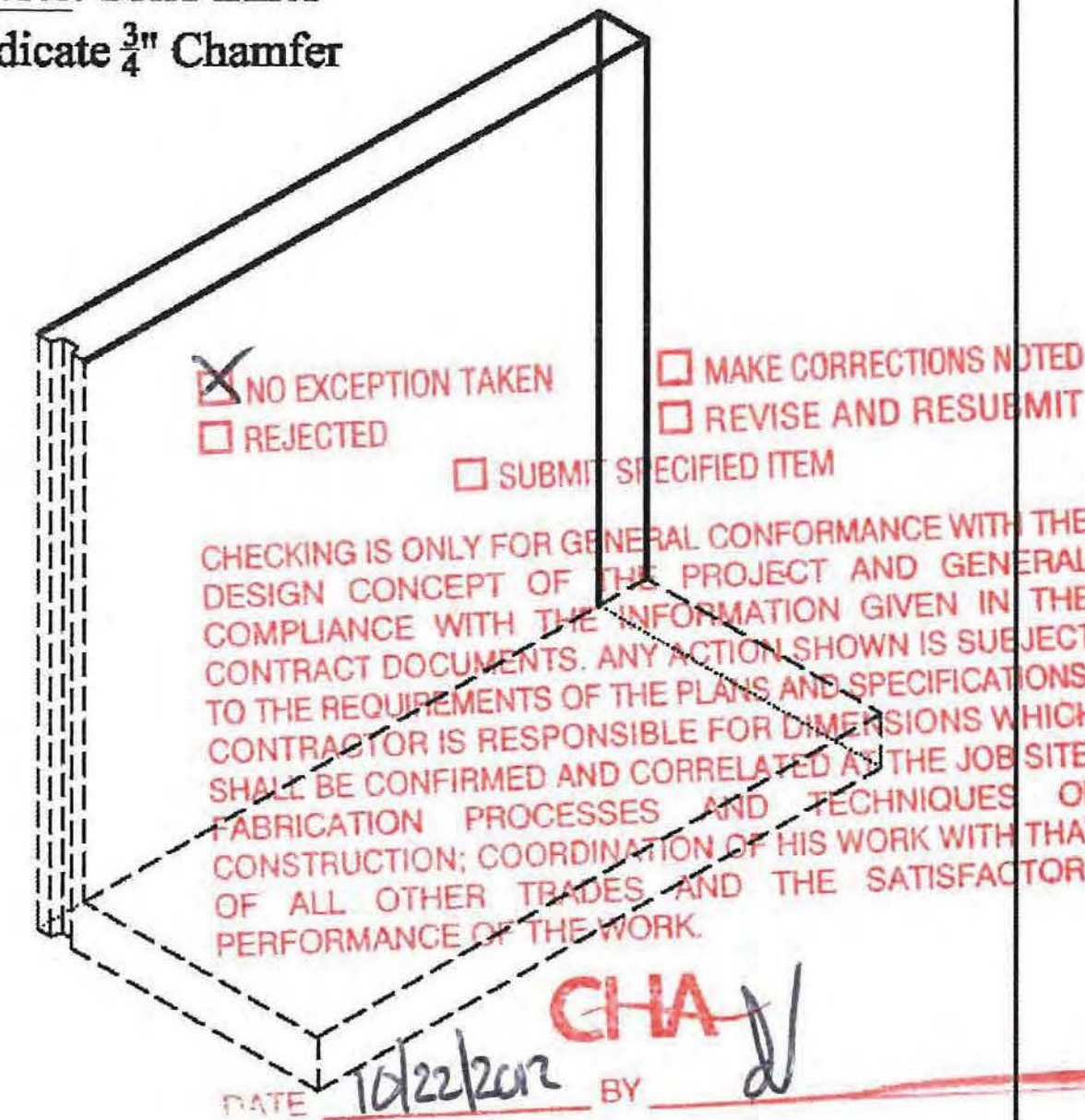


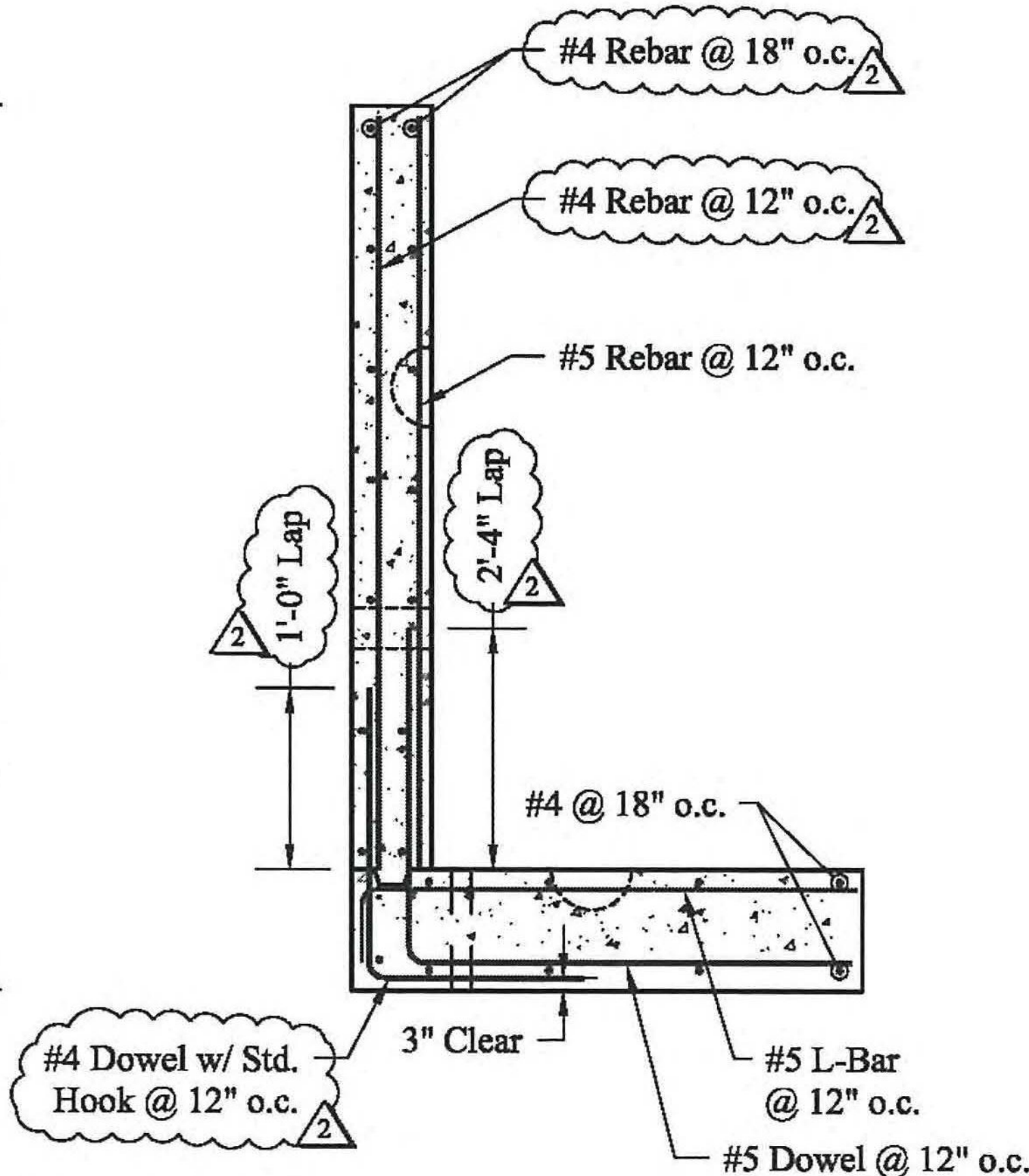
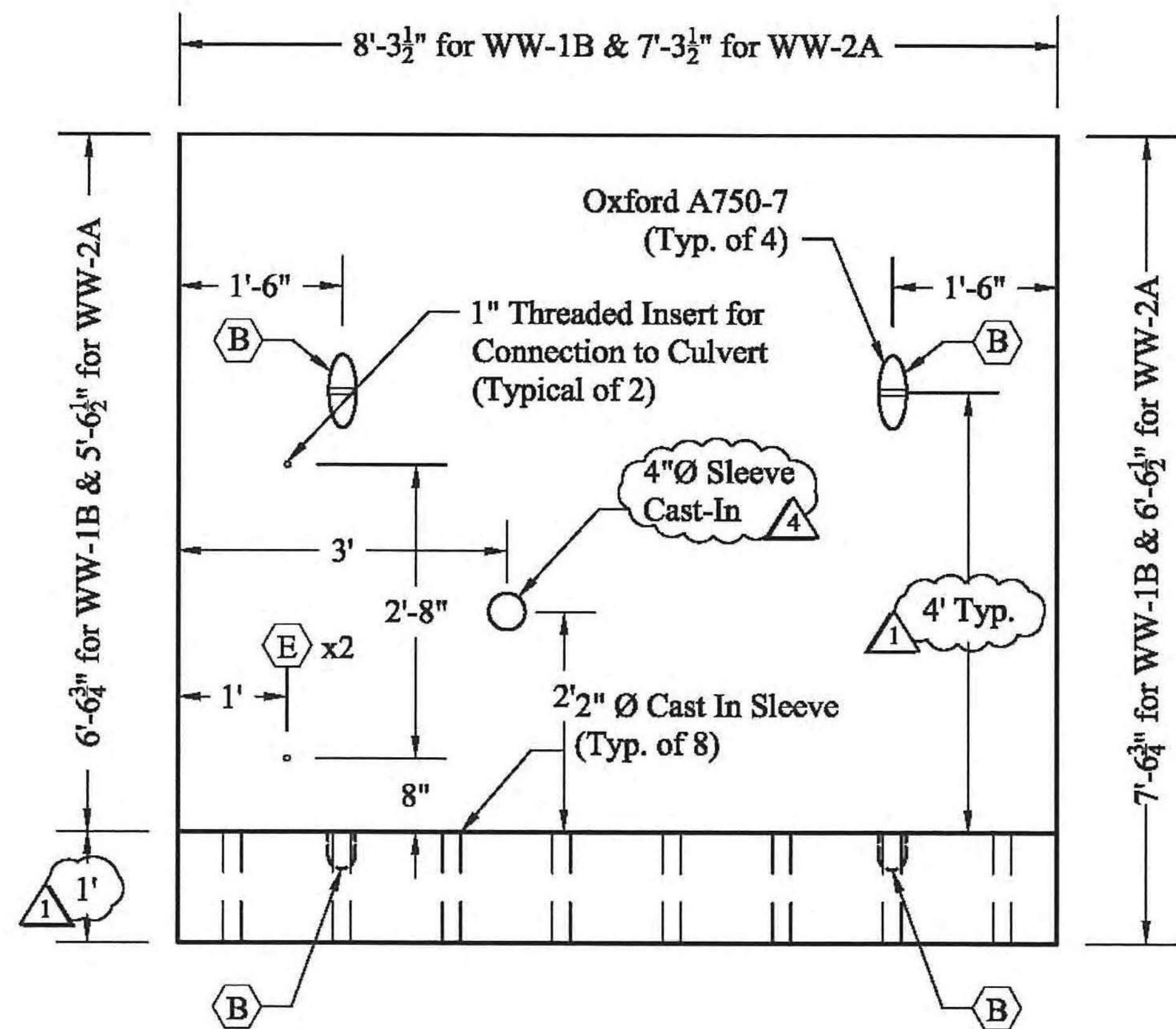
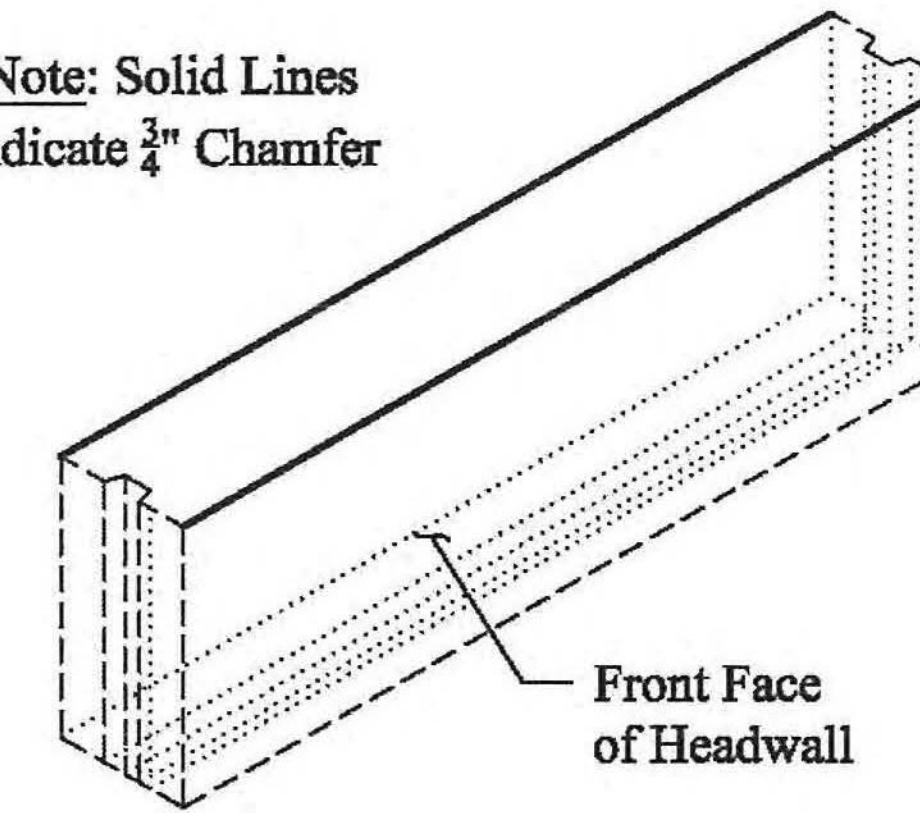
Note: Minimum 2" Cover Unless Noted Otherwise



Note: Solid Lines Indicate 3/4" Chamfer



Note: Solid Lines Indicate 3/4" Chamfer



Wingwall Elevation WW-1B/2A

Name	Qty	Length	Vol (CY)	Weight (lbs)
WW-1B	1	8'-3 1/2"	3.32	13,280
WW-2A	1	7'-3 1/2"	2.64	10,575/2

Headwall HW-1 & HW-2

Name	Qty	Height	Vol (CY)	Weight (lbs)
HW-1	1	2'-2 3/4"	.52	2,090
HW-2	1	1'-1 1/2"	.28	1,130



193 Industrial Ave, Williston, VT 05495  
P.O. Box 2286, South Burlington, VT 05407  
Phone: (802) 658-0201 www.SDIreland.com

Note: This shop drawing represents S.D. Ireland's interpretation of the architects plans and specifications as well as our contract requirements for this project.

Prior to manufacture and production from this drawing all dimensions, methods of construction, and existing conditions must be checked, revised and approved by S.D. Ireland's client.

General Notes:  
1) All Mortar and Control Joints are Assumed to be 1/2"  
2) All lengths stated are actual lengths.  
3) All lengths stated to be verified in the field by others: -Not the responsibility of S.D. Ireland  
4) Estimated Heavy Pick at ±19,660 lbs.

Legend:

- (A) Oxford A750-5
- (B) Oxford A750-7
- (C) Angle Bracket, Galvanized
- (D) Patterson Bolt Pocket
- (E) CX-51 1"Øx6" Open Coil Insert #2210
- (F) P.A. Insert Corp. 5/8" Plastic Insert
- (G) 1"Ø Threaded Rod
- (H) 1/2" Washer
- (I) 1"Ø Threaded Nut
- (J) 1"Ø Coil Rod, Galvanized
- (K) 1"Ø Washer, Galvanized
- (L) 1"Ø Coil Nut, Galvanized
- (M) P.A. Insert Corp. 3/4" Plastic Insert



Rev.	Date	By	Description
1	08/22/12	CD	Changes Per State Review
2	09/13/12	CD	Changes Per Engineering Review
3	10/10/12	CD	Per McFarland-Johnson Review
4	10/22/12	CD	Weep Holes Added to Wing Walls

Project Name: STP RS 0284 (11)  
Project Location: Richmond, VT  
Drawing Title: Wing & Head Walls  
Job #: 11707 Date: 11/30/11  
Scale: N.T.S. Page: 5 of 5