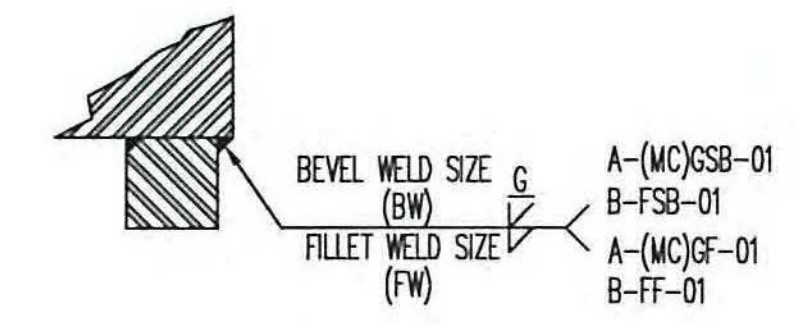
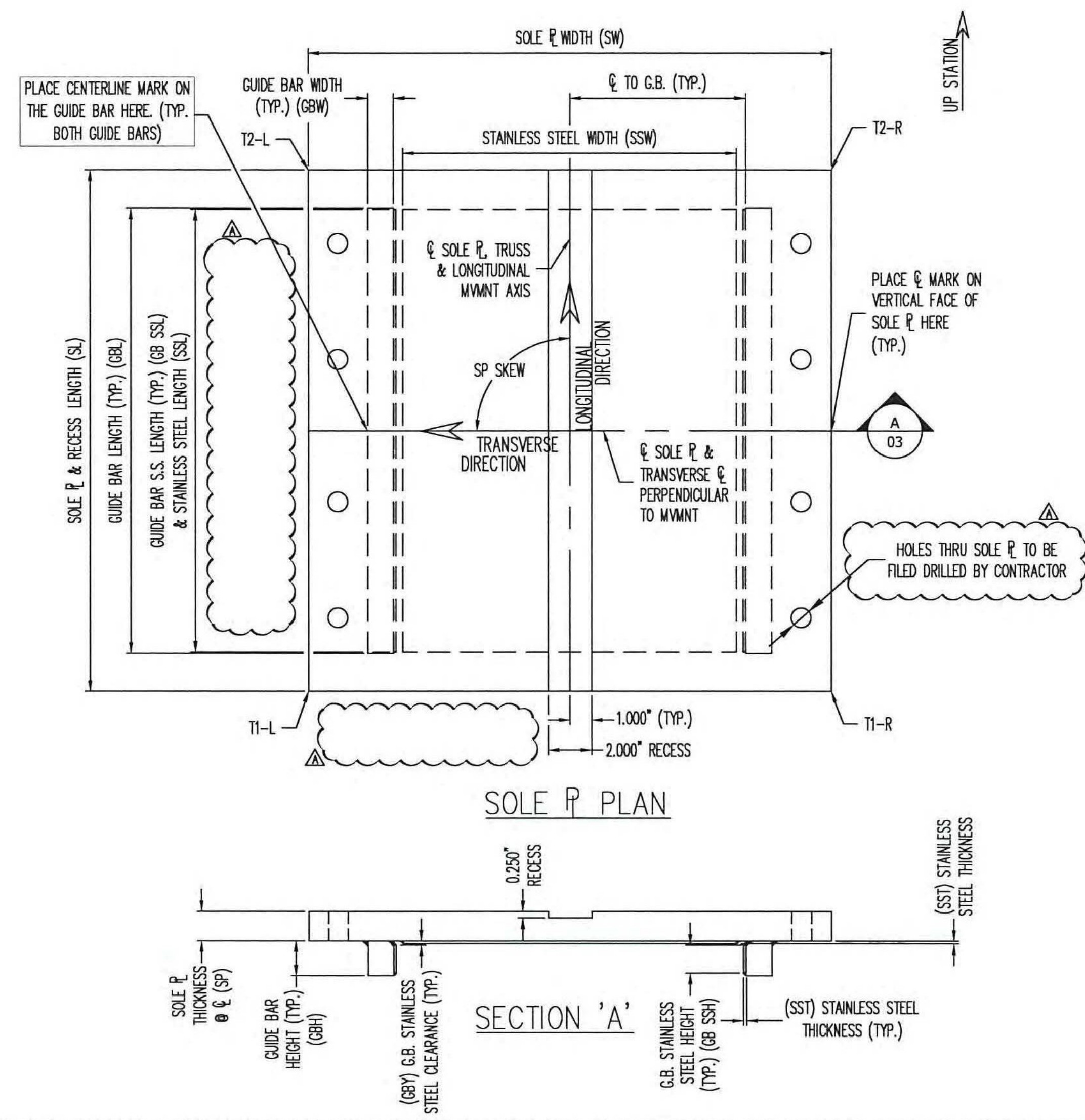
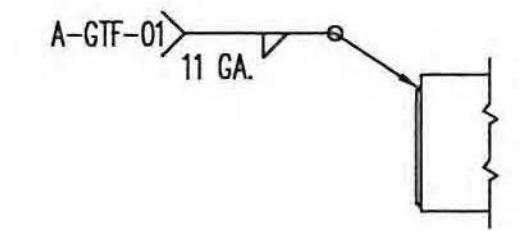


ASSEMBLY 01



GUIDE BAR WELD DETAIL
 NOTE: SEAL WELD BOTH ENDS OF THE GUIDE BARS.



STAINLESS STEEL WELD DETAIL

NOTE: DS BROWN RESERVES THE RIGHT TO MACHINE THE GUIDE BARS AND SOLE PLATE OUT OF ONE PIECE OF STEEL IN LIEU OF WELDING THE GUIDE BARS TO THE SOLE PLATE. IF THE GUIDE BARS ARE MADE INTEGRAL, THE GUIDE BAR LENGTH WILL EITHER REMAIN THE SAME OR WILL BE EXTENDED THE LENGTH OF THE PLATE. THE GUIDE BAR WIDTHS AND INTERNAL DIMENSIONS WILL BE HELD.

SOLE PLATE, STAINLESS STEEL, & GUIDE BAR SCHEDULE (PMG)																													
ASSEM MK	PIECE MK	QTY	BEVEL T1-L	BEVEL T1-R	BEVEL T2-L	BEVEL T2-R	SP	SW	SL	SOLE PLATE MATERIAL	SP SS MK	SST	SSW	SSL	SP SS MATERIAL	GB SS MK	GB SSH	GB SSL	GB SS MATERIAL	GB MK	GBW	GBH	GBL	CL to GB	GBY	FW	BW	GB MATERIAL	SP SKEW
1A	1sp1	2	1.000	1.000	1.000	1.000	1.000	34.000	36.000	A709 GR 50 or 50W	1sf1	0.120	18.250	24.625	A240 T304, #8 & 2B	1sg1	1.375	24.625	A240 T304, #8 & 2B	1gb1	1.500	1.875	24.875	9.714	0.344	0.313	0.438 (0.313)	A709 GR 50 or 50W	+90.0°

- NO EXCEPTION TAKEN
- REJECTED
- MAKE CORRECTIONS NOTED
- REVISE AND RESUBMIT
- SUBMIT SPECIFIED ITEM

CHECKING IS ONLY FOR GENERAL CONFORMANCE WITH THE DESIGN CONCEPT OF THE PROJECT AND GENERAL COMPLIANCE WITH THE INFORMATION GIVEN IN THE CONTRACT DOCUMENTS. ANY ACTION SHOWN IS SUBJECT TO THE REQUIREMENTS OF THE PLANS AND SPECIFICATIONS. CONTRACTOR IS RESPONSIBLE FOR DIMENSIONS WHICH SHALL BE CONFIRMED AND CORRELATED AT THE JOB SITE; FABRICATION PROCESSES AND TECHNIQUES OF CONSTRUCTION; COORDINATION OF HIS WORK WITH THAT OF ALL OTHER TRADES AND THE SATISFACTORY PERFORMANCE OF THE WORK.

DATE 4/2/12 BY CHA

* PER PLATE
 SEE SHEET 1 FOR ASSEMBLY DETAILS & LOCATIONS.
 SEE SHEET 2 FOR ADDITIONAL SUB-ASSEMBLY DETAILS.
 ALL DIMENSIONS ARE IN INCHES UNLESS OTHERWISE NOTED.

REV.	DESCRIPTION	DATE	DET.	CHKD.
1	REV. HOLES TO FIELD DRILLED & REMOVED DIM'S TO HOLES	2/15/12	-	ANK

ITEM	QUANTITY
LOCATION — RICHMOND U.S. ROUTE 2	-
BRIDGE NO. — 24	-
PROJECT NO. — STP-RS 0284(11)	-
P.O. NO. — 1247	-
DESIGNER — CHA	-
CUSTOMER — HARRISON & BURROWES CONSTRUCTORS	-

SCOPE/REV.	SCALE	DRAWN BY:	CHECKED BY:	DATE
PMG UNI-DIRECTIONAL HLNR SUB-ASSEMBLY DETAILS	N.T.S.	ANO	ANK	10/17/11

PROJECT NUMBER	PRODUCT CODE	RELEASE	SHEET
33716	1112	1	03