

MATERIAL SPECIFICATIONS:

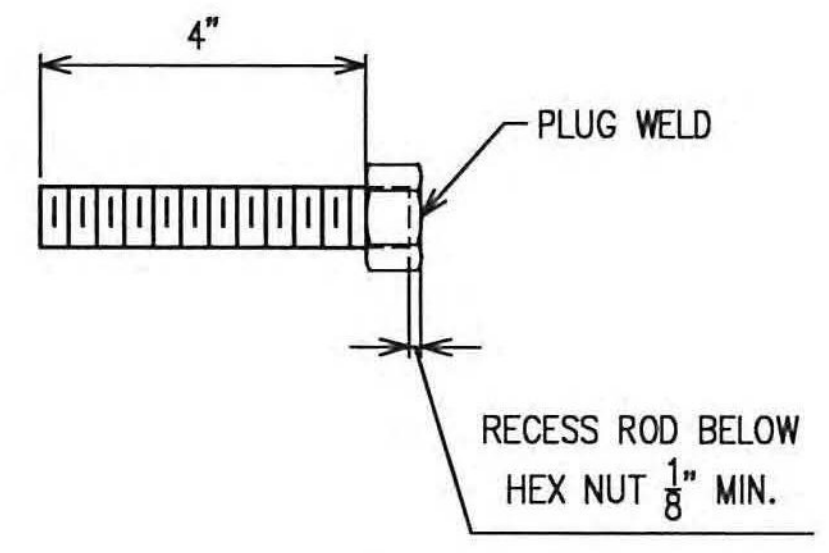
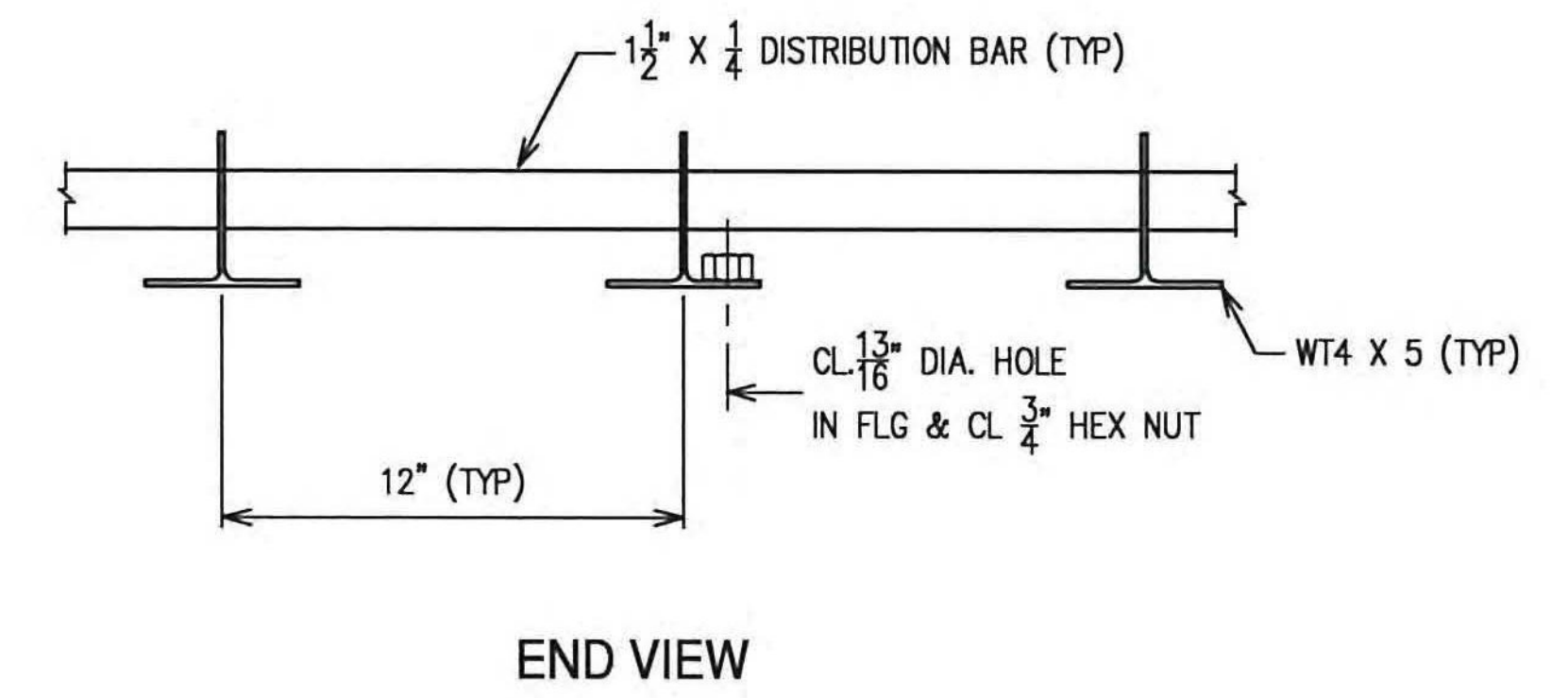
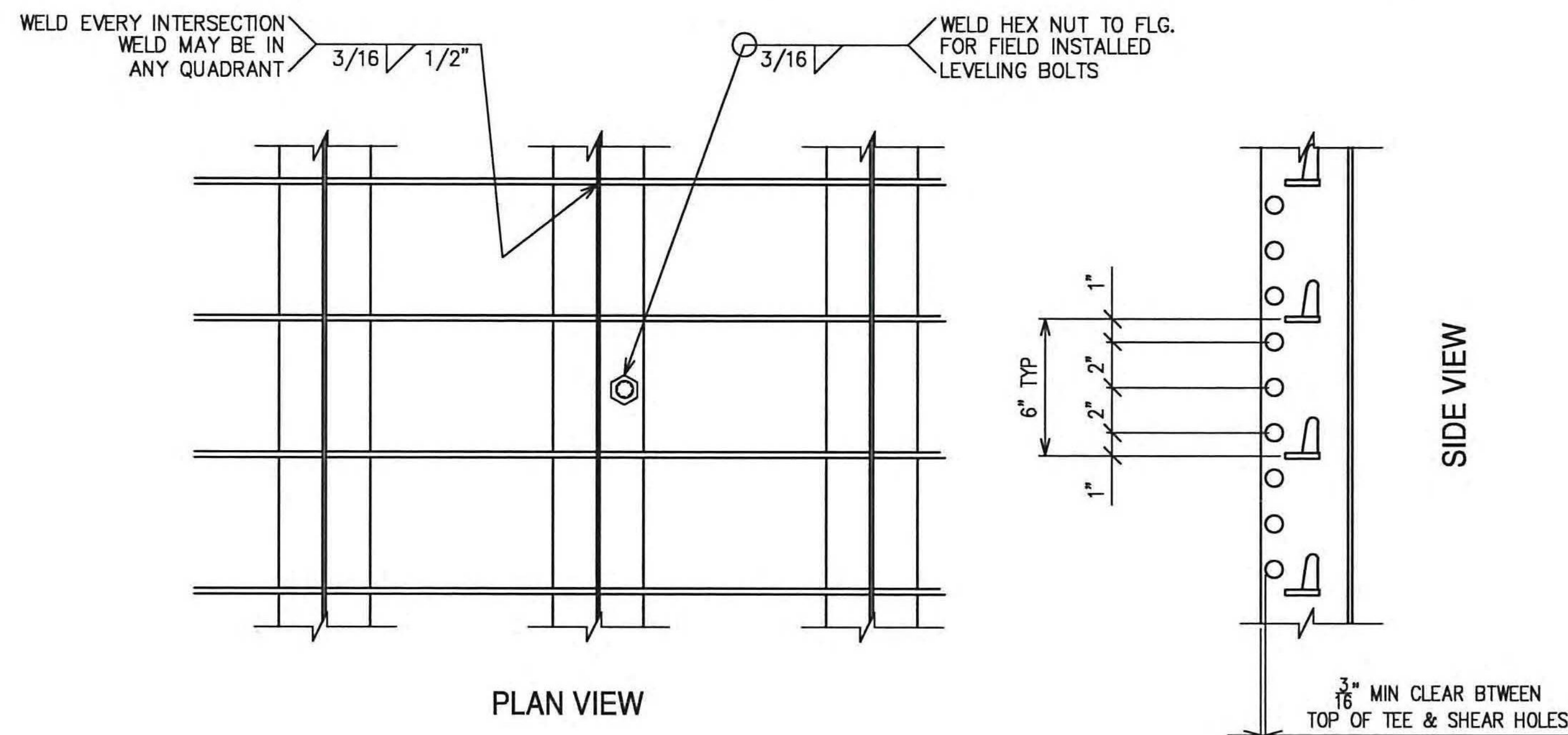
- WT 4 X 5 = ASTM A992 GRADE 36 OR BETTER
- 2" X 1/4" CROSS BARS = ASTM A709 GRADE 36 OR BETTER
- 20 GA. FORM PAN MATERIAL = ASTM A1008 FOR PANS SHOP WELDED IN GRID PRIOR TO GALVANIZING OF PANELS.
- 20 GA. FORM PAN MATERIAL = ASTM A536 GALVANIZED SHEET FOR FIELD INSTALLED PANS
- THREADED RODS FOR LEVELING BOLTS = ASTM A449
- HEX NUTS = ASTM A194.

SHOP WELDING NOTES:

1. ALL WELDING SHALL CONFORM TO AWS D1.5 (2008) BRIDGE WELDING CODE. GAS METAL ARC WELDING (MIG) IS PERMITTED.

GENERAL NOTES:

1. PANEL LENGTH IS IN DIRECTION OF TEES.
2. PANEL WIDTH IS PERPENDICULAR TO DIRECTION OF TEES.
3. PROPRIETARY STEEL PUNCHING DETAILS NOT SHOWN.
4. THIS WELDED GRID DECK SYSTEM UTILIZES INDUSTRY STANDARD WELDS AT THE INTERSECTION OF THE STEEL BARS.
5. THE FOLLOWING FABRICATION TOLERANCES SHALL APPLY:
 - A. PANEL LENGTH IS +/- 1/4".
 - B. PANEL WIDTH IS +0/ -1/8".
 - C. SQUARENESS DIAGONAL MEASUREMENT IS +/- 1/2" OF OPPOSITE DIAGONAL.
 - D. LONGITUDINAL CAMBER (IN DIRECTION OF TEES) IS .003 x LENGTH.
 - E. TRANSVERSE CAMBER (IN DIRECTION OF DISTRIBUTION BARS) IS .004 x WIDTH.
 - F. SIDE BOW (SWEEP) IS .025 X LENGTH (IN FEET) - RESULT MEASURED IN INCHES.
6. GALVANIZE EXODERMIC DECK PANELS PER ASTM A123 AFTER FABRICATION.
7. LEVELING BOLTS WILL BE FURNISHED UNCOATED.



NO EXCEPTION TAKEN
 REJECTED
 MAKE CORRECTIONS NOTED
 REVISE AND RESUBMIT
 SUBMIT SPECIFIED ITEM

CHECKING IS ONLY FOR GENERAL CONFORMANCE WITH THE DESIGN CONCEPT OF THE PROJECT AND GENERAL COMPLIANCE WITH THE INFORMATION GIVEN IN THE CONTRACT DOCUMENTS. ANY ACTION SHOWN IS SUBJECT TO THE REQUIREMENTS OF THE PLANS AND SPECIFICATIONS. CONTRACTOR IS RESPONSIBLE FOR DIMENSIONS WHICH SHALL BE CONFIRMED AND CORRELATED AT THE JOB SITE; FABRICATION PROCESSES AND TECHNIQUES OF CONSTRUCTION; COORDINATION OF HIS WORK WITH THAT OF ALL OTHER TRADES AND THE SATISFACTORY PERFORMANCE OF THE WORK.

DATE 9/2/12 BY CHA

REVISION LOG		
NO.	DATE	DESCRIPTION

CUSTOMER:
HARRISON & BURROWES

PROJECT:
**VERMONT AGENCY OF TRANSPORTATION
TOWN OF RICHMOND, COUNTY OF CHITTENDEN
U.S. ROUTE 2, BRIDGE NO. 24
WBS 1-16 BRIDGE DESIGN
EXODERMIC GRID DECK**

CLEARSPAN CONSTRUCTION PRODUCTS P.O. BOX 12708 PITTSBURGH, PA. 15241 PHONE: (412)-445-2765 FAX: (412)-341-2846		DRAWING NO.	REV. NO.
		1	0
DRAWN RLP	DATE 11/17/12	CHECKED NC	APPROVAL DATE 7/09