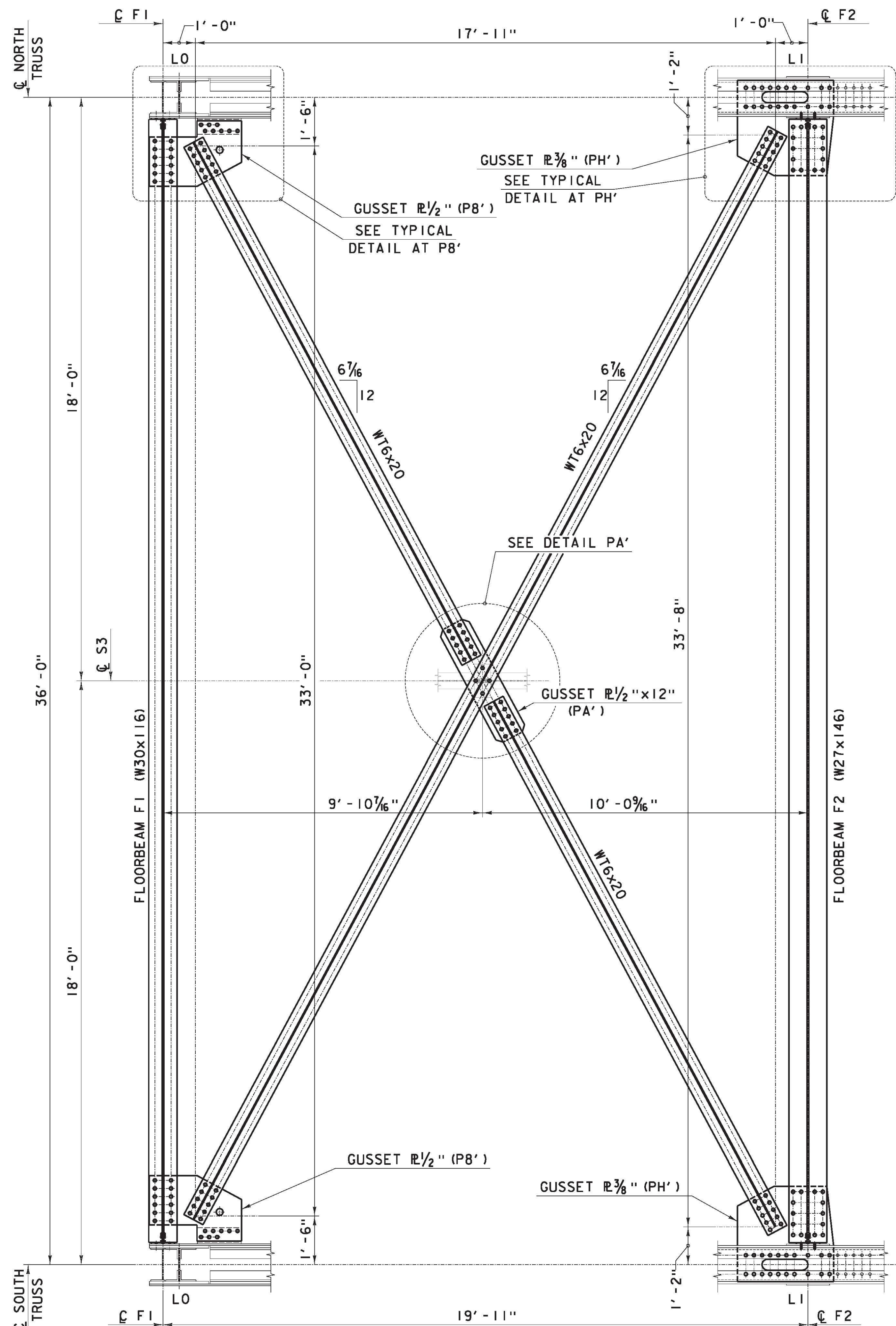
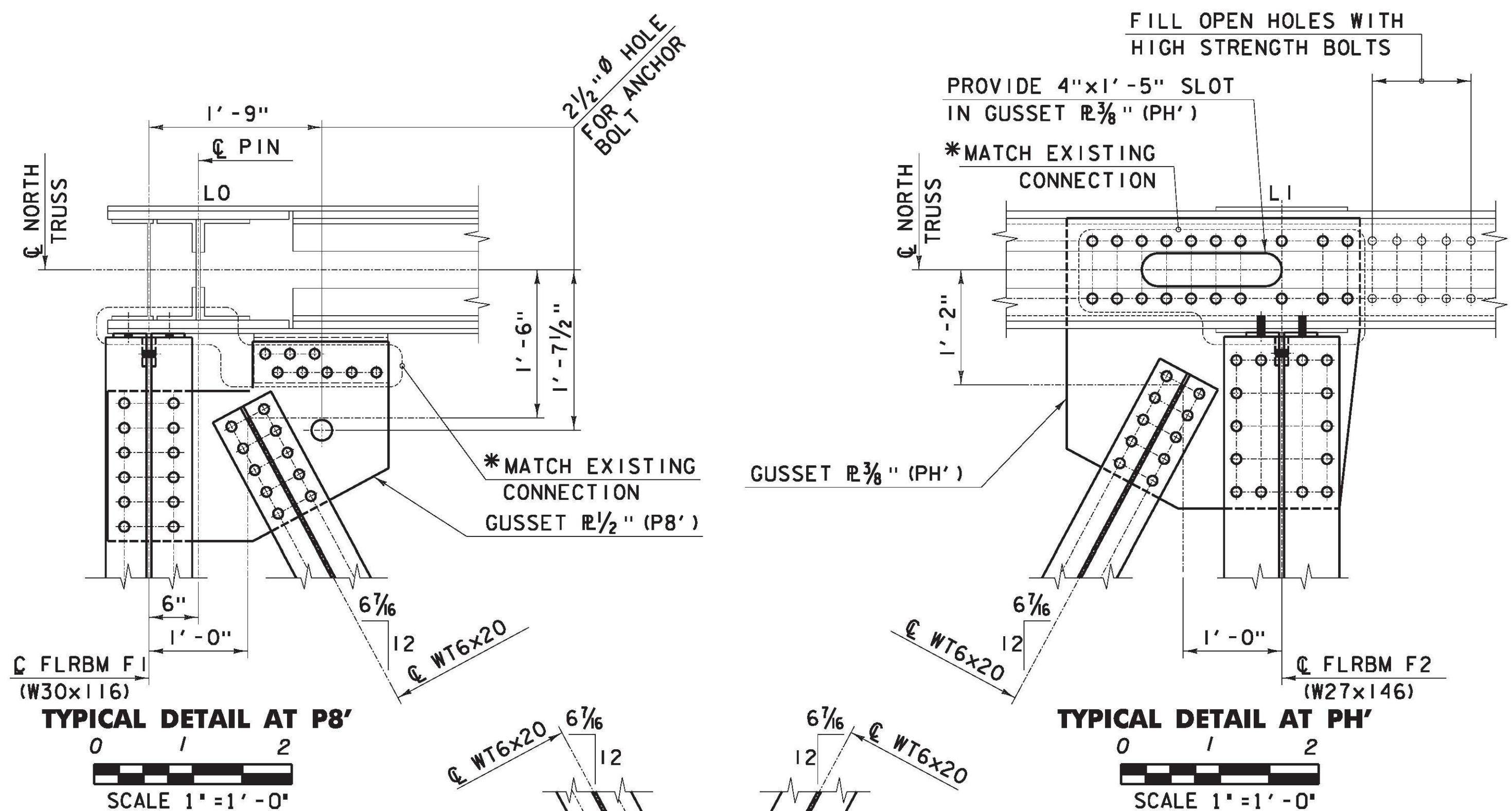


FILE NAME = V:\AP\Projects\161\22076\CADD\MSTN\BRIDGE WORK\WB5 (1-16) BRIDGE DESIGN\96092_bott_lat.dtl.dwg
 DATE/TIME = 3/14/2013
 USER = 3293

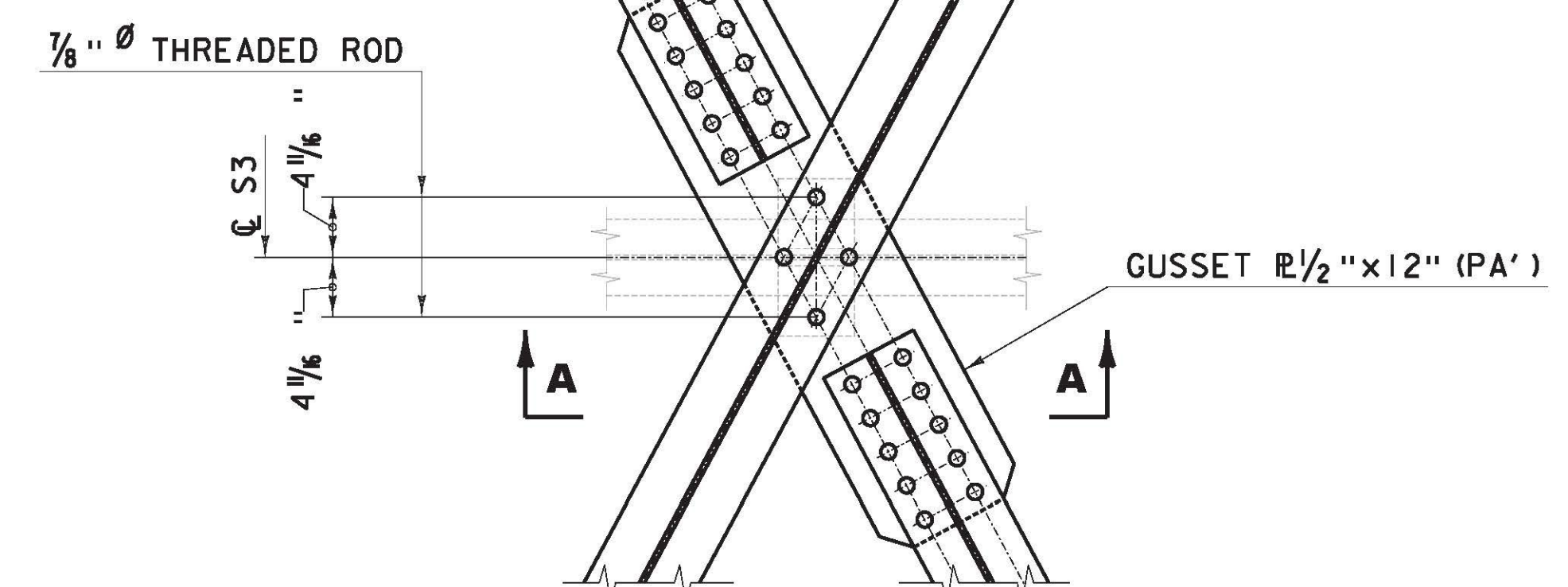


BOTTOM LATERAL BRACING LAYOUT DETAIL (LB1)

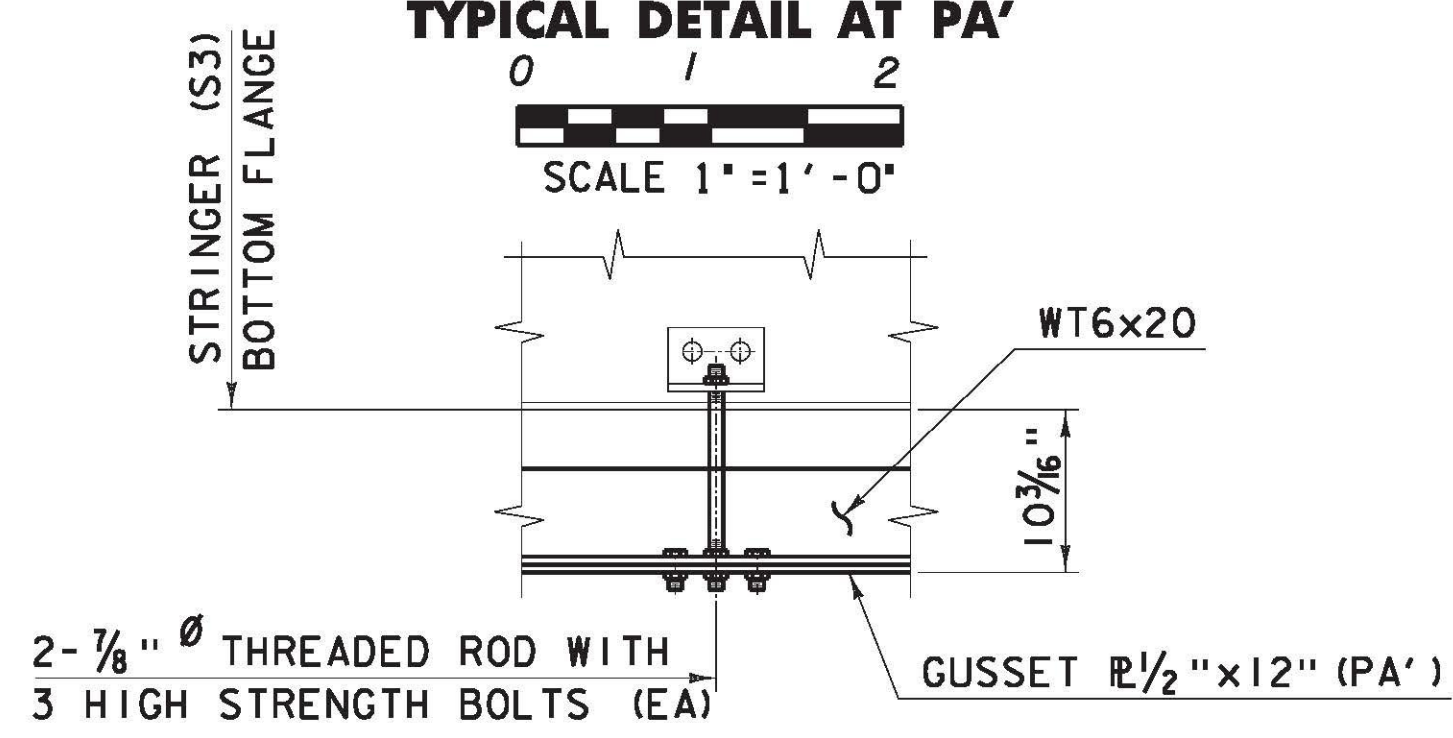


TYPICAL DETAIL AT P8'
 SCALE 1" = 1'-0"

TYPICAL DETAIL AT PH'
 SCALE 1" = 1'-0"



TYPICAL DETAIL AT PA'
 SCALE 1" = 1'-0"



SECTION A-A

- NOTES:**
1. FOR FRAMING PLAN AND SECTIONS, SEE DWG NO ST1.
 2. FOR ADDITIONAL INFORMATION, SEE SHEET E1, 8, 9 & 14b FROM THE 1929 FABRICATION DRAWINGS.
 3. MEMBER DESIGNATIONS TAKEN FROM 1929 FABRICATION DRAWINGS
- * -SEE CONNECTION INSTALLATION METHODS
 "A" = NEW MEMBER DESIGNATION.

BOTTOM LATERAL BRACING DETAILS (LB1)

PROJECT NAME: RICHMOND	PLOT DATE: 3/14/2013
PROJECT NUMBER: STP-RS 0284(III)	DRAWN BY: PKR
FILE NAME: z90c092_bott_lat_dtl.dwg	DESIGNED BY: RH
PROJECT LEADER: DJV	CHECKED BY: VC/KM
DWG. NO.: ST20	SHEET X OF X

SCALE 1/2" = 1'-0" (UON)