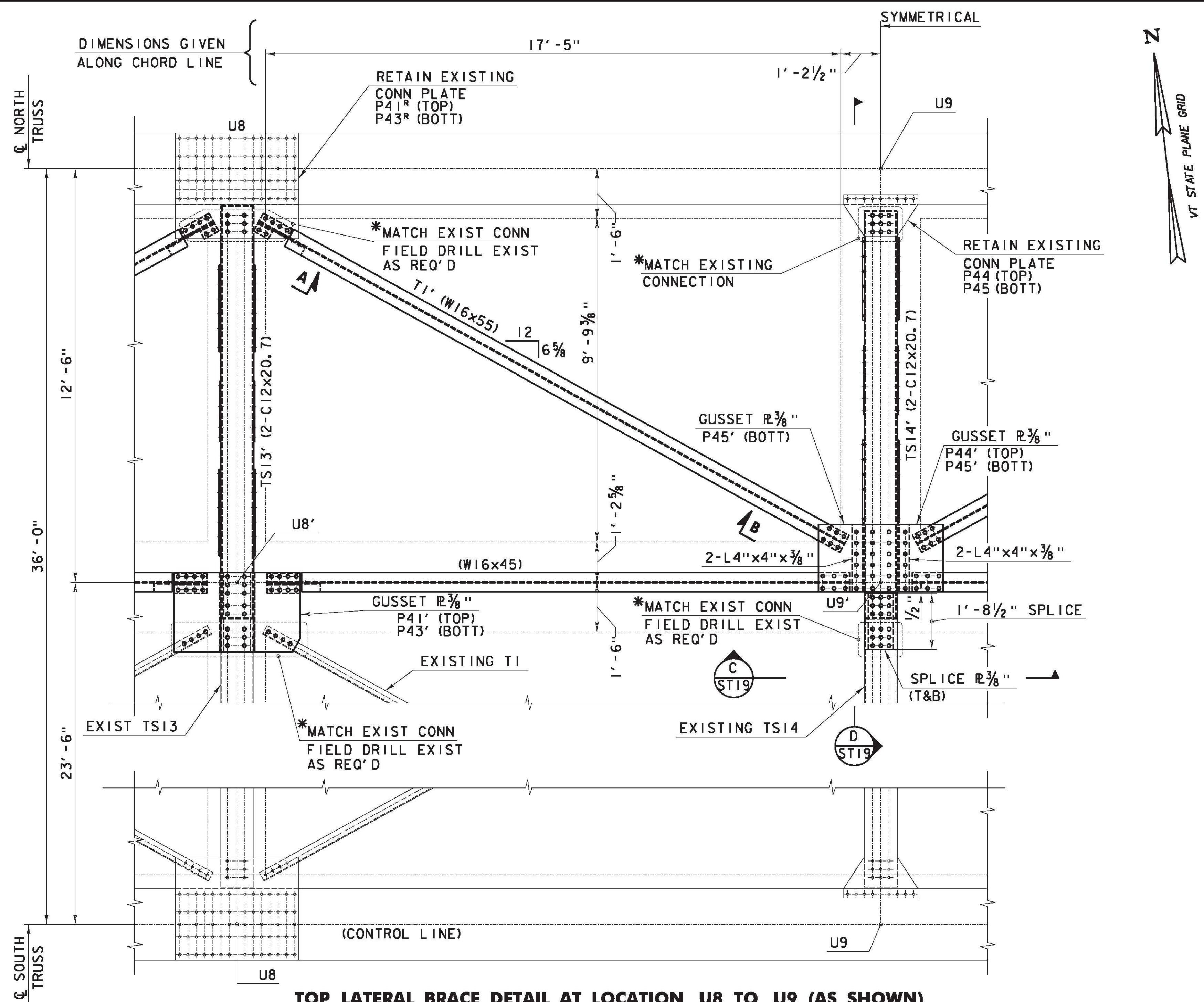
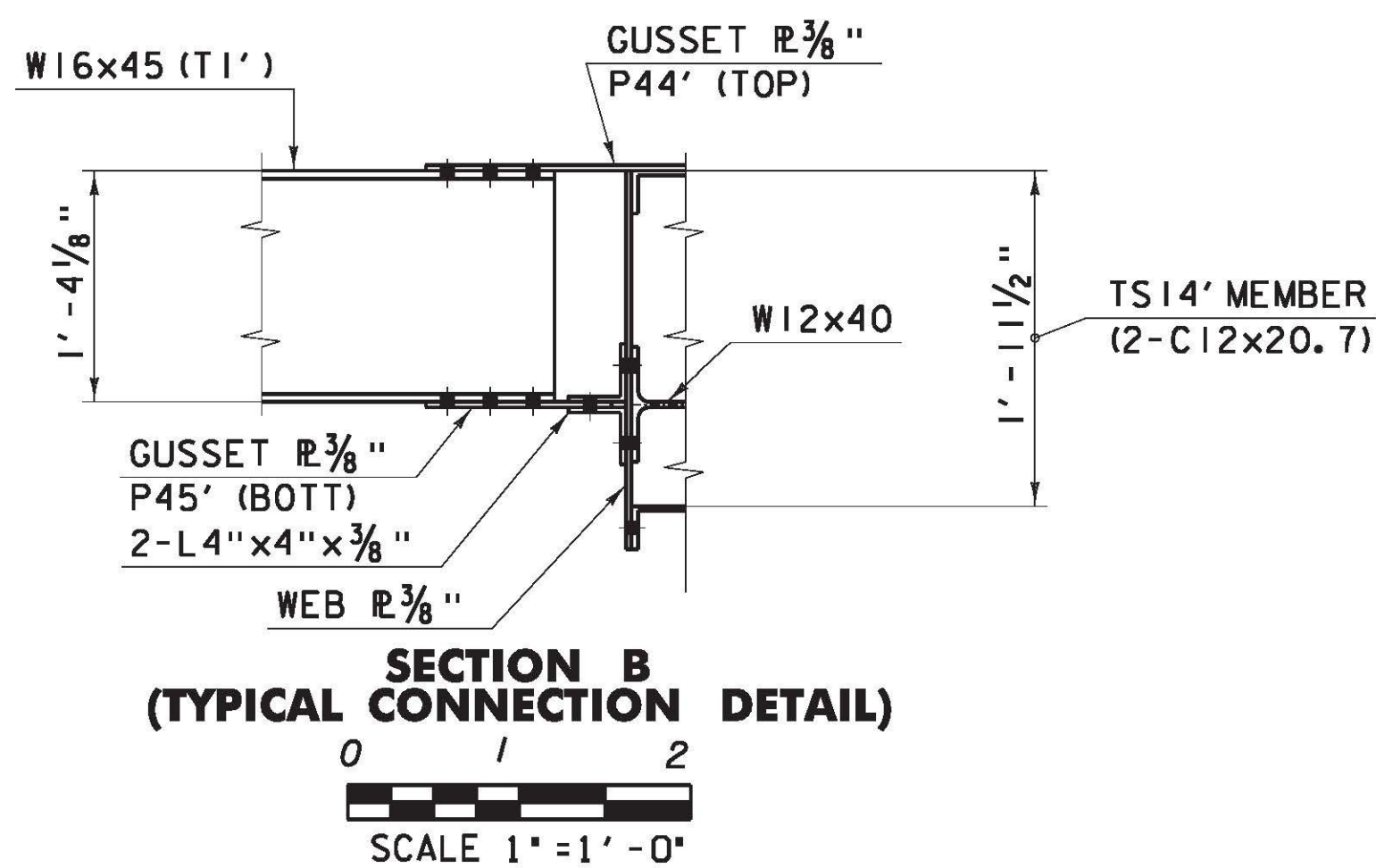
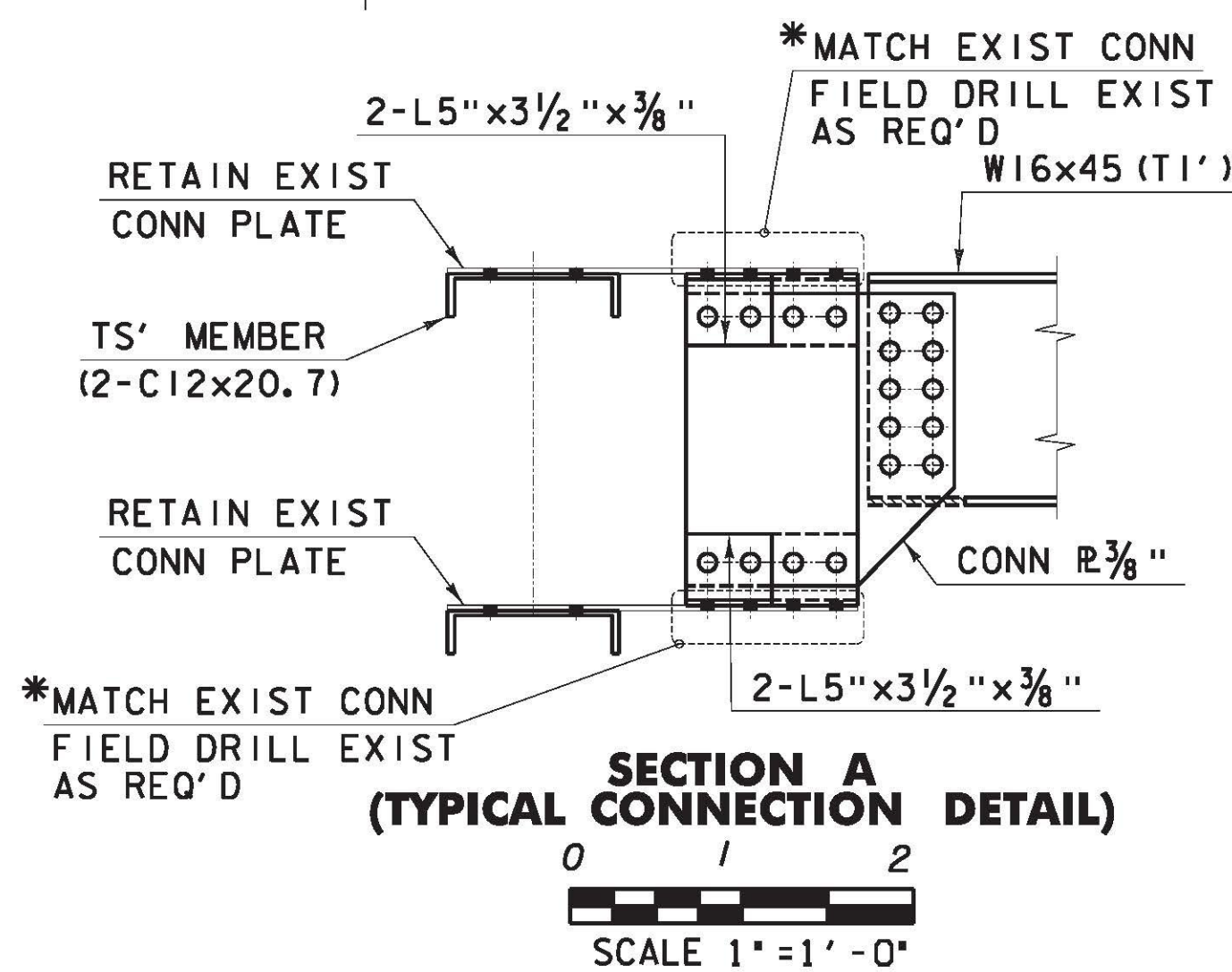


FILE NAME = V:\AP\projects\161\BRIDGE\WORK\161\BRIDGE DESIGN\960892\_top\_lat.dtl.dgn  
 DATE/TIME = 3/14/2013  
 USER = 3293



TOP LATERAL BRACE DETAIL AT LOCATION U8 TO U9 (AS SHOWN)  
 LOCATION U9 TO U10 (OPPOSITE HAND)



**NOTES:**

- FOR FRAMING PLAN AND SECTIONS, SEE DWG NO ST1 & ST19.
  - FOR ADDITIONAL INFORMATION, SEE SHEET E1, 15, 16, 19 & 20 FROM THE 1929 FABRICATION DRAWINGS.
  - MEMBER DESIGNATIONS TAKEN FROM 1929 FABRICATION DRAWINGS
- \* -SEE CONNECTION INSTALLATION METHODS  
 "A" = NEW JOINT NUMBER OR NEW MEMBER DESIGNATION.

**TOP LATERAL  
 DETAIL AT  
 U8 TO U9  
 U9 TO U10**

PROJECT NAME: RICHMOND	PLOT DATE: 3/14/2013
PROJECT NUMBER: STP-RS 0284(III)	DRAWN BY: PKR
FILE NAME: z90c092_top_lat_dtl.dgn	CHECKED BY: VC/KM
PROJECT LEADER: DJV	SHEET X OF X
DESIGNED BY: RH	
DWG. NO.: ST18	

