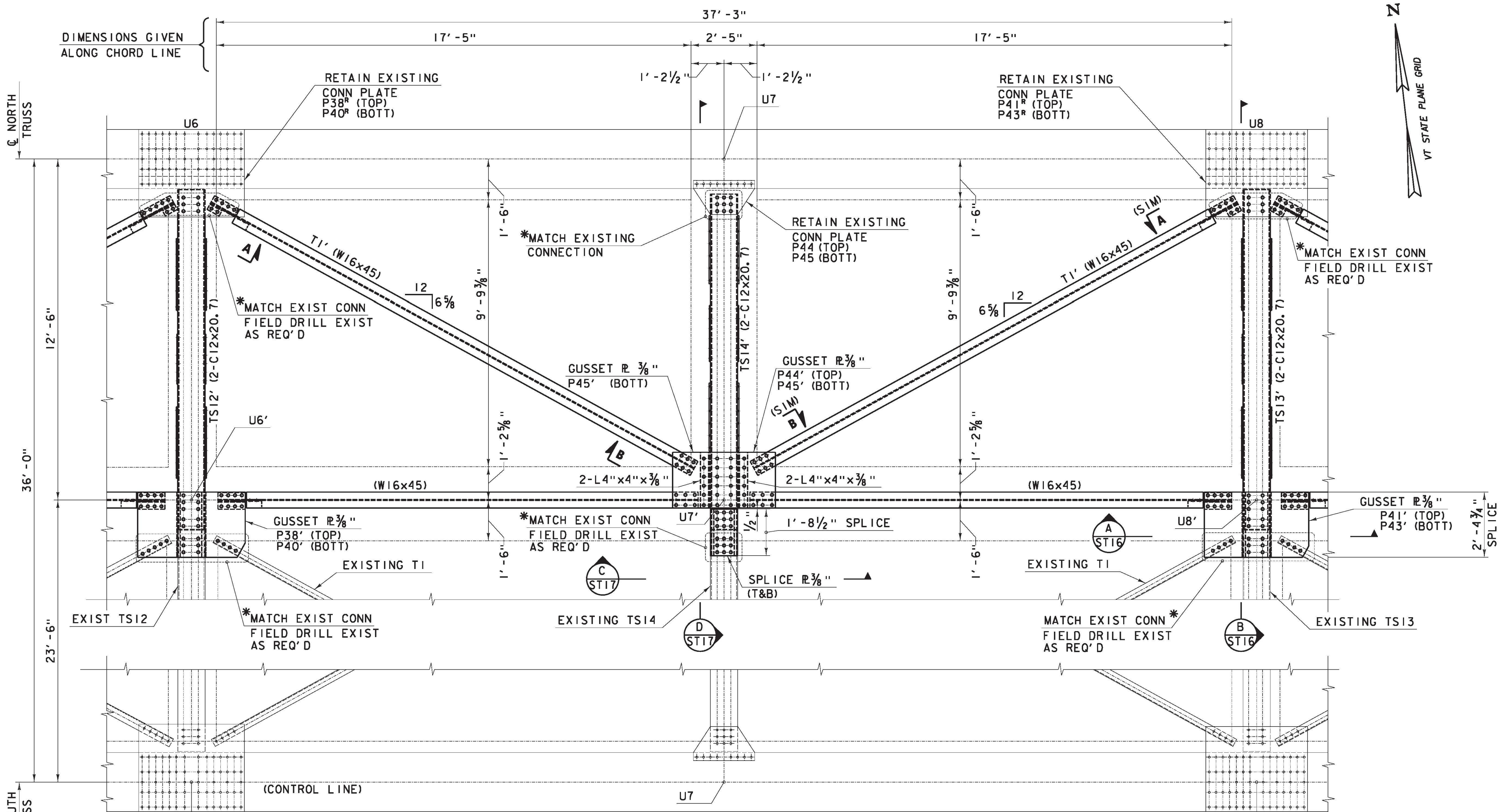
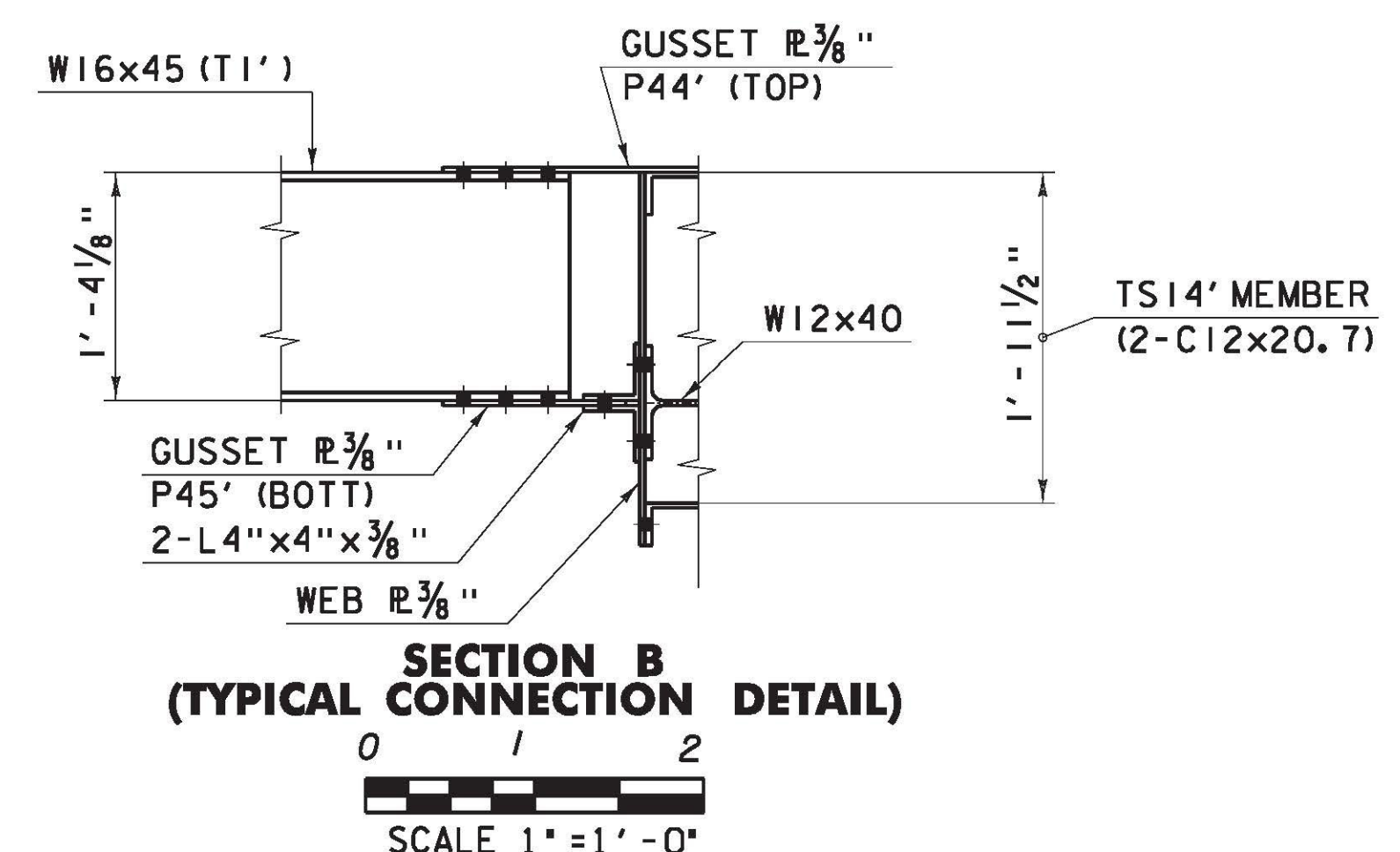
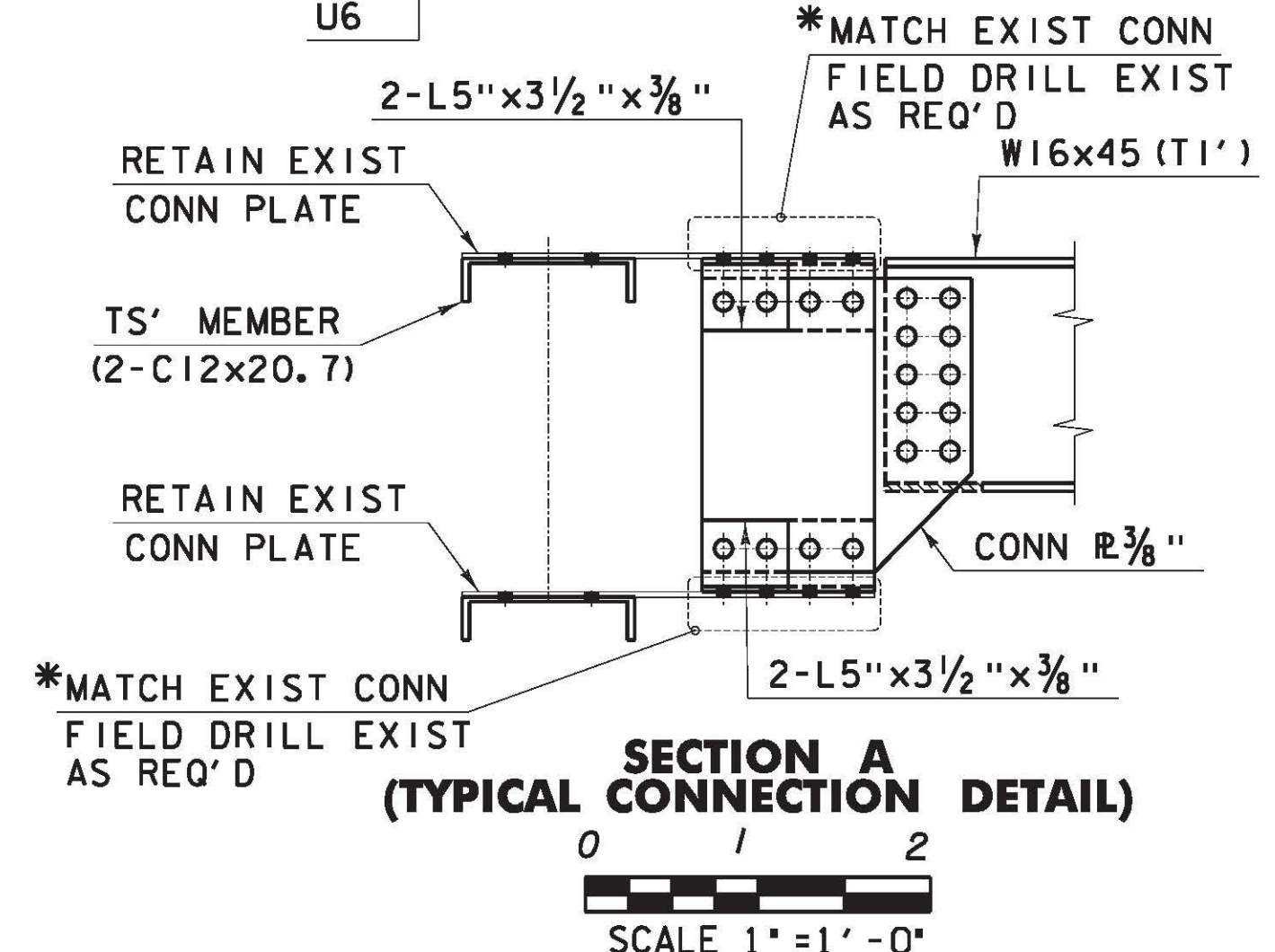


FILE NAME = V:\AP\projects\161\BRIDGE\WORK\161\BRIDGE DESIGN\96092_top_lat.dtl.dgn
 DATE/TIME = 3/14/2013
 USER = 3293



**TOP LATERAL BRACE DETAIL AT LOCATION U6 TO U8 (AS SHOWN)
 LOCATION U12 TO U10 (OPPOSITE HAND)**



- NOTES:**
- FOR FRAMING PLAN AND SECTIONS, SEE DWG NO ST1, ST16 & ST17.
 - FOR ADDITIONAL INFORMATION, SEE SHEET E1, 1, 2, 4, 16, 19 & 20 FROM THE 1929 FABRICATION DRAWINGS.
 - MEMBER DESIGNATIONS TAKEN FROM 1929 FABRICATION DRAWINGS
- * -SEE CONNECTION INSTALLATION METHODS
 "A" = NEW JOINT NUMBER OR NEW MEMBER DESIGNATION.

**TOP LATERAL
 DETAIL AT
 U6 TO U8
 U12 TO U10**

PROJECT NAME:	RICHMOND
PROJECT NUMBER:	STP-RS 0284(III)
FILE NAME:	z90c092_top_lat.dtl.dgn
DESIGNED BY:	RH
DWG. NO.:	ST15
PLOT DATE:	3/14/2013
DRAWN BY:	PKR
CHECKED BY:	VC/KM
SHEET	X OF X