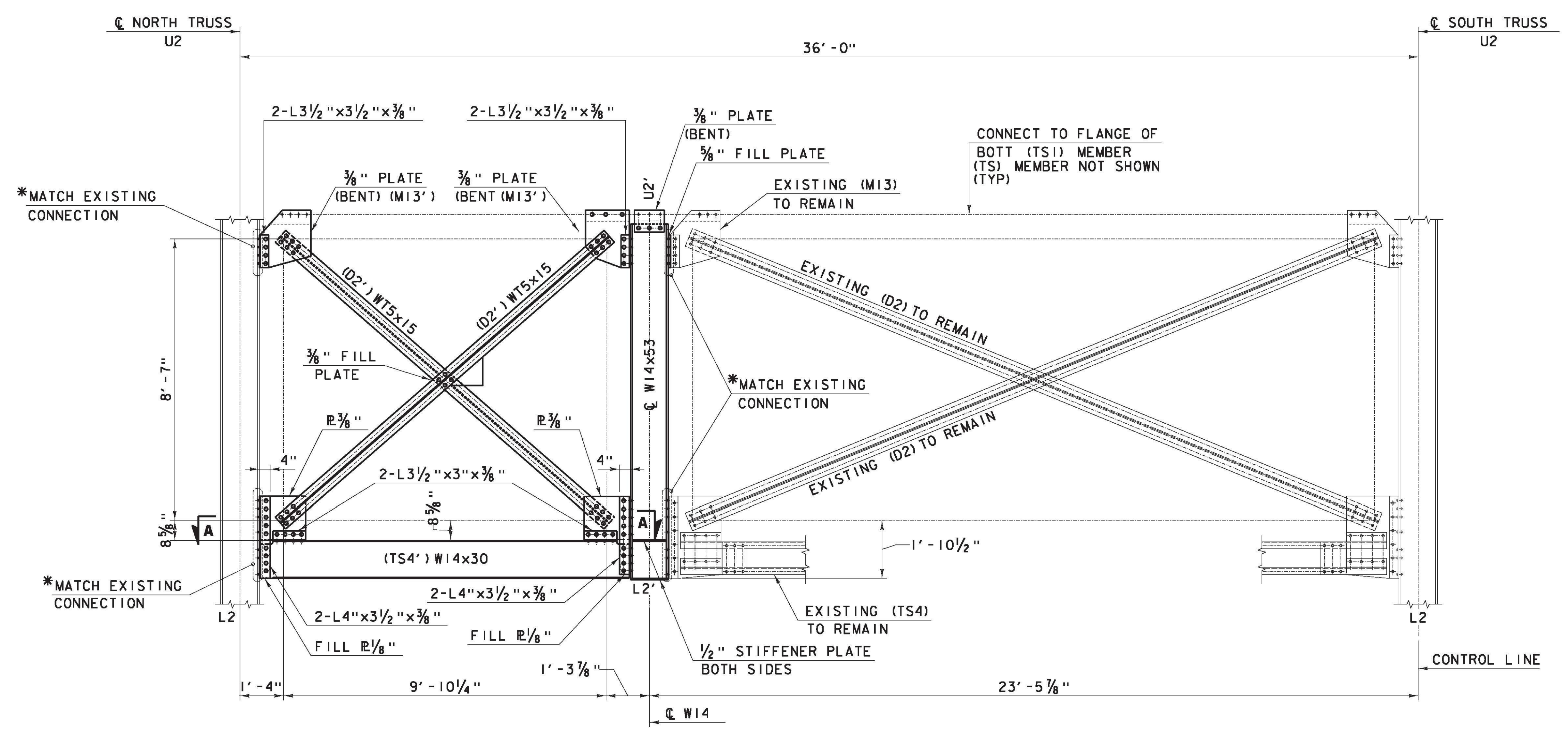
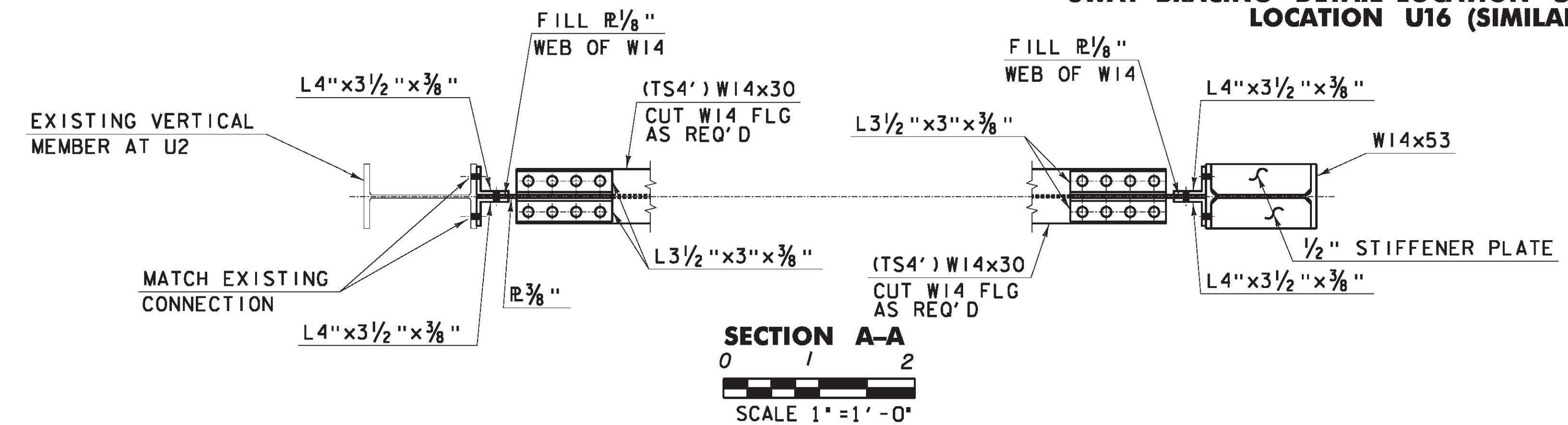


FILE NAME = V:\P\Projects\141\22076\CADD\MSTN\BRIDGE WORK\WBS (1-16) BRIDGE DESIGN\960892\_port.dwg  
 DATE/TIME = 3/14/2013  
 USER = 3293



**SWAY BRACING DETAIL LOCATION U2 (AS SHOWN)  
 LOCATION U16 (SIMILAR)**



**SECTION A-A**  
 0 1 2  
 SCALE 1" = 1'-0"

0 2 4  
 SCALE 1/2" = 1'-0" (UON)

- NOTES**
- FOR FRAMING PLAN AND SECTIONS, SEE DWG NO ST1.
  - FOR ADDITIONAL INFORMATION, SEE SHEET E1,2,3,17A,19 FROM THE 1929 FABRICATION DRAWINGS.
  - MEMBER DESIGNATIONS TAKEN FROM 1929 FABRICATION DRAWINGS
- \* -SEE CONNECTION INSTALLATION METHODS  
 "A" = NEW JOINT NUMBER OR NEW MEMBER DESIGNATION.

<b>SWAY BRACING DETAILS AT LOCATION U2 AND U16</b>	
PROJECT NAME:	RICHMOND
PROJECT NUMBER:	STP-RS 0284(III)
FILE NAME:	z90c092_port.dtl.dgn
PROJECT LEADER:	DJV
DESIGNED BY:	RH
DWG. NO.:	ST4
PLOT DATE:	3/14/2013
DRAWN BY:	PKR
CHECKED BY:	VC/KM
SHEET	X OF X