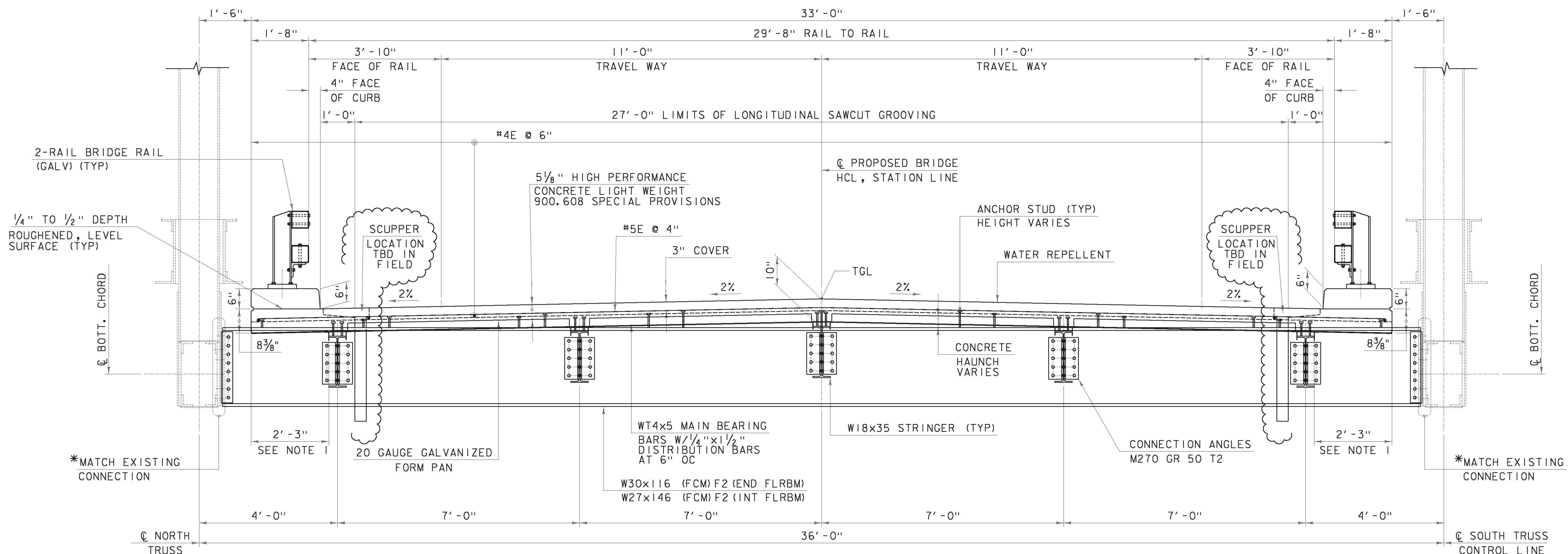
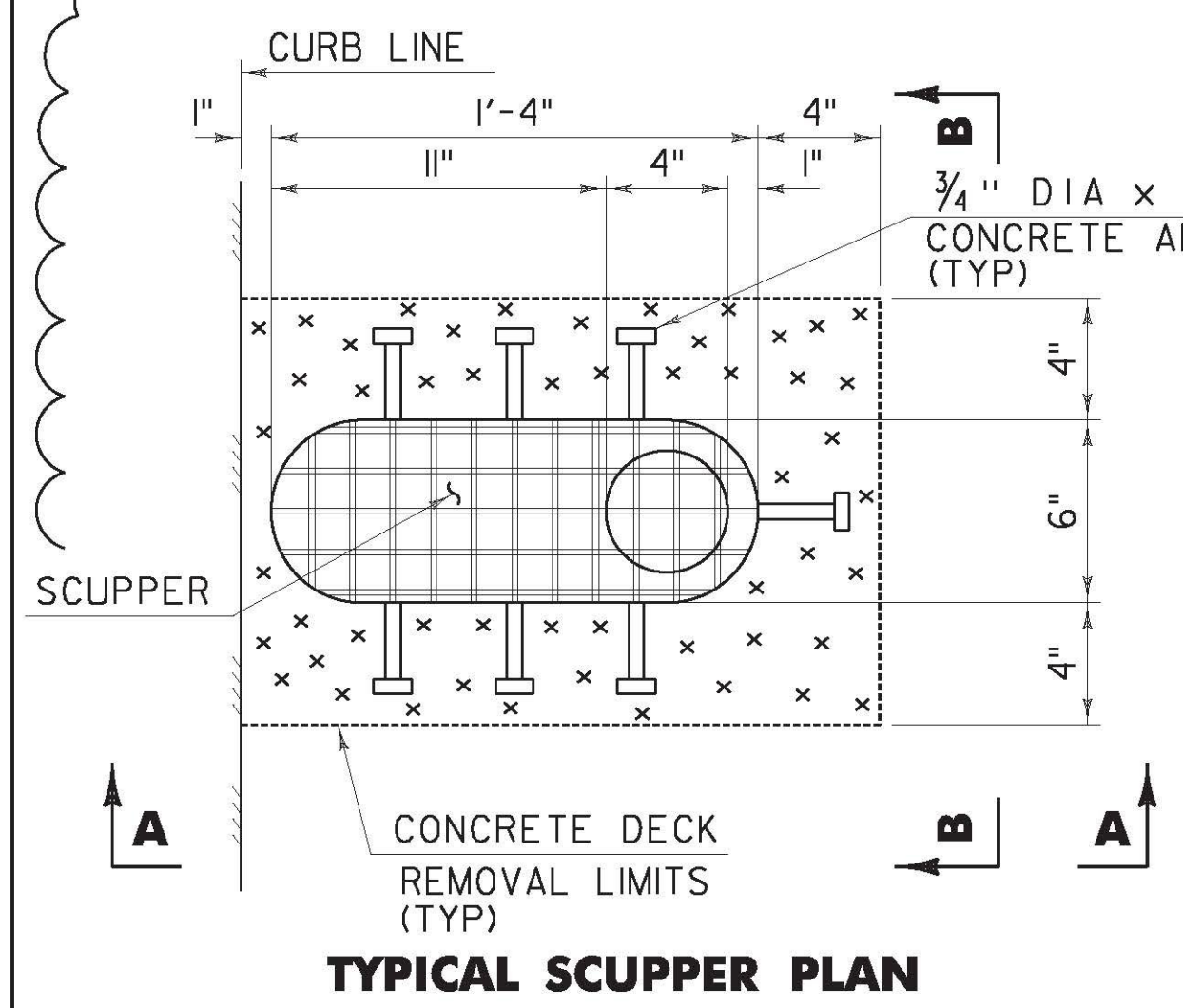


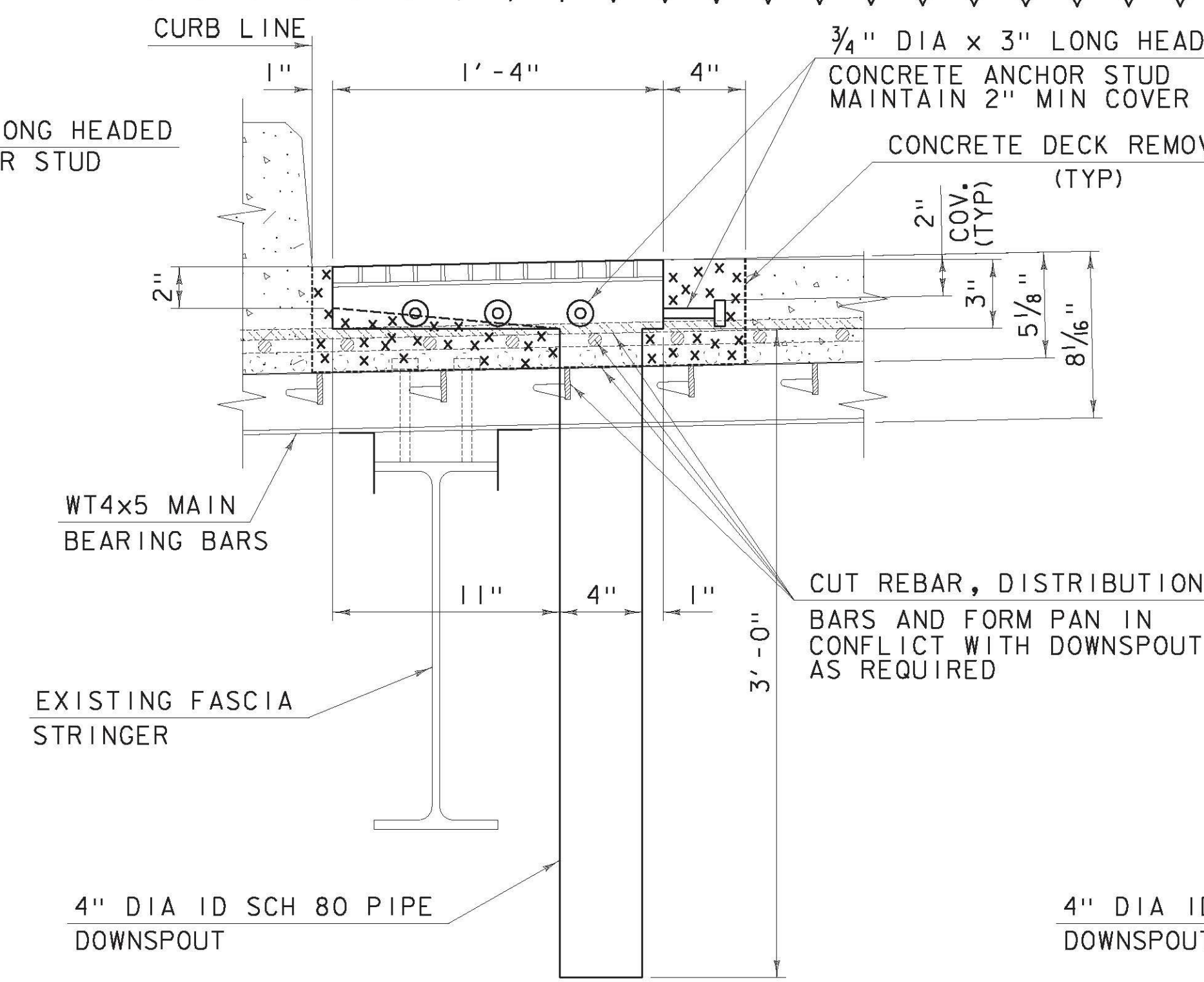
FILE NAME = V:\P\Projects\ANY\K2\22076\CADD\MSTN\Submissions\AS-BUILT PLAN SET\CADD DRAWINGS\WBS (1-16) BRIDGE\926092_rtrnsrvs.sect.dgn
 DATE/TIME = 9/10/2013
 USER = 3293



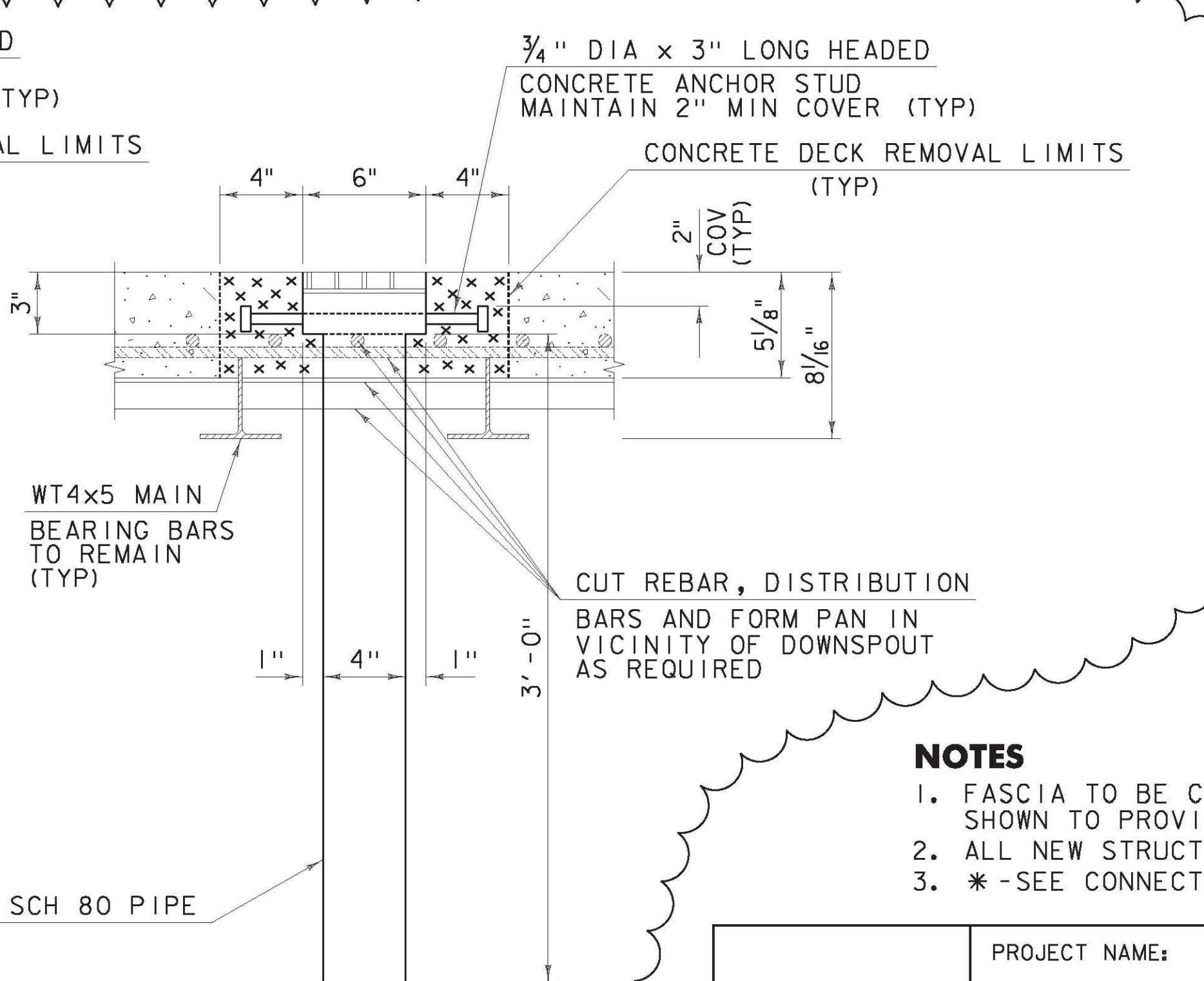
TYPICAL BRIDGE SECTION



TYPICAL SCUPPER PLAN

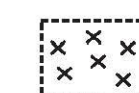


SECTION A-A



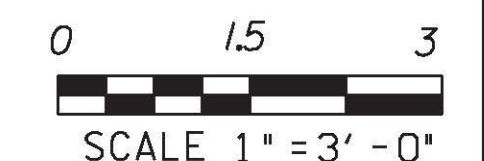
SECTION B-B

SCUPPER NOTES

 - LIMITS OF CONCRETE DECK REMOVAL. AREA TO BE REPLACED WITH HIGH STRENGTH ELASTOMERIC CONCRETE.
 MAINTAIN 2" COVER FROM TOP OF CONCRETE DECK AND SCUPPER ANCHOR STUDS.
 LOCATE SCUPPER DOWNSPOUT BETWEEN WT4x5 MAIN BEARING BARS.

NOTES

- FASCIA TO BE CONCRETE FILLED FULL DEPTH TO LIMITS SHOWN TO PROVIDE FOR RAILING ANCHORAGE.
- ALL NEW STRUCTURAL STEEL AASHTO M270 GR 50 (UON).
- * - SEE CONNECTION INSTALLATION METHODS.



TYPICAL BRIDGE SECTION

PROJECT NAME:	RICHMOND
PROJECT NUMBER:	STP-RS 0284(III)
FILE NAME:	z90c092 trnsrvs sect.dgn
PROJECT LEADER:	DJV
DESIGNED BY:	RH
DWG. NO.:	S4
PLOT DATE:	9/10/2013
DRAWN BY:	PKR
CHECKED BY:	VC/KM
SHEET	3 OF 10