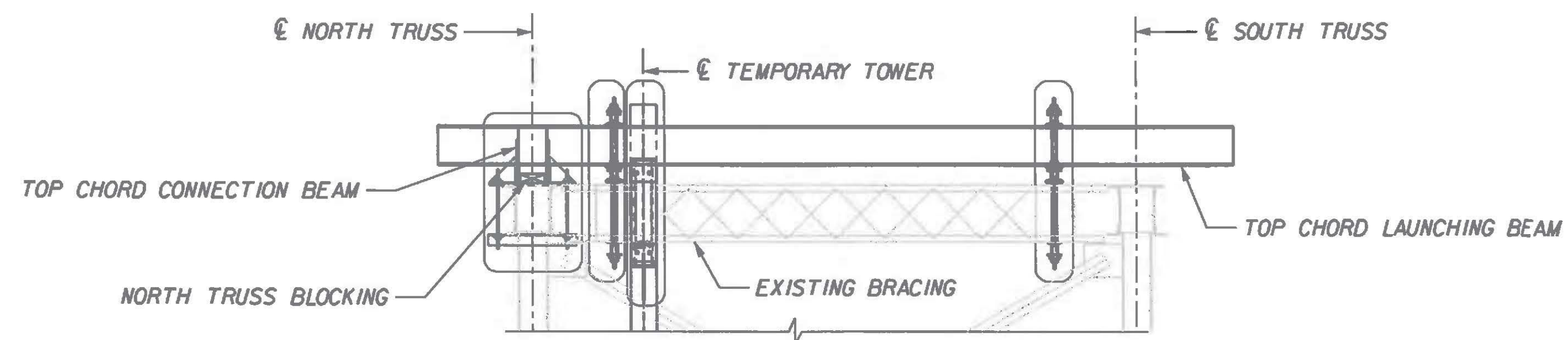


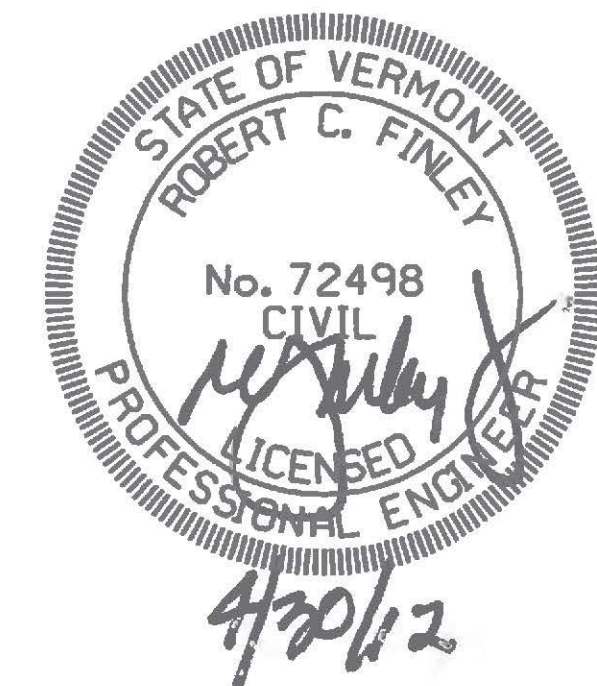
ISOMETRIC VIEW

STAGE 15:

- A. INSTALL TOP CHORD LAUNCHING BEAMS AND TIGHTEN 1" DIAMETER RODS SNUG TIGHT.
- B. INSTALL BLOCKING BETWEEN EXISTING NORTH TRUSS AND TOP CHORD CONNECTION BEAM.
- C. TIGHTEN 1" DIAMETER RODS TO SPECIFIED TENSION.



TOP CHORD LAUNCHING DETAIL



Revision	Drawn By	Date	Description	Revision	Drawn By	Date	Description	Name	Date	Project	Title	Sheet No.
1	JLB	04/25/12	Removed Mabey Truss.					Drawn By: DAL	01/12	RICHMOND TRUSS WIDENING STATE OF VERMONT AGENCY OF TRANSPORTATION CHITTENDEN COUNTY U.S. ROUTE 2 BRIDGE NO. 24	CONSTRUCTION MANUAL CONSTRUCTION SEQUENCE (8 OF 22)	CM-II
							Designed By: RAA	12/11				
							Approved By: JMP	12/11				