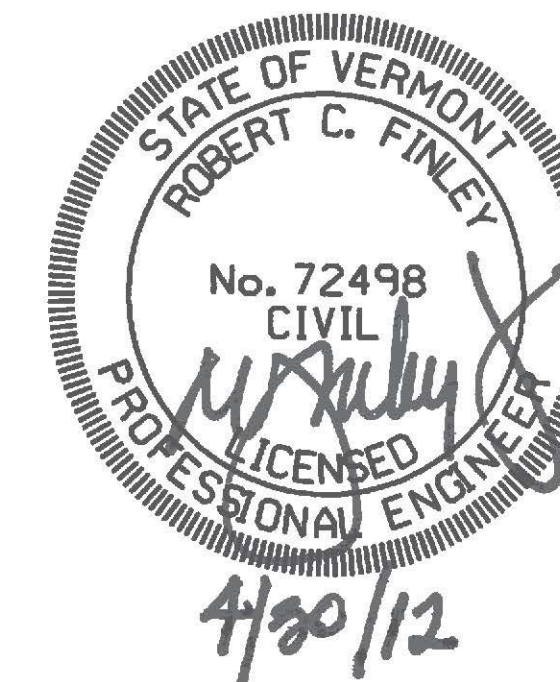
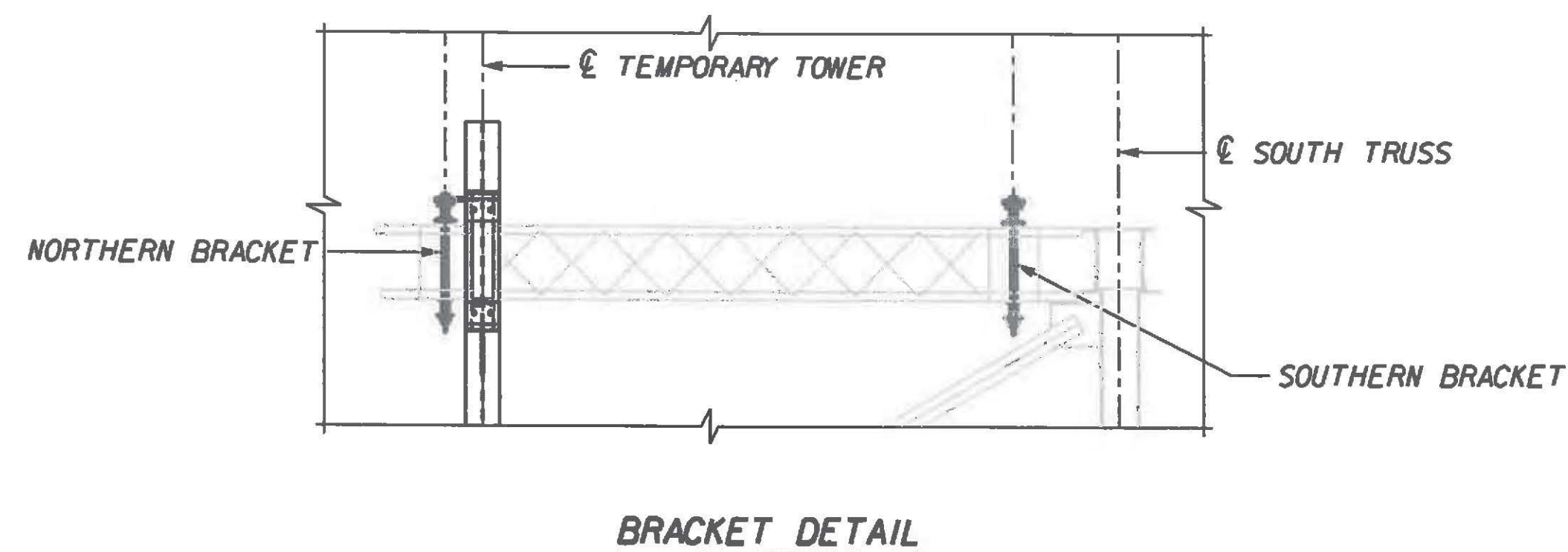


**STAGE 12:**

A. INSTALL TEMPORARY TOWERS AT TRUSS NODES L2-U2, L4-U4, L6-U6, L8-U8, L10-U10, U2-U12, U4-U14, U6-U16.

**STAGE 13:**

A. INSTALL THE SOUTHERN BRACKETS FOR THE TOP CHORD LAUNCHING BEAM ONTO EXISTING TRANSVERSE BRACING, TENSIONING THE 1" DIAMETER RODS SNUG TIGHT.  
 B. INSTALL THE NORTHERN BRACKETS FOR THE TOP CHORD LAUNCHING BEAM ONTO EXISTING TRANSVERSE BRACING, TIGHTENING THE 1" DIAMETER ROD NUTS TO CONTACT.



Revision	Drawn By	Date	Description	Revision	Drawn By	Date	Description	Name	Date	Project	Title	Sheet No.
1	JLB	04/25/12	Removed Mabey Truss.					Drawn By: DAL	01/12	1589 Metropolitan Blvd. Tallahassee, FL 32308 850-894-1600 Fax: 850-894-1614	RICHMOND TRUSS WIDENING STATE OF VERMONT AGENCY OF TRANSPORTATION CHITTENDEN COUNTY U.S. ROUTE 2 BRIDGE NO. 24	CONSTRUCTION MANUAL CONSTRUCTION SEQUENCE (6 OF 22)
							Designed By: RAA	12/11				
							Approved By: JMP	12/11				