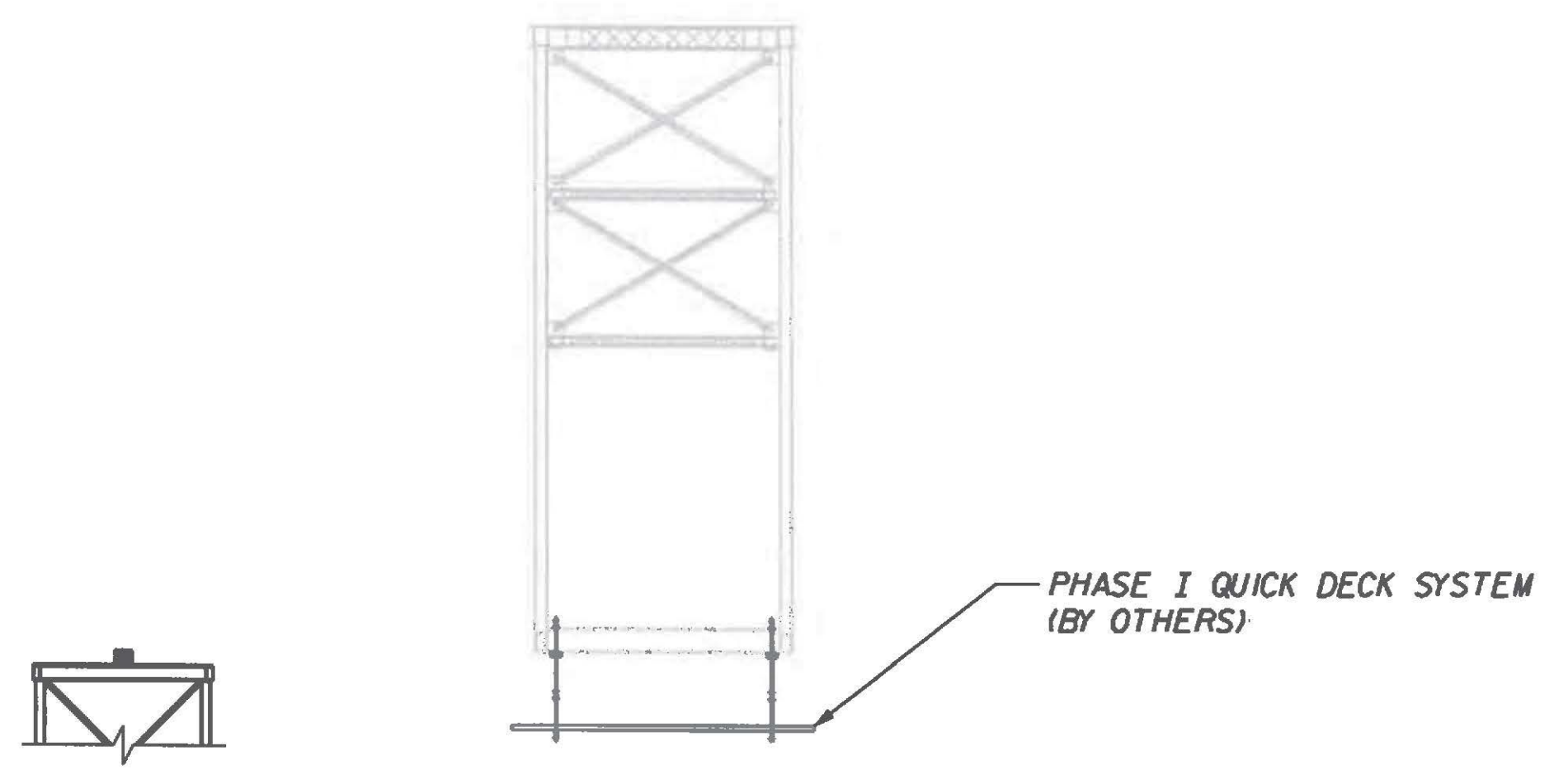


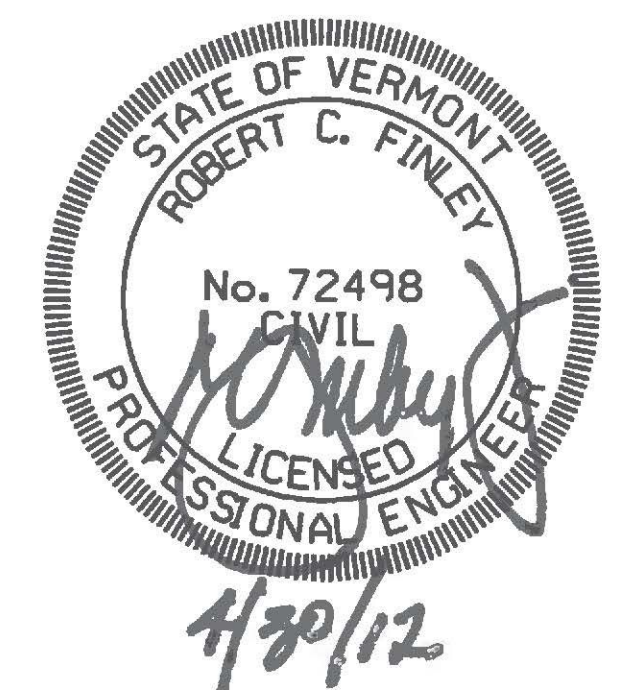
PLAN

- STAGE 4:**
 - A. CONSTRUCT CAUSEWAYS AT EAST AND WEST ABUTMENTS OF THE BRIDGE. (NOTE: THIS STAGE MAY BEGIN AT ANY TIME PRIOR THIS STAGE.)
- STAGE 5:**
 - △ A. CONSTRUCT PILE BENTS (DESIGNED BY OTHERS).
- STAGE 6:**
 - △ A. INSTALL HEADER BEAMS AND SPREADER BEAMS ON TEMPORARY BENTS AS SHOWN IN THE FINLEY TEMPORARY WORKS DRAWINGS.
- STAGE 7:**
 - A. ELIMINATED

- △ **STAGE 8:**
 - A. INSTALL PHASE I OF QUICK DECK SYSTEM.



SECTION B-B



Revision	Drawn By	Date	Description	Revision	Drawn By	Date	Description	Name	Date	Projects	Title	Sheet No.	
1	JLB	04/24/12	Removed Mabey Truss Piling. Added Temporary Bents. Added Stages 7 & 8.					Drawn By: DAL	01/12	1589 Metropolitan Blvd. Tallahassee, FL 32308 850-894-1600 Fax: 850-894-1614 FINLEY Engineering Group, Inc.	RICHMOND TRUSS WIDENING STATE OF VERMONT AGENCY OF TRANSPORTATION CHITTENDEN COUNTY U.S. ROUTE 2 BRIDGE NO. 24	CONSTRUCTION MANUAL CONSTRUCTION SEQUENCE (2 OF 22)	CM-05
							Designed By: RAA	12/11					
							Approved By: JMP	12/11					

Plotted By: robert.alonso

4/30/2012 02:54PM

G:\Richmond_Design\Build\CADD\Temporary_Works\Construction Manual\CM05_ConstSeq02.dgn