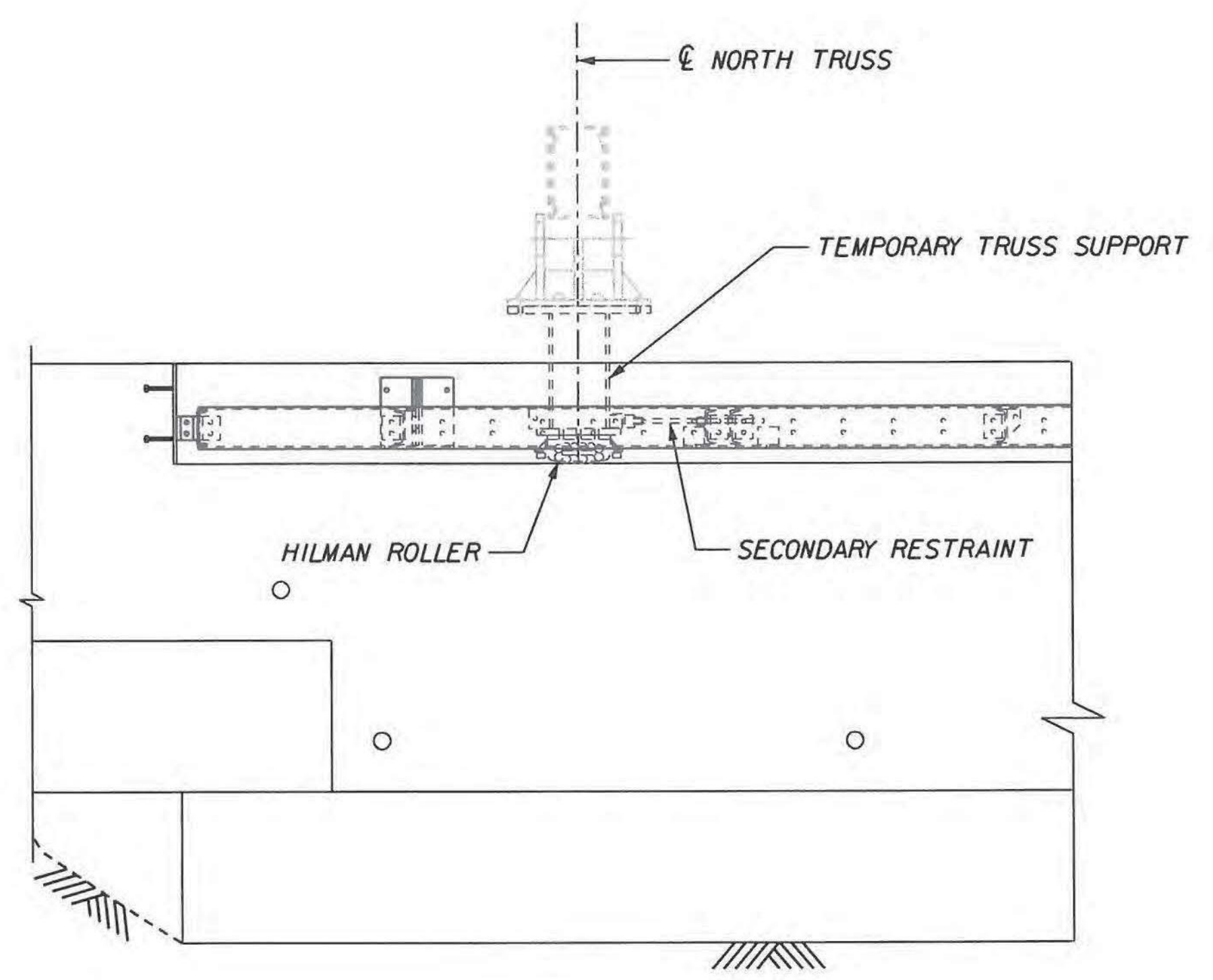
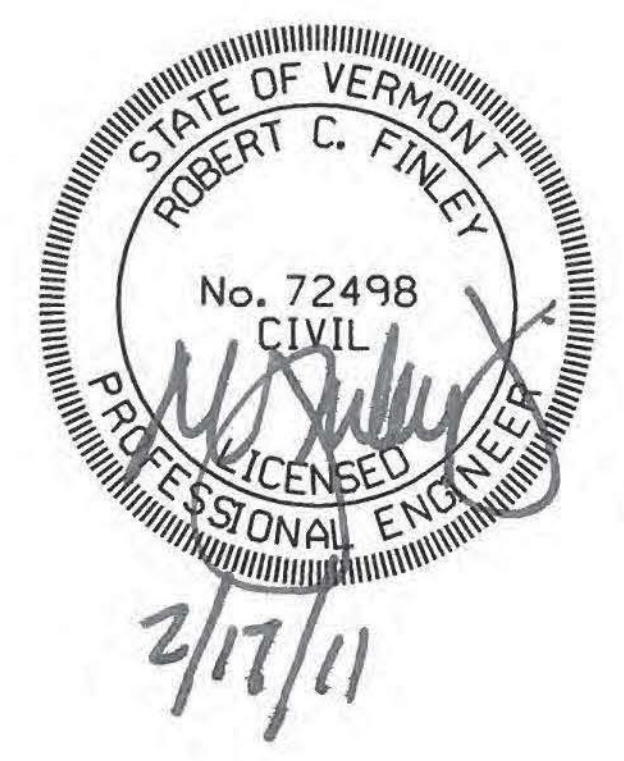


ELEVATION



ABUTMENT DETAIL

- STAGE 1:**
- A. TEMPORARILY SUPPORT TRUSS ON FALSEWORK AT NODES L1 AND L17.
 - B. DEMOLISH EXISTING ABUTMENTS AND CONSTRUCT NEW ABUTMENTS BENEATH TRUSS.
- STAGE 2:**
- A. INSTALL PERMANENT BEARINGS BENEATH SOUTH TRUSS
 - B. INSTALL TEMPORARY TRUSS SUPPORTS ON HILMAN ROLLERS FOR NORTH TRUSS WITH SECONDARY RESTRAINTS ENGAGED. (SEE ABUTMENT DETAIL)
 - C. TRANSFER TRUSS SUPPORT FROM NODE L1 TO WEST ABUTMENT.
 - D. TRANSFER TRUSS SUPPORT FROM NODE L17 TO EAST ABUTMENT.
- STAGE 3:**
- A. REMOVE CONCRETE DECK FROM EXISTING TRUSS. (THIS INCLUDES LONGITUDINAL STRINGERS)



Revision	Drawn By	Date	Description	Revision	Drawn By	Date	Description	Drawn By:	Name	Date	Project:	Title:	Sheet No.		
								DAL	DAL	01/12	1589 Metropolitan Blvd. Tallahassee, FL 32308 850-894-1600 Fax: 850-894-1614 FINLEY Engineering Group, Inc.	RICHMOND TRUSS WIDENING STATE OF VERMONT AGENCY OF TRANSPORTATION CHITTENDEN COUNTY U.S. ROUTE 2 BRIDGE NO. 24	CONSTRUCTION MANUAL CONSTRUCTION SEQUENCE (1 OF 22)	CM-04	
							JMP	JMP	12/11						
								RCF	RCF	12/11					