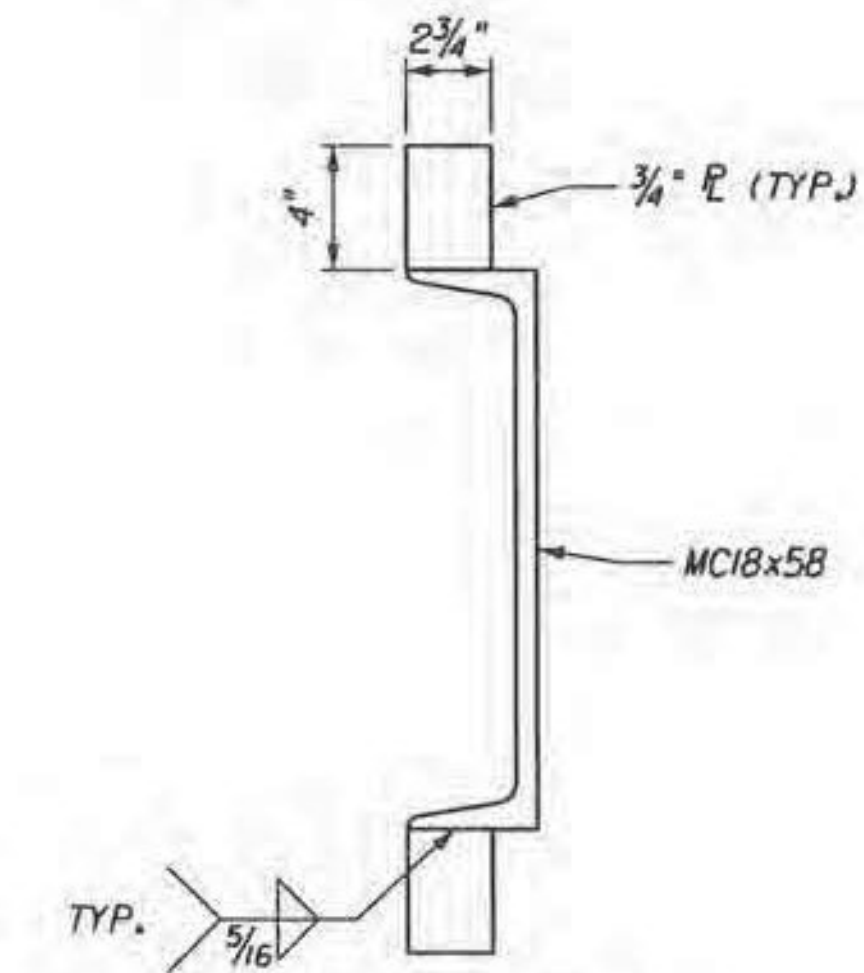
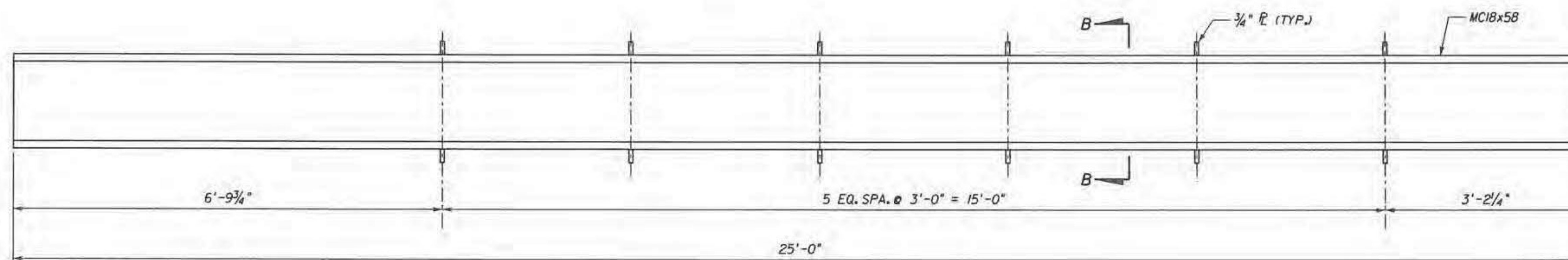


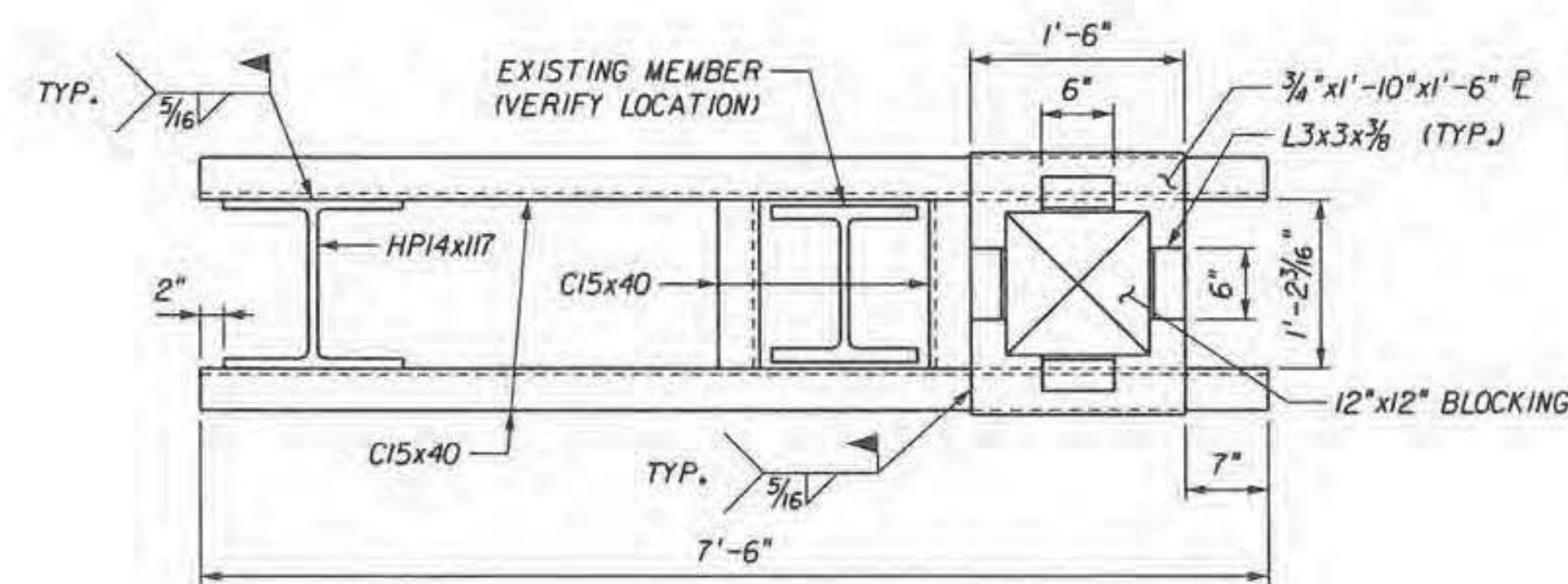
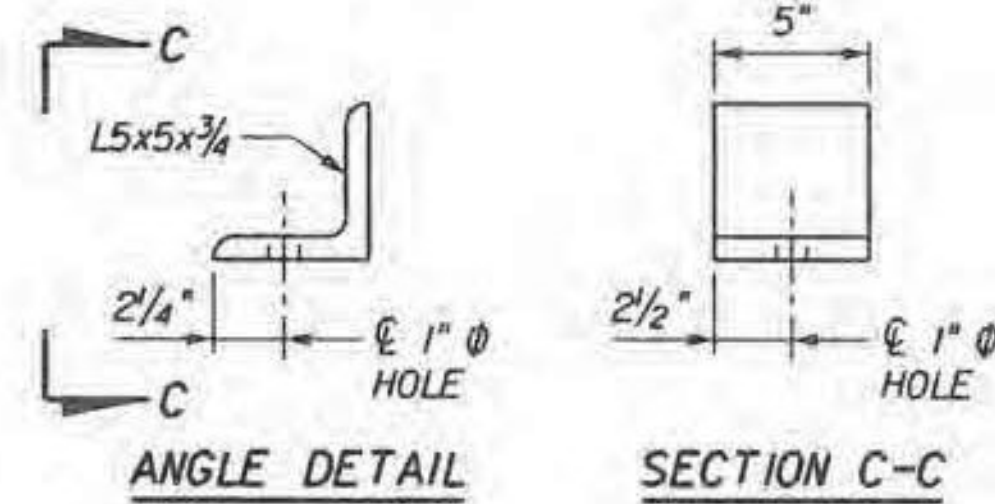
SECTION A-A

ABUTMENT JACKING CHANNEL
(2 REQ'D EACH ABUTMENT)



SECTION B-B

GUIDE CHANNEL



TEMPORARY END TRUSS SUPPORT BRACE
(WEST ABUTMENT ONLY)



2/17/12

- NOTES:**
- FOR LOCATION OF TEMPORARY END TRUSS SUPPORT BRACE AND TRUSS END SUPPORT BRACE, SEE "ABUTMENT CONNECTION DETAILS" SHEET.
 - FOR LOCATION OF ABUTMENT JACKING CHANNEL AND GUIDE CHANNEL, SEE "ABUTMENT DETAILS" SHEET.

Revision	Drawn By	Date	Description	Revision	Drawn By	Date	Description	Name	Date	Project	Title	Sheet No.
								Drawn By:	JLB	01/12	RICHMOND TRUSS WIDENING STATE OF VERMONT AGENCY OF TRANSPORTATION CHITTENDEN COUNTY U.S. ROUTE 2 BRIDGE NO. 24	24
							Designed By:	NMC	01/12			
							Approved By:	JMP	01/12			