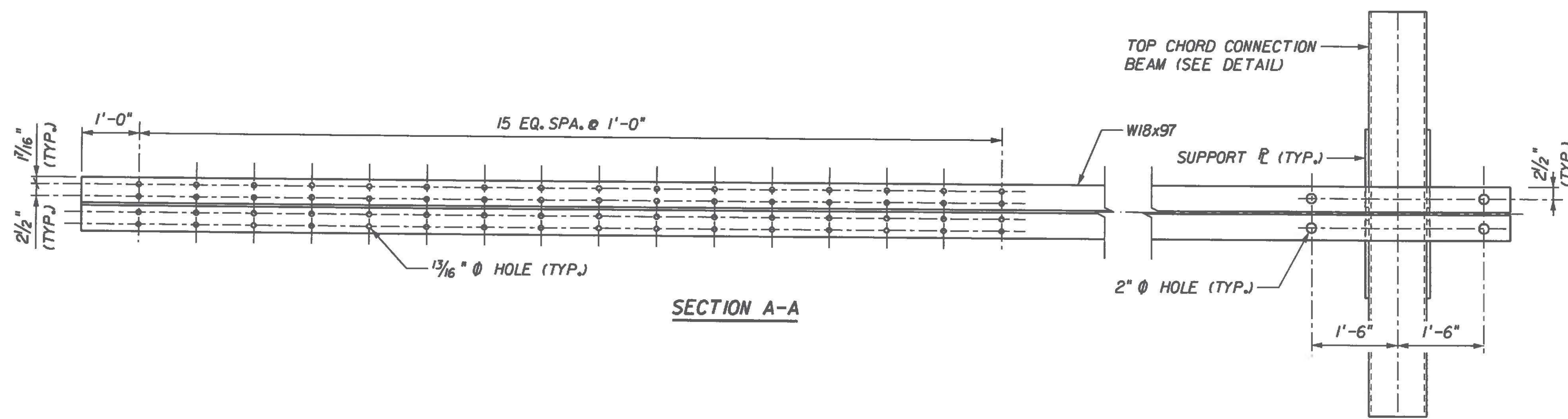
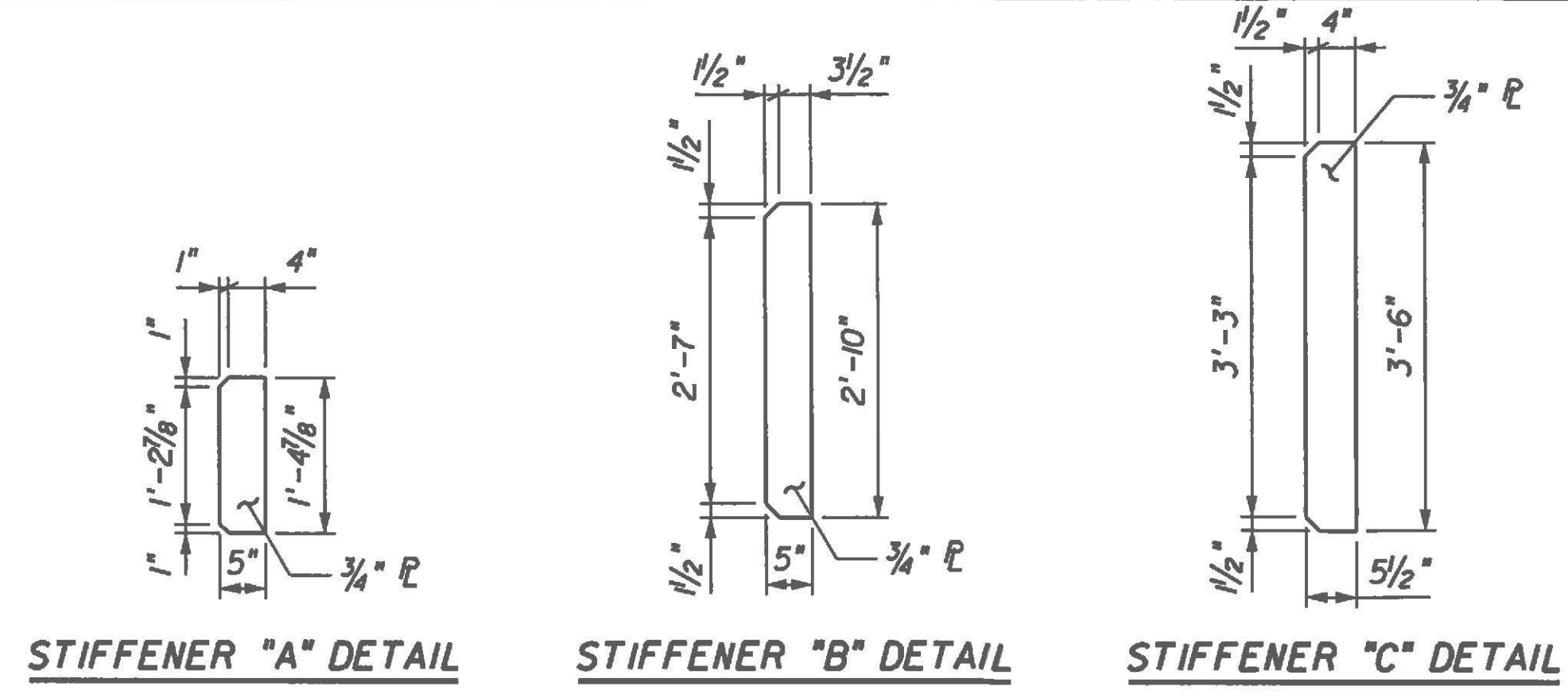


TOP CHORD LAUNCHING BEAM



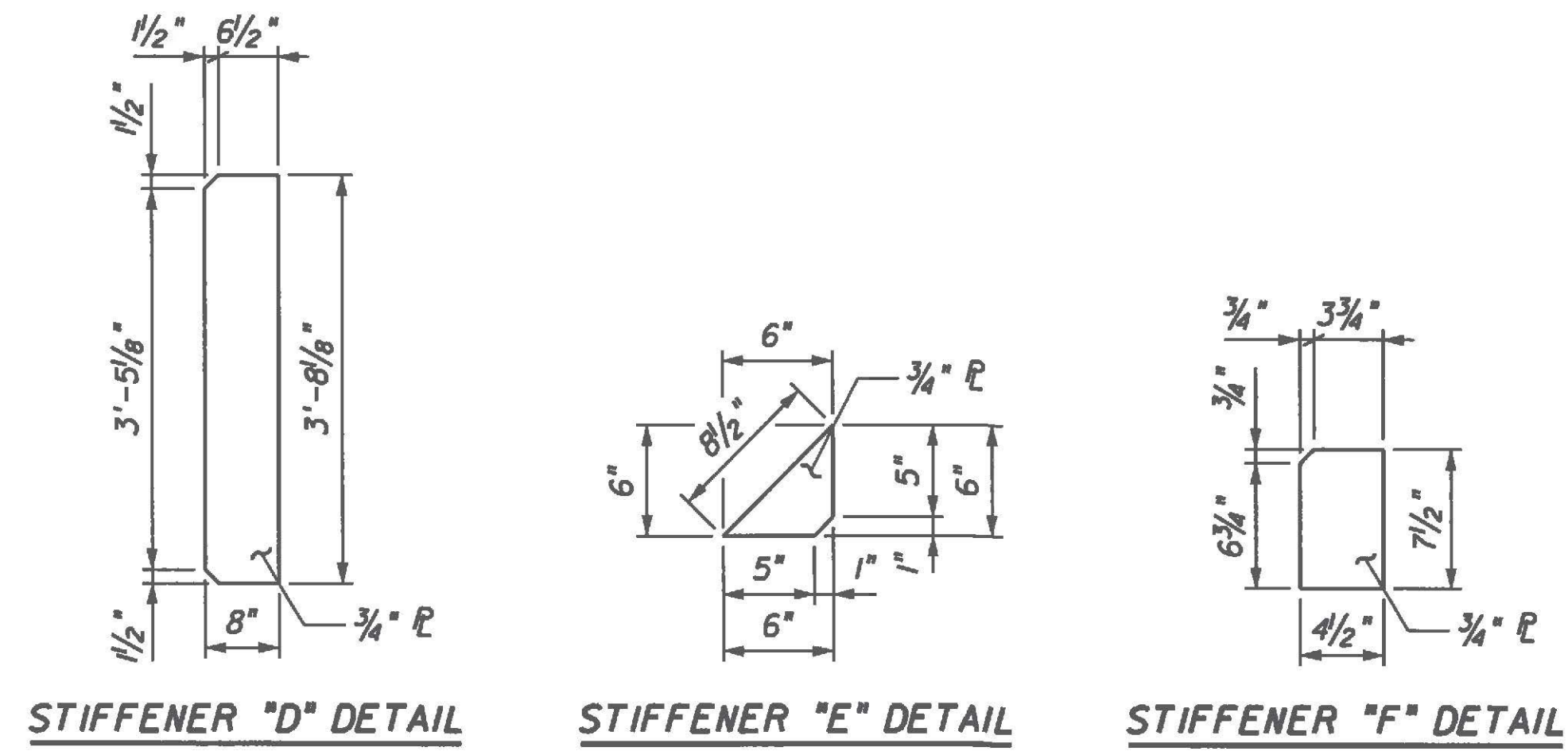
SECTION A-A



STIFFENER "A" DETAIL

STIFFENER "B" DETAIL

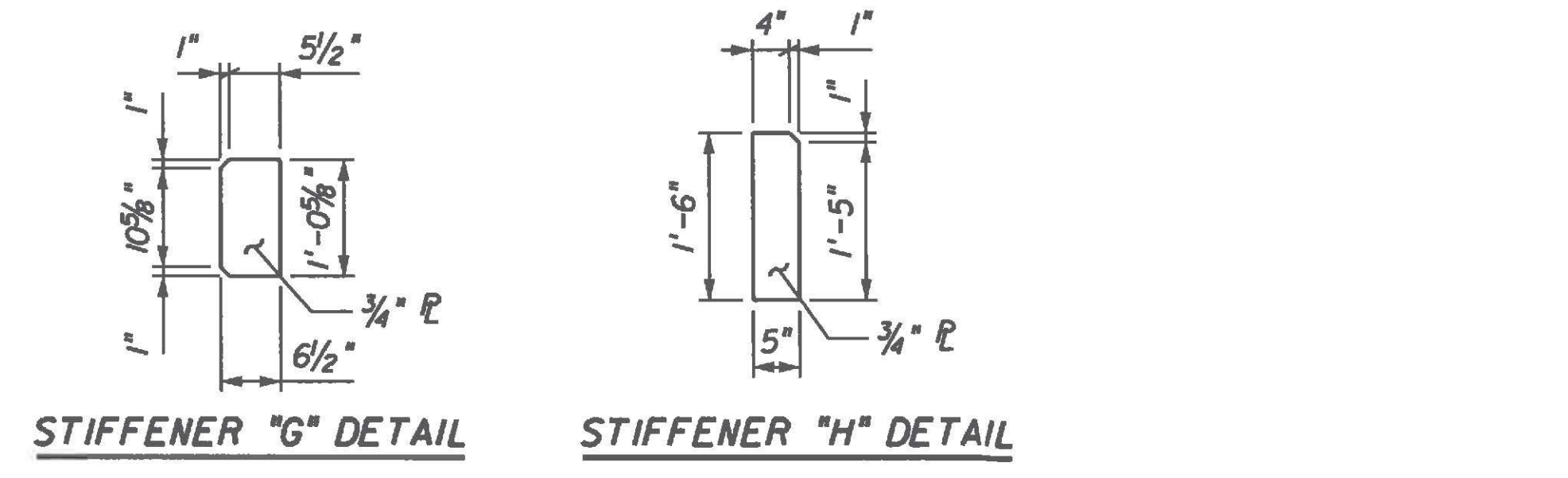
STIFFENER "C" DETAIL



STIFFENER "D" DETAIL

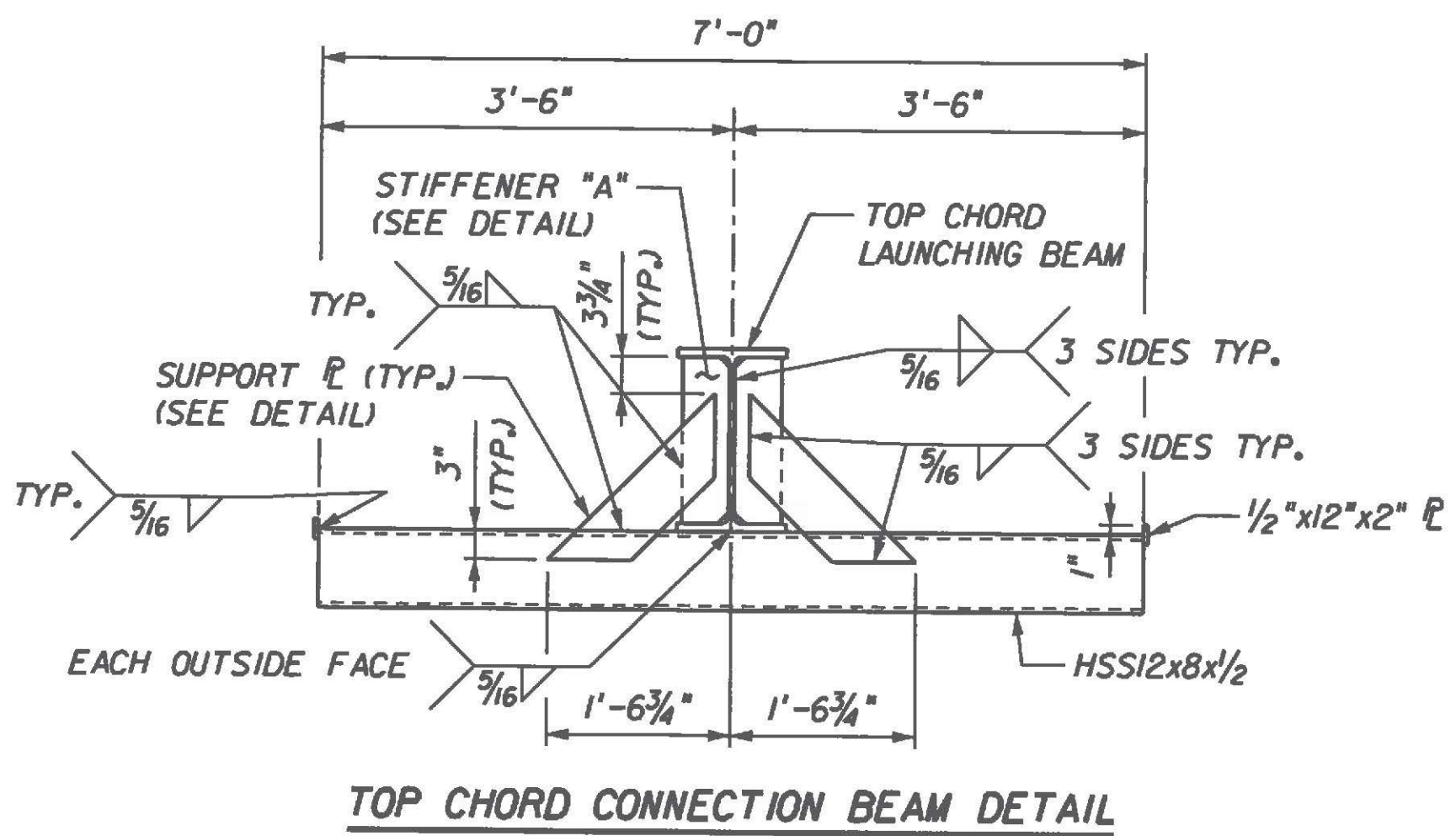
STIFFENER "E" DETAIL

STIFFENER "F" DETAIL

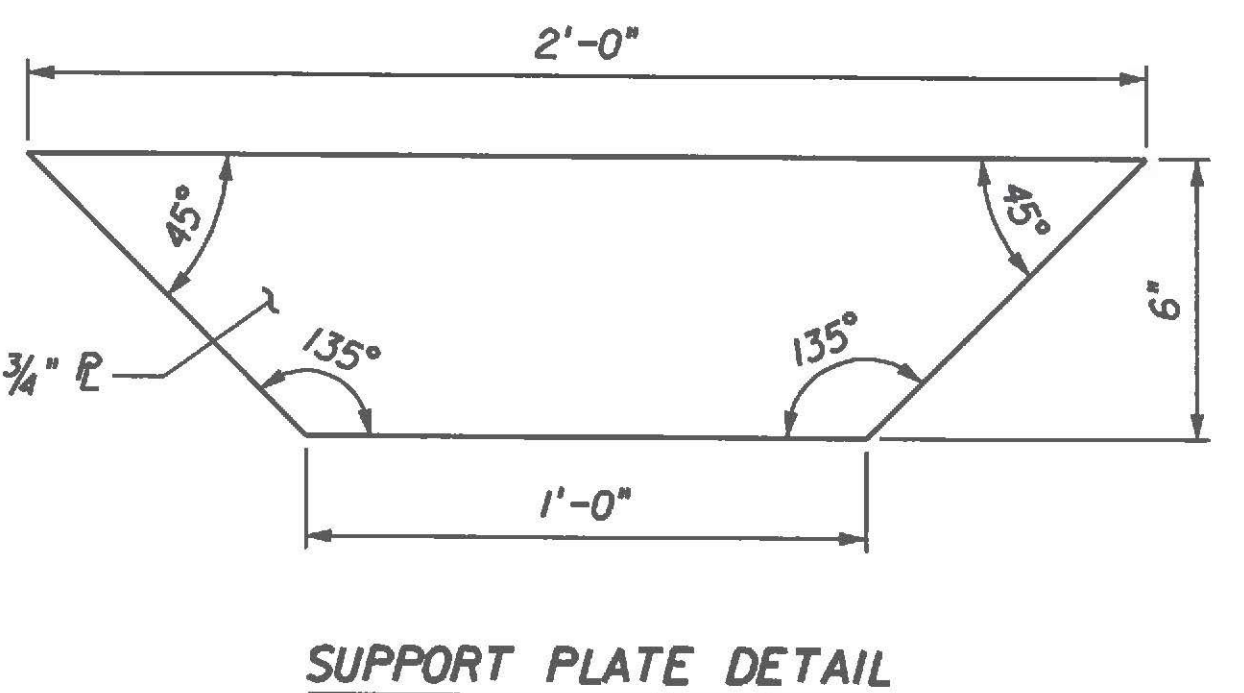


STIFFENER "G" DETAIL

STIFFENER "H" DETAIL

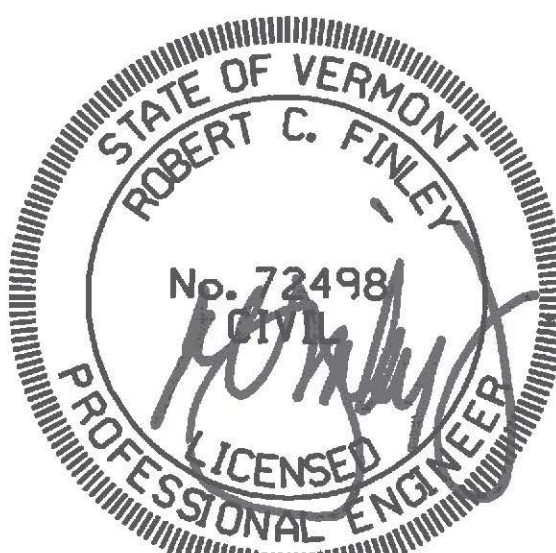


TOP CHORD CONNECTION BEAM DETAIL



SUPPORT PLATE DETAIL

- NOTES:**
1. FOR LOCATION OF TOP CHORD LAUNCHING BEAM, SEE "ISOMETRIC MEMBER LAYOUT" SHEET.
 2. FOR LOCATION OF STIFFENERS "B" THROUGH "F", SEE "MEMBER DETAILS (2 OF 4)" SHEET.
 3. FOR LOCATION OF STIFFENERS "G" AND "H", SEE "MEMBER DETAILS (3 OF 4)" SHEET.



1/20/12

Revision	Drawn By	Date	Description	Revision	Drawn By	Date	Description	Name	Date	Project	Title	Sheet No.	
1	JLB	04/24/12	Removed Mabey Bridge Lateral Brace Detail.					Drawn By:	JLB	01/12	1589 Metropolitan Blvd. Tallahassee, FL 32308 850-894-1600 Fax: 850-894-1614	16	
							Designed By:	NMC	01/12	Project:			RICHMOND TRUSS WIDENING STATE OF VERMONT AGENCY OF TRANSPORTATION CHITTENDEN COUNTY U.S. ROUTE 2 BRIDGE NO. 24
							Approved By:	JMP	01/12	Title:			