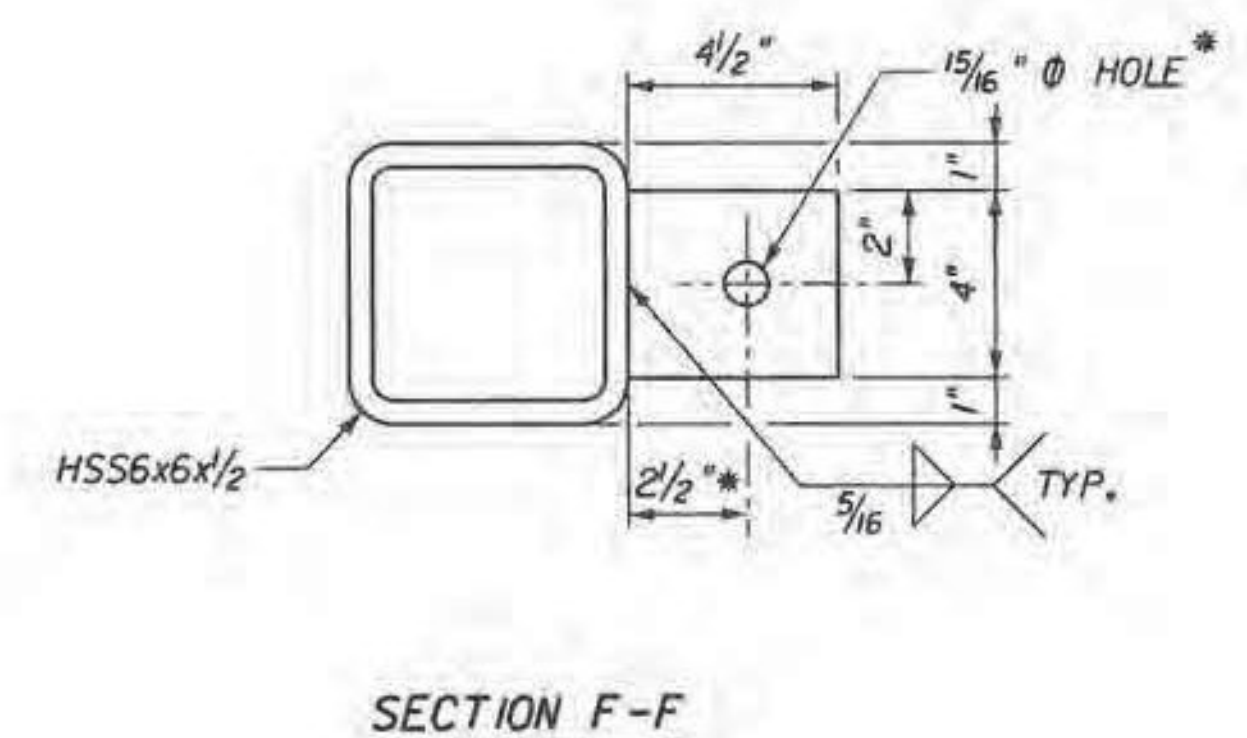
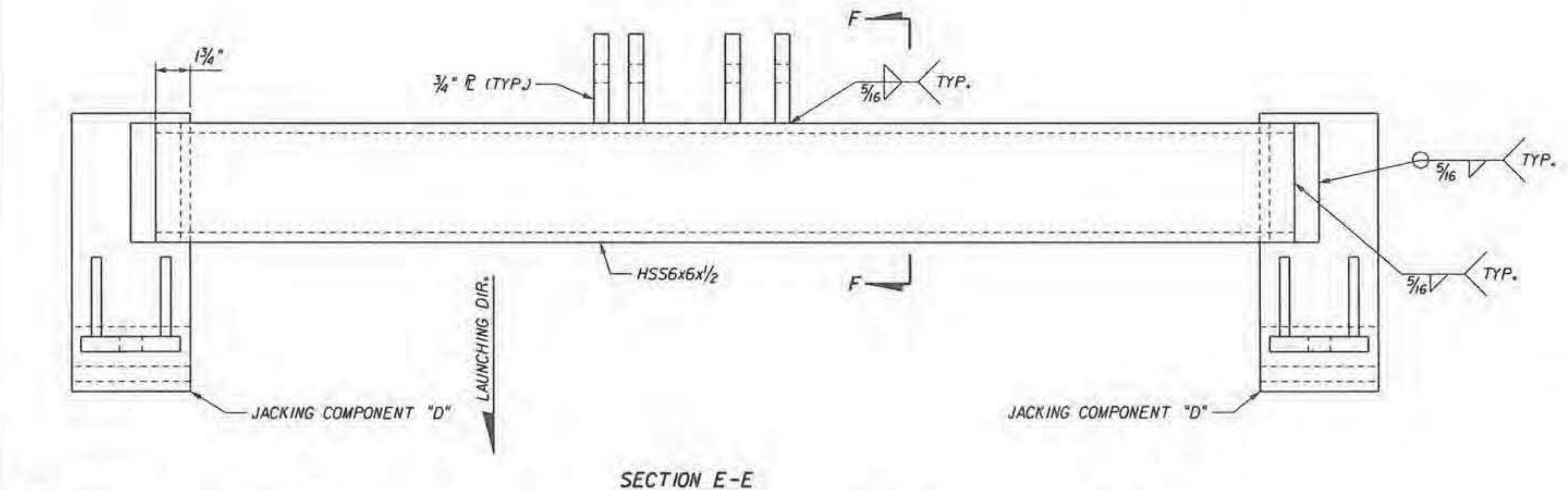
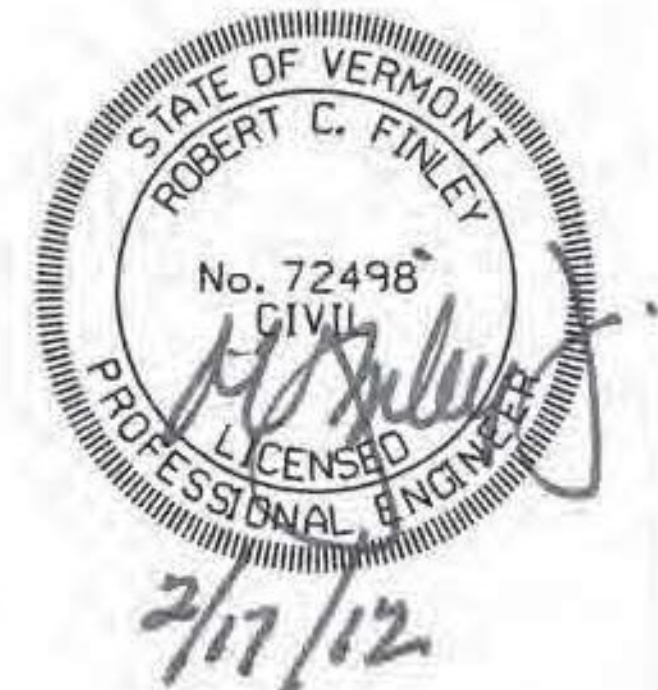


\*\* PLATE SHALL BE INSTALLED ON OPPOSITE SIDE FOR SECOND "COMPONENT D". SEE "DETAIL A" FOR ORIENTATION.



NOTES:  
 1. FOR LOCATION OF JACKING COMPONENTS "A", "B", "C", "D", SEE "TOP CHORD JACKING DETAILS" AND "BOTTOM CHORD JACKING DETAILS" SHEETS.  
 2. FOR LOCATION OF DETAIL "A", SEE "TOP CHORD JACKING DETAILS" SHEET.  
 \* FINAL DIMENSION TO BE VERIFIED AFTER SELECTING HYDRAULIC CYLINDER.



Revision	Drawn By	Date	Description	Revision	Drawn By	Date	Description	Name	Date	Project	Title	Sheet No.	
								Drawn By:	JLB	01/12	RICHMOND TRUSS WIDENING STATE OF VERMONT AGENCY OF TRANSPORTATION CHITTENDEN COUNTY U.S. ROUTE 2 BRIDGE NO. 24	JACKING COMPONENT DETAILS (1 OF 2)	
							Designed By:	NMC	01/12				12
							Approved By:	JMP	01/12				