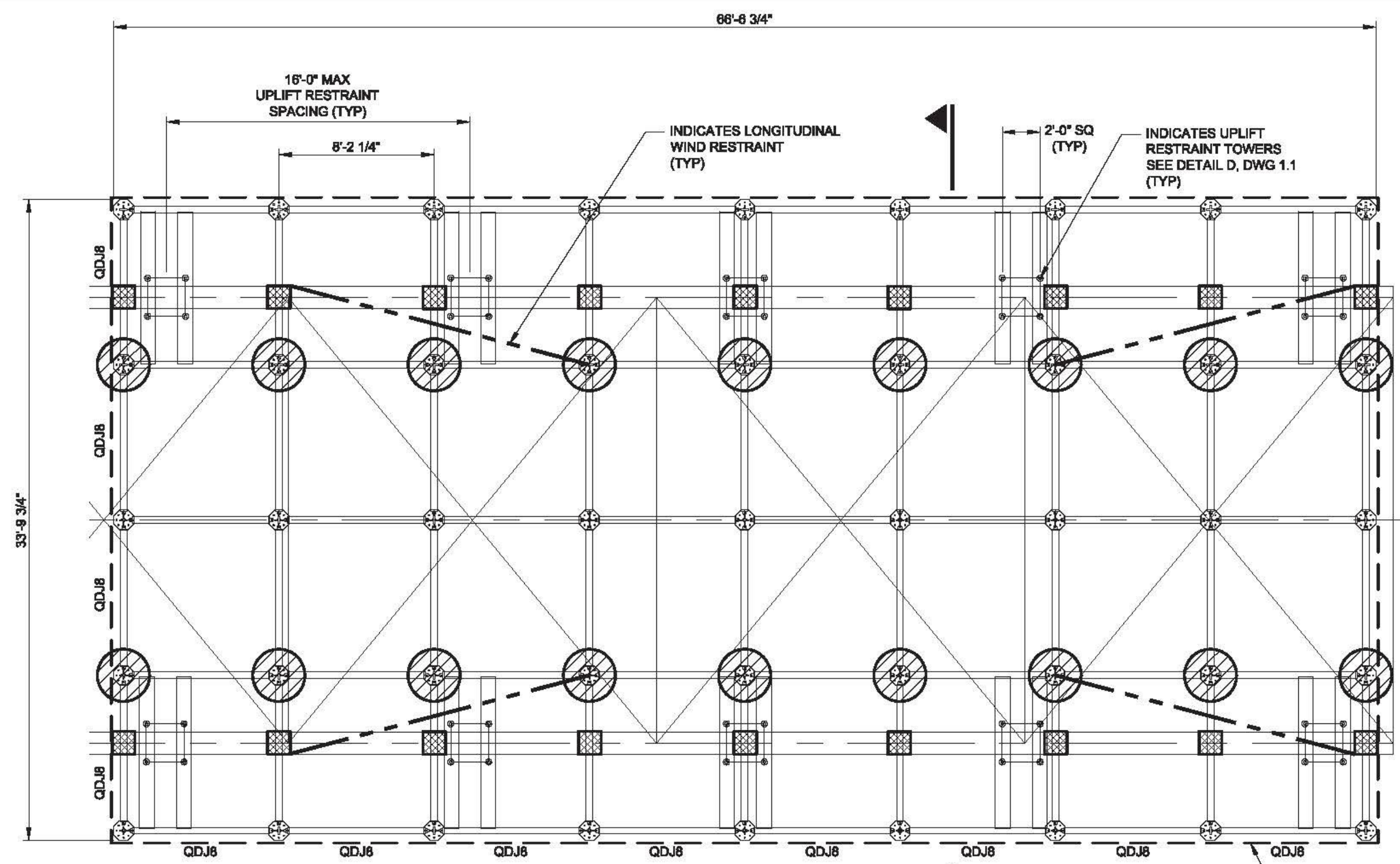


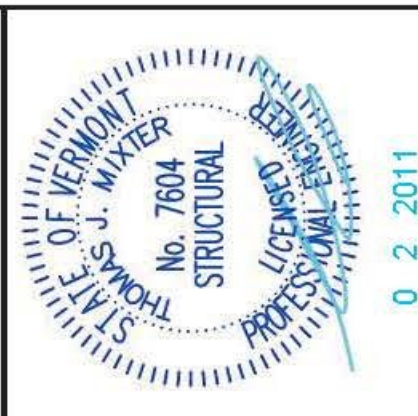
QUIKDECK GENERAL NOTES:

- PROPER USE OF EQUIPMENT**
USER/ERECTOR SHALL READ, UNDERSTAND, AND COMPLY WITH LATEST REVISIONS OF:
 - QUIKDECK SUSPENDED ACCESS SYSTEM SAFETY GUIDELINES SAFWAY SERVICES, LLC PUBLICATION #ORN 1802
 - QUIKDECK SUSPENDED ACCESS SYSTEM ASSEMBLY GUIDE SAFWAY SERVICES, LLC PUBLICATION #ORN 1803
 FOR COPIES OF SAFWAY LITERATURE CONTACT SAFWAY SERVICES, LLC OR GO TO WWW.SAFWAY.COM
- TRAINING**
SAFWAY SERVICES, LLC STRONGLY ADVISES THAT ALL PERSONNEL HOISTING, RIGGING, INSTALLING, RELOCATING, REMOVING OR WORKING ON THE QUIKDECK SUSPENDED ACCESS SYSTEM BE PROPERLY TRAINED. CONTACT SAFWAY SERVICES, LLC FOR MORE INFORMATION REGARDING PROPER TRAINING. SAFWAY SERVICES, LLC RESERVES THE RIGHT TO REQUIRE PERIODIC TRAINING.
- FIELD MODIFICATION OF SCAFFOLD**
THIS SCAFFOLD LAYOUT WAS DEVELOPED FROM LIMITED INFORMATION AND MAY VARY DUE TO ACTUAL FIELD CONDITIONS. CONTACT SAFWAY SERVICES, LLC ENGINEERING FOR APPROVAL PRIOR TO FIELD MODIFICATION.
- DRAWING APPROVAL**
CUSTOMER SHALL REVIEW, VERIFY AND APPROVE ALL DIMENSIONS AND ELEVATIONS PRIOR TO ERECTION OF QUIKDECK SUSPENDED ACCESS SYSTEM.
- AS BUILT DRAWINGS / SITE SURVEYS**
SAFWAY SERVICES, LLC IS NOT RESPONSIBLE FOR ACCURACY OF CUSTOMER PROVIDED DRAWINGS, DIMENSIONS OR MEASUREMENTS OF EXISTING STRUCTURES OR PROPOSED WORK OR SITE SURVEYS TO VERIFY ACCURACY THEREOF.
- SCOPE OF WORK**
UNLESS OTHERWISE SPECIFIED, SAFWAY SERVICES, LLC WILL NOT SUPERVISE, DIRECT, CONTROL OR HAVE AUTHORITY OVER OR BE RESPONSIBLE FOR CONTRACTOR'S MEANS, METHODS, TECHNIQUES, SEQUENCES OR PROCEDURES OF CONSTRUCTION, OR THE SAFETY PRECAUTIONS AND PROGRAMS INCIDENT THERETO, OR FOR ANY FAILURE OF CONTRACTOR TO COMPLY WITH LAWS AND REGULATIONS APPLICABLE TO THE FURNISHING OR PERFORMANCE OF WORK.
- CAPACITY OF STRUCTURAL MEMBERS**
SAFWAY SERVICES, LLC IS NOT RESPONSIBLE FOR CALCULATION, REVIEW, ANALYSIS OR INSPECTION TO ENSURE THAT STRUCTURAL MEMBERS SUSPENDING THE QUIKDECK SUSPENDED ACCESS SYSTEM HAVE ADEQUATE CAPACITY TO WITHSTAND LOADS IMPOSED BY THE QUIKDECK SUSPENDED ACCESS SYSTEM.
- ACCESS**
UNLESS OTHERWISE SPECIFIED, SAFWAY SERVICES, LLC WILL NOT BE RESPONSIBLE FOR PROVIDING ACCESS FOR PERSONNEL ENTERING AND EXITING QUIKDECK SUSPENDED ACCESS SYSTEM.
- LIVE LOADS**
UNLESS OTHERWISE SPECIFIED, LIVE LOADS APPLIED TO QUIKDECK SUSPENDED ACCESS SYSTEM SHALL COMPLY WITH LATEST REVISION OF SAFWAY SERVICES, LLC QUIKDECK SUSPENDED ACCESS SYSTEM ASSEMBLY GUIDE PUBLICATION #ORN 1803. SAFWAY SERVICES, LLC WILL NOT BE RESPONSIBLE FOR MONITORING OR CONTROLLING LIVE LOADS APPLIED TO THE QUIKDECK SUSPENDED ACCESS SYSTEM OR FOR REMOVAL OF EQUIPMENT, DEBRIS BUILDUP, ETC. AS NECESSARY TO ENSURE MAXIMUM ALLOWABLE LOADING IS NOT EXCEEDED.
- CONCENTRATED LOADS**
ALL CONCENTRATED LOADS APPLIED TO THE QUIKDECK SUSPENDED ACCESS SYSTEM SHALL BE PROPERLY DISTRIBUTED USING PLYWOOD DECKING PANELS OR SCAFFOLD PLANKS. ALL PLYWOOD PANELS UTILIZED FOR DUNNAGE MUST BE 3/4 INCH THICK BB OES STRUCTURAL GRADE 1 QUIKDECK DECKING PANELS. REFER TO SAFWAY SERVICES, LLC QUIKDECK SUSPENDED ACCESS ASSEMBLY GUIDE PUBLICATION #ORN 1803 FOR MORE INFORMATION.
- WELDING / ELECTRICAL WORK**
UNLESS OTHERWISE SPECIFIED, QUIKDECK SUSPENDED ACCESS SYSTEM SHALL BE PROPERLY GROUNDED AND SUSPENDERS PROPERLY INSULATED WHERE DANGER OF STRAY VOLTAGE MAY EXIST. GROUNDING OF QUIKDECK SUSPENDED ACCESS SYSTEM IS THE RESPONSIBILITY OF OTHERS.
- HOT WORK**
UNLESS OTHERWISE SPECIFIED, FIRE RETARDANT PLYWOOD DECKING PANELS SHALL BE UTILIZED AND SUSPENDERS AND SYSTEM COMPONENTS PROPERLY PROTECTED FROM EXCESSIVE HEAT WHERE HOT WORK SUCH AS FLAME CUTTING IS PERFORMED ON OR ABOVE THE QUIKDECK SUSPENDED ACCESS SYSTEM.
- WIND ENCLOSURE**
UNLESS OTHERWISE SPECIFIED, QUIKDECK SUSPENDED ACCESS SYSTEM HAS NOT BEEN DESIGNED FOR WIND ENCLOSURE. SAFWAY SERVICES, LLC WILL NOT BE RESPONSIBLE FOR COSTS, DELAYS, PROPERTY DAMAGE, PERSONAL INJURY OR DEATH CAUSED BY WIND ENCLOSURE OR RESULTING FROM LOADS APPLIED TO QUIKDECK SUSPENDED ACCESS SYSTEM OR STRUCTURAL MEMBERS BY WIND ENCLOSURE. CONTACT SAFWAY SERVICES, LLC ENGINEERING FOR APPROVAL PRIOR TO DESIGN OR ERECTION OF WIND ENCLOSURE.
- TOEBOARDS AND GUARDRAIL**
TOEBOARDS AND GUARDRAILS MUST BE SECURED ON ALL OPEN SIDES OF THE PLATFORM AS REQUIRED BY ALL APPLICABLE REGULATIONS.
- PLYWOOD DECKING PANELS**
UNLESS OTHERWISE SPECIFIED, ALL PLYWOOD DECKING UTILIZED FOR THE QUIKDECK SUSPENDED ACCESS SYSTEM SHALL BE APA 34 INCH THICK STRUCTURAL GRADE 1 BB OES PLYWOOD PANELS. ALL PLYWOOD DECKING PANELS SHALL BE PROPERLY SECURED PER LATEST REVISION OF QUIKDECK SUSPENDED ACCESS SYSTEM ASSEMBLY GUIDE SAFWAY SERVICES, LLC PUBLICATION #ORN 1803.
- SUPPORTED SCAFFOLDING ON QUIKDECK PLATFORM**
UNLESS OTHERWISE SPECIFIED:
 - LEG LOADS SHALL BE CAREFULLY CONTROLLED AND BASE PLATES PROPERLY DUNNAGED
 - SUPPORTED SCAFFOLD LIVE LOAD AND DEAD LOADS SHALL BE CONSIDERED LIVE LOADS APPLIED TO THE QUIKDECK PLATFORM
 - APPLICATION OF SUPPORTED SCAFFOLDING SHALL COMPLY WITH LATEST REVISION OF QUIKDECK SUSPENDED ACCESS SYSTEM ASSEMBLY GUIDE SAFWAY SERVICES, LLC PUBLICATION #ORN 1803.

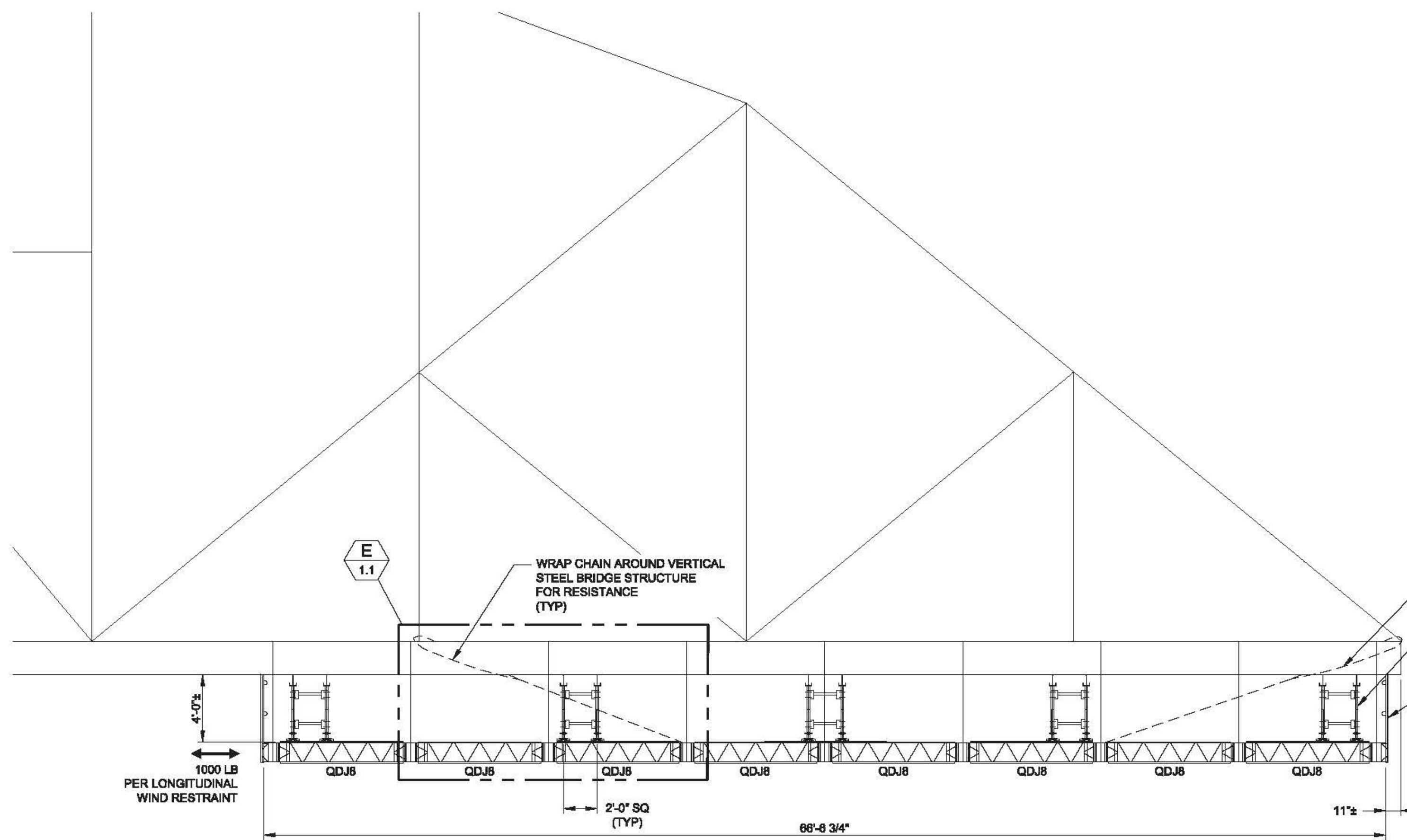


PLAN VIEW
SCALE: 3/16" = 1'-0"
(DO NOT SCALE)

- = SUSPENSION CONNECTION LOCATION AT PLATFORM NODE
- = SUSPENSION CONNECTION LOCATION AT BRIDGE BOTTOM CHORD



| | | | | | |
|------------------|--------------|---------------|-------------|-----------------|----------------|
| FOR CONSTRUCTION | FOR APPROVAL | FOR QUOTATION | PRELIMINARY | CONCEPT DRAWING | NOT FOR CONST. |
| X | | | | | |
| Author | Checker | Designer | Reviewer | Drawn | Scale |
| | | | | | |



ELEVATION
SCALE: 3/16" = 1'-0"
(DO NOT SCALE)

LOADING CRITERIA
THIS PLATFORM IS DESIGNED FOR A MAXIMUM LIVE LOAD RATING OF 25 POUNDS PER SQUARE FOOT UNIFORMLY DISTRIBUTED, PLUS DEAD LOAD AT 8 POUNDS PER SQUARE FOOT UNIFORMLY DISTRIBUTED.



| | | | |
|-----------------|---|------------|---------|
| State: | ALBANY (056) | Eng. Lic.: | SCOTIA |
| Project: | RICHMOND VERMONT BRIDGE QUIKDECK PLATFORM SYSTEM | | |
| Description: | ELEVATION AND PLAN VIEWS GENERAL NOTES AND LOADING CRITERIA | | |
| Contract: | | | |
| Drawn by: | RAF | Date: | 8/24/11 |
| Checked: | PAJ | Date: | 8/24/11 |
| Project Number: | 110670 | Dwg. No.: | 1.0 |
| Rev. Ltr.: | | | |