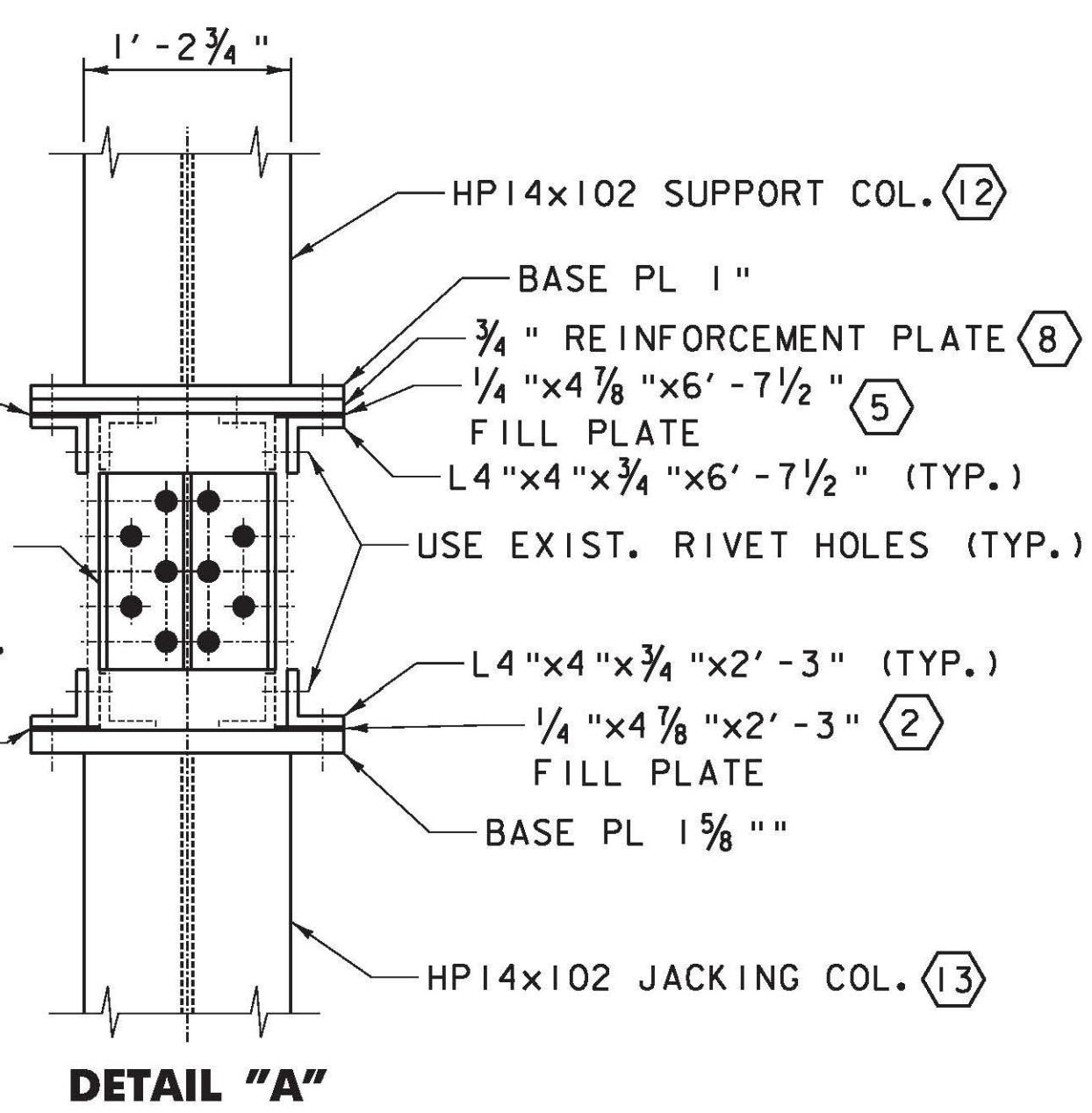
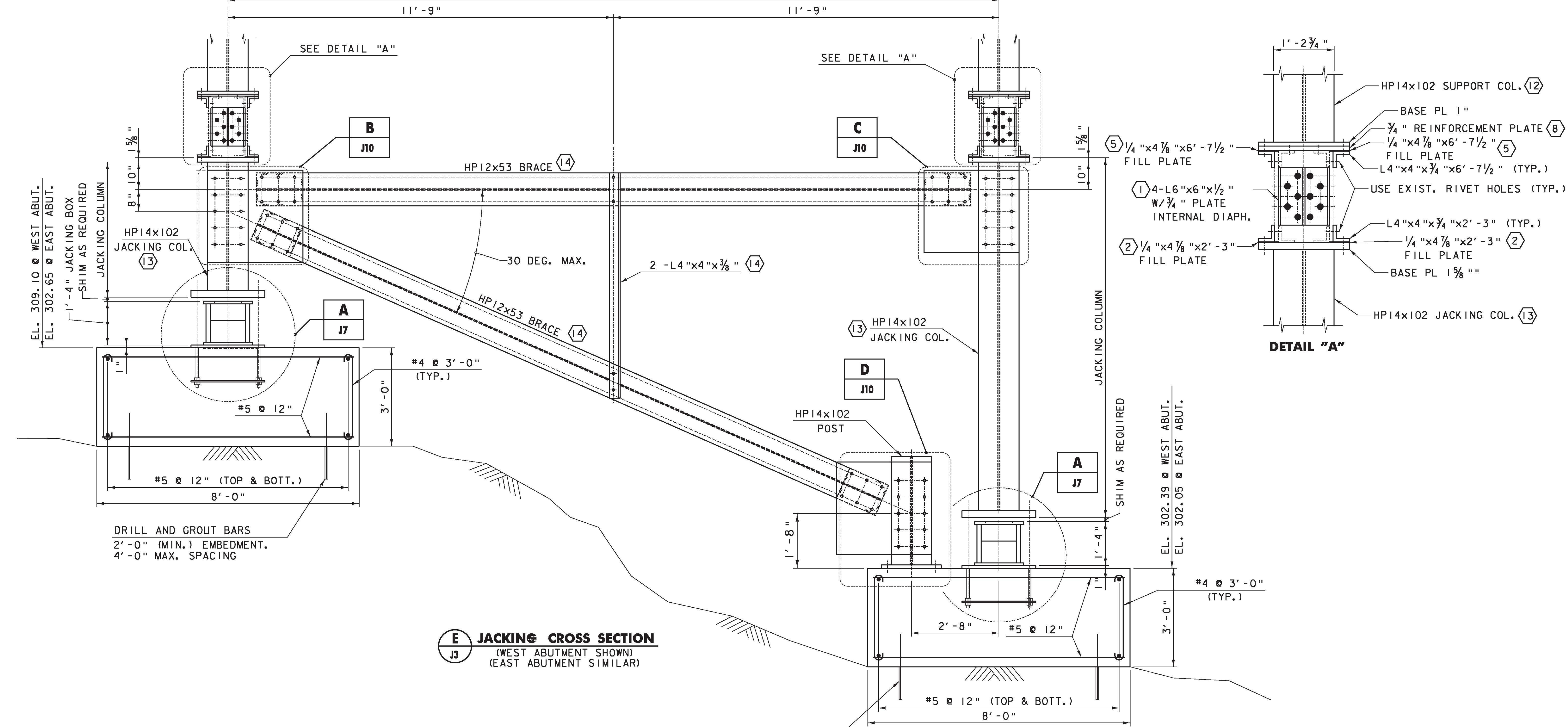


@ SOUTH JACKING COL. @ WEST ABUT.  
 @ NORTH JACKING COL. @ EAST ABUT.



**E JACKING CROSS SECTION**  
 (WEST ABUTMENT SHOWN)  
 (EAST ABUTMENT SIMILAR)

DRILL AND GROUT BARS  
 2'-0" (MIN.) EMBEDMENT.  
 4'-0" MAX. SPACING

DRILL AND GROUT BARS  
 2'-0" (MIN.) EMBEDMENT.  
 4'-0" MAX. SPACING

**NOTES:**

1. REINFORCEMENT COVER SHALL BE 3" (TYP.) (U.O.N.)
2. (#) = JACKING ASSEMBLY PROCEDURE (SEE DRAWING J3).
3. HP12x53 BRACES SHALL BE  $F_y = 50\text{ksi}$

<b>JACKING SUPPORT ASSEMBLY DETAILS</b>	PROJECT NAME: RICHMOND
	PROJECT NUMBER: STP-RS 0284(III)
	FILE NAME: z90c092 jacking dt10l.dgn
	PROJECT LEADER: DJV
DESIGNED BY: CTA/PP	PLOT DATE: 8/3/2011
DWG. NO.: J4	DRAWN BY: PKR
	CHECKED BY: VC/KM
	SHEET XX OF XX

FILE NAME = v:\projects\envy\2\22076\cadd\mstr\brdge work\wbs (2-2) jacking\290c092\_jacking-dtl.02.dgn  
 DATE/TIME = 8/3/2011  
 USER = J4