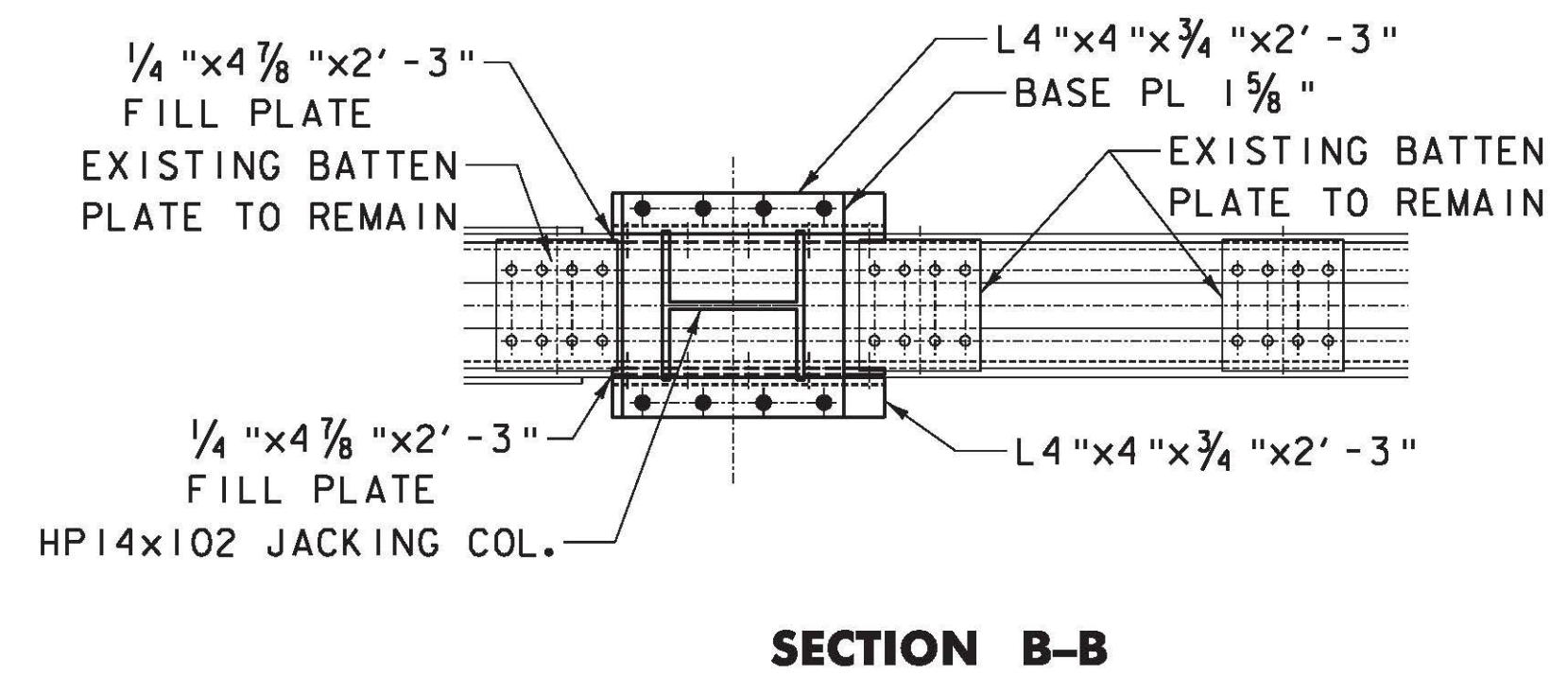
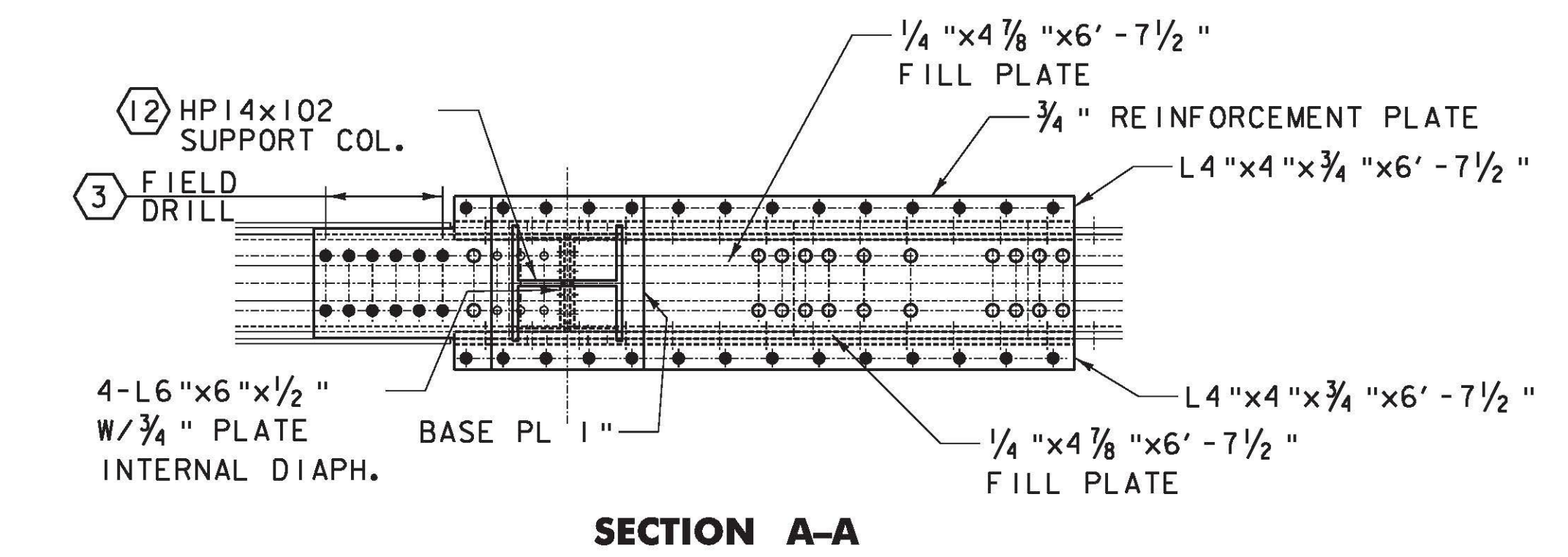
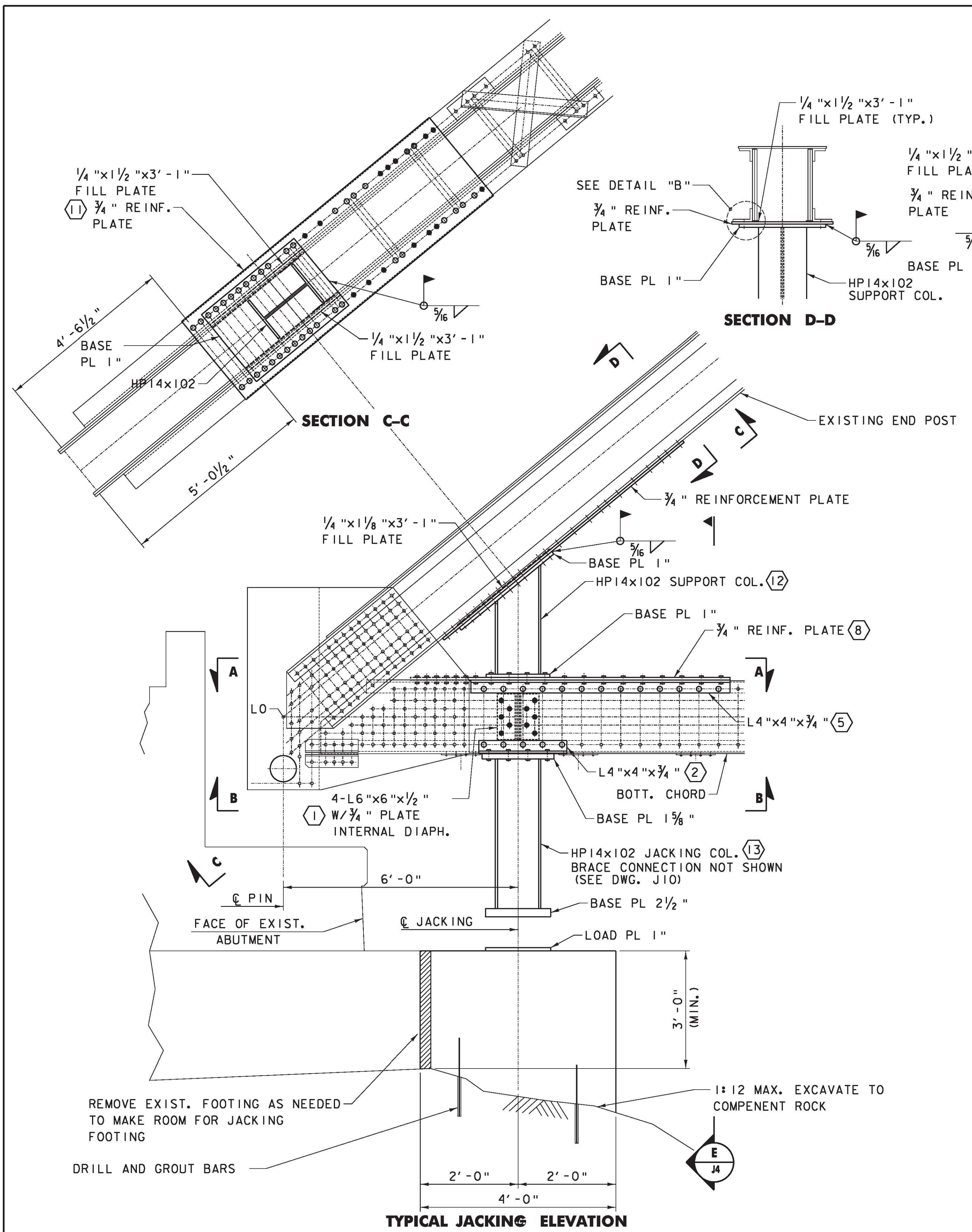


FILE NAME = v:\projects\2009\222076\cadd\mstr\bridge work\wbs (2-2) jacking\z90c092\_jacking.dtl.dgn  
 DATE/TIME = 8/3/2011  
 USER = JPK



JACK SUPPORT ASSEMBLY PROCEDURE	
1	- INSTALL INTERNAL DIAPHRAGM.
2	- INSTALL SUPPORT ANGLE AND FILL PLATE.
3	- FIELD DRILL NEW HOLES.
4	- REMOVE EXISTING RIVETS (NEAR SIDE CONNECTION)
5	- INSTALL L4 "x4 "x3/4 " AND 1/4 " FILL PLATE.
6	- REPEAT STEPS 4 AND 5 (FAR SIDE)
7	- REMOVE AND STORE BATTEN PLATES.
8	- INSTALL 3/4 " REINFORCEMENT PLATE.
9	- REMOVE AND STORE BATTEN PLATES AND LACING.
10	- FIELD DRILL NEW HOLES.
11	- INSTALL 3/4 " REINFORCEMENT PLATE W/1/4 " FILL PLATE.
12	- INSTALL HP14x102 SUPPORT COLUMN.
13	- INSTALL HP14 JACKING COLUMN.
14	- INSTALL JACKING BRACE ASSEMBLY
15	- INSTALL TENSION ROD AND SUPPORT ASSEMBLY

- NOTES:**
- ALL STEEL TO BE ASTM A709 GR. 36 ksi OR EQUAL, UNLESS OTHERWISE NOTED.
  - NO PAINT REQUIRED.
  - BOLT SHALL BE A325 W/A563 HEAVY HEX NUTS AND F436 STD. WASHERS. (THREADS EXCLUDED FROM SHEAR PLANE.)
  - ANCHOR BOLTS SHALL BE A325 (OR A449).
  - ALL CAST IN PLACE CONCRETE SHALL HAVE A 28 DAY COMPRESSIVE STRENGTH OF 5000psi.
  - ANY OF THE STEEL SECTIONS SPECIFIED IN THE DETAILS SHOWN MAY BE SUBSTITUTED FOR ANY SECTION OF EQUIVALENT SIZE. NOTIFY ENGINEER IF ANY ALTERNATE SECTION IS USED.
  - (\*) = JACKING SUPPORT ASSEMBLY PROCEDURE (SEE THIS SHEET).

JACKING SUPPORT ASSEMBLY DETAILS	PROJECT NAME:	RICHMOND	
	PROJECT NUMBER:	STP-RS 0284(III)	
FILE NAME:	z90c092 jacking dt101.dgn	PLOT DATE:	8/3/2011
PROJECT LEADER:	DJV	DRAWN BY:	PKR
DESIGNED BY:	CTA/PP	CHECKED BY:	VC/KM
DWG. NO.:	J3	SHEET	XX OF XX